

WIRING DIAGRAM 56310

GEN UNASSEMBLED 56311

COMPLETE UNIT 56309

REPAIR
PARTS LIST
#801

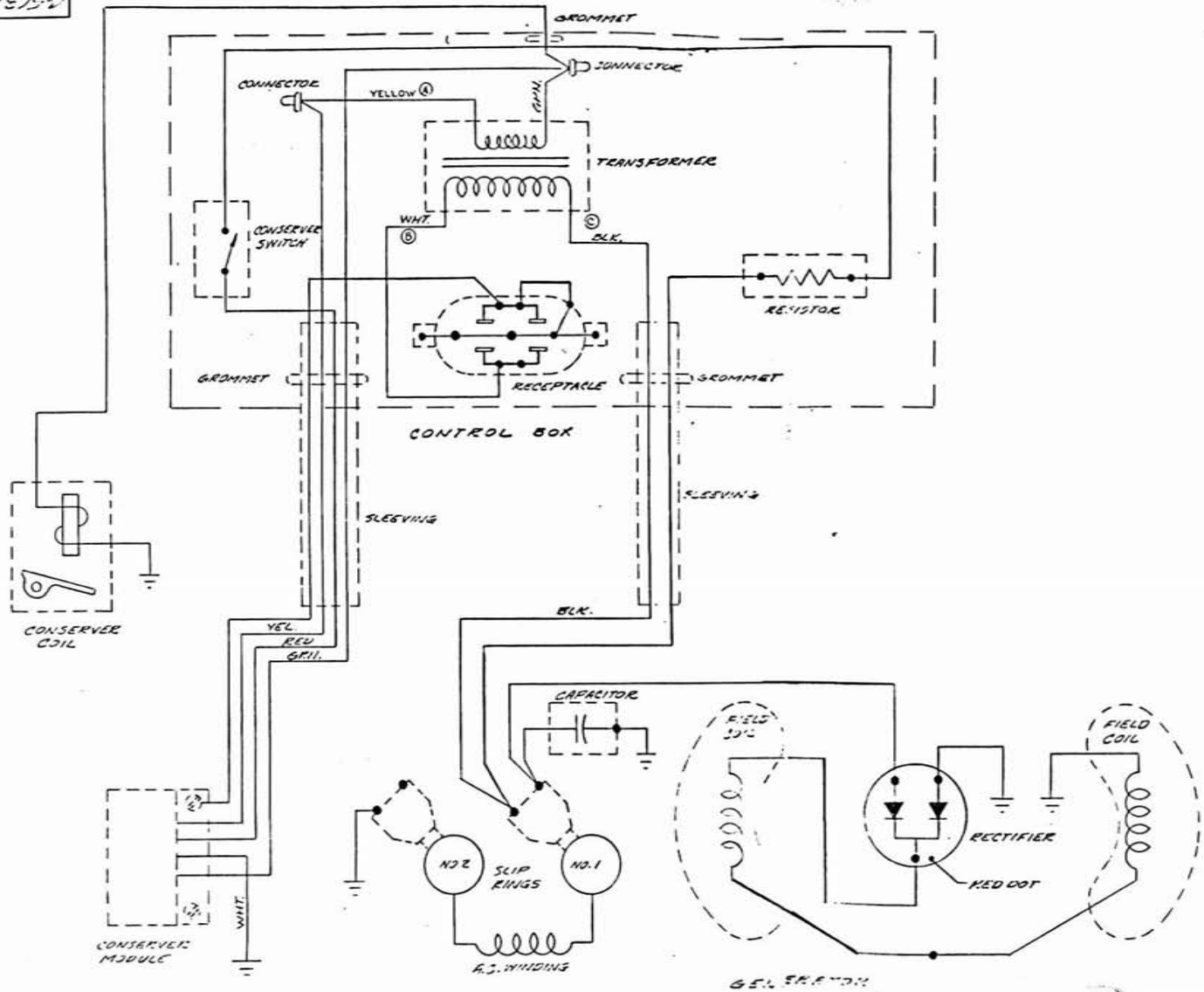
SIZE 2500 WATTS
DRIVE DIRECT
TYPE TWO POLE
MODEL 205BH-1M/B

REF#	DESCRIPTION	PART#	QTY
201	CONTOL BOX COVER	56335	1
213	SHOULDER WASHER	1376	2
241	ELECTROMAGNET	44889	1
243	RESISTOR	52641	1
244	TRANSFORMER	54196	1
245	CONSERVER SWITCH	24238	1
248	RECEPT. 15A-125V	24749	1
251	CONSERVER MODULE	48574	1
401	FAN	54967	1
402	THUR BOLT	23197-3	1
411	END BRACKET	43887	1
431	ARMATURE	55273-1	1
432	BEARING	55223	1
441A	FIELD COIL	53615	1
441B	FIELD COIL	53615-1	1
442	POLE SHOE	53612	2
443	POLE SHOE RETAINER	53613	2
444	FIELD SHELL	53614	1
445	STUD 1/4X20	23817	3
447	AC BRUSH	23607	4
460	BRUSH RACK ASSY	55092	1
461	MODULE MTG PLATE	56315	1
461	BRUSH HOLDER	59690	4
465	RECTIFER & PLATE	55495 (91452)	1
466	CAPACITOR	54977	1
491	END COVER	56312	1
601	CRADLE		
	WRAP AROUND	59563	1
	OPEN TOP	54770	1
604	SHOCK MOUNT	20191	3



225 South Cordova Avenue
Le Center, MN 56057 • (612) 357-6821

15752



GENERATOR

DRAWN BY		DATE	CHK'D BY	DATE	APP'D BY	DATE	SCALE
JON		3-21-78	JRM	3-23-78	JRM	3-23-78	—
MATERIAL							
(A) WAS RED (R) WAS WHITE/YELLOW 16 80 MIL 7/8 (C) WAS RED/BLACK, TRANSFORMER REWIND DC 311/14							
FINISH	—						
APP	2-56310						
WORK	2-56310-100						
DYNA TECHNOLOGY, INC.							2-56310
SIoux CITY IOWA							1/16" = 1"

WIRING DIAGRAM

1/16" = 1"