

1800 RPM INDUSTRIAL:

Industrial designed, rugged, long life, portable power. The Winco 1800 RPM slow speed unit gives over double the life of a standard high speed alternator, with 50% less noise and lower fuel consumption. Winco's unique field shell construction, triple baked armature, over-sized rectifiers, double sealed permanent bearings, and built-in overload protection all combine to insure maximum performance and life from the 1800 RPM plant.

The engine is the Wisconsin heavy-duty industrial with cast iron block, roller bearings, heat-resisting valves and rotators. Each power plant is tested at the factory to insure its performance and reliability.

STANDARD EQUIPMENT:

Skid base, muffler, shock absorbers, 4 amp. battery charging circuit, and instruction book.

SELECTION GUIDE 60 HERTZ MODELS

MODEL	†WATTS	VOLTS	AMPERES	PHASE	WIRE	P.F.	RPM	TYPE STARTING	MOTOR STARTING ABILITY**
*1205WS-3EP	12,500	115/230	54.4	1	3	1.0	1800	12V Electric	6
*1205WS-3R	12,500	115/230	54.4	1	3	1.0	1800	12V Remote	6
*1205WS-4R	12,500	120/208	34.7	3	4	1.0	1800	12V Remote	6
*1205WS-17R	12,500	115/230	31.4	3	4	1.0	1800	12V Remote	6

50 HERTZ MODELS

10WS-53EP	10,000	115/230	43.5	1	3	1.0	1500	12V Electric	5
10WS-53R	10,000	115/230	43.5	1	3	1.0	1500	12V Remote	5
10WS-54R	10,000	120/208	27.7	3	4	1.0	1500	12V Remote	5
10WS-517R	10,000	115/230	25	3	4	1.0	1500	12V Remote	5

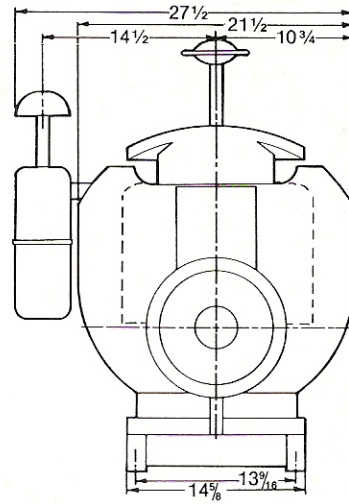
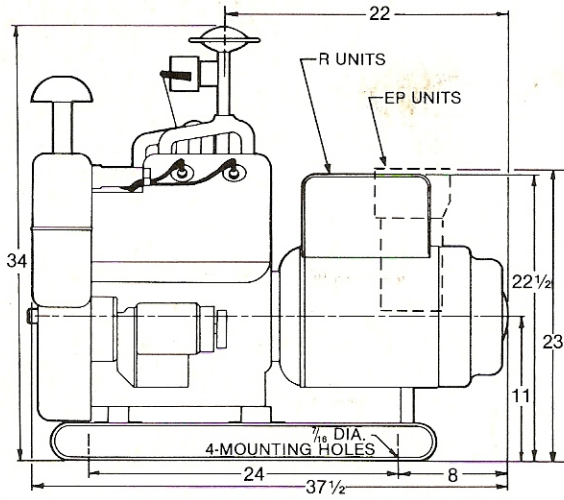
*CSA unit available upon request.

**Code G Capacitor start motor under full rated load.

†Rating will decrease 3½% for each 1,000 feet above sea level and 1% for each 10° F. above standard temperature at 60° F.



12.5 KW GAS/GASOLINE 1800 RPM INDUSTRIAL POWER PLANT



All specifications subject to change without notice.

Approx. Net Weight: 640 lbs.
Approx. Ship Weight: 693 lbs.
Approx. Ship Cube: 42 cu. ft.

1205WS SERIES

GASOLINE ENGINE

- MakeWisconsin
- ModelVH4D
- H.P. @ 1800 RPM 22.5
- Fuel Pump ... For Use with Tank Accessory
- Approx. Fuel Consumption
- Full Load (Gal.) per hour 2.32
- Displacement 107.7 cu. in. (1,764.9 cc)
- Type 4 Cycle—V Type 4 Cylinder
- Cylinder Cast Nickel Iron
- Bearings Tapered Roller
- Lubrication ... Pump Driven with Individual Stream to Each Rod.
- Oil Spray to All Other Parts
- Intake Valves Austenitic Steel
- Molybdenum Iron Seat Insert
- Exhaust Valves .Heat Resisting Alloy Steel
- Positive Type Rotators,
- Heat Resisting Alloy Steel Seat Insert
- Oil Capacity 4 Quarts
- Air Cleaner Oil Bath Type
- Governor . . . Built-in Centrifugal Flyball Type
- Spark Plugs Resistor Type
- Muffler Standard Screw-in Type
- Starting 12 Volt, Negative Ground
- Gear Engaging

CONTROL PANEL INCLUDES:

Electric Start

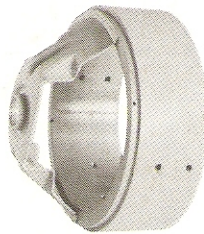
- One NEMA L5-20R 3-wire twistlock 20 amp. 115V receptacle
- One NEMA L6-20R 3-wire twistlock 20 amp. 230V receptacle
- One NEMA 5-15R Duplex "U" grd. 15 amp. 115V receptacle
- One NEMA L5-30R 3-wire twistlock 30 amp. 115V receptacle
- One NEMA L6-30R 3-wire twistlock 30 amp. 230V receptacle
- One NEMA 6-50R 3-wire 50 amp. 230V receptacle
- Starter Switch

Remote Start

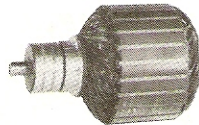
- Remote connections—load and start-stop
- Starter switch

WINGCO GENERATOR:

Type: 4 pole, revolving armature, direct drive, capacitors are included on both load circuits and exciter circuit to minimize interference on radio and television.



Field Frame: Approximately 13/16" thick CR steel. Bearing support bracket is welded to field frame to insure positive attachment. Bearing bore is precision machined by locating from rear rabbet fit to insure close bearing tolerance resulting in extended life for the generator and engine.



Each armature is triple dipped and baked to insure the best possible insulation and holding properties.

Exciter: Electronic excitation rectifier type no commutator or D.C. brushes—Increases reliability—reduces maintenance and provides ready service accessibility.

Voltage Regulation: ± 7% inherently regulated.

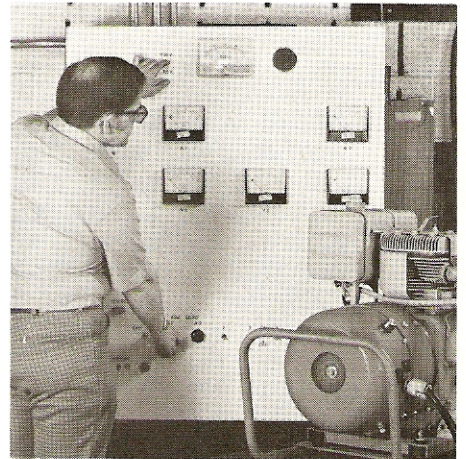
Temperature Rise: Temperature rise at rated load and power factor is within NEMA FMG1-22.40.

Bearing: Heavy-duty ball bearing, pre-lubricated and sealed for smooth, long life application.

Cooling: Direct drive blower draws cooling air through the generator and discharges the air at driven end.

Insulation: Class F as defined by NEMA MG1-1.65.

Standards: All generators meet IEEE and NEMA standards. CSA models also available.



Each Winco power plant is tested for a minimum of 20 minutes under rated load prior to painting and shipment. Winco power plants will meet or exceed nameplate rating.

OPTIONAL EQUIPMENT

LPG/Natural Gas carburetor, flexible exhaust, silenair muffler, battery, battery cables, fuel tanks, plus automatic transfer switches for remote units.

Warranty: One year limited warranty (including construction and rental usage).



Division of
DYNA TECHNOLOGY, INC.
7850 Metro Parkway
Minneapolis, MN 55420
Phone (612) 853-8400
Telex 290753