

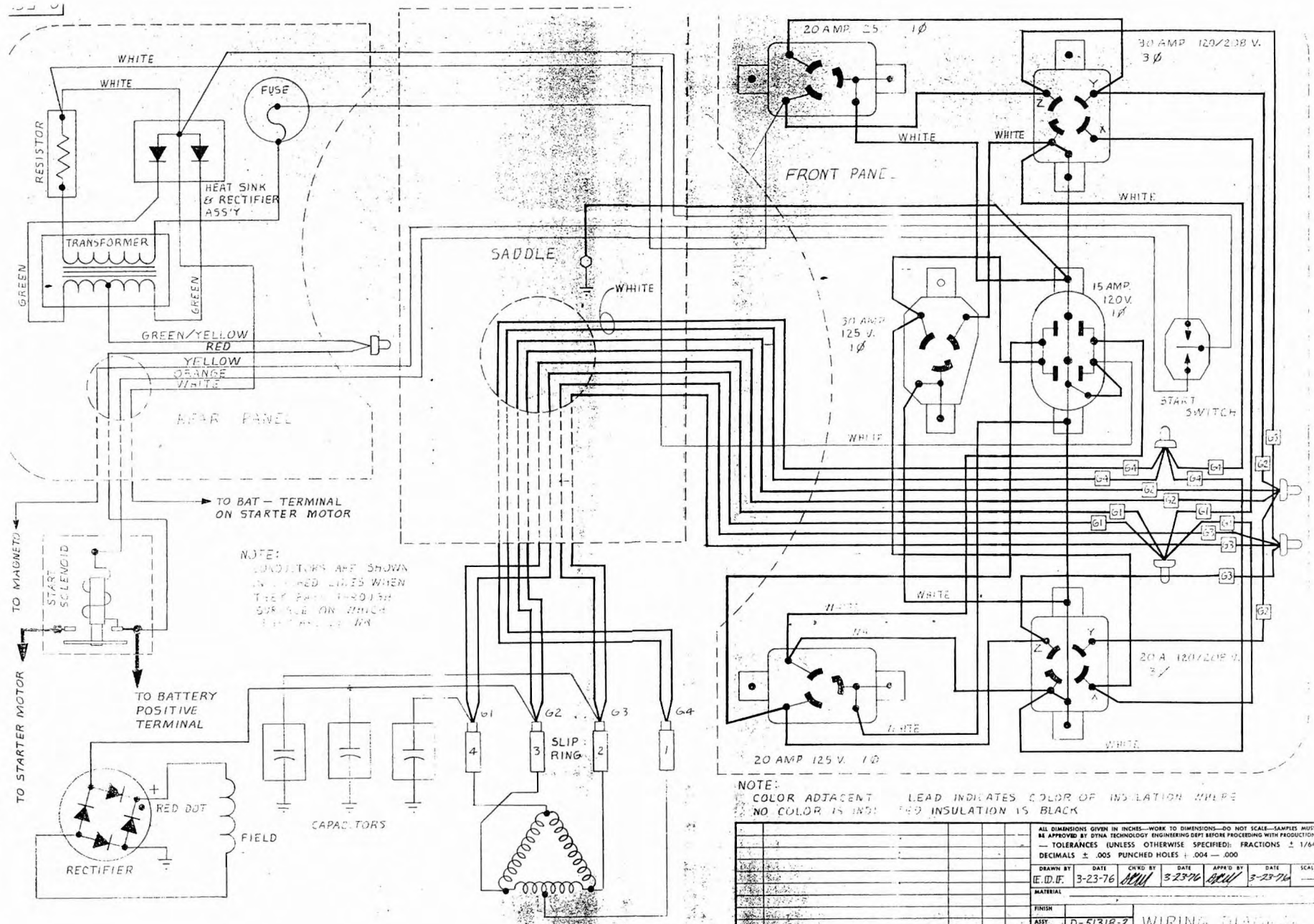
Wiring Diagram C58317
~~C58316~~
Schematic N/A
Generator Parts
Unassembled A58320
Complete Unit
Part # D58318-2

REPAIR
PARTS LIST
#571

Size 12,500 Watts
Drive Direct
Type Four Pole
Unit Model # 1205WS-17EP/D

<u>DESCRIPTION</u>	<u>PART #</u>	<u>QTY.</u>	<u>DESCRIPTION</u>	<u>PART #</u>	<u>QTY.</u>
Armature	55832-1	1	Control Box Assy.	57544-3	1
Armature Bearing	50215	1	Cover Assy.	51580	1
Armature Thru Bolt	44702	1	Front Panel (Bare)	57399	1
			Rear Panel (Bare)	57291	1
Fan Assy.	23404	1	Receptacle (115)(20A)	56279	1
Fan Washer	23558	1	Receptacle (250)(20A)	56281	1
Fan Lockwasher	40552	1	Receptacle (115)(20A)	50766	1
Fan Nut	23605	1	Receptacle (115)(30A)	56359	1
			Receptacle (250)(20A)	57472	1
Field Coil	54241	1	Receptacle (250)(30A)	57473	1
Field Coil	54241-1	1	Resistor (Charge)	41254	1
Field Coil	54241-2	1	Heat Sink & Diode Assy.	47731	1
Field Coil	54241-3	1	Switch	23772	1
			Fuse	43798	1
Shell & Bracket Assy.	53180	1	Fuse Holder	2489	1
Pole Shoe	49279	4	Start Solenoid	58314	1
Pole Shoe Retainer	49278	4			
Engine Adaptor Brkt.	49017	1	Transformer	43945	1
Adaptor Brkt. Screw	24707	4			
End Cover Assy.	23623	1			
Brush Rack Assy.	54243	1			
(Complete)	& -1	1			
A. C. Brush	24981	16			
A. C. Brush Holder	23500-2	16			
Brush Holder Plate	53975	6			
A. C. Condenser	41221	3			
Rectifier (Excitation)	53976	1			
Base	49000	1			
Shock Mounts	24745	4			

ENGINE MAKE Wisconsin MODEL # VH4D PART # 51274



NOTE: COLOR ADJACENT LEAD INDICATES COLOR OF INSULATION WHERE NO COLOR IS INDICATED INSULATION IS BLACK

DATE	DATE	DATE	DATE	SCALE
3-23-76	3-23-76	3-23-76	3-23-76	
DRAWN BY: [Signature]				
CHECKED BY: [Signature]				
APPROVED BY: [Signature]				
MATERIAL:				
FINISH:				
PART: D-51318-2 WIRING DIAGRAM				
MODE: 1205WS-17EFD				
ORIGINAL				

WINGO Division of DYNA TECHNOLOGY, INC. C-58317