

w/o Book

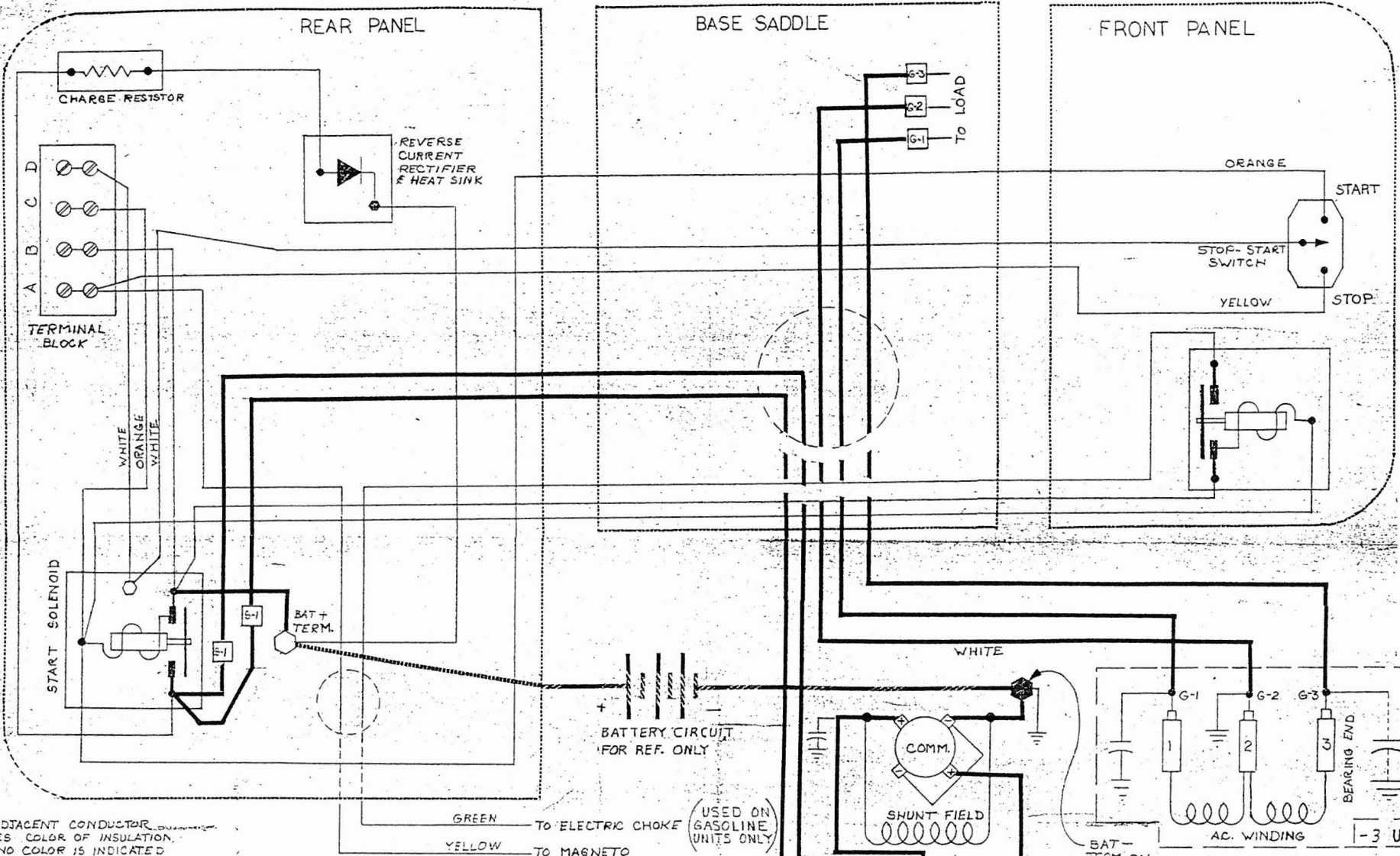
Wiring Diagram C54229
 Schematic N/A
 Generator Parts
 Unassembled C54283
 Complete Unit
 Part # C54236

 REPAIR
 PARTS LIST
 #534

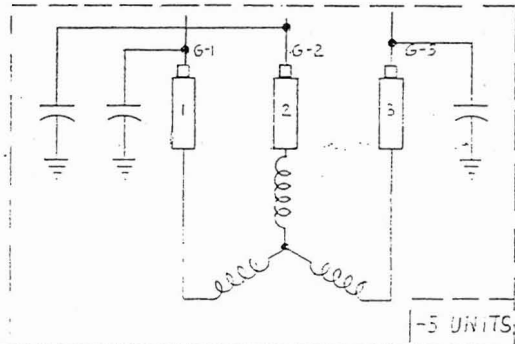
Size 10,000 Watts
 Drive Direct
 Type Four Pole
 Unit Model # 10WS-3R/A

<u>DESCRIPTION</u>	<u>PART #</u>	<u>QTY.</u>	<u>DESCRIPTION</u>	<u>PART #</u>	<u>QTY.</u>
Armature	54227-1	1	Control Box Assy.	54228	1
Armature Bearing	50215	1	Cover Assy.	49627	1
Armature Thru Bolt	24195	1	Front Panel (Bare)	53561-2	1
			Rear Panel (Bare)	52592	1
Fan Assy.	23404	1	Resistor (Charge)	24870	1
Fan Washer	23558	1	Reverse Current Diode	45930-2	1
Fan Lockwasher	40552	1	Start Stop Switch	23772	1
Fan Nut	23605	1	Start Solenoid	24061	2
			Terminal Block	22148	1
Field Coil	54282	1			
Field Coil	54282-1	1			
Field Coil	54282-2	1			
Field Coil	54282-3	1			
Shell & Bracket Assy.	50229	1			
Pole Shoe	51007	4			
Pole Shoe Retainer	51009	4			
Engine Adaptor Brkt.	49017	1			
Adaptor Brkt. Screw	24707	4			
End Cover Assy.	23634	1			
Brush Rack Assy. (Complete)	54235 & -1	1 1			
A. C. Brush	55536	12			
A. C. Brush Holder	23500	12			
D. C. Brush	47683	4			
D. C. Brush Holder & Plate Assy.	53918	2			
A. C. Condenser	41221	1			
D. C. Condenser	41180	1			
Frame	49000	1			

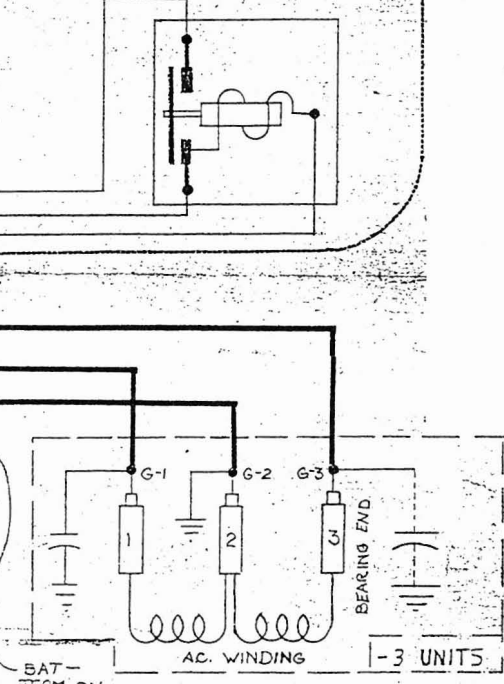
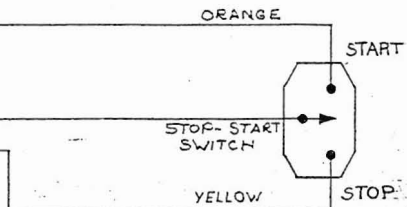
ENGINE MAKE Wisconsin MODEL # VF4D PART # 51275



NOTES:
 COLOR ADJACENT CONDUCTOR INDICATES COLOR OF INSULATION, WHERE NO COLOR IS INDICATED INSULATION IS BLACK.
 CONDUCTORS ARE SHOWN IN DASHED LINES WHEN THEY PASS THROUGH THE PANEL ON WHICH THEY ARE DRAWN
 FOR SCHEMATIC SEE DRAWING B-53536



-5 UNITS



RELEASE FOR PRODUCTION
 JAN 16 1979

3. START/STOP CALL OUT REVERSED		1-9-79	ASST	WIRING DIAGRAM	
2. ADDED CONFIGURATION FOR -5		1-15-68	ASST	MODEL 10WS-3R/A	
1. ORIGINAL			ASST	WINCHARGER CORP.	
DATE	BY	DATE	BY	DATE	SCALE
8-12-68	K.P.J.	8-28-68	ADD	9-12-68	
MATERIAL			FINISH		
SIoux CITY, IOWA			C-54229		