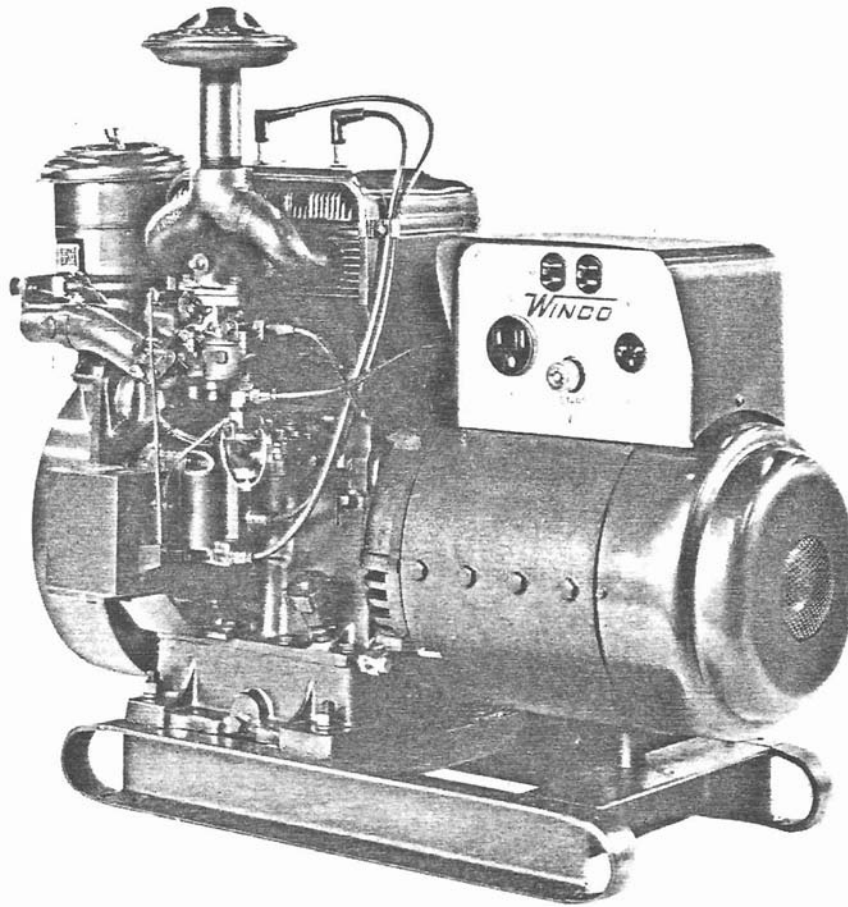


AIR COOLED

WINCO
GENERATORS

10KW GAS / GASOLINE

10WH-3E 3600 RPM HIGH PERFORMANCE



3600 RPM HIGH PERFORMANCE

Designed for heavy-duty applications including construction and rental yard usage. WINCO's conserver, maxi-watt, double dipped and baked armature, unique field shell construction, double sealed permanent bearing, built-in overload protection and the Wisconsin cast iron block engine are all standard features on this rugged series. The WINCO features are designed and built in as an integral part of the unit.

STANDARD FEATURES:

Conserver: Built-in idling control. Engine idles when power is not required, "revs" up to full engine speed

instantly when load is switched on. Extends engine life, increases reliability, saves up to 60% on fuel costs.

Maxi-Watt: An extra-heavy winding in the fields that provides extra power for heavier motor starting loads, reducing the size and weight of the generator required for starting motor loads.

STANDARD EQUIPMENT:

- Skid base
- Muffler
- Shock absorbers
- Instruction book

SELECTION GUIDE

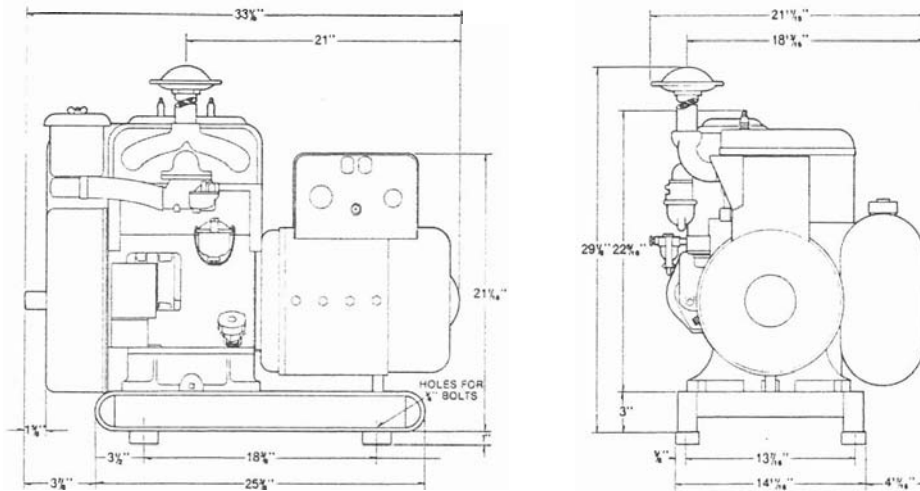
MODEL	†WATTS	VOLTS	AMPERES	HERTZ	PHASE	WIRE	P.F.	RPM	TYPE STARTING	MOTOR STARTING ABILITY**
10WH-3E	10,000	115/230	43.5	60	1	3	1.0	3600	12V Electric	4

**Code G capacitor start motor under full rated load.

†Ratings will decrease 3½% for each 1,000 ft. above sea level and 1% for each 10°F. above standard temperature of 60° F.

WINCO GENERATORS—Over 50 Years of Leadership

WINCO 10 KW GAS / GASOLINE HIGH PERFORMANCE GENERATOR



All specifications subject to change without notice.

Approx. Net Weight: 488 lbs.
Approx. Ship Weight: 528 lbs.
Approx. Ship Cube: 27.8

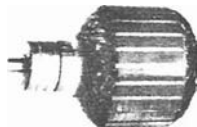
10WH-3E SERIES

GASOLINE ENGINE

Make Wisc.
Model TJD
H.P. @ 3600 RPM 18.2
Fuel Tank Capacity 3.5 Gallons
Approx. Fuel Consumption
Full Load (Gal.) Per Hour 1.96
Displacement 53.9 cu. in. (883.3 cc)
Type 4 Cycle, 2 Cylinder
Cylinder Cast Nickel Iron
Bearings Tapered Roller
Lubrication Pump Driven with
Individual Stream to Each Rod.
Oil Spray to all Other Parts.
Intake Valves Austenitic Steel
Molybdenum Iron Seat Insert
Exhaust Valves Heat Resisting Alloy
Steel—Positive Type Rotors—
Heat Resisting Alloy Steel
Seat Insert
Oil Capacity 3 1/2 Quarts
Air Cleaner Oil Bath Type
Governor ... Built-in Centrifugal Flyball Type
Spark Plug Resistor Type
Muffler Standard Screw-In Type



tolerance resulting in extended life.



Field Frame: approximately 15/16" thick HR steel. Bearing support bracket is welded to field frame to insure positive attachment. Bearing bore is precision machined by locating from rear rabbet fit to insure close bearing

Each armature is triple dipped and baked to insure the best possible insulation and holding properties.

Exciter: Electric start—commutator type—excitation and electric start feature is wound in the fields for faster cranking, battery charging and excitation.

Voltage Regulation: ± 7% no load to full load inherently regulated.

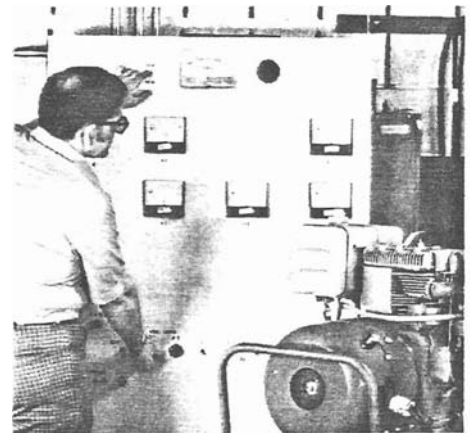
Temperature Rise: Temperature rise at rated load and power factor is within NEMA Class F MG1-22.40.

Bearing: Heavy-duty ball bearing, prelubricated and sealed for smooth, long life application.

Cooling: Direct drive blower draws cooling air through the generator and discharges the air at driven end.

Insulation: Class F as defined by NEMA MG1-1.65.

Standards: All generators meet IEEE and NEMA standards. CSA models also available.



Each Winco power plant is tested for a minimum of 20 minutes under rated load prior to painting and shipment. Winco power plants will meet or exceed name-plate rating.

OPTIONAL EQUIPMENT

LPG/Natural gas carburetion, flexible exhaust kit, silentair muffler, 2-wheel dolly, battery, battery cables. 46000

Warranty: One year limited warranty (including construction and rental usage).

CONTROL PANEL INCLUDES

- Two 5-15R "U" Ground 115V, 15 amp receptacles
- One 6-15R "U" Ground 230V, 15 amp 3 wire receptacle
- One 6-50R 230V, 50 amp 3 wire receptacle
- Starter switch
- Switch for automatic idling or continuous full speed

WINCO GENERATOR:

Type: 2 pole, revolving armature, direct drive, capacitors are included on both load circuits and exciter circuit to minimize interference on radio and television.

WINCO
Division of DYNA TECHNOLOGY, INC.

7850 Metro Parkway
Minneapolis, MN 55420-1985
Phone (612) 853-8400
Telex 290753
DYNA TECH MPS

Form No. 21-6-F84

Wiring Diagram C56393
 Schematic N/A
 Generator Parts
 Unassembled C55492
 Complete Unit
 Part # 56391

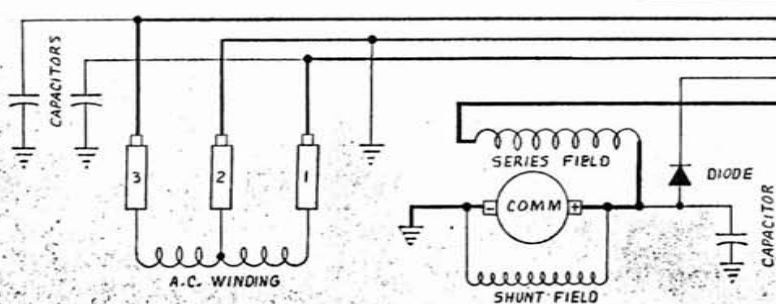
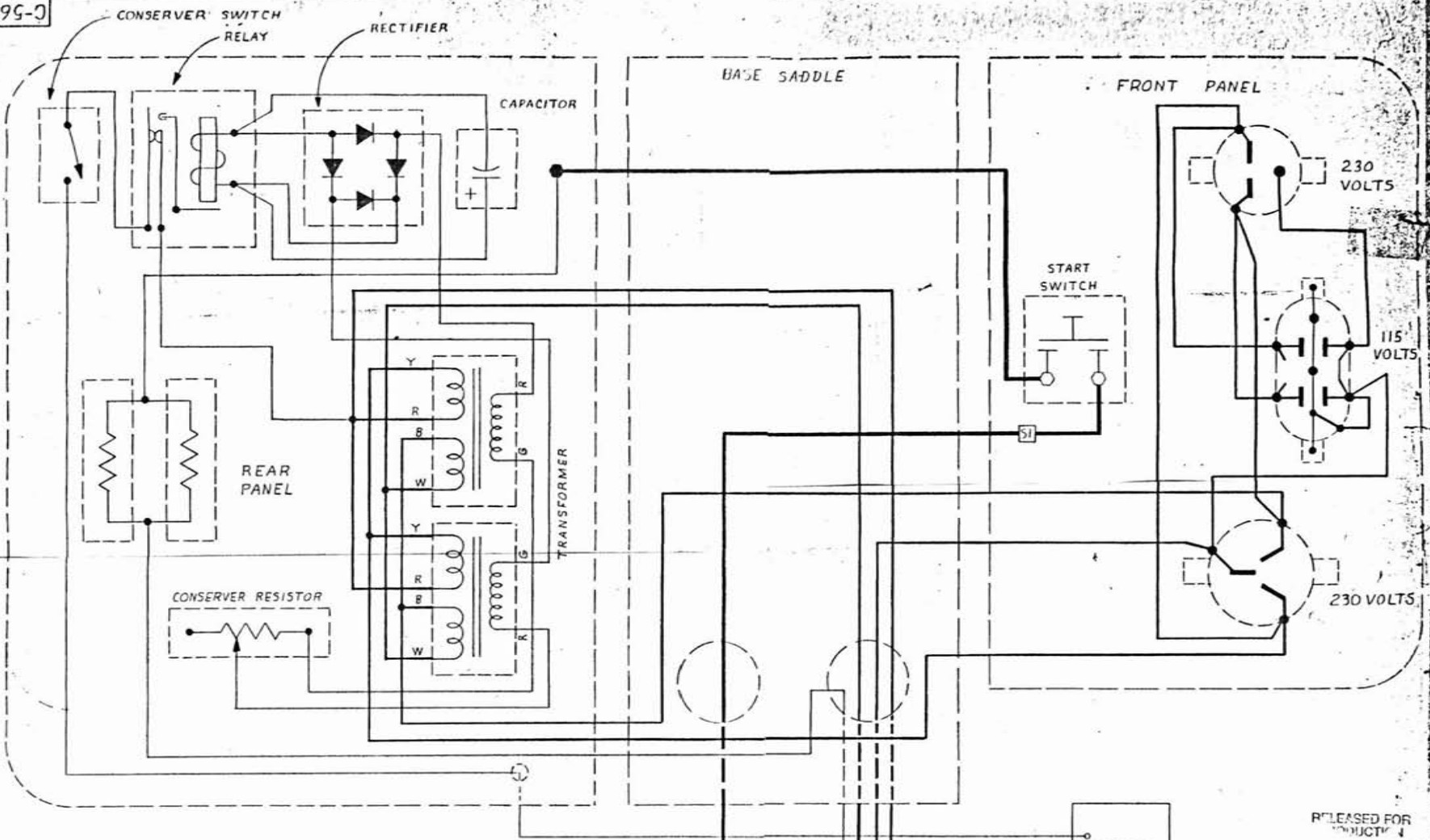
 REPAIR
 PARTS LIST
 #482

Size 10,000 Watts
 Drive Direct
 Type Two Pole
 Unit Model # 10WH-3E/A

<u>DESCRIPTION</u>	<u>PART #</u>	<u>QTY.</u>	<u>DESCRIPTION</u>	<u>PART #</u>	<u>QTY.</u>
Armature	55360-1	1	Control Box Assy.	56392	1
Armature Bearing	50215	1	Cover Assy.	49627	1
Armature Thru Bolt	24195	1	Front Panel (Bare)	54371	1
			Rear Panel (Bare)	54872-1	1
Fan Assy.	23404	1	Receptacle {115}	24749	1
Fan Washer	23558	1	Receptacle {230}	55278	1
Fan Lockwasher	40552	1	Receptacle (230)	57325	1
Fan Nut	23605	1	Resistor (Charge)	54599	2
			Relay	56396	1
Field Coil	55359	1	Diode Assy.	54023-1	1
Field Coil	55359-1	1	Stop Switch	52029	1
			Start Switch	2210	1
Shell & Bracket Assy.	55340	1			
Pole Shoe	43473	2	Conserver Assy.		
Pole Shoe Retainer	43474	2	(Complete)	42269	1
Engine Adaptor Brkt.	55493	1	Solenoid	42255	1
Adaptor Brkt. Screw	24707	4	Transformer	40450	2
End Cover Assy.	55007	1	Mounting Base	42251	1
			Arm (Throttle)	42249	1
Brush Rack Assy.	55650	1	Throttle Rod	42250	1
(Complete)	& -1	1	Resistor	22184	1
A. C. Brush	55536	12	Switch	24238	1
A. C. Brush Holder	23500	12	Cover	42243	1
D. C. Brush	47683	2			
D. C. Brush Holder	47684	1			
& Plate Assy.	& -1	1			
A. C. Condenser	41221	2			
D. C. Condenser	41180	1			
Frame	49987	1			

ENGINE MAKE Wisconsin MODEL # THD PART # 47525

E6E95-0



RELEASED FOR
PRODUCTIVITY
MAY 20 1985
EARTH ENERGY SYSTEMS, INC.
(P.O. BOX 1074, DALLAS, TEXAS 75201)

DRAWN BY		DATE	CHKD BY	DATE	APPR BY	DATE
E.D.F.		5-31-72	APW	6-14-72	APW	6-14-72
MATERIAL						
PARTS						
WIRING DIAGRAM						
DYNATECH, INC.						

ITEM	PART NO.	QUANT.	NAME	DATE	ISSUE

56393