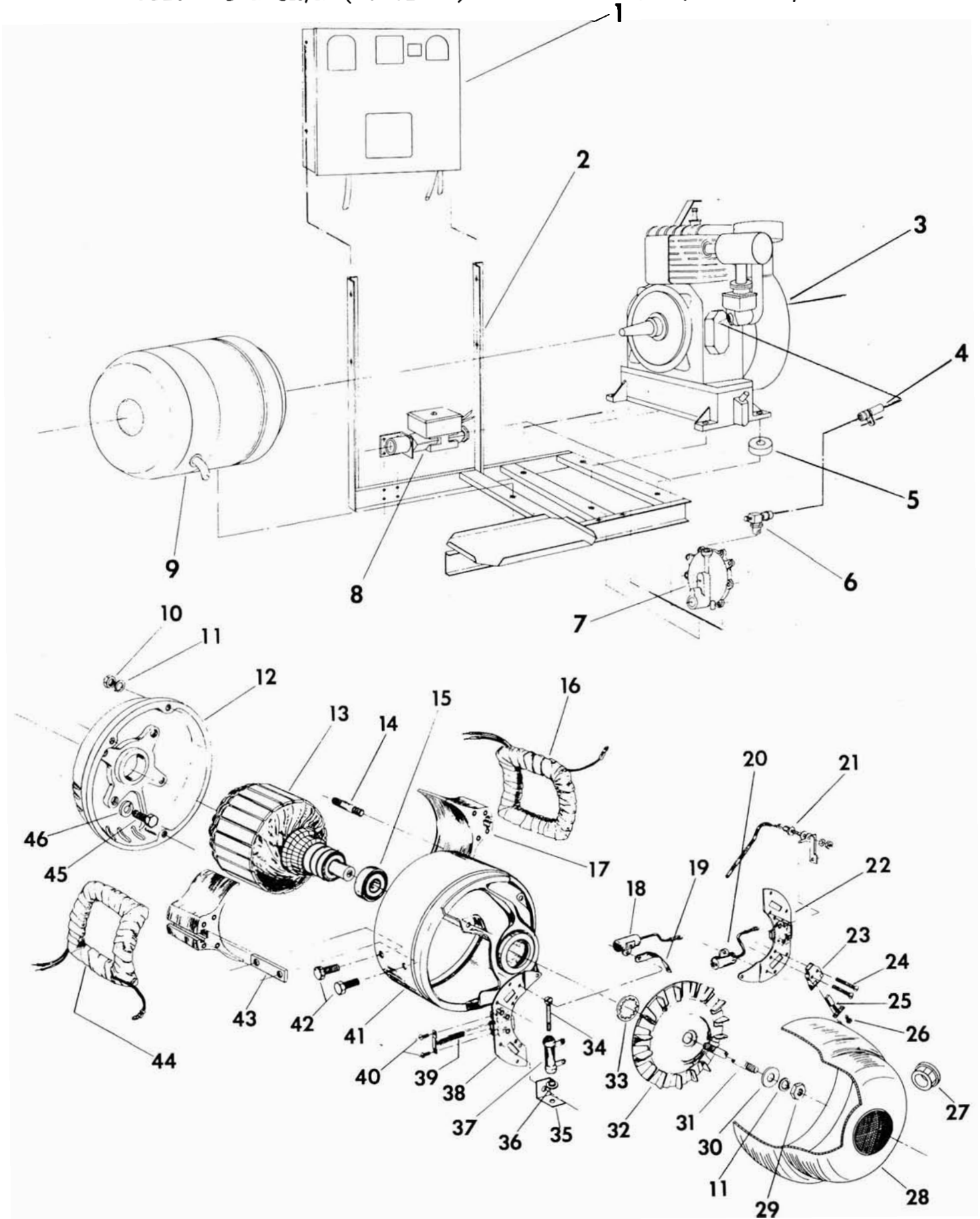
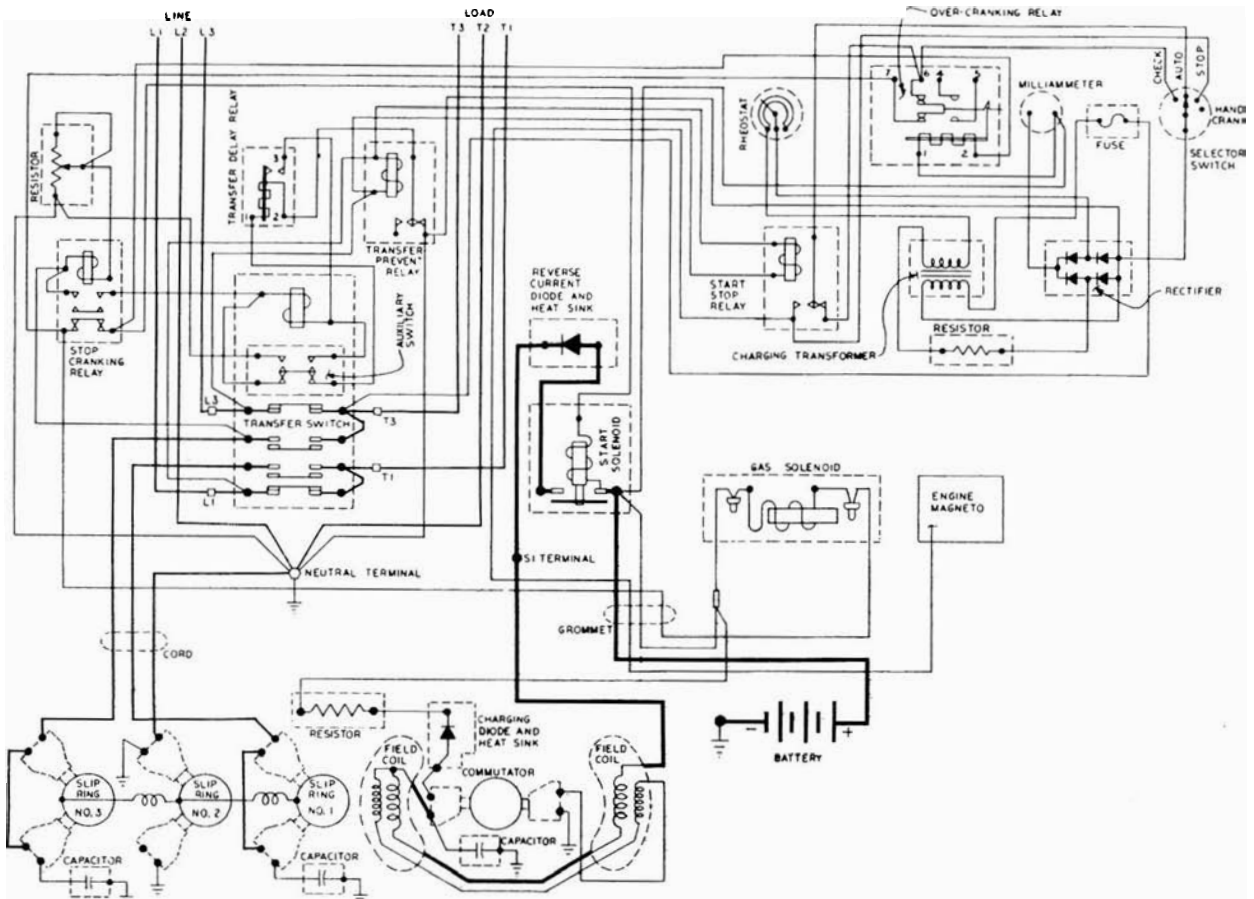


WINCO EMERGENCY POWER PLANT

Models PS5BH-3R/A (NG or LP) and PS7WH-3R/A (NG or LP)





PARTS LIST

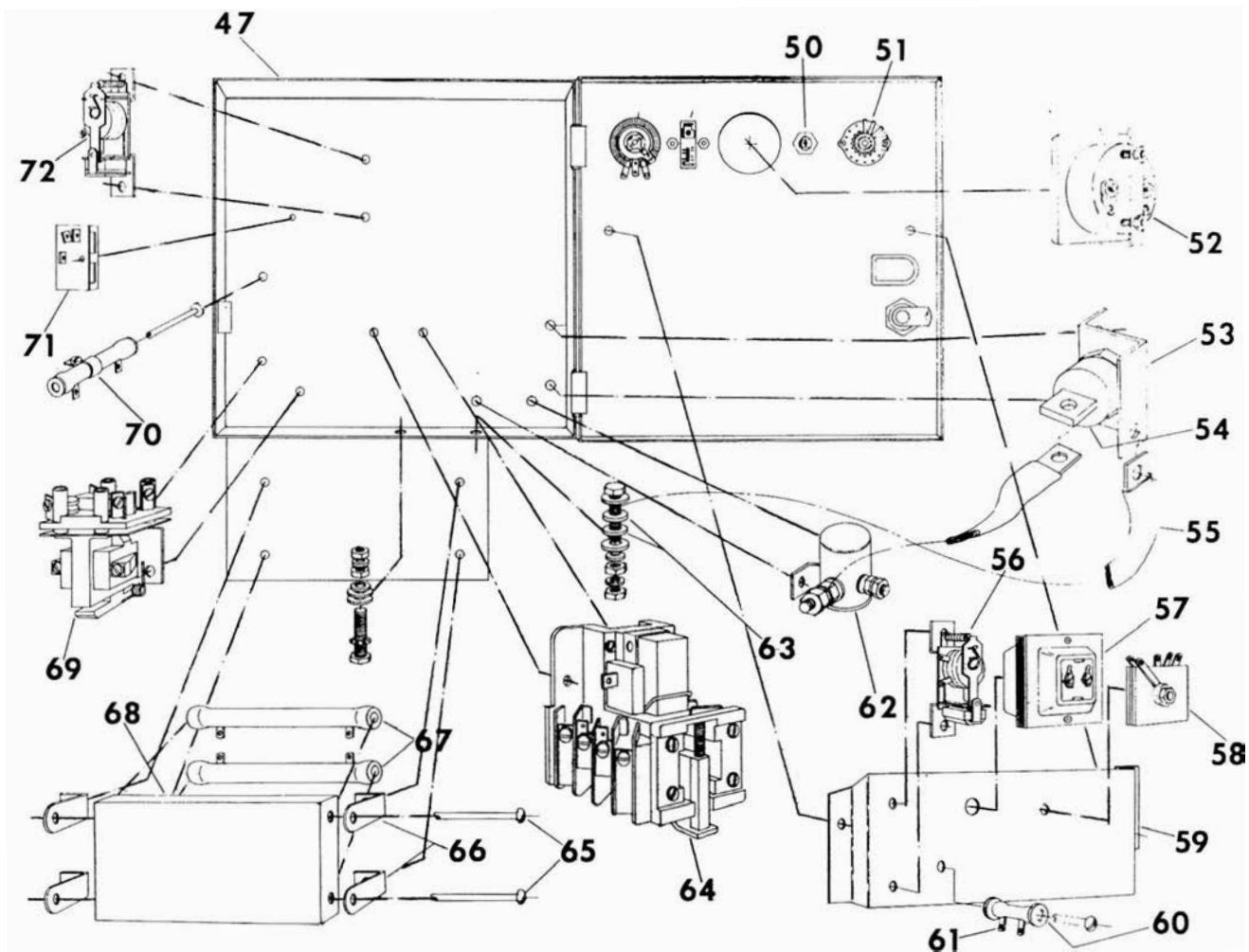
MODEL PS5BH-3R/A (NG or LP)

Ref. No.	Description	Qty.	Part No.	Ref. No.	Description	Qty.	Part No.
1	Elec. transfer control assy		55547	21	Diode	1	54023-1
2	Base frame assy	1	55466	21a	Heat sink	1	54733
3	Engine B&S 243431, type 0659.01	1	56270	22	Riveted brush rack assy	1	41744-1
4	NG fuel spud-in*		55561	23	Ac brush holders	6	23500
	LP fuel spud-in*		55552	24	Machine screw	4	40550
5	Rubber shock mount	5	20191-1	25	AC brush	6	23607
6	NG fuel load block*		55560	26	Machine screw	12	40746
	LP fuel load block*		55502	27	Strain relief	1	55437
	NG secondary regulator*		55559	28	End cover	1	55438-1
	LP secondary regulator*		55501-2	29	Hex nut	1	23605
8	Solenoid & bracket assy	1	55528	30	Flat washer	1	23558
8a	Solenoid only (not illustrated)		42942	31	Thru bolt	1	23197-7
9	Generator assy		55420	32	Fan assy	1	55101
10	Hex nut	4	458	33	Shakeproof lockwasher	1	55224
11	Split lockwasher	5	480	34	Machine screw	1	24864
12	End bracket	1	54025	35	Bracket	2	53997
13	Armature	1	55317-1	36	Fiber washer	2	1376
14	Stud	4	23451	37	Resistor	1	41984
15	Bearing	1	55223	38	Riveted brush rack assy	1	51744
16	Field coil	1	55422-1	39	DC brush	2	41393
17	Pole shoe	2	23207	40	Machine screw	3	4637
18	AC capacitor	2	41221	41	Field shell & brkt. assy	1	55417
19	Copper ground strap	2	41387-6	42	Hex hd cap screw	4	9416
20	DC capacitor	1	41180	43	Pole shoe retainer	2	23208
				44	Field coil	1	55422
				45	Hex hd cap screw	4	54028
				46	Split lockwasher	4	90570

* NG — Natural Gas

* LP — Liquefied Petroleum

Any parts required for gas engine portion of the unit should be obtained from the local engine manufacturer's service station.



PARTS LIST

The following parts are common to Models PS5BH-3R/A and PS7WH-3R/A except as noted *.

Ref. No.	Description	Qty.	Part No.	Ref. No.	Description	Qty.	Part No.
47	Surface cabinet	1	55426	59	Bracket	1	46117
48	Rheostat	1	24786	60	Insulation washer	2	266
48a	Dial Plate	1	8777	61	Resistor	1	24787
48b	Knob	2	8778	62	Start solenoid	1	24061
49	Over cranking relay	1	48585	63a	Shoulder washer	1	21981
50	Fuse holder	1	2489	63b	Insulation washer	1	6892
50a	Fuse, 3 AG, 1 amp	1	22219	64	Transfer relay	1	46125
51	Selector switch	1	57946	65	Machine screw†	2	54599-2
51a	Dial plate	1	21962	66	Bracket†	4	54599-1
52	Milliammeter	1	22188	67	Resistor†	2	54599
53	Heat sink	1	51061	68	Cover†	1	43987
54	Silicon rectifier	1	51060	69	Stop cranking relay	1	59944-015
55	Copper strap	2	52789-6	70	Resistor	1	23635
55a	Insulation sleeving	2	54041-6	71	Thermal delay relay	1	48525
56	Start/stop relay	1	40518	72	Transfer prevent relay	1	40518
57	Transformer	1	46755				
58	Selenium rectifier	1	22191				

* Items used on Model PS7WH-3R/A only

Any parts required for gas engine portion of the unit should be obtained from the local engine manufacturer's service station.

PARTS LIST MODEL PS7WH-3R/A (NG or LP)

Ref. No.	Description	Qty.	Part No.	Ref. No.	Description	Qty.	Part No.
1	Elec. transfer control assy		55594	21a	Heat sink _____	1	54729
2	Base frame assy _____	1	55544	22	Riveted brush rack assy	1	47684-1
3	Engine, Wisconsin S14D	1	56303	23	AC brush holder _____	9	23500
4	Fuel load block/ spud-in** _____	1	55593	24	Machine screw _____	6	23867
5	Rubber shock mount _____	6	20191	25	AC brush _____	9	55536
7	Secondary fuel regulator	1	55559	26	Machine screw _____	18	40746
8	Solenoid & Bracket assy	1	55528	27	Strain relief _____	1	55437
8a	Fuel solenoid only (not illustrated) _____		42942	28	End cover _____	1	55438-3
9	Generator assy _____		55014	29	Hex nut _____	1	23605
10	Hex nut _____	4	458	30	Flat washer _____	1	23558
11	Split lockwasher _____	5	480	31	Thru bolt _____	1	24185
12	End bracket _____	1	24957	32	Fan assy _____	1	23404
13	Armature _____	1	54993-1	33	Shakeproof lockwasher	1	40552
14	Stud _____	1	23451	38	Riveted brush rack assy	1	47684
15	Bearing _____	1	50215	39	DC brush _____	2	47683
16	Field Coil _____	1	54994-1	40	Machine screw _____	4	4637
17	Pole shoe _____	2	42882	41	Field shell & bracket assy	1	55008
18	AC capacitor _____	2	41221	42	Hex head cap screw _____	6	399
19	Copper ground strap _____	2	41387-1	43	Pole shoe retainer _____	2	51697
20	DC capacitor _____	1	41180	44	Field coil _____	1	54994
21	Diode _____	1	54023-1	45	Key _____	1	51822
				46	Socket head bolt _____	4	23604

** Carburetor adjustment for LP and NG

Any parts required for gas engine portion of the unit should be obtained from the local engine manufacturer's service station.

Manufactured by

WINCO

Division of Dyna Technology, Inc.

