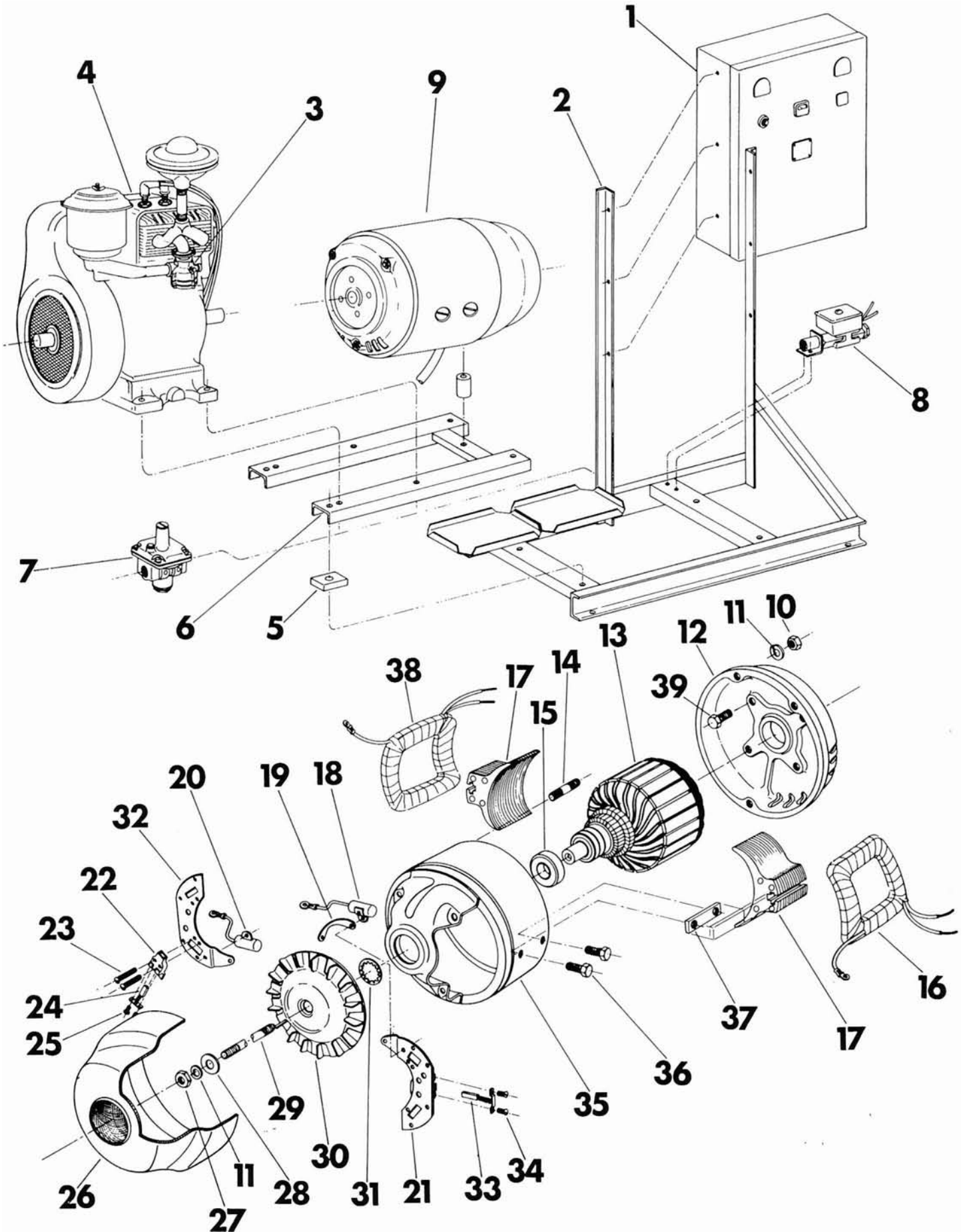
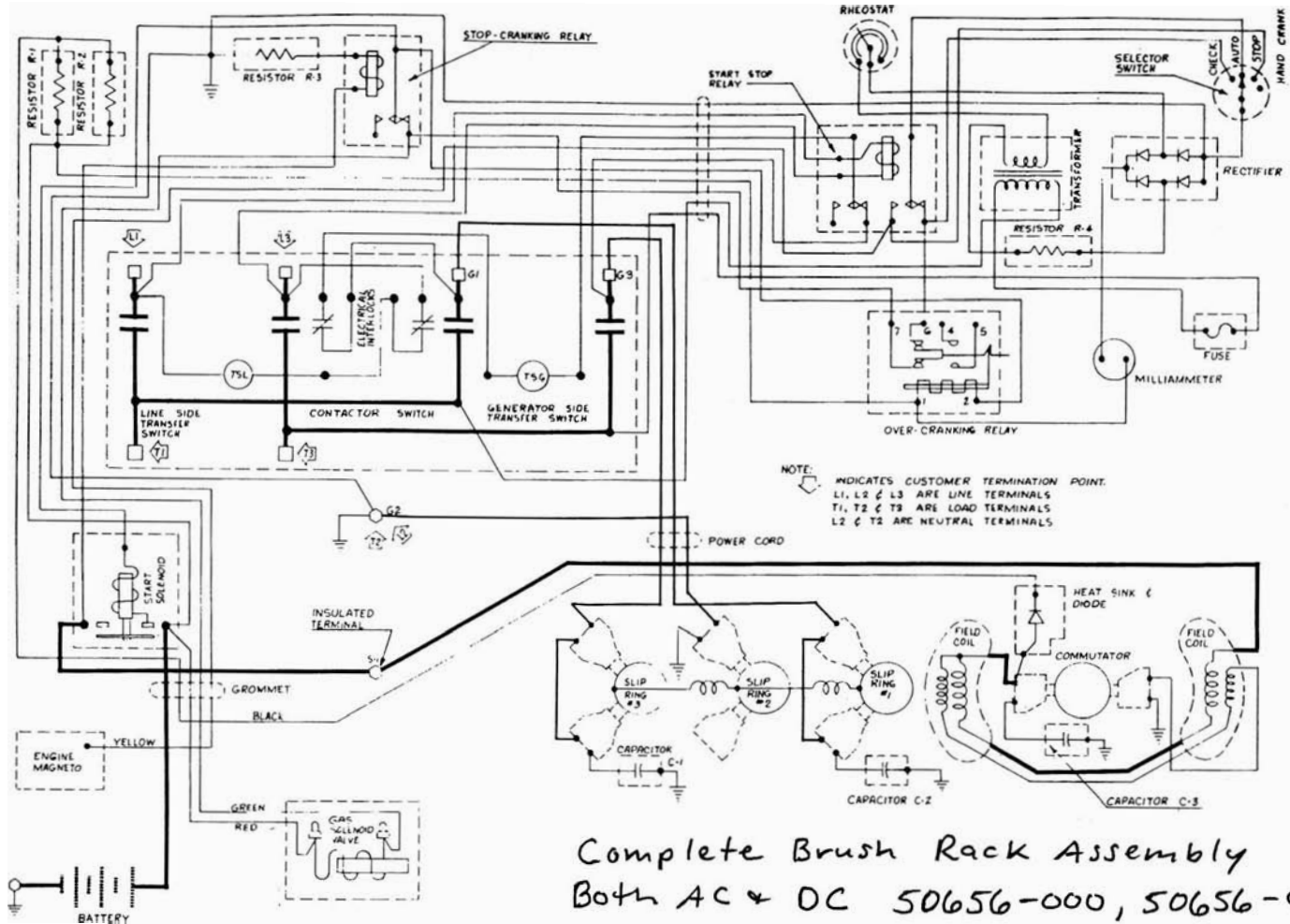


WINCO EMERGENCY POWER PLANT MODEL PS10WH-3R/B (NG or LP)





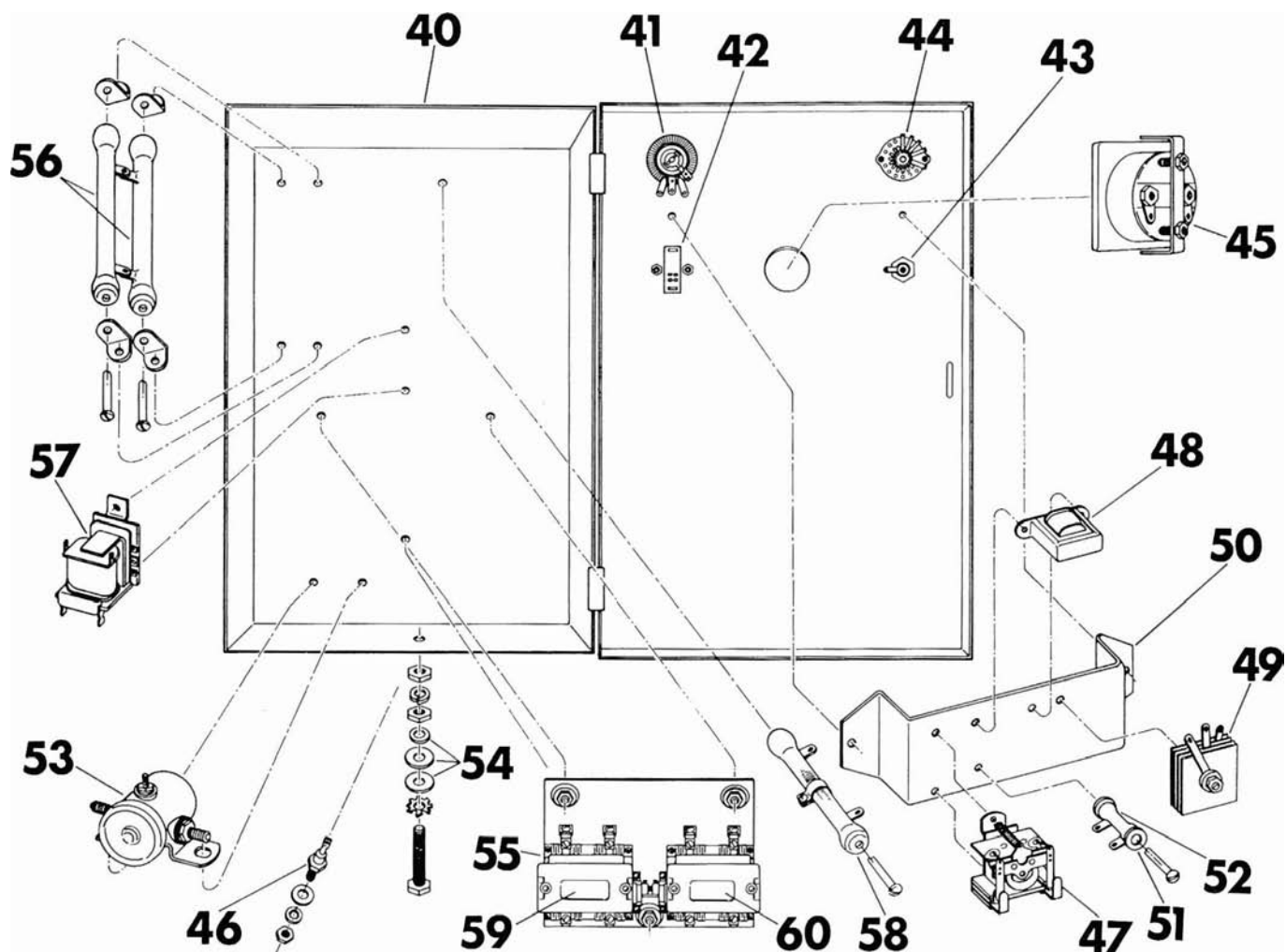
PARTS LIST

MODEL PS10WH-3R/B (NG or LP)

Ref. No.	Description	Qty.	Part No.	Ref. No.	Description	Qty.	Part No.
1	Elec. transfer control assy	1	55714	20	DC capacitor	1	41180
2	Base frame assy	1	55581	21	Riveted brush rack assy	1	47684-1
3	Carburetor	1	50852	22	AC brush holders	12	23500
4	Engine Wis. THD 361979	1	56302	23	Machine screw	8	23867
5	Rubber slab	4	24725	24	AC brush	12	55536
6	Sub base	1	55579	25	Machine screw	24	40746
7	Secondary regulator	1	50248	26	End cover	1	55007
8	Solenoid & bracket assy	1	55528	27	Hex Nut	1	23605
8a	Solenoid only (not illustrated)	1	42942	28	Flat Washer	1	23558
9	Generator assy	1	55492	29	Thru bolt	1	24195
10	Hex nut	4	458	30	Fan assy	1	23404
11	Split lockwasher	5	480	31	Shakeproof lockwasher	1	40552
12	End Bracket	1	55493	32	Riveted brush rack assy	1	47684
13	Armature	1	55360	33	DC brush	2	47683
14	Stud	4	51434	34	Machine Screw	3	4637
15	Bearing	1	50215	35	Field shell & brkt. assy	1	55340
16	Field Coil	1	55359-1	36	Hex hd cap screw	8	43781
17	Pole shoe	2	43473	37	Pole shoe retainer	2	43474
18	AC capacitor	2	41221	38	Field coil	1	55359
19	Copper ground strap	4	41387	39	Hex hd cap screw	4	24707

400
401

Any parts required for gas engine portion of the unit should be obtained from the local engine manufacturer's service station.



PARTS LIST

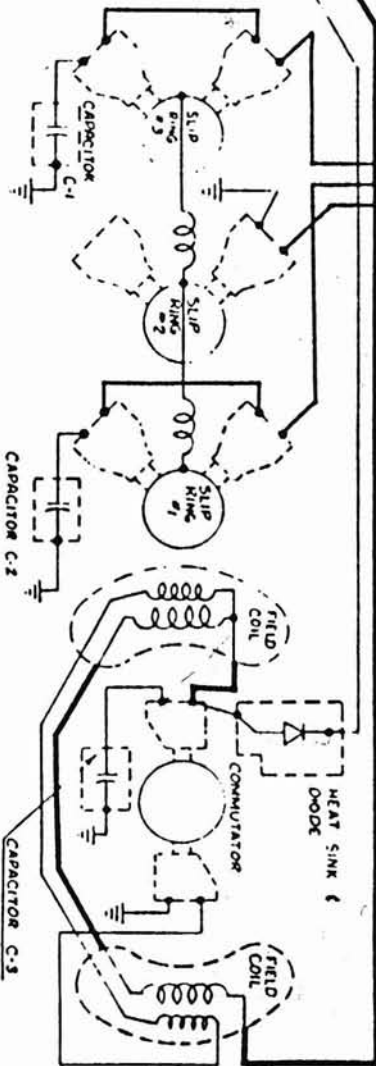
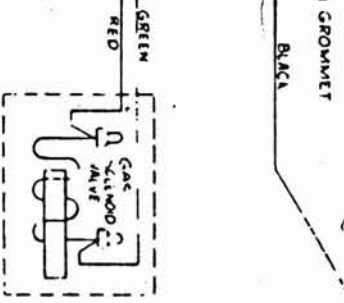
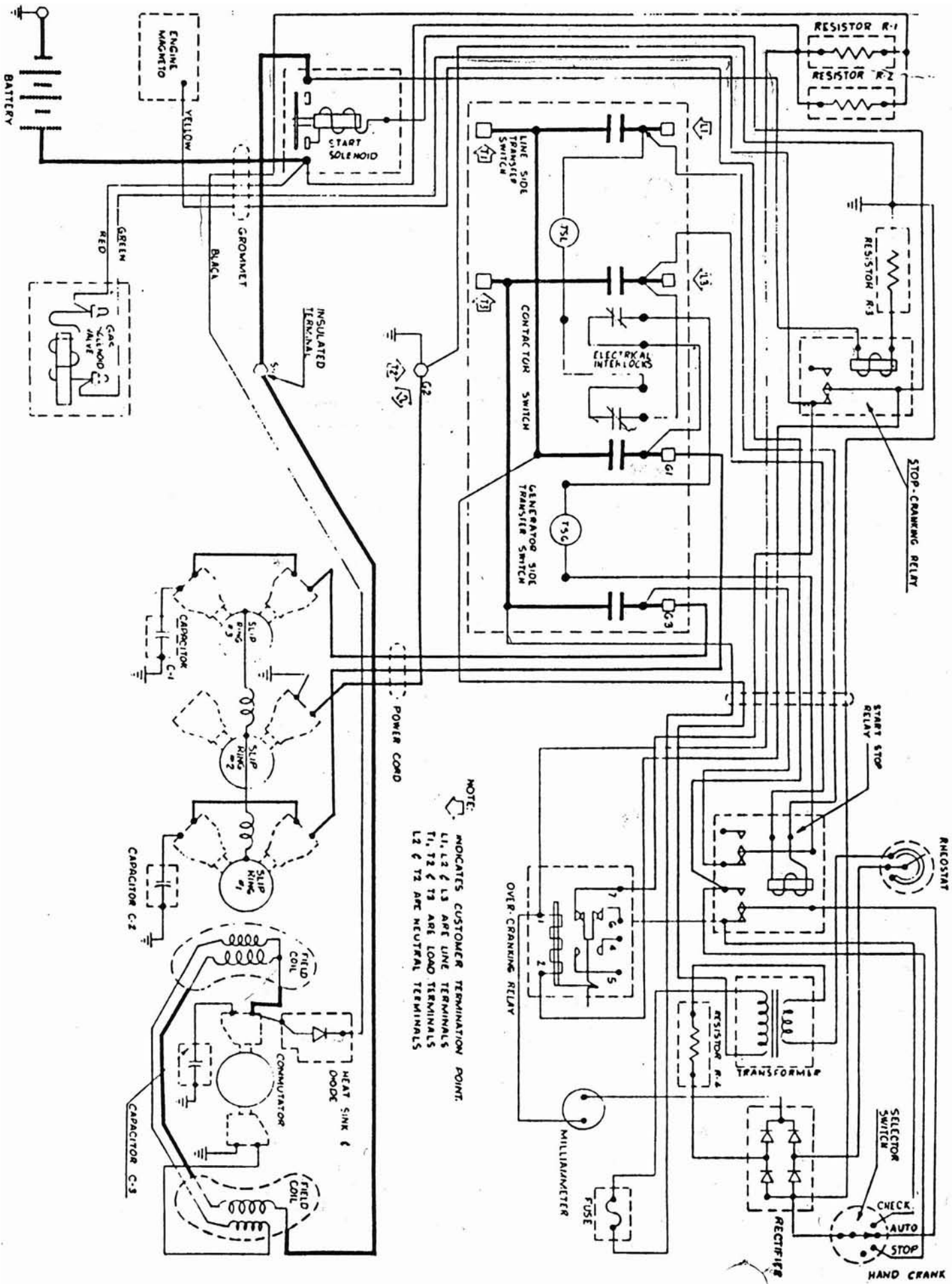
MODEL PS10WH-3R/B (NG or LP)

Ref. No.	Description	Qty.	Part No.	Ref. No.	Description	Qty.	Part No.
40	Surface cabinet	1	55597	49	Selenium rectifier	1	22191
41	Rheostat	1	24786	50	Bracket	1	22243
41a	Dial Plate	1	8777	51	Insulation washer	2	266
41b	Knob	2	8778	52	Resistor	1	24787
42	Over cranking relay	1	48585	53	Start solenoid	1	24061
43	Fuse holder	1	2489	54	Shoulder washer	1	21981
43a	Fuse, 3 AG, 1 amp	1	22219	54a	Insulation washer	1	6892
44	Selector switch	1	57946	55	Contactor switch assy	1	55728-1
44a	Dial plate	1	21962	56	Resistor	2	54599
45	Milliammeter	1	22188	57	Stop cranking relay	1	55427
46	Diode	1	54023-1	58	Resistor	1	80258-5
47	Start/stop relay	1	50259	59	Line side contactor	1	55726
48	Transformer	1	24785	60	Generator side contactor	1	55727

Any parts required for gas engine portion of the unit should be obtained from the local engine manufacturer's service station.

PARTS LIST

MODEL P510WH-3R/B (NG or LP)



NOTE:
 INDICATES CUSTOMER TERMINATION POINT:
 L1, L2 & L3 ARE LINE TERMINALS
 T1, T2 & T3 ARE LOAD TERMINALS
 L2 & T2 ARE NEUTRAL TERMINALS

