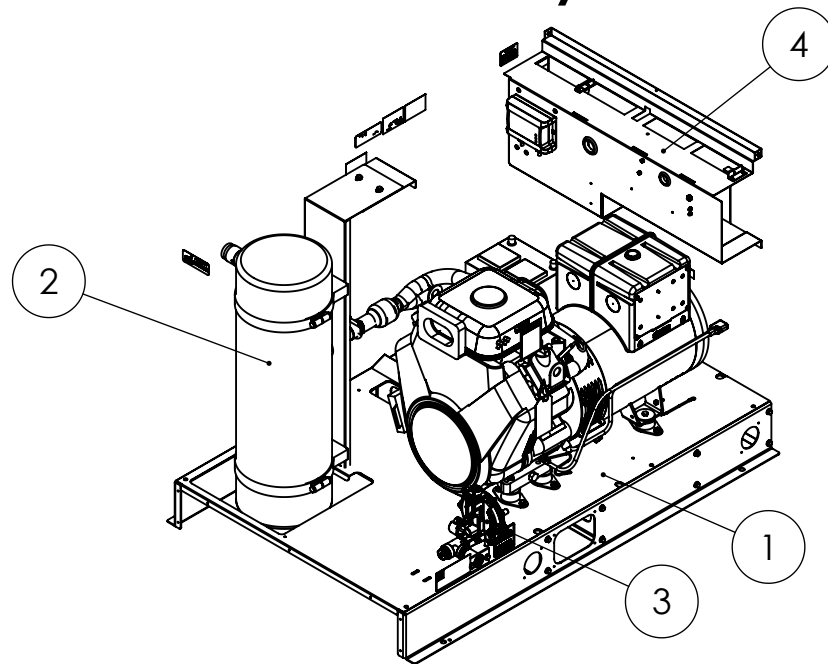


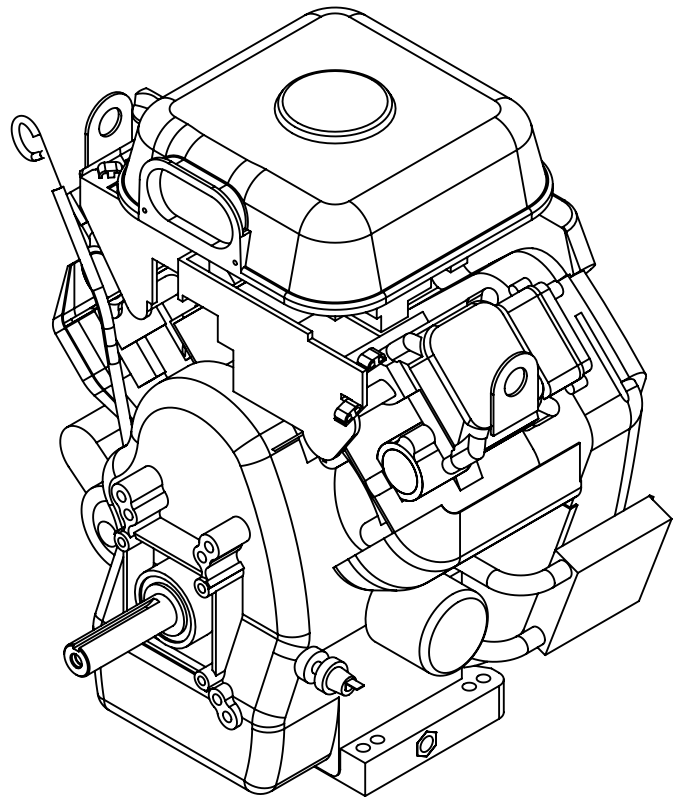
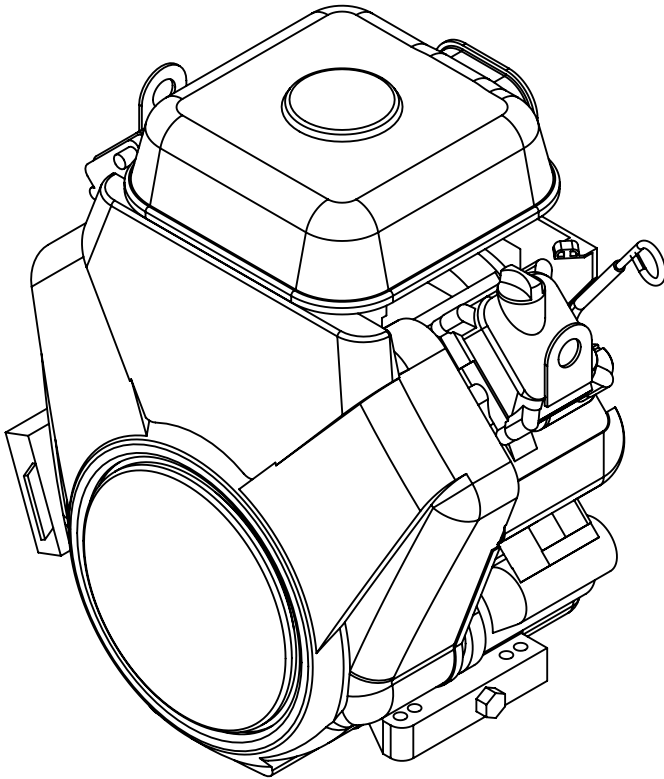
WINCO Service
Phone: 507-357-6831
Email: service@wincogen.com
www.wincogen.com

General Assembly



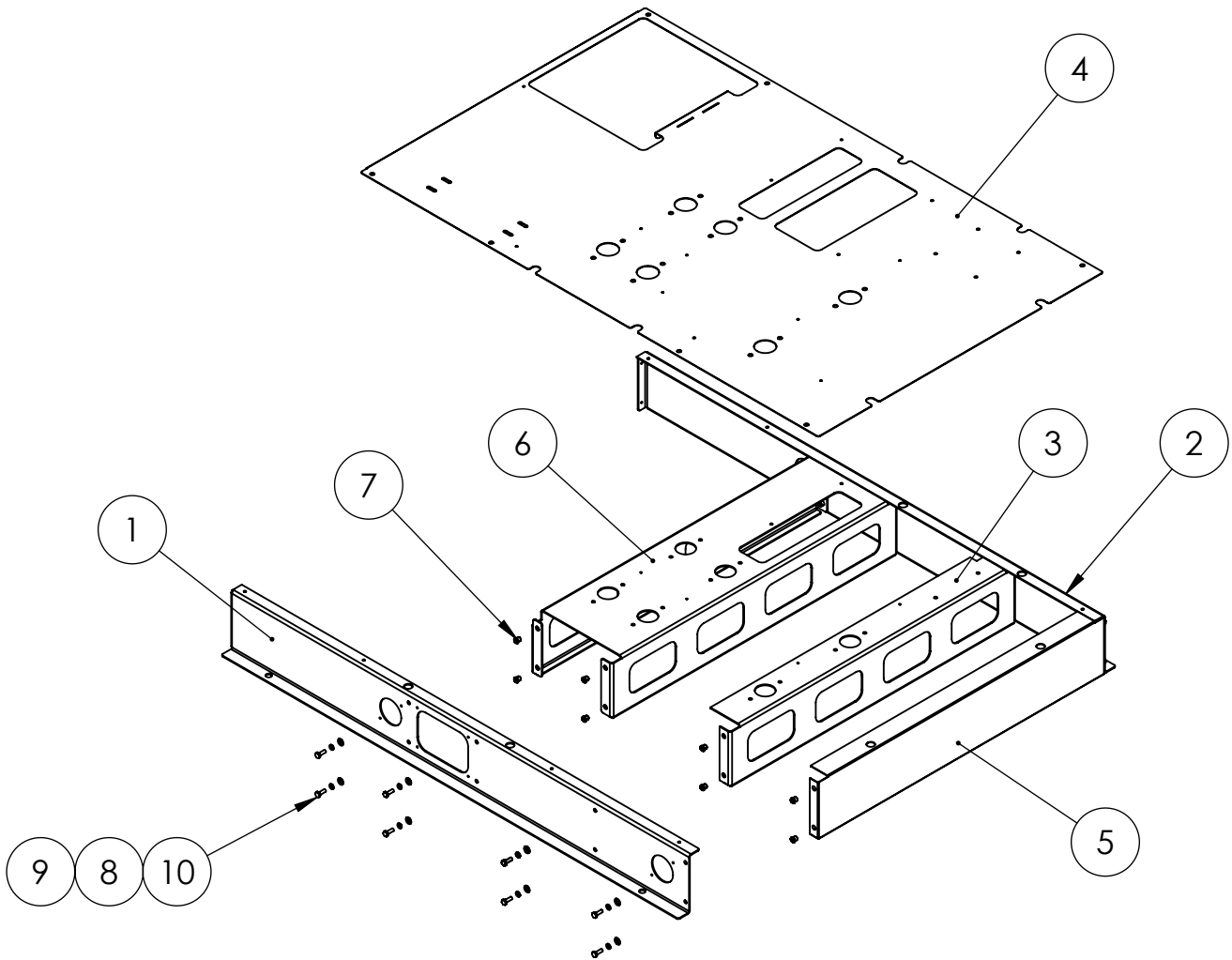
ITEM NO.	PART NUMBER	DESCRIPTION	QTY.
1	99998-078	ENGINE GENERATOR BASE ASSEMBLY	1
2	99998-500	EXHAUST SYSTEM INSTALLATION	1
3	99998-402	FUEL REGULATOR ASSEMBLY	1
4	99998-640	CONTROL TOWER ASSEMBLY	1
5	99998-635	HOUSING ASSEMBLY	1
6	99998-645	ENGINE GENERATOR BASE ASSEMBLY	1
7	64834-009	CORNER POST	4
8	97813-000	DECAL-WARNING CYCLE CRANK	2
9	15849-000	DECAL-STAND-BY SERVICE	1
10	63941-001	DECAL - HOT SURFACES	2
11	64891-001	DECAL-CSA, SEPAERATE PROTECTION	1
12	63941-003	DECAL-WARNING NO SPARK	1
13	63966-005	KIT, NAMEPLATE WINCO PSS	1
14	15209-003	UL-DECAL ELECTRICAL SHOCK CAN KILL	1
15	15209-103	UL-DECAL ELECTRICAL SHOCK CAN KILL	1
16	63941-004	DECAL FUSE WARNING (ENGLISH)	1
17	15209-004	DECAL WARNING LABEL JACK	1
18	91718-000	DECAL - RFI SPARK COMPLIANCE ICES-002	1
19	15209-002	DECAL - DANGER CARBON MONOXIDE	1
20	15209-102	DECAL - DANGER CARBON MONOXIDE	1
21	60710-018	OIL WARNING TAG	1
22	44791-000	TERMINAL CLOSED CONNECTOR	1
23	16200-509	MAINT KIT DECAL	1
24	F-205	FORM, AIR-COOLED WARRANTY VALIDATION	1
25	100054-514	BAG 54 X 52 X 60	1
26	81018-005	HOSE CLAMP 1.0625-.500	1
27	22807-000	FUEL TAG	1
28	15210-019	FUEL PRESSURE DECAL PSS20	1
29	15209-036	PROP 65 WARNING DECAL	1
33	15715-099	DECAL KIT, PACKAGING, AC PSS STYLE, NO STACK	1

Engine



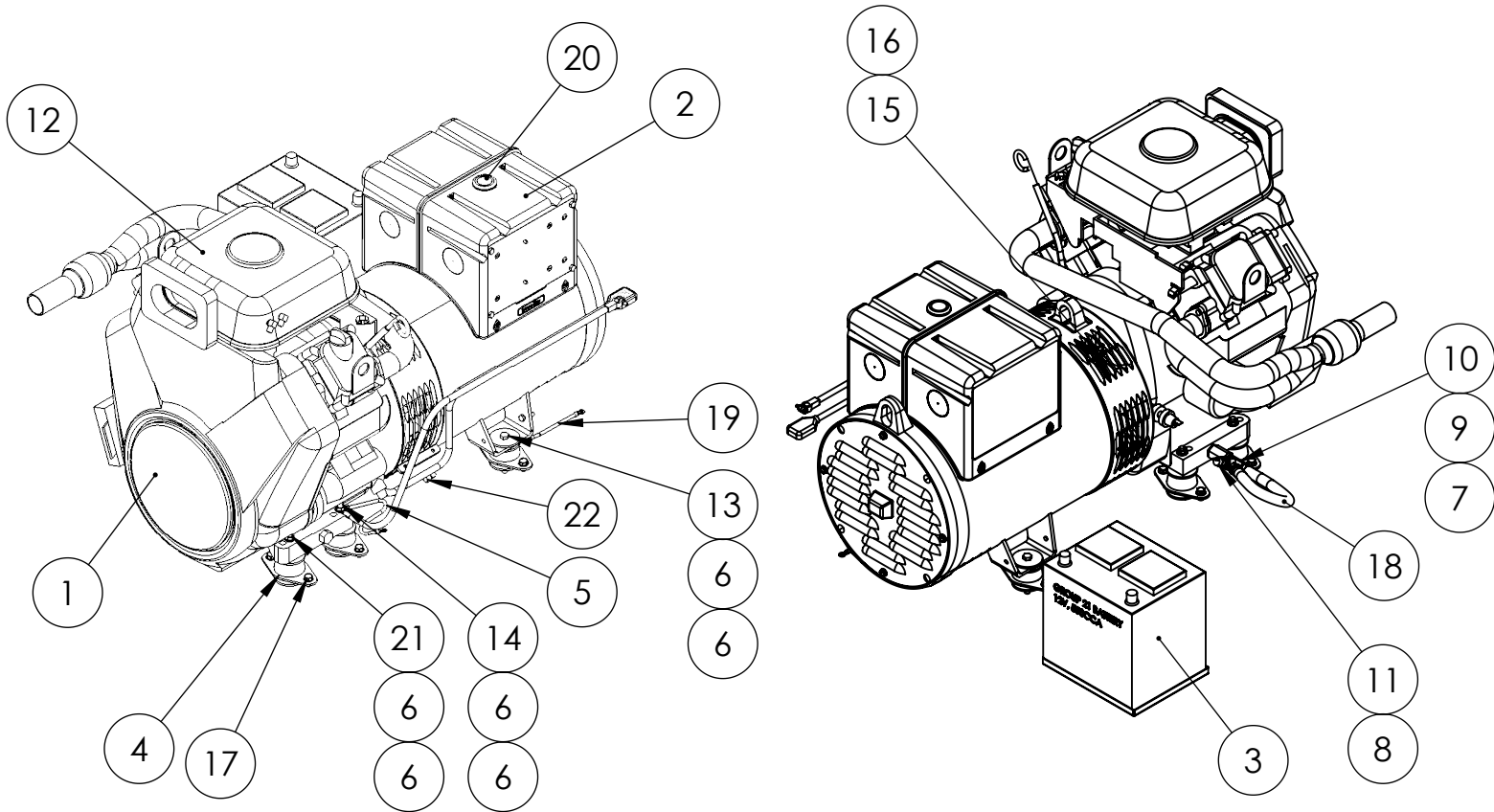
ITEM NO.	PART NUMBER	DESCRIPTION	QTY
1	2-104	PRE-AIR FILTER	1
2	2-116	AIR FILTER	1
3	2-109	SPART PLUGS	2
4	2-105	OIL FILTER	1
ALL ITEMS LISTED IN THE ABOVE TABLE ARE INCLUDED WITH 16200-011 MAINTENANCE KIT PURCHASE			
5	2-121	STARTER MOTOR	1
6	2-102	MANIFOLD GASKET	2
Contact WINCO service or your Honda dealer for full engine part support			

Base Assembly



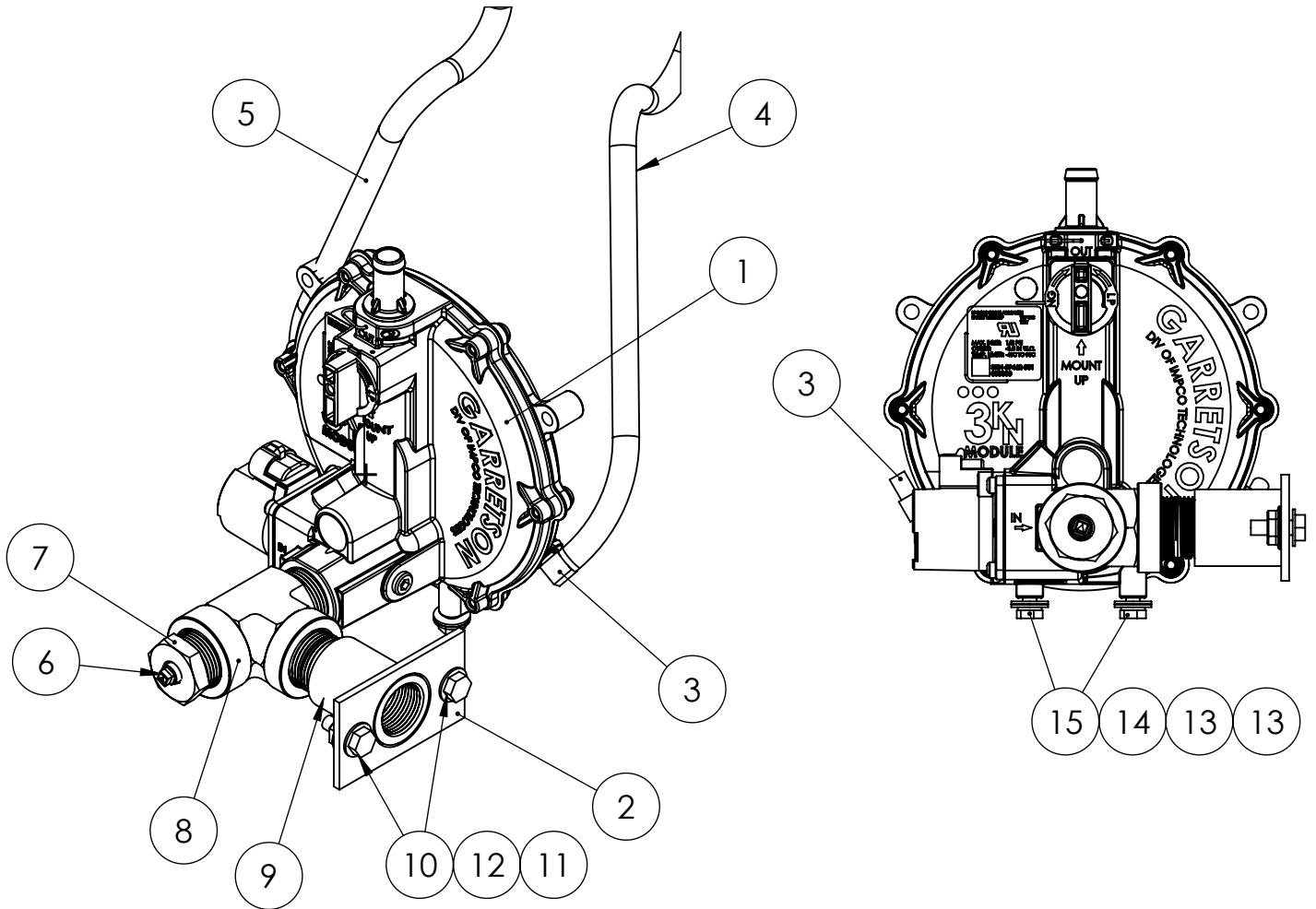
ITEM NO.	PART NUMBER	DESCRIPTION	QTY.
1	99998-641	LEFT SIDE RAIL	1
2	99998-642	RIGHT SIDE RAIL	1
3	99998-646	GENERATOR SUPPORT	1
4	99998-634	BASE TOP	1
5	99998-624	BASE END	1
6	99998-652	ENGINE SUPPORT	1
7	352125-1	1/4-20 RIVET NUT 22 GA-10GA	18
8	65003-000	SS LOCK WASHER ID.25 OD.475 TH.07	18
9	65005-000	.25 WASHER SS	18
10	65000-001	.25-20X.75 SS HHCS	18

Engine Generator Assembly



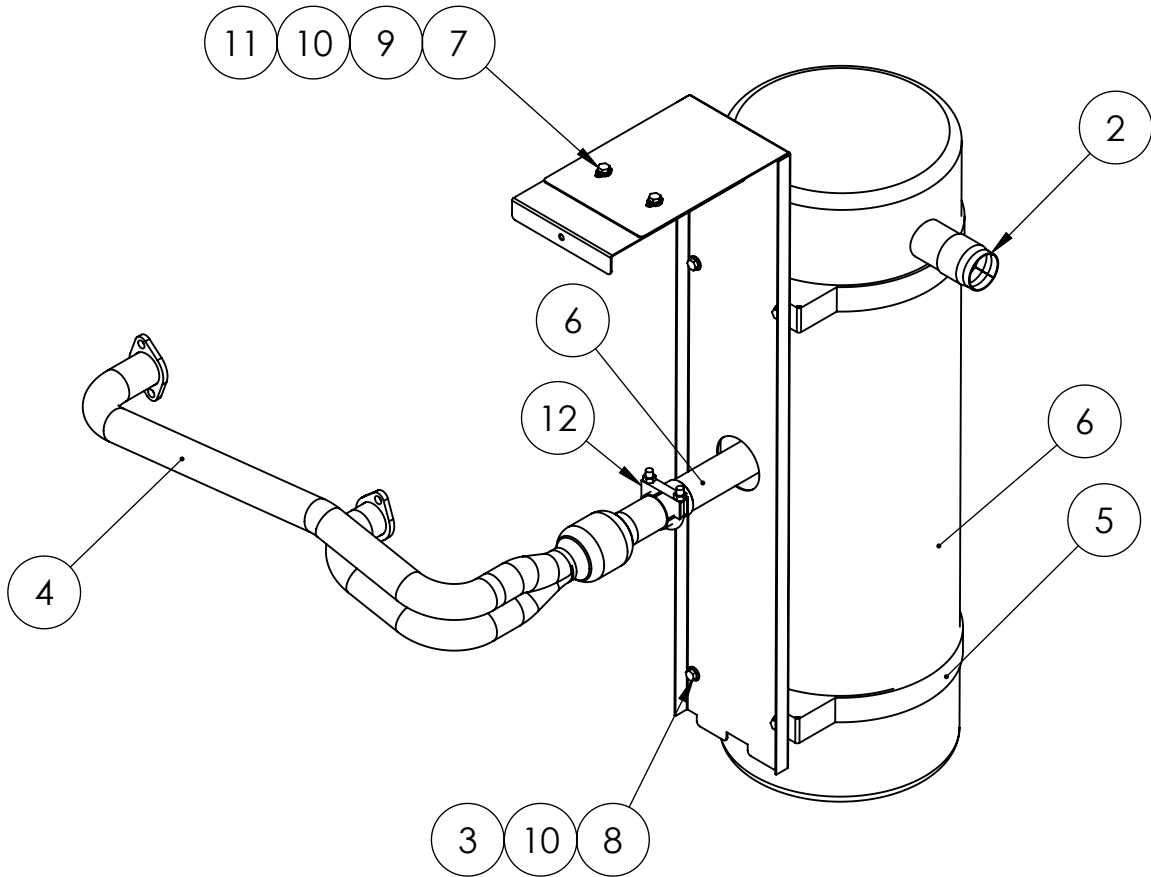
ITEM NO.	PART NUMBER	DESCRIPTION	QTY.
1	16419-000	ENGINE B&S 993CC 35HP LP/NG DRY FUEL	1
2	64887-004	GEN END, MECC ALTE MODEL ECP28C-3L_2	1
3	99998-300	(BATTERY TRAY INSTALLATION)	1
4	98807-000	SHOCKMOUNT 40 DURO	6
5	9769-145	LEAD WIRE ASSEMBLY	1
6	98806-000	WASHER .406 X 2	14
7	96187-001	OIL DRAIN GASKET M14 ID	1
8	56348-000	FITTING, REDUCER, 3/8 X 1/4	1
9	300349-1	OIL DRAIN ADAPTER	1
10	99967-000	STREET TEE FITTING	1
11	15808-000	TEMPERATURE SWITCH 320R	1
12	99998-120	INTAKE MODIFICATION	1
13	51101-000	.3125-18 X 2.75 HHCS	2
14	91107-001	HHCS .3125-18 X 3.75	1
15	91658-001	.375 - 16 X1 HHB	4
16	630-000	LOCKWASHER 3/8 INTERNAL TOOTH ZINC	4
17	62173-001	SELF TAP.SC. 5/16-18X.5	12
18	93079-004	OIL DRAIN HOSE 26INCH .375NPT	1
19	9769-145	LWA 10GA GREEN, 6.5", #10 TERM 1/4" TERM	1
20	62486-000	GROMMET 1 X 1.375	1
21	91107-000	5/16-18 X 3.5	3
22	44791-000	TERMINAL CLOSED CONNECTOR	1
23	16249-000	.3125-18 FLANGE	6

Fuel Regulator Assembly



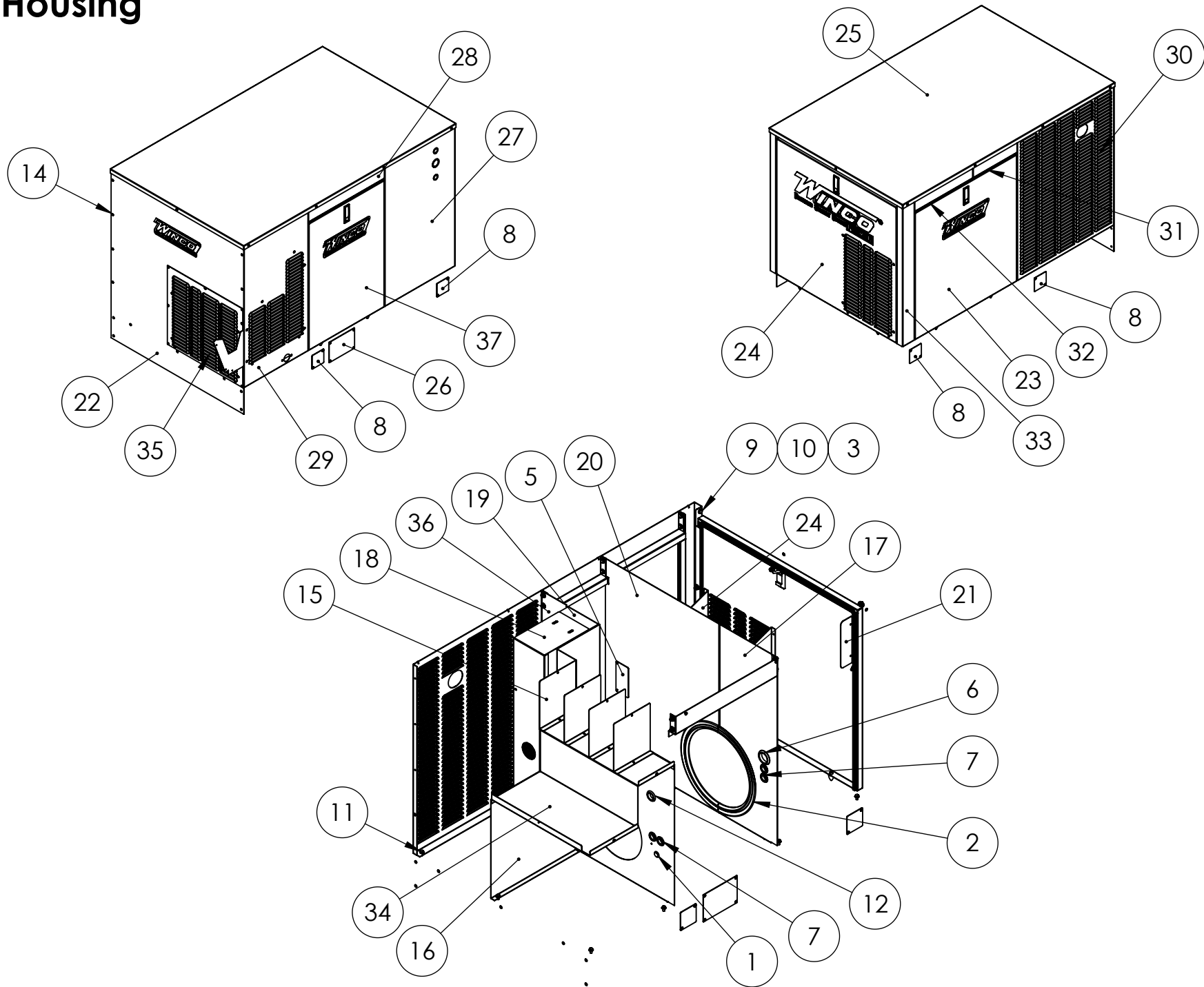
ITEM NO.	PART NUMBER	DESCRIPTION	QTY.
1	55559-004	FUEL REGULATOR	1
2	99085-013	FUEL INLET ASSEMBLY	1
3	81827-001	1/8" HB 90 DEG	2
4	40078-024	HOSE 1/4IN RUBR 22.75IN CUT	1
5	40078-024	HOSE 1/4IN RUBR 22.75IN CUT	1
6	644-000	PIPE PLUG .125	1
7	63788-001	HEX REDUCER BUSHING 3/4 NPT M X 1/8 NPT F	1
8	94907-002	PIPE TEE .75X.75X.75 NPT F-F-M	1
9	22626-000	PIPE NPL 3/4NPTXCLOSE (1-1/8)	1
10	65000-001	.25-20X.75 SS HHCS	2
11	16248-000	.25-20 FLANGE NUT	2
12	65005-000	.25 WASHER SS	2
13	512-000	.25 WASHER	4
14	479-000	LOCK WASHER, .25" SPLIT	2
15	75139-020	HHCS M6-1X20MM ZINC	2

Exhaust System Assembly



ITEM NO.	PART NUMBER	DESCRIPTION	QTY.
2	16237-002	SPARK ARRESTOR	1
3	16248-000	.25-20 FLANGE NUT	4
4	16470-005	EXHAUST MANIFOLD ASSEMBLY	1
5	350264-1	MOUNTING BAND	2
6	350590-10	MUFFLER 8"DIA PSS20	1
7	466-000	.25-20X.75 HHB	2
8	476-000	HHCS 1/4-20X5/8	4
9	479-000	LOCK WASHER .25IN ID.	2
10	512-000	.25 WASHER	6
11	92495-000	.25-20 16GA TINNEMAN NUT	2
12	93489-015	1.5ID EXHAUST CLAMP	1

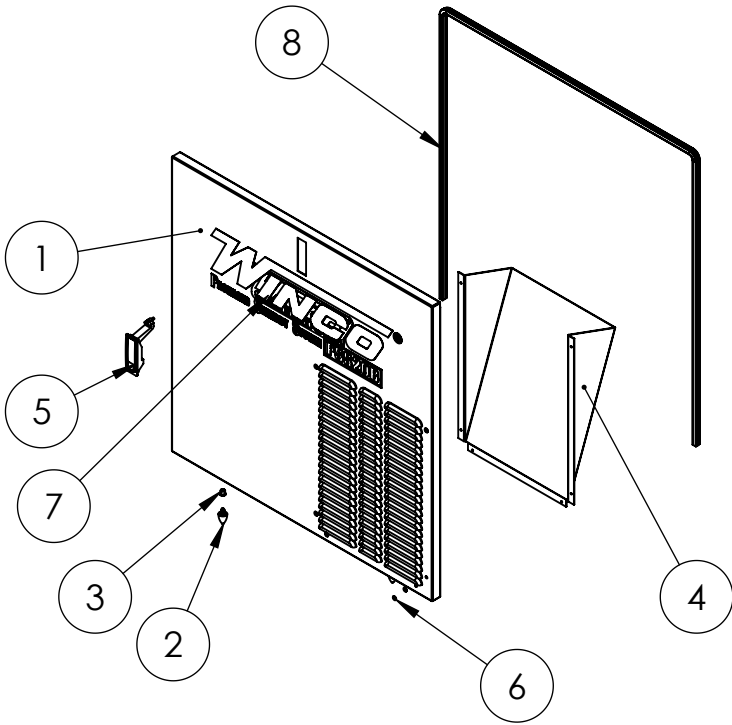
Housing



Housing Continued

ITEM NO.	PART NUMBER	DESCRIPTION	QTY.
1	15102-001	HOLE PLUG 7/8 POLY	1
2	15287-025	AIR SEAL 20.50"	2
3	16248-000	.25-20 FLANGE NUT	16
4	16348-000	BULB SEAL 20FT	1
5	16440-002	HEATER HOLE COVER	1
6	23917-004	GROMMET 1.5" ID	1
7	23917-000	GROMMET .6875ID X 1	4
8	300385-6	LIFTING EYE COVER	4
9	476-000	HHCS 1/4-20X5/8	14
10	512-000	.25 WASHER	14
11	55440-000	.25-20X.5 SELF TAP	15
12	62486-000	GROMMET 1 X 1.375	1
13	94980-001	THREAD STUD .25-20X.625	2
14	96286-002	FLAT WASHER NYLON	46
15	99998-105	EXHAUST BAFFLE PANEL	4
16	99998-106	ENGINE INTAKE BAFFLE	1
17	99998-113	(GENERATOR DIVIDER LEFT)	1
18	99998-139	MUFFLER BRACKET	1
19	99998-147	MUFFLER BRACKET SUPPORT	1
20	99998-618	GENERATOR DIVIDER RIGHT	1
21	99998-619	REAR LEFT PANEL SIDE	1
22	99998-620	FRONT PANEL ASSEMBLY	1
23	99998-621	RIGHT SIDE DOOR ASSEMBLY	1
24	99998-622	REAR DOOR SSEMBLY	1
25	99998-623	(ROOF)	1
26	99998-625	BASE SIDE COVER	1
27	99998-627	REAR LEFT PANEL	1
28	99998-628	OVERHEAD BEAM SIDE DOOR ONE	1
29	99998-629	INTAKE SHROUD ASSEMBLY	1
30	99998-630	EXHAUST SHROUD	1
31	99998-631	OVERHEAD BEAM RIGHT SIDE DOOR	1
32	99998-632	OVERHEAD BEAM SIDE DOOR TWO	1
33	99998-633	REAR RIGHT PANEL	1
34	99998-636	COLD AIR DIVIDER	1
35	99998-649	LOUVER PANEL ASSEMBLY	1
36	99998-651	ENGINE DIVIDER	1
37	99998-655	LEFT SIDE DOOR	1

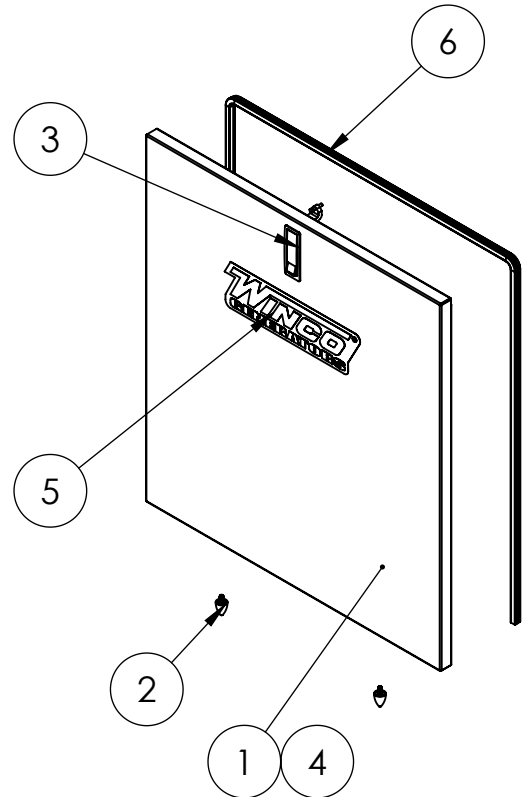
Rear Door Assembly



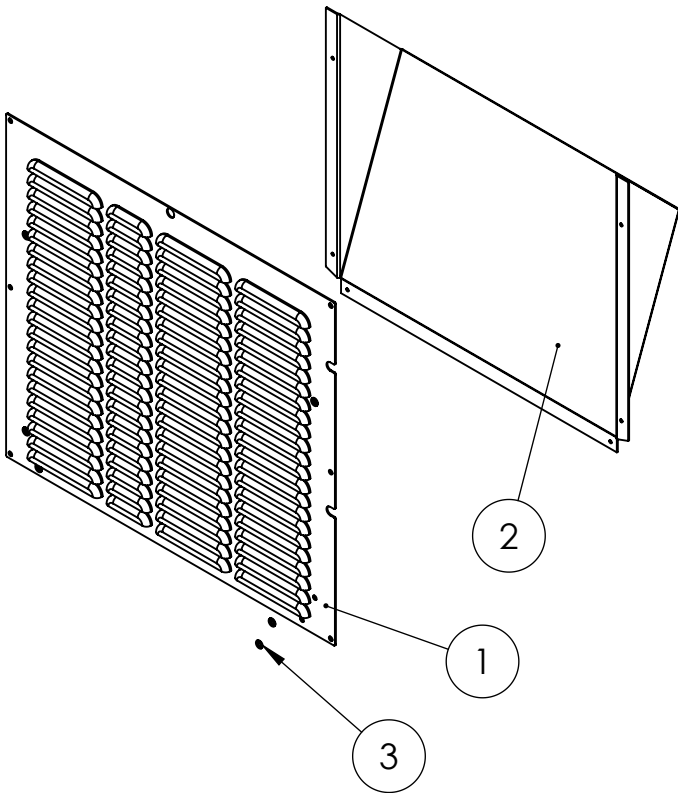
ITEM NO.	PART NUMBER	DESCRIPTION	QTY.
1	99998-622	REAR DOOR	1
2	99269-005	THREADED STUD RUBBER BUMPER, 22LBS MAX LOAD 3810N178	2
3	352125-1	1/4-20 RIVET NUT 22 GA-10GA	2
4	99998-131	(REAR DOOR VENT BAFFLE)	1
5	95229-005	DOOR LATCH	1
6	96286-002	FLAT WASHER NYLON	6
7	98313-006	WINCO DECAL	1
8	16348-009	BULB SEAL .2 IN .125 88.75IN	1

Right Side Door Assembly

ITEM NO.	PART NUMBER	DESCRIPTION	QTY.
1	99998-621	RIGHT SIDE DOOR	1
2	99269-005	THREADED STUD RUBBER BUMPER, 22LBS MAX LOAD 3810N178	2
3	95229-005	DOOR LATCH	1
4	352125-1	1/4-20 RIVET NUT 22 GA-10GA	2
5	98313-006	WINCO DECAL	1
6	16348-007	BULB SEAL .2 IN .125 79.5IN	1



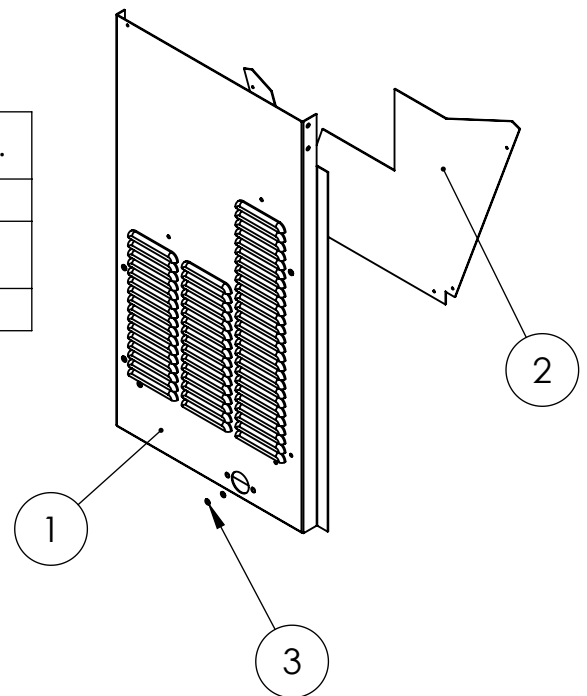
Louver Panel Assembly



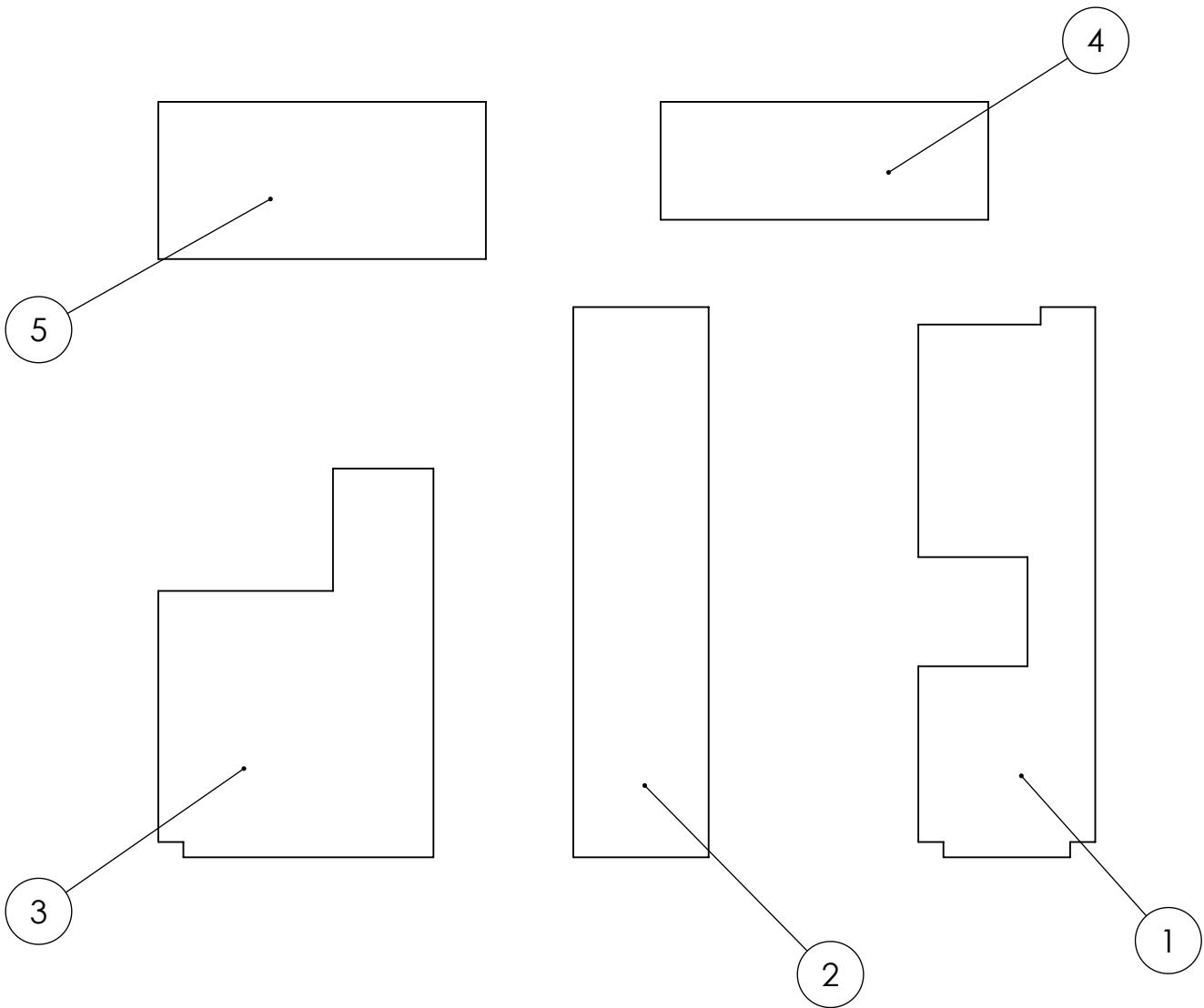
ITEM NO.	PART NUMBER	DESCRIPTION	QTY.
1	99998-649	FRONT LOUVER PANEL	1
2	99998-132	COLD AIR INTAKE VENT BAFFLE BOTTOM	1
3	96286-002	FLAT WASHER NYLON	6

Intake Shroud Assembly

ITEM NO.	PART NUMBER	DESCRIPTION	QTY.
1	99998-629	INTAKE SHROUD	1
2	99998-133	(COLD AIR INTAKE VENT BAFFLE TOP)	1
3	96286-002	FLAT WASHER NYLON	6

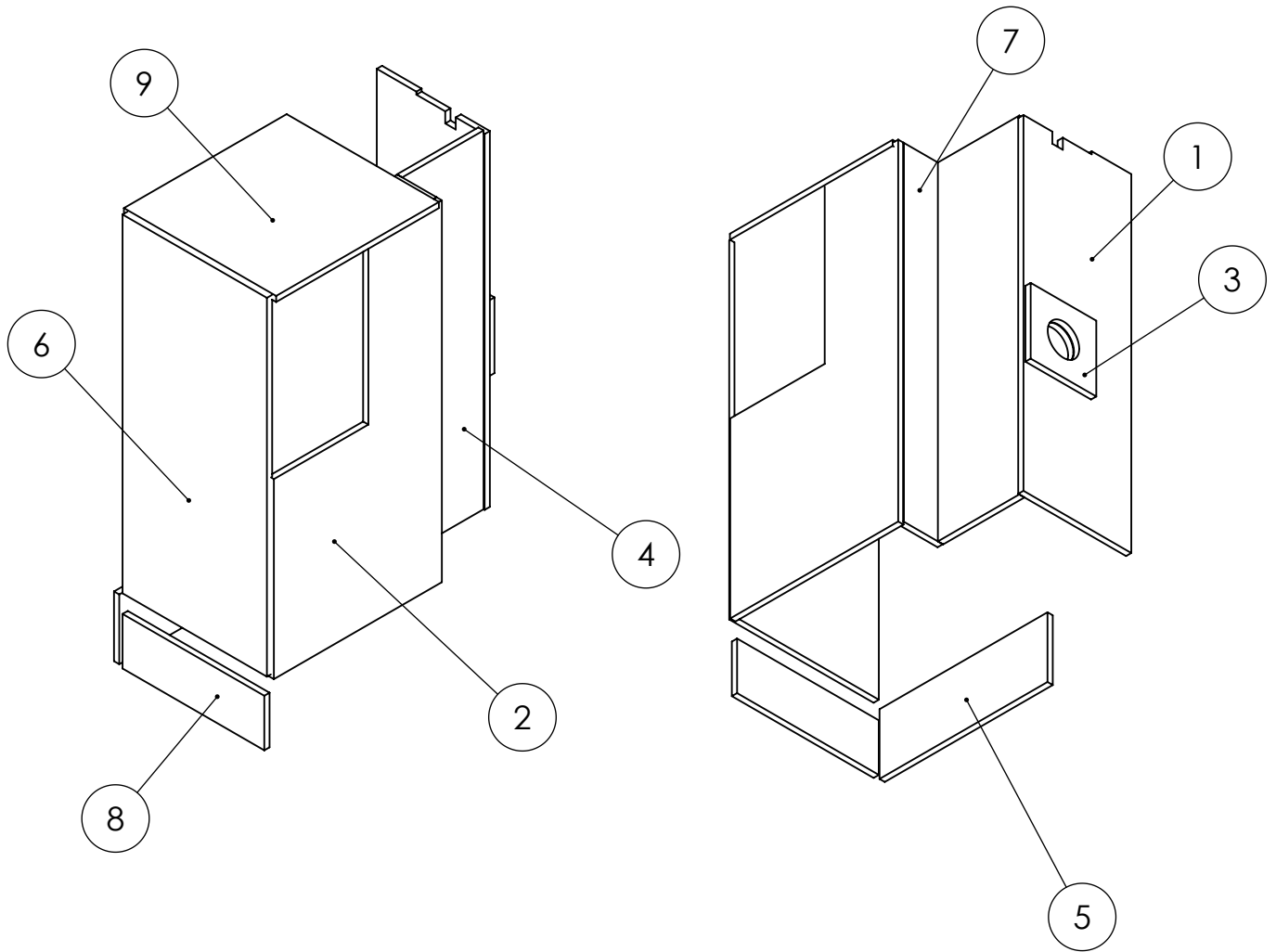


FOAM KIT



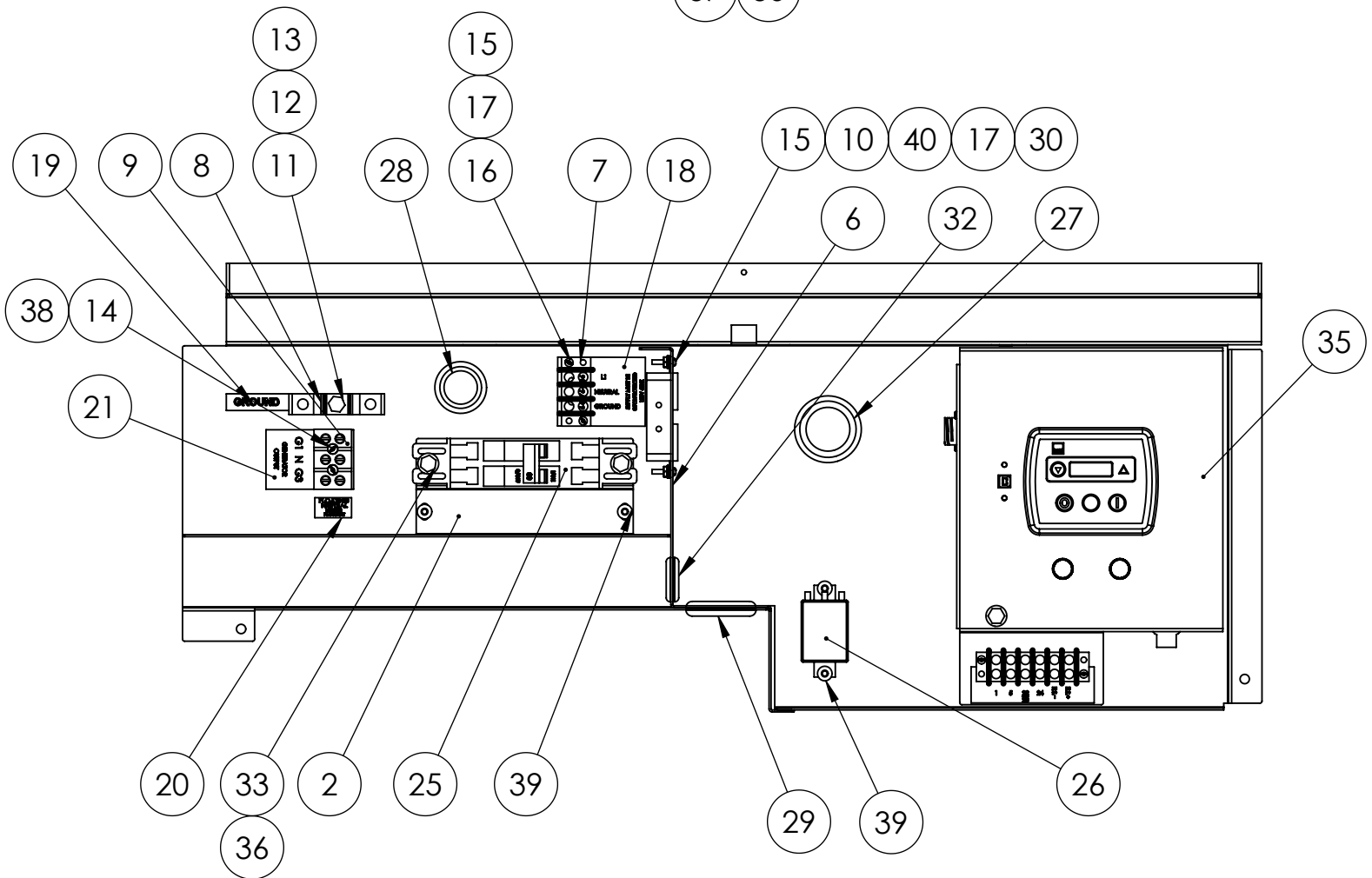
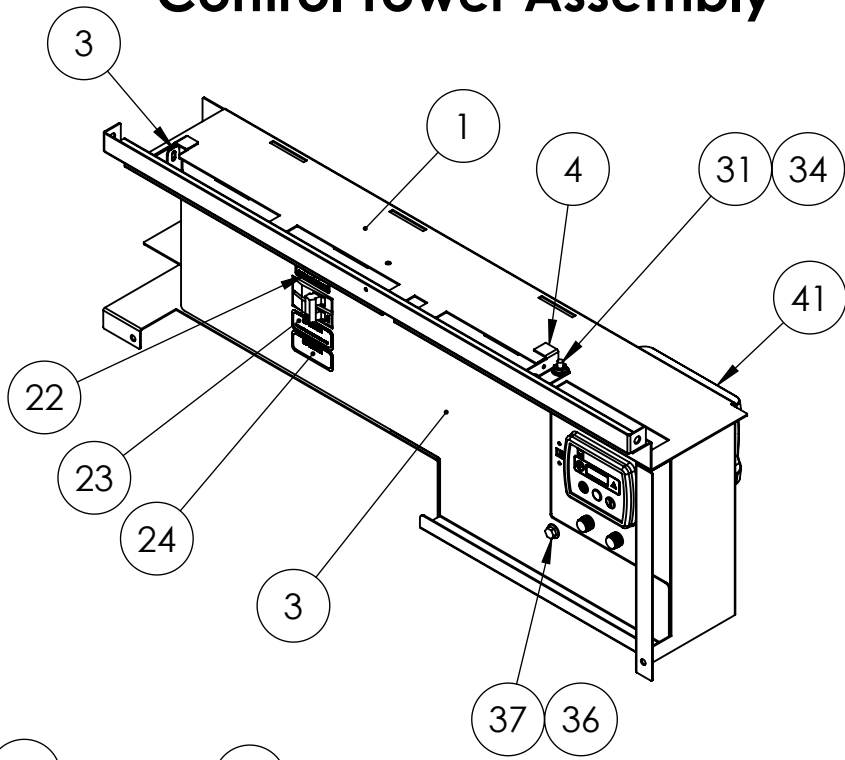
ITEM NO.	PART NUMBER	DESCRIPTION	QTY.
1	99998-152	(FOAM ENGINE DIVIDER ONE)	1
2	99998-153	(FOAM ENGINE DIVIDER TWO)	1
3	99998-159	(FOAM INTAKE BAFFLE THREE)	1
4	99998-154	(FOAM COLD AIR DIVIDER TOP)	1
5	99998-155	(COLD AIR DIVIDER BOTTOM)	1

FOAM KIT



ITEM NO.	PART NUMBER	DESCRIPTION	QTY.
1	99998-176	(REFLECTIVE FOAM ENGINE DIVIDER ONE)	1
2	99998-177	(REFLECTIVE FOAM COLD AIR DIVIDER)	1
3	99998-178	(REFLECTIVE FOAM ENGINE DIVIDER TWO)	1
4	99998-179	(REFLECTIVE FOAM ENGINE DIVIDER TWO)	1
5	99998-180	FOAM	1
6	99998-181	(REFLECTIVE FOAM FRONT PANEL)	1
7	99998-182	(REFLECTIVE FOAM ENGINE DIVIDER THREE)	1
8	99998-183	(REFLECTIVE FOAM FRONT PANEL TWO)	1
9	99998-185	(REFLECTIVE FOAM ROOF)	1

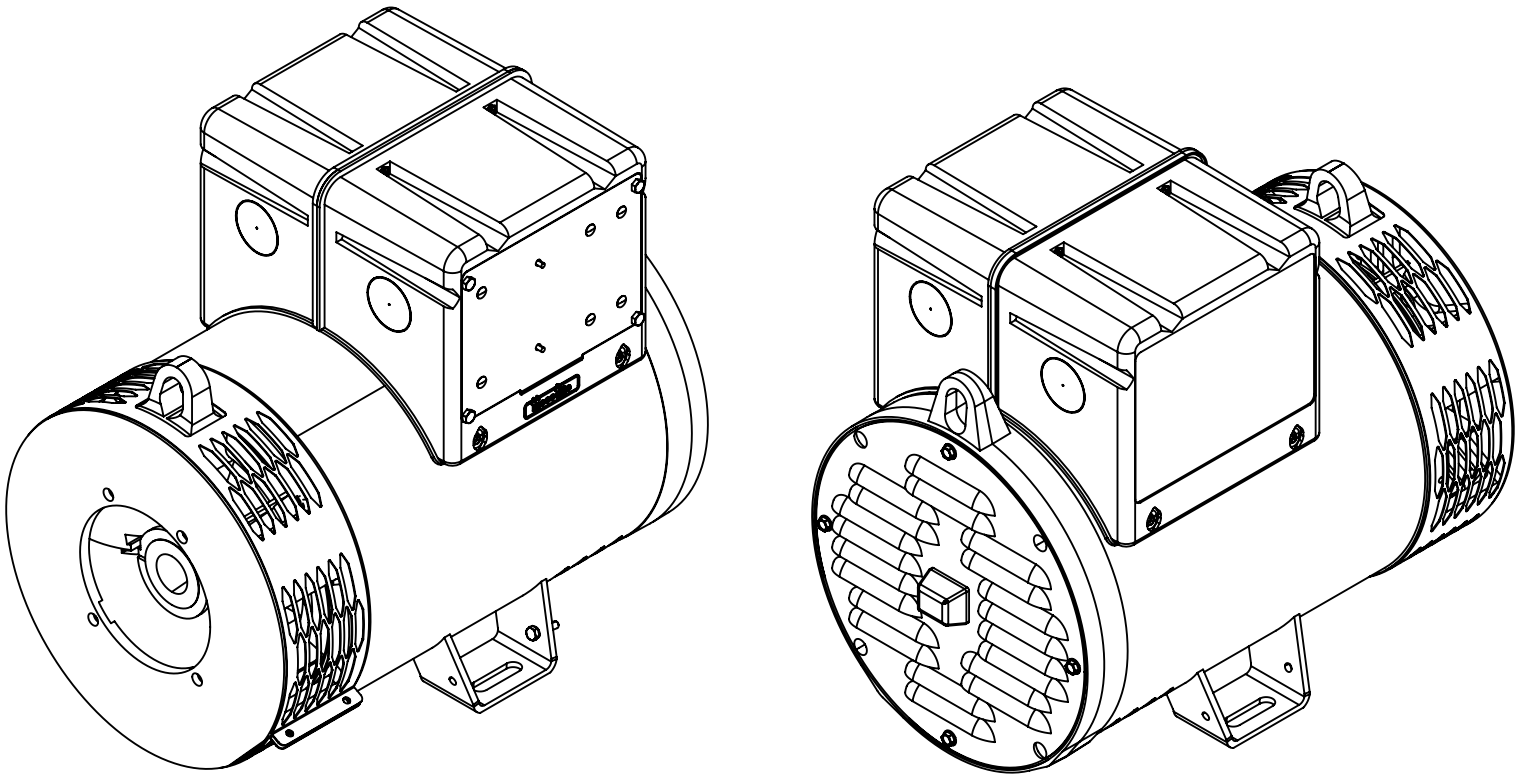
Control Tower Assembly



Control Tower Assembly Continued

ITEM NO.	PART NUMBER	DESCRIPTION	QTY.
1	99998-639	CONTROL BOX HOUSING	1
2	99998-209	CIRCUIT BREAKER RISER	1
3	99998-638	MLCB COVER	1
4	99998-207	(RIGHT MLCB COVER HINGE)	1
5	99998-208	LEFT MLCB COVER HINGE	1
6	99998-637	(CONTROL BOX DIVIDER)	1
7	80623-005	TERMINAL BLOCK, 3PT, 20A	1
8	48043-000	TERMINAL GROUND	2
9	51795-000	3 PT TERMINAL BLOCK	1
10	24749-000	RECEPTACLE NEMA 5-15R DUPLEX	1
11	466-000	.25-20X.75 HHB	1
12	4516-000	LOCKWASHER 1/4 EXTERNAL TOOTH	2
13	638-000	HEX NUT, .25IN	1
14	10846-000	RHMC 8-32 X 1.5	2
15	7792-000	RHMS 6-32 X .625	4
16	6376-000	#8 LOCKWASHER	2
17	394-000	NUT HEX #6-32	4
18	64576-006	DECAL-GFCI PROTECTED UTILITY	1
19	15750-001	GROUND DECAL	1
20	16501-000	DECAL-FLOATING NEUTRAL	1
21	64576-005	DECAL-GENERATOR OUTPUT	1
22	16502-001	DECAL-AC POWER DISCONNECT	1
23	16503-000	DECAL-COPPER CONDUCTORS ONLY	1
24	63941-005	DECAL-CIRCUIT REMAINS ENERGIZED	1
25	57030-010	CIRCUIT BREAKER 80A, 2PL 240V	1
26	59944-002	RELAY, 12VDC, SPDT, 10AMP	1
27	23917-005	GROMMET 1-5/16" ID	1
28	62486-000	GROMMET 1 X 1.375	1
29	23917-004	GROMMET 1.5" ID	1
30	22989-000	#6 LOCKWASHER	2
31	94980-001	THREAD STUD .25-20X.625	2
32	23917-000	GROMMET .6875ID X 1	1
33	463-000	HEX BOLT .25-20X.50	2
34	16248-000	.25-20 FLANGE NUT	4
35	15764-016	2-WIRE ENGINE CONTROL	1
36	512-000	.25 WASHER	3
37	476-000	HHCS 1/4-20X5/8	1
38	95985-000	NUT HEX #8-32 NYLOK	2
39	598-000	#10 WASHER	8
40	425-000	#6 FLATWASHER	4
41	72036-022	BATTERY CHARGER, 12VDC, 1.5AMP, GUEST 2701A	1
42	22370-035	TERM SPADE, 22-18AWG, #10 STUD	6
43	99998-205	LEAD WIRE ASSEMBLY	1
44	99998-212	DC HARNESS	1

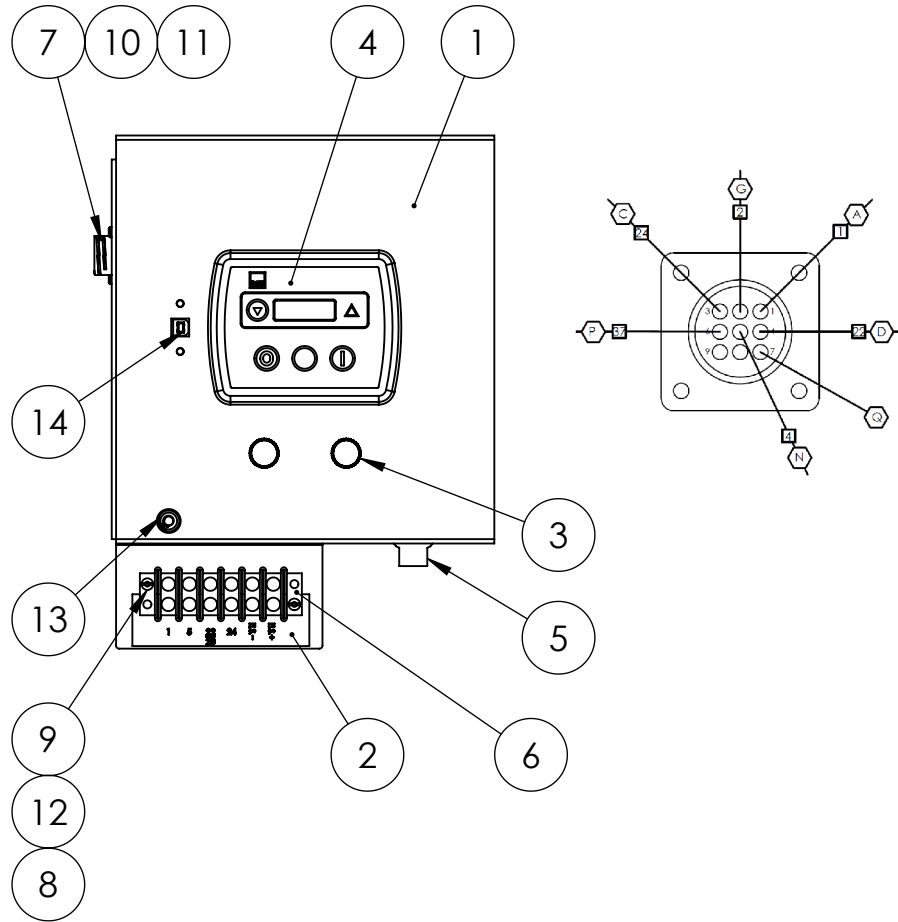
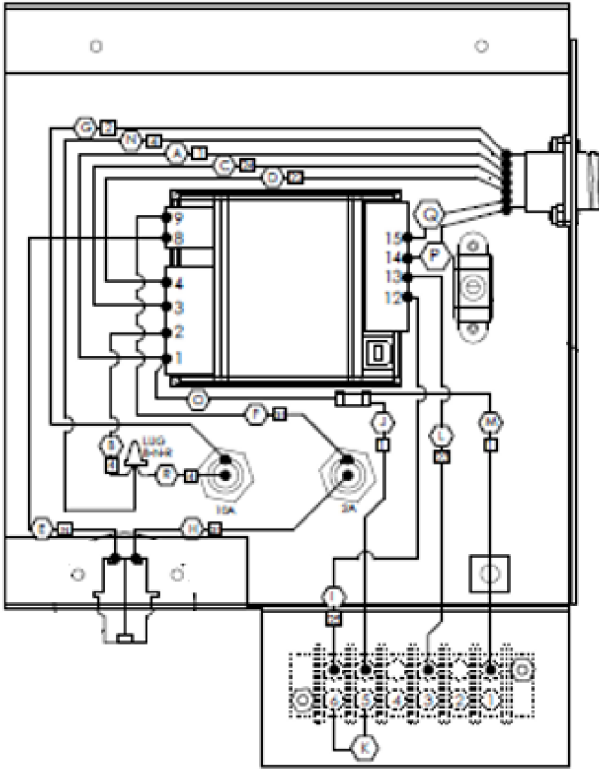
Generator



REF #	PART NUMBER	QTY	DESCRIPTION
N/A	64887-003	1	COMPLETE GENERATOR ASSEMBLY
<p>The gen end used on this model is a special tapered shaft not illustrated in the drawing. Call WINCO Service Department for details</p>			

EXPECTED RESISTANCE (Ω)		
ROTOR	STATOR	EXCITATION
5.848	0.086	1.087

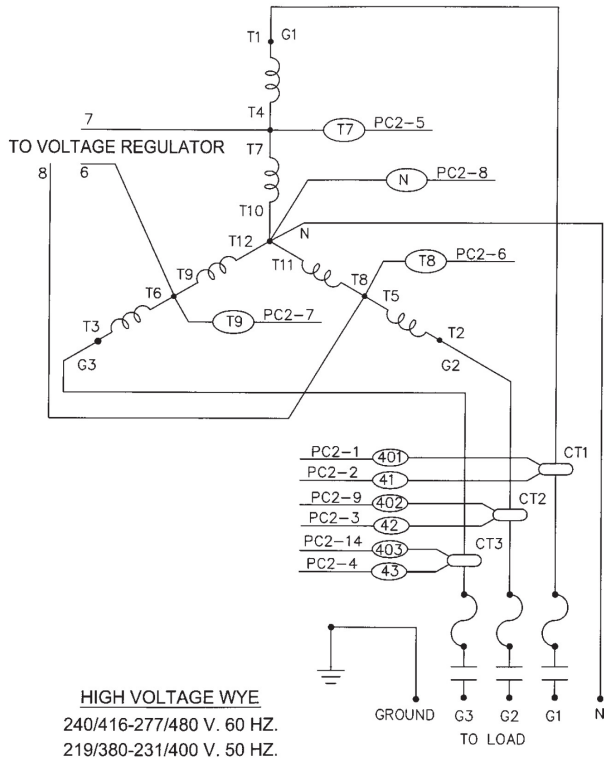
2 Wire Control Assembly



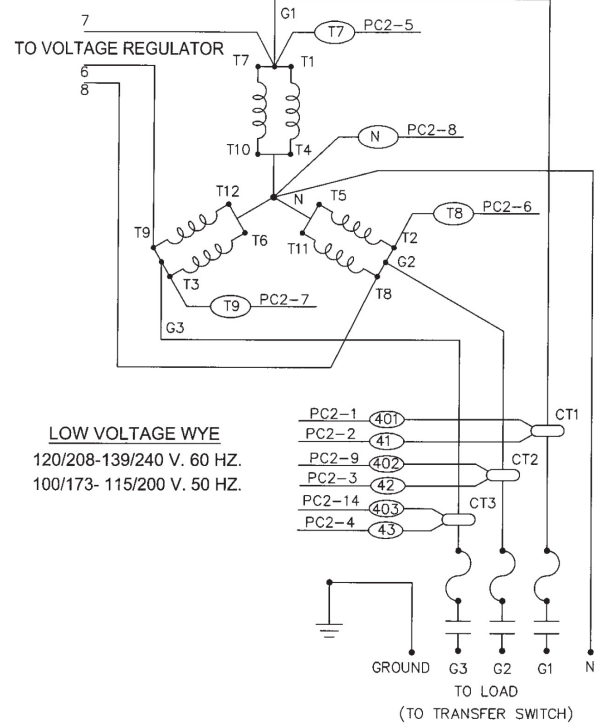
ITEM NO.	PART NUMBER	DESCRIPTION	QTY.
1	15667-018	DSE MOUNT	1
2	64576-018	DECAL-6PT REMOTE START	1
3	2489-001	FUSE HOLDER	2
4	351112-5	DSE 3110	1
5	61640-000	2 PIN PLUG	1
6	80623-000	TERMINAL BLOCK, 6PT, 20A	1
7	96925-005	CONNECTOR, RECEPT., 9 POSITION	1
8	394-000	NUT HEX #6-32	2
9	7792-000	RHMS 6-32 X .625	2
10	97322-000	RHMS 4-40X3/8	2
11	97327-000	HEX NUT 4-40 NYLOK	2
12	22989-000	#6 LOCKWASHER	2
13	352125-1	1/4-20 RIVET NUT 22 GA-10GA	1
14	92844-005	USB CABLE B MALE TO B FEMALE PANEL MOUNT	1

Generator Connections

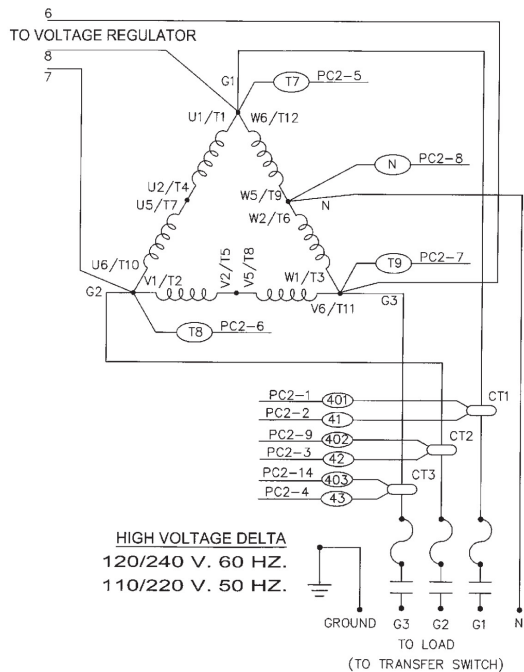
THREE PHASE - HIGH WYE 277/480V



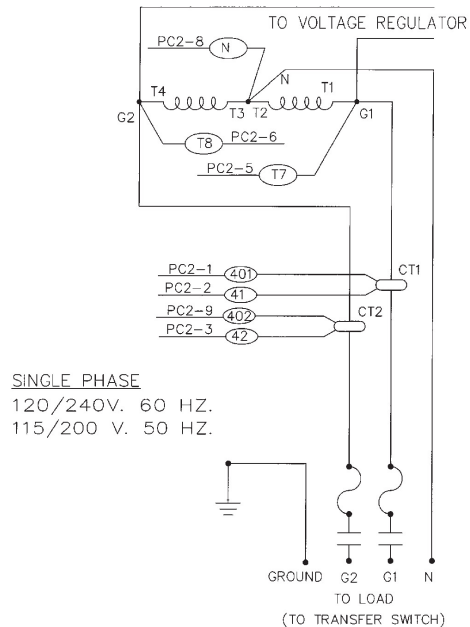
THREE PHASE - LOW WYE 120/208V



THREE PHASE DELTA 120/240V



SINGLE PHASE 120/240V



DC WIRING SCHEMATIC

