

**SWITCHABLE
VOLTAGE
TRAILER MOUNT
DIESEL**

**MODEL
MDS25-R3**


000-99226-A

TABLE

PART NO	MODEL NO.	ITEM 1	ITEM (2)	QTY. 2	QTY. 3	QTY. 4	QTY. 5	QTY. 6	QTY. 7	QTY. 8
A-99226-001	MD 25	A-99239-000	C-99181-000 (NO BRAKES)	1	8	8	8	1	1	1
A-99226-002	MD 25	A-99239-000	C-99181-001 (HYD.BRAKES)	1	8	8	8	1	1	1
A-99226-003	MD 25	A-99239-000	C-99181-002 (NO BRAKES)	1	8	8	8	1	1	1
A-99226-004	MD 25	A-99239-000	C-99181-003(NO BRAKES,REINFORCED TONGUE)	1	8	8	8	1	1	1
A-99226-005	MDS25/B	A-99239-002	C-99181-003	1	8	8	8	1	1	1
A-99226-006	MDS25/B	A-99239-002	C-99181-004 HYD. BRAKES	1	8	8	8	1	1	1
A-99226-007	MDS25/B	A-99239-003	C-99181-003 (W/BLOCK HEATER)	1	8	8	8	1	1	1
A-99226-008	MDS25/B	A-99239-002	NO TRAILER	0	0	0	0	1	0	0
A-99226-009	MDS25/C	A-99239-004	99181-005 (TANK & TRAILER COMBINATION)	1	8	8	8	1	1	1

NOTE:

INSTALL ITEM (1) ON ITEM (2) USING THE SPECIFIED HARDWARE. ENGINE TO BE FACING TONGUE OF TRAILER.

8	98372-016	TABLE	CERTIFICATE OF ORIGIN
7	60710-110	TABLE	EPA FORM
6	B-99283-000	TABLE	DECAL INSTALLATION
5	636-000	TABLE	LOCKWASHER,SPLIT 1/2
4	1744-000	TABLE	HEX NUT 1/2-13
3	48178-000	TABLE	HHCS 1/2-13 X 1
2	SEE TABLE	TABLE	TRAILER ASSEMBLY
1	SEE TABLE	1	ENG\GEN UNIT ASS'Y
ITEM	PART NO	QUAN.	DESCRIPTION
UNLESS OTHERWISE SPECIFIED		MACHINED SURFACE TEXTURE	ALL DIMENSIONS GIVEN IN INCHES
FRACTIONS ±		ANGULAR ± 1.5°	WORK TO DIMENSIONS
1. PLACE DEC. ± .1			- DO NOT SCALE -
2. PLACE DEC. ± .015			
3. PLACE DEC. ± .005			
THIS DRAWING CONTAINS PROPRIETARY INFORMATION BELONGING TO WINCO, UNAUTHORIZED USE IS PROHIBITED.	DRAWN BY	DATE	CH'KD BY
	R.D.D.	5-6-94	
	DATE	APP'D BY	DATE
		R.H.	7-18-94
SCALE 1=6			
MATERIAL:			
FINISH	TITLE		
ASS'Y	COMPLETE UNIT ASSEMBLY		
MODEL	SEE TABLE	PART NO.	
		A-99226-000	

65766-V

TABLE


PART NO.	ITEM (1)	ITEM (3)	ITEM (5)	QTY. (16)	MODEL
A-99239	A-99122	B-99183	A-99256	-	MDS25
A-99239-1	A-99122-1	B-99183	A-99256	4	MDS25
A-99239-2	A-99122	B-99183	A-99256-2	-	MDS25/B
A-99239-3	A-99122	B-99183-1	A-99256-2	-	MDS25/B
A-99239-4	A-99122-1	B-99183	A-99256-2	-	MDS25/C

QTY.	DESCRIPTION
1	SEE TABLE FUEL SYSTEM
2	B-99136 BASE WELDMENT
3	SEE TABLE ENGINE GENERATOR SET INSTALLATION
4	C-99211-1 HOUSING ASSEMBLY
5	SEE TABLE CONTROL ASSEMBLY
6	A-99188 ANGLE ASSEMBLY
7	B-99163 LIFTING YOKE WELDMENT— <u>TORQUE ALL 16 BOLTS TO 46 FT.LBS.</u>
8	B-92212-1 EYE WELDMENT
9	C-99253 EXHAUST ASSEMBLY
10	A-99252 OIL DRAIN ASSEMBLY
11	B-99178 AIR CLEANER ASSEMBLY
12	B-94242 SEAL WIRE
13	A-99288 BATTERY RACK KIT
14	A-99398 WIRING COMPONENTS
15	91335 6.5 FT SLEEVING, UNCUT
16	A-99114-2 TABLE BRACKET, MOUNTING

HARDWARE REQUIRED

17	48178	16	H.H.C.S. 1/2-13 X 1 GRADE 5
18	636	8	LOCKWASHER 1/2 SPLIT
19	1744	8	HEX NUT 1/2-13 UNC
20	57580	8	H.H.C.S. 1/2-13 X 1.5 GRADE 5
21	92242	16	ELASTIC STOP NUT 1/2-13 UNC
22	55440	10	SELF TAP SCREW 1/4-20 X 1/2
23	465	1	H.H.C.S. 5/16-18 X 7/8
24	480	1	LOCKWASHER 5/16 SPLIT
25	458	1	HEX NUT 5/16-18

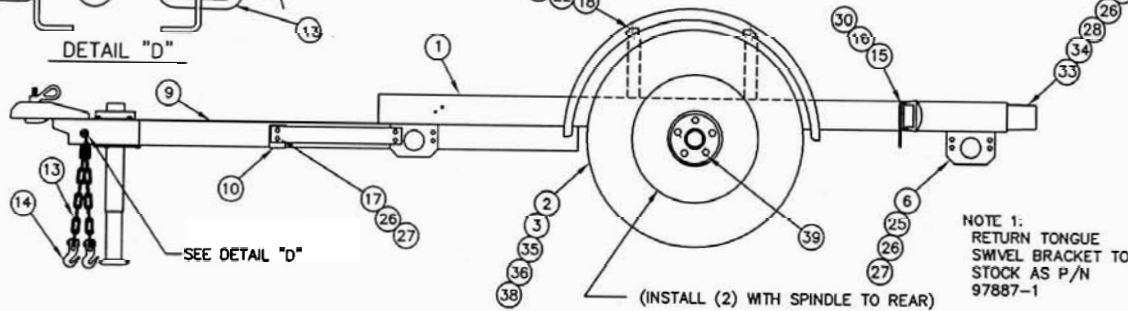
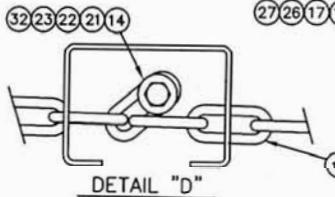
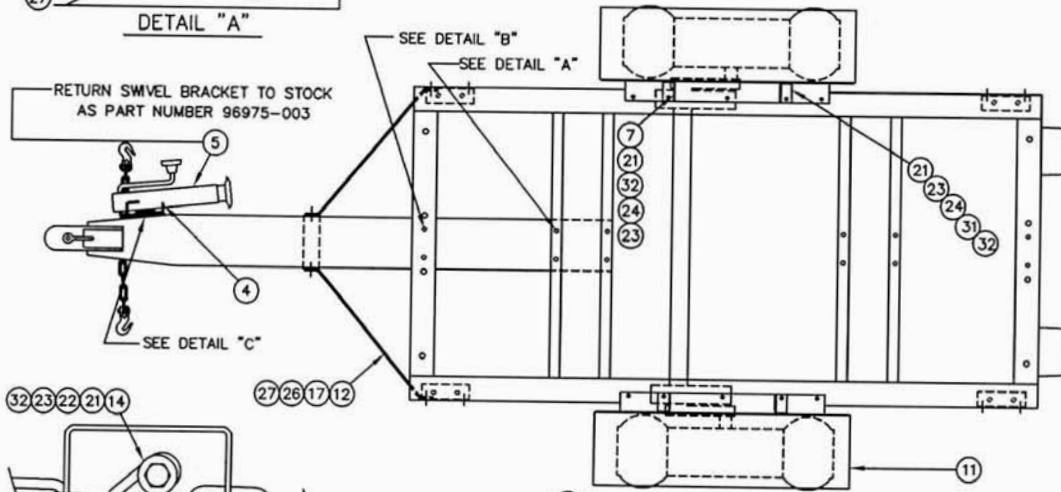
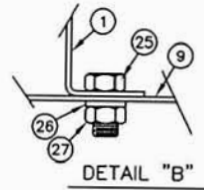
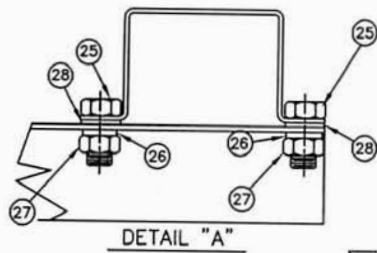
ADDED 99239-004
 ADDED 99239-003, ITEM 3 TO TABLE
 ADDED -2
 -0(1) WAS 99239, -1(1) WAS 99239-1

UNLESS OTHERWISE SPECIFIED		MACHINED SURFACE TEXTURE		ALL DIMENSIONS GIVEN IN INCHES			
FRACTIONS ±		ANGULAR ± 1.5°		WORK TO DIMENSIONS			
1. PLACE DEC. ± .1				- DO NOT SCALE -			
2. PLACE DEC. ± .015							
3. PLACE DEC. ± .005							
THIS DRAWING CONTAINS PROPRIETARY INFORMATION BELONGING TO WINCO. UNAUTHORIZED USE IS PROHIBITED.	DRAWN BY	DATE	CHK'D BY	DATE	APP'D BY	DATE	SCALE
	C.M.	5-6-94	S.V.	7-7-94	S.V.	7-7-94	1=1
	MATERIAL:						
	FINISH	TITLE		ENGINE / GENERATOR UNIT ASSEMBLY			
ASS'Y	MODEL		SEE TABLE				
						PART NO. A-99239	

B-99181

TABLE						
PART NO.	ITEM (2)	QTY. (8)	ITEM (9)	QTY. (20)	QTY. (37)	REF.
B-99181-3	A-99099-1	---	B-99564	---	---	REINFORCED TONGUE
B-99181-4	A-99099-3	1	A-99348	1	1	HYD. BRAKE
B-99181-5						PURCHASED

REVISION RECORD				
ISSUE	E.C.O. NO.	DESCRIPTION	DATE	BY APPR.
3		ADDED LUGNUTS	11-22-02	E.F. SV
4		ADDED -005	6-13-05	MTH MTH



40				
39	252003060	10	LUGNUTS	
38	95468	4	ELASTIC STOPNUT 5/8-11	
37	A-95776	TABLE	LUNETTE EYE (SHIP LOOSE)	
36	515	4	FLAT WASHER 5/8	
35	A-91083-1	4	H.H.C.S. 5/8-11 X 1 1/2	
34	A-57580-7	4	H.H.C.S. 1/2-13 X 3	
33	B-98858	2	BUMPER	
32	526	11	5/16 STD. FLAT WASHER	
31	A-99150-1	2	GUSSET	
30	A-55440	4	1/4 X .5 SELF TAPPING SCREW	
29	A-81589	3 OZ.	LOCKING COMPOUND	
28	21867	20	FLAT WASHER 1/2	
27	1744	26	HEX NUT 1/2-13	
26	636	26	L.W. 1/2	
25	48178	14	H.H.C.S. 1/2-13 X 1	
24	481	11	L.W. 3/8	
23	92914	11	HEX NUT 3/8-16	
22	480	8	L.W. 5/16	
21	91658-2	11	H.H.C.S. 3/8-16 X 1 1/4	
20	A-95821	TABLE	BRAKE LINE KIT	
19	458	8	HEX NUT 5/16-18	
18	467	4	H.H.C.S. 5/16-18 X 3/4	
17	1516	8	H.H.C.S. 1/2-13 X 1 1/4	
16	A-99158	2	TRAILER LIGHT SUPPORT	
15	A-98837	1	TRAILER LIGHT KIT	
14	A-92061	2	CHAIN HOOK, PIN AND KEY	
13	B-92043-5	1	SAFETY CHAIN	
12	B-99154	2	TONGUE BRACE	
11	A-99538-1	2	FENDER WELDMENT	
10				
9	SEE TABLE	1	TONGUE AND HITCH WELDMENT	
8	A-95752	TABLE	HOSE, HYD. BRAKE	
7	A-99150	2	GUSSET	
6	A-99149	4	HOLD DOWN	
5	A-97887	1	JACK, SIDEWINDER	
4				
3	A-98726-1	2	TIRE AND RIM ASSEMBLY	
2	SEE TABLE	1	AXLE ASSEMBLY	
1	C-99176	1	BASE WELDMENT	

ITEM	PART NO	QUAN.	DESCRIPTION
UNLESS OTHERWISE SPECIFIED			
FRACTIONS ±			MACHINED SURFACE TEXTURE
1. PLACE DEC. ± .1		ANGULAR.	ALL DIMENSIONS GIVEN IN INCHES
2. PLACE DEC. ± .03		± 1.5°	WORK TO DIMENSIONS
3. PLACE DEC. ± .005			- DO NOT SCALE -

THIS DRAWING CONTAINS PROPRIETARY INFORMATION BELONGING TO WINCO, UNAUTHORIZED USE IS PROHIBITED.	DRAWN BY	DATE	CHKD BY	DATE	APP'D BY	DATE	SCALE
	RAB	3-5-97					1=15

FINISH	ASSY	MODEL	TITLE	PART NO.
X	A-99226	MDS25	TRAILER ASS'Y	B-99181-XXX
				SHEET 2 OF 2

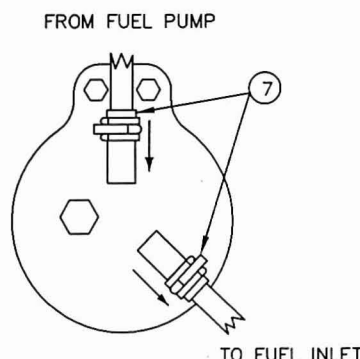
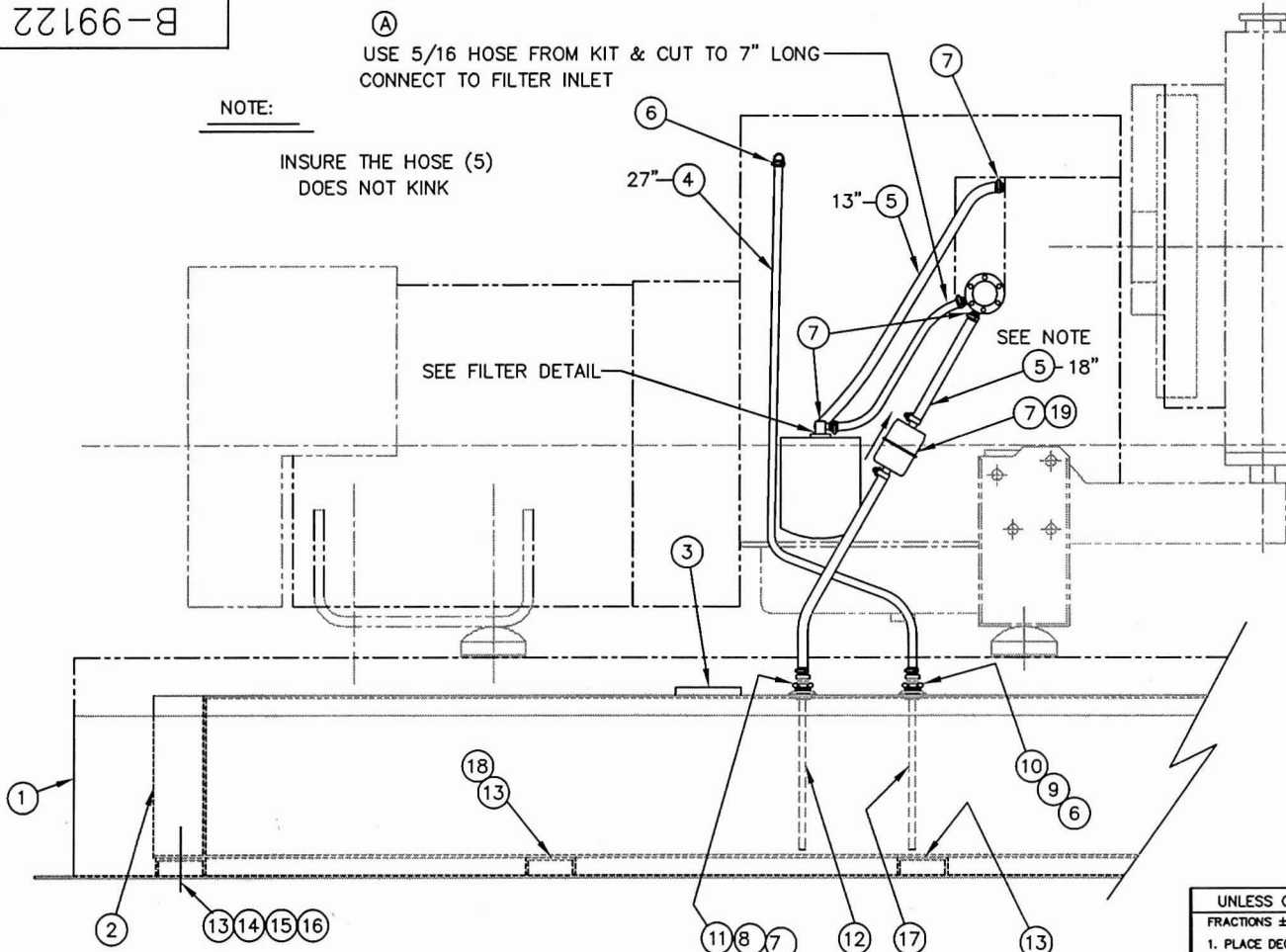


B-99122

(A) USE 5/16 HOSE FROM KIT & CUT TO 7" LONG
CONNECT TO FILTER INLET

NOTE:

INSURE THE HOSE (5)
DOES NOT KINK



FILTER DETAIL
(NOT TO SCALE)

REVISION RECORD					
ISSUE	E.C.O. NO.	DESCRIPTION	DATE	BY	APPR.
1		ORIGINAL			
2		(5) WAS 42", ADDED NOTE AT (A) WAS "C" SIZE	6-30-94	D.W.	S.V.
3		(4) & (5) QTY & ROUTING CHANGED	6-30-94	D.W.	
4		NO C/N ADDED FILTER DETAIL	1/31/95	J.S.	J.S.
5		ADDED (18)	5-3-95	C.M.	S.V.
6	357-95	ADDED (19) (7) WAS QTY. 4	10-18-95	C.M.	R.H.
7		(18) WAS QTY 1	2-13-96	D.W.	

UNLESS OTHERWISE SPECIFIED		MACHINED SURFACE TEXTURE		ALL DIMENSIONS GIVEN IN INCHES WORK TO DIMENSIONS - DO NOT SCALE -													
FRACTIONS ±		ANGULAR ± 1.5°		DRAWN BY		DATE		CHK'D BY		DATE		APP'D BY		DATE		SCALE	
1. PLACE DEC. ± .1				D.M.W.		6-30-94						R.H.		10-20-95		1=6	
2. PLACE DEC. ± .03				MATERIAL:													
3. PLACE DEC. ± .005				FINISH X													
				ASS'Y X													
				MODEL MDS25													
THIS DRAWING CONTAINS PROPRIETARY INFORMATION BELONGING TO WINCO, UNAUTHORIZED USE IS PROHIBITED.				TITLE FUEL SYSTEM													
				PART NO. B-99122													
				WINCO INCORPORATED													

ITEM	PART NO	QUAN.	DESCRIPTION	ITEM	PART NO	QUAN.	DESCRIPTION
10	A-99229	1	BUSHING, REDUCER MOD.	19	A-98269	1	FUEL FILTER, IN LINE
9	A-94319-3	1	HOSE, FIT. 1/8 NPT-1/4 I.D. HOSE	18	A-99440	8 FT	DOUBLE COATED TAPE 96"
8	A-94319-2	1	HOSE, FIT. 1/4 NPT-3/8 I.D. HOSE	17	A-99276	1	TUBE, FUEL TANK (1/4-NPT)
7	81018-8	6	CLAMP	16	1744	8	HEX NUT 1/2-13
6	81018-9	2	CLAMP	15	636	8	LOCKWASHER 1/2 SPLIT
5	55505	2.59FT	HOSE 3/8 I.D.	14	21867	8	FLAT WASHER 1/2
4	40078	2.25FT	HOSE 1/4 I.D.	13	A-93691	96"	STRAP, NYLON
3	A-99123	1	FUEL GAUGE	12	A-16044-1	1	TUBE, FUEL TANK (1/8-NPT)
2	B-99120	1	TANK WELDMENT	11	A-99229-1	1	BUSHING, REDUCER MOD.
1	B-99119	1	FUEL BASE WELDMENT				


A-98948-10

KUBOTA TV CS INDIRECT INJECTION DIESEL ENGINE, LIQUID COOLED, MODEL V2203BG-2
 RATED AT 37 HP @ 1800 RPM, NET INTERMITTENT WITH THE FOLLOWING ACCESSORIES:

REAR INLET INTAKE MANIFOLD (REF. KUBOTA #16691-11761)
 UNIT MOUNTED, HIGH AMBIENT RADIATOR WITH BLOWER FAN AND
 STANDARD GUARDS (REF. KUBOTA A16 GROUP)
 LUBE OIL FILTER - FULL FLOW, SPIN-ON TYPE
 FUEL PUMP
 GOVERNOR REGULATION WITHIN 5%
 STARTER
 ALTERNATOR - 12 VOLT, 420 WATT
 FLYWHEEL HOUSING SAE 4, FLYWHEEL - 7 1/2"
 PRIMED AND PAINTED
 OWNER LITERATURE
 FUEL FILTER KIT - INSTALLED
 EXHAUST MANIFOLD GASKET
 AIR CLEANER KIT - SHIP LOOSE
 GLOW PLUG INDICATOR LAMP, #15403-64490 - SHIP LOOSE
 ALTERNATOR/VR CONNECTORS & TERMINALS - SHIP LOOSE
 ALTERNATOR VOLT REG. - SHIP LOOSE

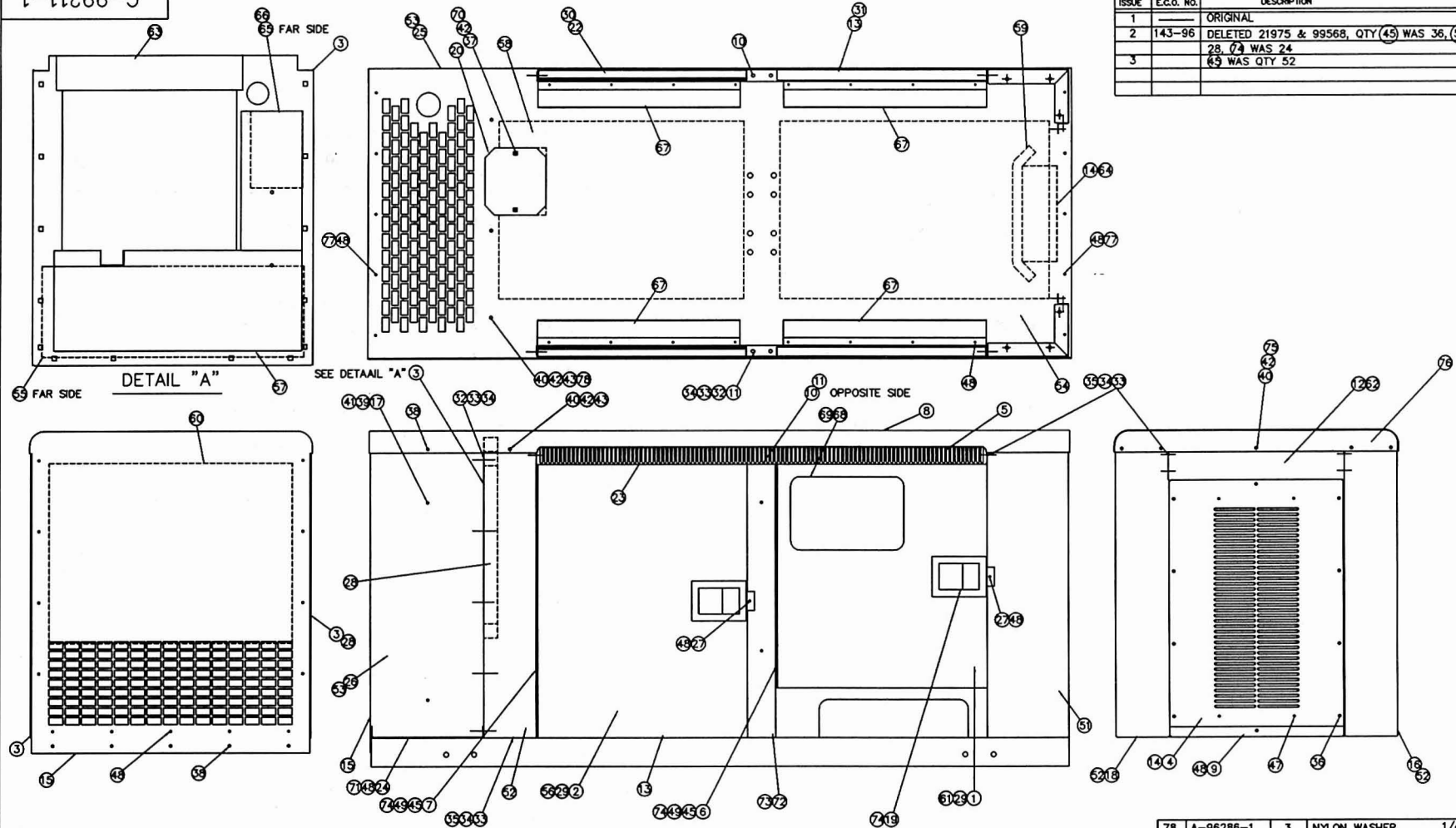
THE FOLLOWING PARTS ARE TO BE SEPERATED AT RECEIVING AND STOCKED AS FOLLOWS:

PART NO.	ITEM
98948-10	ENGINE
98948-2	INDICATOR LAMP
98948-3	OPERATOR'S MANUAL
98948-4	AIR CLEANER KIT
98948-5	ALTERNATOR VOLT. REG.
98948-6	CONNECTORS, ALT - VR

UNLESS OTHERWISE SPECIFIED		MACHINED SURFACE TEXTURE		ALL DIMENSIONS GIVEN IN INCHES			
FRACTIONS ±		ANGULAR		WORK TO DIMENSIONS			
1. PLACE DEC. ± .1		± 1.5°		- DO NOT SCALE -			
2. PLACE DEC. ± .015							
3. PLACE DEC. ± .005							
THIS DRAWING CONTAINS PROPRIETARY INFORMATION BELONGING TO WINCO. UNAUTHORIZED USE IS PROHIBITED.	DRAWN BY	DATE	CH'KD BY	DATE	APP'D BY	DATE	SCALE
	C.M.	5-5-94					1=1
	MATERIAL:						
	FINISH	TITLE					
	ASS'Y	ENGINE ORDERING SPECIFICATION					
MODEL	MDS25						
						PART NO.	
						A-98948-10	

C-99211-1

REVISION RECORD					
ISSUE	E.C.O. NO.	DESCRIPTION	DATE	BY	APPR.
1		ORIGINAL			
2	143-96	DELETED 21975 & 99568, QTY (45) WAS 36, (50) WAS 28, (74) WAS 24	4-29-96	D.W	RH
3		(45) WAS QTY 52	10-8-96	D.W	



23	A-99180	1	DOOR JAMB, TOP	46				69	A-95998	4	FT	DOUBLE FACE ACRYLIC TAPE	
22	A-99179-1	1	DOOR JAMB, BOTTOM	45	A-92926-1	36	SCREW	#10-24 X 1/2	68	A-98448-2	1	WINDOW PANEL	
21	A-99260	1	FOAM (MAT'L 16102 QTY 49.5 SQ.FT)	44				67	B-99260-17	REF.	FOAM		
20	A-62026-2	1	COVER	43	439	5	CAP SCREW	1/4-20 X 1	66	B-99260-16	REF.	FOAM	
19	A-99269	4	LATCH	42	479	26	LOCKWASHER	1/4	65	B-99260-15	REF.	FOAM	
18	B-99167	1	POST, REAR CORNER L.H.	41	21253	8	RHMS	1/4-20 X 3/4	64	B-99260-14	REF.	FOAM	
17	61660	8	RUBBER FOOT	40	638	14	HEX NUT	1/4-20	63	B-99260-13	REF.	FOAM	
16	B-99167-1	1	POST, REAR CORNER R.H.	39	47517	8	HEX LOCK NUT	1/4-20	62	B-99260-12	REF.	FOAM	
15	B-99144-2	1	FRONT, AIR CHAMBER	38	A-55440	11	SELP TAP	1/4-20	61	B-99260-11	REF.	FOAM	
14	A-99189-1	1	BACKING PLATE, AIR INLET	37	A-92495	12	NUT RETAINER	1/4-20	60	B-99260-10	REF.	FOAM	
13	A-99179	2	DOOR JAMB, BOTTOM	36	A-94375-3	10	SCREW	1/4-20	59	B-99260-9	REF.	FOAM	
12	A-99169-1	1	REAR SILL, TOP	35	458	24	HEX NUT	5/16-18	58	B-99260-8	REF.	FOAM	
11	A-99171-1	1	SIDE POST, L.H.	34	465	43	HHCS	5/16-18 X 7/8	57	B-99260-7	REF.	FOAM	
10	A-99171	1	SIDE POST, R.H.	33	480	43	LOCKWASHER	5/16	56	B-99260-6	REF.	FOAM	
9	A-99205	1	REAR DOOR JAMB, BOTTOM	32	A-92419	21	NUT RETAINER	5/16-18	55	B-99260-5	REF.	FOAM	
8	C-99208-1	1	ROOF	31	A-99180-2	1	DOOR JAMB, TOP		54	B-99260-4	REF.	FOAM	
7	A-99240	3	HINGE	30	A-99180-1	1	DOOR JAMB, TOP		53	B-99260-3	REF.	FOAM	
6	A-99240-1	1	HINGE	29	A-62912	39FT	STRIP (DOOR GASKET)		52	B-99260-2	REF.	FOAM	
5	B-99172	2	SILL, TOP	28	A-92421	7FT	FOAM STRIP		51	B-99260-1	REF.	FOAM	
4	A-99170-1	1	REAR PANEL	27	A-99243	4	STRIKER PLATE		50	456	12	HEX NUT	#10-24
3	A-99249	1	HOUSING, FRONT WELDM'T	26	A-99142	1	SIDE PANEL, AIR CHAMBER		49	598	24	LOCKWASHER	#10
2	B-99207	3	SIDE DOOR	25	A-99142-1	1	SIDE PANEL, AIR CHAMBER		48	A-21698	61	SCREW SELF TAP	#10
1	B-99207-1	1	SIDE DOOR	24	A-99250	1	FLOOR AIR CHAMBER WELDM'T		47	A-21698-1	4	SCREW SELF TAP	#10

78	A-96286-1	3	NYLON WASHER	1/4
77	A-96286-2	10	NYLON WASHER	#10
76	A-99408	1	END, ROOF	
75	478	9	HHCS	
74	5315	40	ELASTIC STOP NUT	10-24
73	92419	4	NUT RETAINER	
72	526	4	FL. WASHER	5/16
71	62173-1	2	SCREW SELF TAP	5/16-18 x 1/2
70	463	2	SCREW SELF TAP	1/4-20 x 1/2

ITEM	PART NO	QUAN.	DESCRIPTION
UNLESS OTHERWISE SPECIFIED			
FRACTIONS ±		ANGULAR	MACHINED SURFACE TEXTURE
1. PLACE DEC. ± .1		± 1.5°	
2. PLACE DEC. ± .03			
3. PLACE DEC. ± .005			

ALL DIMENSIONS GIVEN IN INCHES
WORK TO DIMENSIONS
- DO NOT SCALE -

DRAWN BY	DATE	CHKD BY	DATE	APP'D BY	DATE	SCALE
D.M.W.	10-5-95			R.H.	4-29-96	1=8

THIS DRAWING CONTAINS PROPRIETARY INFORMATION BELONGING TO WNGCO. UNAUTHORIZED USE IS PROHIBITED.

MATERIAL: _____

FINISH: _____ TITLE: HOUSING ASSEMBLY

ASSY: C-99226

MODEL: MDS25

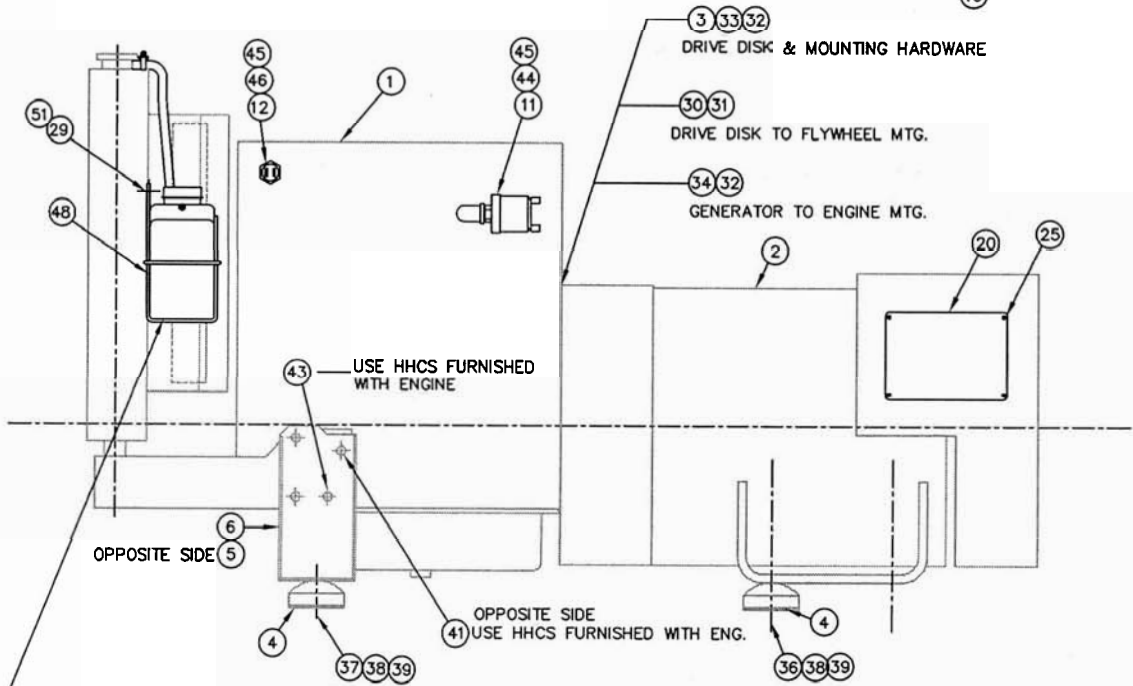
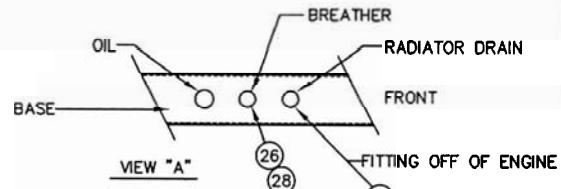
WNGCO INCORPORATED

PART NO. C-99211-1

B-99183-000

NOTES:

- 1. HAND TORQUE:
ITEM (30) = 20 FT-LBS
ITEM (33) & (34) = 30 FT-LBS



COOLANT RECOVERY SYSTEM IS ACCOUNTED FOR HERE BUT CAN NOT BE MOUNTED UNTIL HOUSING FRONT WELDMENT IS INSTALLED

45	91257-000	A/R	PERMATEX
44	A-92584-000	1	STREET ELBOW 1/8 NPT - 45°
43	A-93341-012	7	SPLIT LOCK WASHER M12
42	A-23917-000	1	RUBBER GROMMET
41	A-93341-010	1	SPLIT LOCK WASHER M10
40	A-53244-003	1	PIPE, NIPPLE 3/8 X 2
39	1744-000	4	1/2-13 HEX NUT
38	636-000	4	1/2 SPLIT LOCK WASHER
37	A-57580-000	2	1/2-13 X 1-1/2 HEX HD. BOLT
36	A-57580-003	2	1/2-13 X 2 HEX HD. BOLT
35	A-95231-006	1	GROUND STRAP ASSEMBLY
34	A-96000-003	12	3/8-16 X 1.25 HEX HD. BOLT
33	A-96000-002	6	3/8-16 X 1.00 HEX HD. BOLT
32	481-001	18	3/8 SPLIT LOCK WASHER

51	439-000	2	HHCS 1/4-20 X 1
50			
49			
48	B-94338-001	1	COOLANT RECOVERY SYSTEM
47			
46	A-56372-000	2	HEX REDUCING BUSHING 1/2 X 3/8

REVISION RECORD					
ISSUE	E.C.O. NO.	DESCRIPTION	DATE	BY	APPR.
17	096-04	ITEM (48) WAS A-94338-000, ITEM (29) WAS 638. DELETED 20" OF HOSE 94340-000, 2 CLAMPS A-81018-009 AND 2 LOCKWASHER 479-000, AND MOUNTING BRACKET, A-94339-000	6-18-04	E.F.	TAP
18	123-04	(65) WAS 95231-000	8-30-04	M.H.	TAP
19		(65) WAS 95231-001	11-22-04	M.H.	MTH

31	480-001	8	3/8 SPLIT LOCK WASHER
30	A-91546-000	8	HHCS 5/16-18 X 3/4 (BLACK)
29	A-16248-000	2	1/4-20 HEX FLANGENUT
28	A-92388-002	1	BRASS HOSE FITTING
27			
26	A-62286-000	42"	HOSE, BREATHER 1/2 I.D
25	A-10809-000	4	SCREW #4 X 1/4
24	A-81018-008	1	CLAMP
23	98948-006	1	CONNECTOR
22	A-53196-000	1	PIPE, ELBOW 3/8 NPT
21	B-98372-015	1	CERTIFICATE OF ORIGIN
20	91713-000	1	NAME PLATE
19	A-94319-000	2	HOSE, FITTING 3/8 NPT
18	A-98948-003	1	OPERATOR'S MANUAL, ENGINE
17	60706-120	1	OP MAN/RPL
16	A-93690-000	23"	HOSE - 3/8
15	A-55440-000	3	SELF TAP SCREW 1/4-20 X 1/2
14			
13	C-98990-002	1	ENGINE WRING HARNESS
12	A-99265-000	1	WATER TEMPERATURE SENDER
11	A-99267-001	1	OIL PRESSURE SENDER
10	B-53220-052	1	BATTERY CABLE
9	B-53220-051	1	BATTERY CABLE
8	A-99008-001	1	F.S. MOUNTING KIT
7	B-97302-003	1	SOLENOID MODIFICATION
6	B-99107-002	1	ENGINE SUPPORT, LEFT
5	B-99107-001	1	ENGINE SUPPORT, RIGHT
4	A-98956-001	4	SHOCKMOUNT
3	C-91633-000	2	DRIVE DISK
2	92114-012	1	GENERATOR PARTS
1	A-98948-010	1	ENGINE & RAD. ASS'Y.

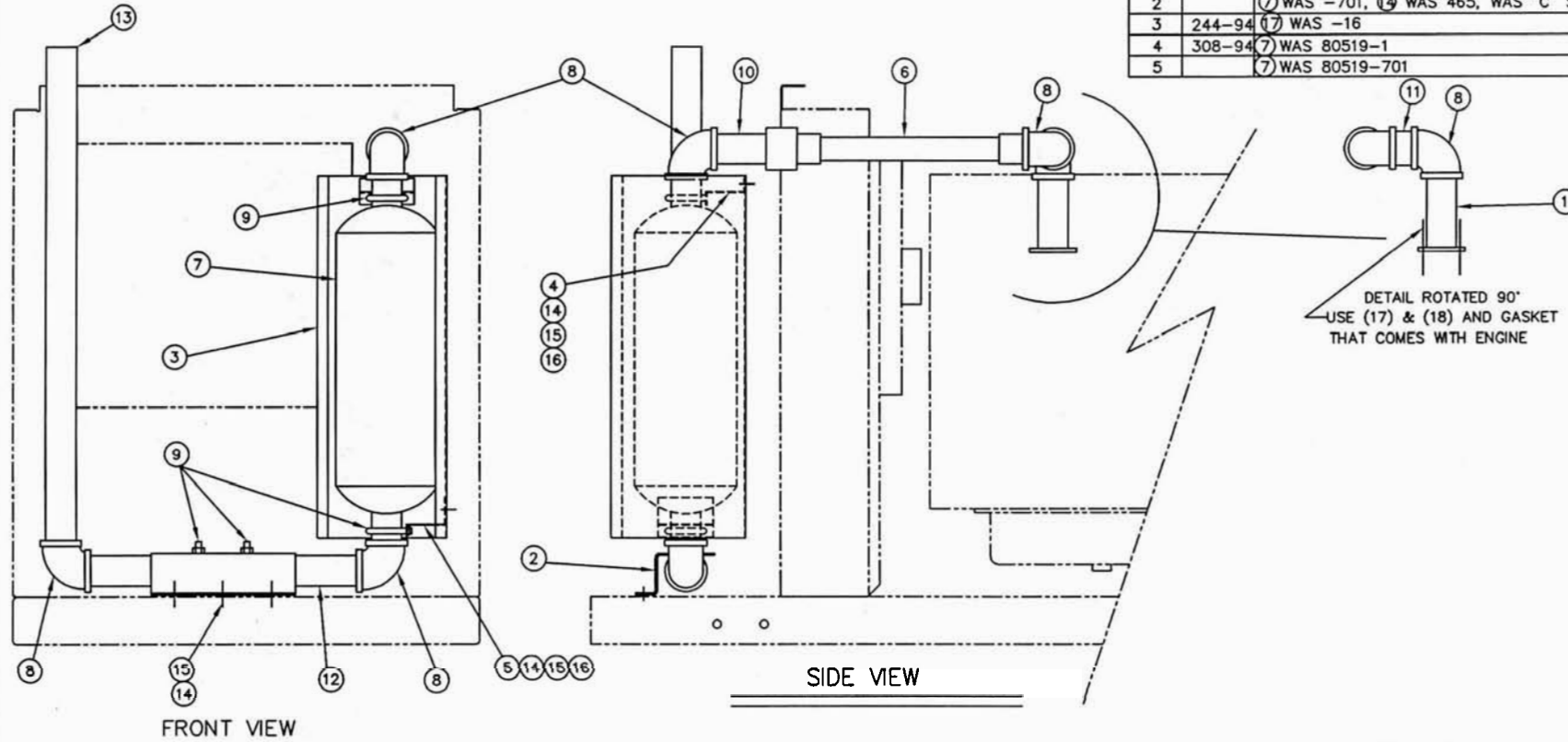
ITEM	PART NO	QUAN.	DESCRIPTION
UNLESS OTHERWISE SPECIFIED			
FRACTIONS ±		ANGULAR	MACHINED SURFACE TEXTURE
1. PLACE DEC. ±	.1	± 1.5°	
2. PLACE DEC. ±	.03		
3. PLACE DEC. ±	.005		
ALL DIMENSIONS GIVEN IN INCHES WORK TO DIMENSIONS - DO NOT SCALE -			
DRAWN BY	DATE	CHK'D BY	DATE
D.M.W.	7-1-94		
APP'D BY	DATE	SCALE	
R.H.	7-18-94	1=7	
MATERIAL:			
FINISH	X	TITLE	ENGINE GENERATOR SET INSTALLATION
ASS'Y	A-99239-000		
MODEL	MDS25		
PART NO.			B-99183-000

THIS DRAWING CONTAINS PROPRIETARY INFORMATION BELONGING TO WINGCO. UNAUTHORIZED USE IS PROHIBITED.



B-99253

REVISION RECORD					
ISSUE	E.C.O. NO.	DESCRIPTION	DATE	BY	APPR.
1		ORIGINAL			
2		(7) WAS -701, (14) WAS 465, WAS "C" SIZE	7-1-94	D.W.	S.V.
3	244-94	(7) WAS -16	8-19-94	D.W.	S.V.
4	308-94	(7) WAS 80519-1	9-29-94	C.M.	S.V.
5		(7) WAS 80519-701	2-30-96	D.W.	

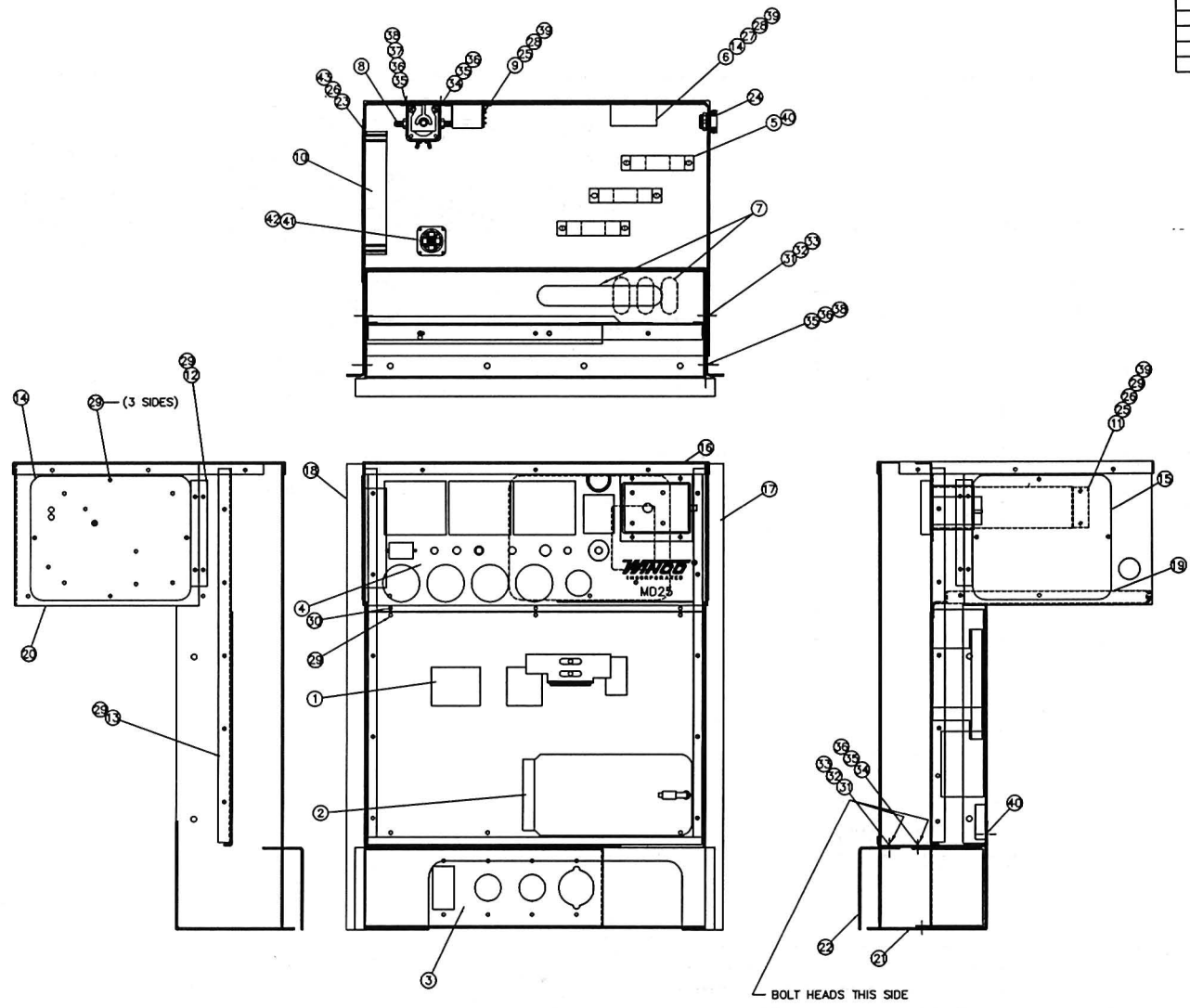


12	A-99273	1	EXHAUST PIPE					
11	A-58105	1	PIPE NIPPLE 1 1/2 NPT X 1 3/4					
10	A-58105-5	1	PIPE NIPPLE 1 1/2 NPT X 4					
9	A-93489-3	4	MUFFLER CLAMP					
8	A-92042-1	5	ELBOW 90° 1 1/2 NPT					
7	B-80519-1	1	MUFFLER					
6	A-16016	1	FLEX EXHAUST WELDMENT	18	A-97436-8	4	LOCKWASHER M8 SPLIT	
5	A-99244-1	1	SUPPORT, MUFFLER	17	A-96002-25	4	H.H.C.S. M8 X 25	
4	A-99244	1	SUPPORT, MUFFLER	16	458	4	HEX NUT 5/16-18	
3	A-99245	1	HEAT DEFLECTOR	15	480	7	LOCKWASHER 5/16 SPLIT	
2	A-99234	1	EXHAUST SUPPORT	14	467	7	H.H.C.S. 5/16-18 X 3/4	
1	A-99254	1	PIPE WELDMENT	13	A-99274	1	EXHAUST PIPE	
ITEM	PART NO	QUAN.	DESCRIPTION	ITEM	PART NO	QUAN.	DESCRIPTION	

UNLESS OTHERWISE SPECIFIED		MACHINED SURFACE TEXTURE		ALL DIMENSIONS GIVEN IN INCHES			
FRACTIONS ±		ANGULAR ±1.5°		WORK TO DIMENSIONS			
1. PLACE DEC. ± .1				- DO NOT SCALE -			
2. PLACE DEC. ± .03							
3. PLACE DEC. ± .005							
THIS DRAWING CONTAINS PROPRIETARY INFORMATION BELONGING TO WINCO, UNAUTHORIZED USE IS PROHIBITED.	DRAWN BY	DATE	CHK'D BY	DATE	APP'D BY	DATE	SCALE
	D.M.W.	7-1-94					1=7
	MATERIAL:						
	FINISH	X	TITLE				
ASSY	X	EXHAUST ASSEMBLY					
MODEL	MDS25	PART NO.					
						B-99253	

200-99266-C

REVISION RECORD					
ISSUE	E.C.O. NO.	DESCRIPTION	DATE	BY	APPR.
1		ORIGINAL			
2		DELETED 21698, 30 WAS QTY 14	6-16-97	DSW	
3		(6) WAS -4, (7) WAS QTY 2, (8) & (9) WERE QTY 6	11/5/02	J.L.	SV
4		(7) WAS 23867-000	08/16/04	TAP	TAP



48	B-99247	REF	D.C. SCHEMATIC
45	C-99248	REF	A.C. SCHEMATIC
44	C-99275	1	WIRING DIAGRAM
43	24737	8	SCREW #10-32 X 1/2
42	24988	2	RHMS #8-32 X 5/8
41	51802	2	ELASTIC STOPNUT #8-32
40	A-55440	10	SELF TAP 1/4
39	21976	8	LOCKWASHER #8
38	476	9	HHCS 1/4-20 X 5/8
37	4516	1	EXT LOCKWASHER 1/4
36	479	12	LOCKWASHER 1/4
35	638	12	HEX NUT 1/4-20
34	463	4	HHCS 1/4-20 X 1/2
33	480	6	LOCKWASHER 5/16
32	458	6	HEX NUT 5/16-18
31	467	6	HHCS 5/16-18 X 3/4
30	A-21698-1	68	SELF TAP #10 (BLK)
29			
28	5113	8	HEXNUT #8-32
27	23599-000	4	RHMS #8-32 X 1
26	484	8	LOCKWASHER #10
25	6402	4	BHMS #8-32 X 3/8
24	A-93073-2	1	ROMEX CONNECTOR
23	B-91454-3	4	SPACERS
22	B-99241	1	BOTTOM, CIRCUIT BREAKER MOUNTING
21	A-99194	1	CONTROL, BOTTOM
20	B-99238	1	CONTROL CABINET, REAR
19	B-99190	1	CONTROL FLOOR, UPPER
18	B-99185-1	1	CONTROL CABINET SIDE, RIGHT
17	B-99185	1	CONTROL CABINET SIDE, LEFT
16	B-99184	1	TOP, CONTROL CABINET
15	B-99198-1	1	COVER
14	B-99198	2	COVER
13	A-99197	2	SUPPORT, PANEL
12	A-99242	2	SPLICE
11	A-99196	1	SUPPORT, SELECTOR SWITCH
10	A-72190-13	1	ENGINE CONTROL
9	B-59944-1	1	RELAY
8	A-80980	1	SOLENOID
7	A-99280	4.00 FT	CONTINUOUS GROMMET
6	B-95690-005	1	VR PREMIRE
5	A-71234-3	3	CURRENT TRANSFORMER 100/5
4	B-99246	1	SUB-ASSY CONTROL PANEL
3	B-99258	1	SUB-ASSY, RECEPTACLE
2	B-99259-2	1	SUB-ASSY, CIRCUIT BREAKER COVER
1	B-99257	1	SUB-ASSY, CIRCUIT BREAKER

ITEM	PART NO	QUAN.	DESCRIPTION
UNLESS OTHERWISE SPECIFIED			
FRACTIONS #			MACHINED SURFACE
1. PLACE DEC. #	.1	ANGULAR	TEXTURE
2. PLACE DEC. #	.03	± 1.5°	
3. PLACE DEC. #	.005		
ALL DIMENSIONS GIVEN IN INCHES WORK TO DIMENSIONS - DO NOT SCALE -			
DRAWN BY D.M.W.		DATE 10-3-96	CHD BY DATE APPD BY RH DATE 6/19/97 SCALE 1=5
THIS DRAWING CONTAINS PROPRIETARY INFORMATION BELONGING TO WINCO. UNAUTHORIZED USE IS PROHIBITED.			
MATERIAL:			ENGINE CONTROL
FRESH	TITLE		
ASSY	99239-2		
MODEL	MDS25/B		
WINCO INCORPORATED			PART NO. C-99256-002

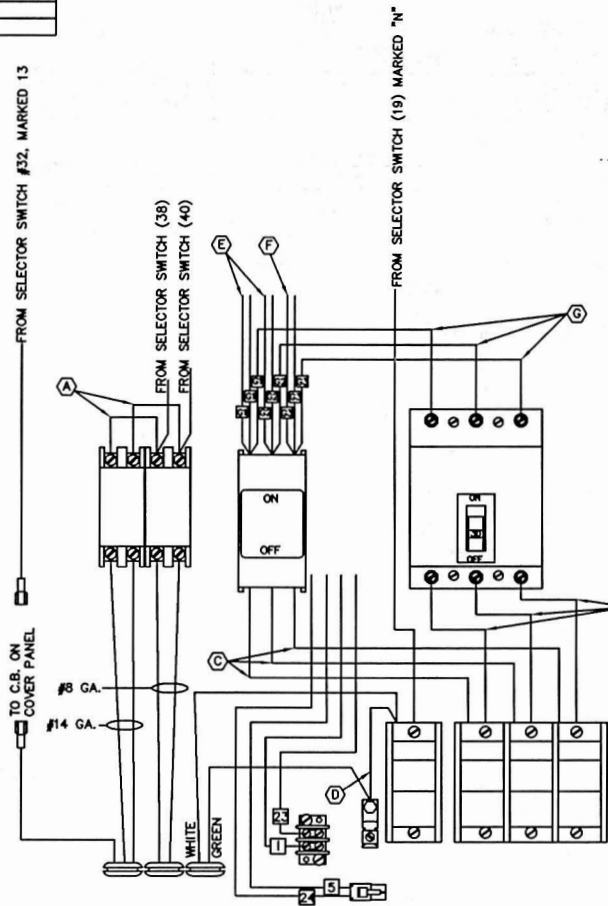
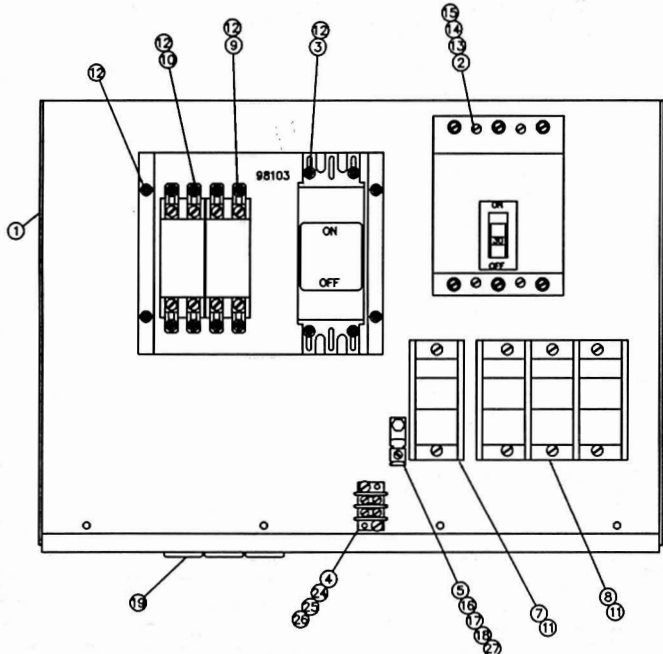
C-99257

LEAD WIRE TABLE

ITEM ①	LEAD WIRE			"A" END		"B" END		REMARKS
	PART NO.	LENGTH	QTY.	TERM. LUG	STRIP	TERM. LUG	STRIP	
A	A-91779	5.5"	2	-----	1/2	-----	1/2	
B	A-91779	5.5"	3	-----	3/4	-----	3/4	
C	A-91780	11.5"	3	-----	3/4	-----	3/4	
D	A-91780	7"	1	21437	3/8	-----	3/4	
E	A-91780	24"	2	-----	3/4	21437	3/8	
F	A-91779	24"	1	-----	3/4	4155	3/8	
G	A-91779	10"	3	-----	1/2	-----	1/2	

REVISION RECORD

ISSUE	E.C.G. NO.	DESCRIPTION	DATE	BY	APPR.
1	---	ORIGINAL	---	---	---
2	---	ADDED (24) THRU (28) (8) WAS 424, (16) & (17) QTY WAS 1, (11) QTY WAS 10, (21) WAS QTY 4.59, (20) QTY WAS 7.55	6-22-94	D.W.	R.H.
3	---	DELETED 21206, QTY. 2; (28) WAS QTY. 1	1-16-95	C.M.	



28	21437	3	LUG
27	4516	1	WASHER
26	394	2	NUT
25	22989	2	WASHER
24	7792	2	SCREW
23			
22	4155	1	LUG
21	A-91779	6.80FT	LEADWIRE
20	A-91780	7.46FT	LEADWIRE
19	A-56927	3	GROMMET
18	439	1	HCSS 1/4-20 X 1
17	479	2	LOCKWASHER 1/4
16	638	2	HEX NUT 1/4 X 20
15	5113	4	HEX NUT #8-32
14	6376	4	LOCKWASHER #8
13	95832	4	RHMS #8-32 X 3 1/4
12	A-21698	16	BHMS
11	46796	8	PHSMS
10	B-57030-1	1	CIRCUIT BREAKER 20 AMPS
9	B-57030	1	CIRCUIT BREAKER 50 AMPS
8	B-97753-5	1	TERMINAL BLOCK 3-POLE
7	B-97753-4	1	TERMINAL BLOCK 1-POLE
6	B-98103-1	1	STANDOFF
5	A-48042	1	GROUND LUG
4	A-27403-1	1	TERMINAL STRIP
3	B-82584-2	1	CIRCUIT BREAKER, 3 POLE-240 V.
2	81097-18	1	CIRCUIT BREAKER
1	B-99193	1	MOUNTING PLATE, CIRCUIT BREAKER

ITEM	PART NO	QUAN.	DESCRIPTION
UNLESS OTHERWISE SPECIFIED			
FRACTIONS & ---		MACHINED SURFACE TEXTURE	
1. PLACE DEC. & .1		ANGULAR	
2. PLACE DEC. & .03		± 1.5°	
3. PLACE DEC. & .005			
ALL DIMENSIONS GIVEN IN INCHES WORK TO DIMENSIONS - DO NOT SCALE -			
DRAWN BY	DATE	CHKD BY	DATE
D.M.W.	4-14-94	R.H.	
APPD BY	DATE	SCALE	
R.H.	6/24/94	1=3	
THIS DRAWING CONTAINS PROPRIETARY INFORMATION BELONGING TO WINCO. UNAUTHORIZED USE IS PROHIBITED.			
MATERIAL:			TITLE
FINISH: ---			CIRCUIT BREAKER ASS'Y
ASSY: C-99256			
MODEL: MDS25			
WINCO INCORPORATED			PART NO. C-99257

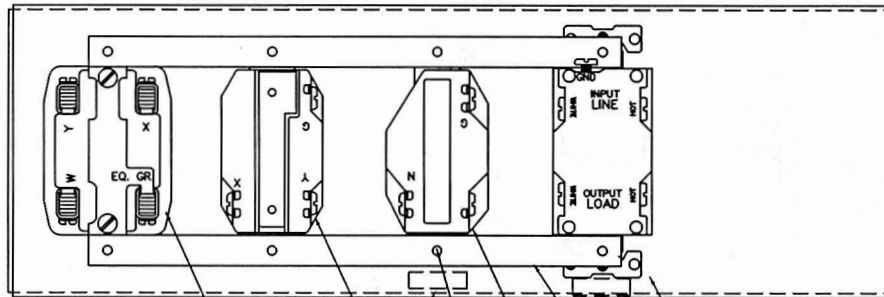
B-99258-000

LEAD WIRE TABLE

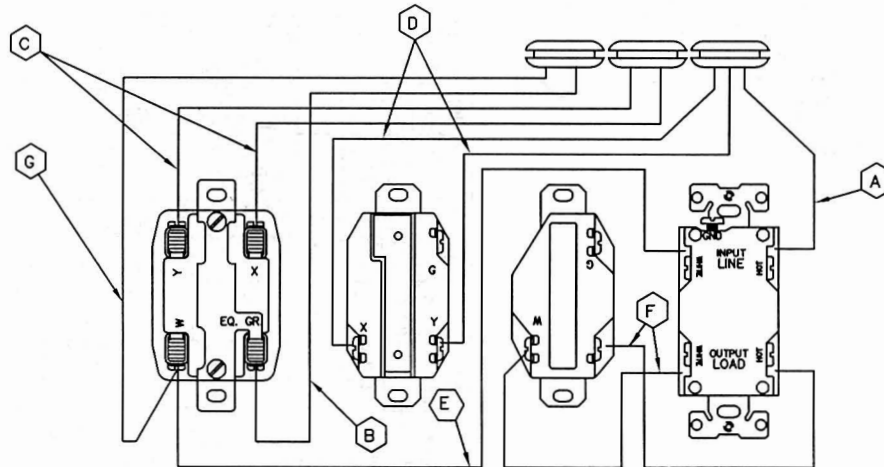
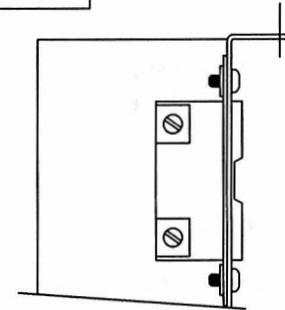
ITEM ④	LEAD WIRE			"A" END		"B" END		REMARKS
	PART NO.	LENGTH	QTY.	TERM. LUG	STRIP	TERM. LUG	STRIP	
A	A-91815-000	19	1	-----	5/8	B-48602-003	1/4	
B	A-64638-000	18	1	-----	3/4	4155-000	1/4	
C	A-91780-000	19	2	-----	3/4	-----	3/4	
D	A-91815-000	18	2	-----	3/4	-----	3/4	
E	A-91815-000	12	1	-----	3/4	-----	5/8	
F	A-91815-000	5	2	-----	3/4	-----	5/8	
G	A-21486-000	21	1	-----	3/4	-----	3/4	

REVISION RECORD					
ISSUE	E.C.O. NO.	DESCRIPTION	DATE	BY	APPR.
1		ORIGINAL			
2		(14) WAS 1.6, (3) WAS 20531, (11) WAS -11	5-22-94	D.W.	R.H.
3	317-94	ADDED SIDE VIEW	9-29-94	D.W.	R.H.
4	294-96	ADDED NOTE 1 & LABEL LOC.	9-20-96	D.W.	GR
5	263-98	ROTATED (3) & (5) 180°	7-20-98	D.W.	SM
6	NONE	CHANGED PICTORIALY	8-25-98	D.W.	SM
7		RECEIVED 2050-2, WAS E, & F Y END & A X END WERE SWAP 3/0	10-12-98	D.W.	

NOTE 1: SAVE "GFCI PROTECTED" LABEL WHICH ACCOMPANIES ITEM ② AND APPLY ONE DECAL BELOW ITEM ③ AND ITEM ②



SEE NOTE 1



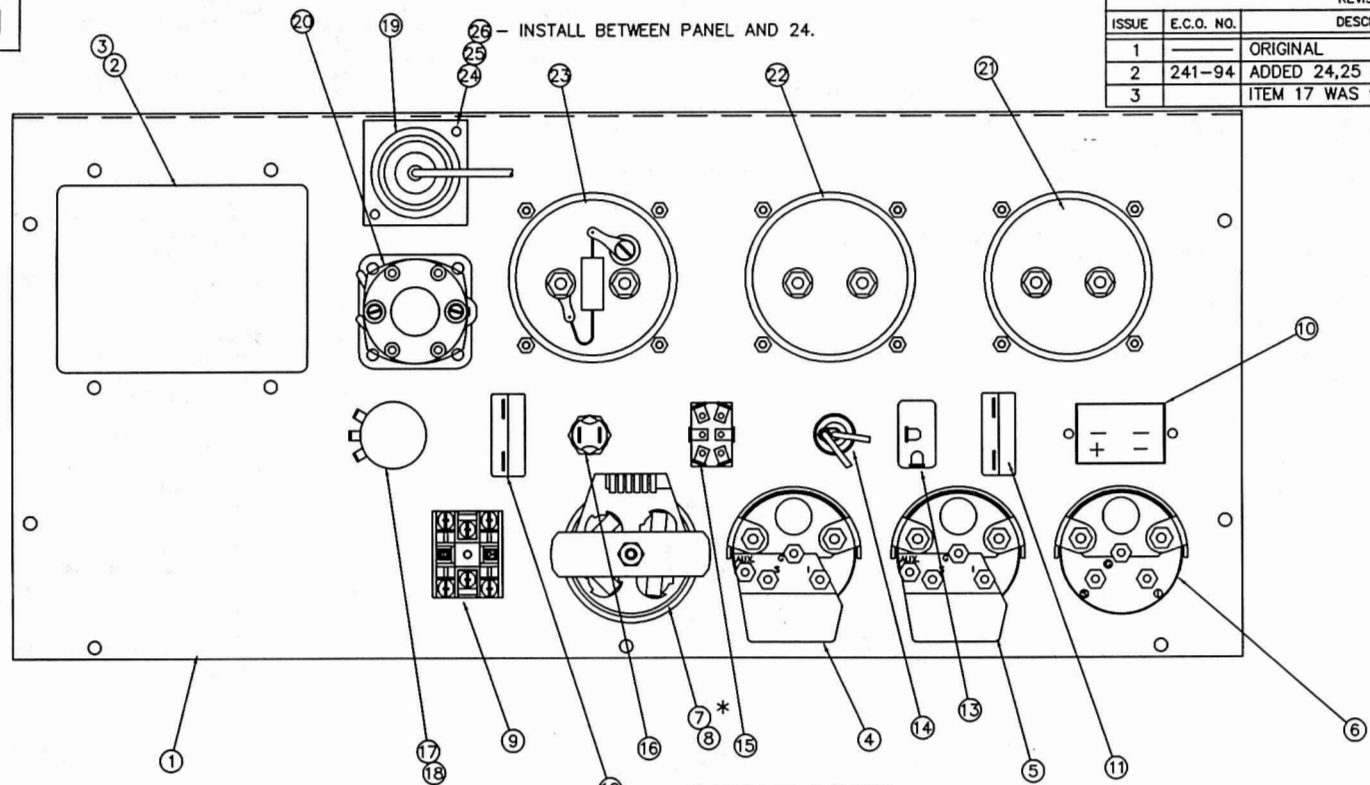
14	A-21486-000	1.75FT	LEADWIRE
13	4155-000	1	LUG
12	B-48602-002	1	LUG
11			
10	A-91780-000	3.20FT	LEADWIRE
9	A-64638-000	1.50FT	LEADWIRE
8	A-91815-000	6.42FT	LEADWIRE
7	A-21698-001	8	#10 SHEET METAL SCREW
6	B-64045-001	2	MOUNTING STRAP
5	A-56281-000	1	RECEPTACLE 20 AMPS 250 V.
4	B-91889-000	1	RECEPTACLE 50 AMPS
3	A-56279-000	1	RECEPTACLE 20 AMPS 125 V.
2	B-15147-002	1	GFCI DUPLEX RECEPTACLE
1	A-99200-000	1	MOUNTING, RECEPTACLE

ITEM	PART NO	QUAN.	DESCRIPTION
UNLESS OTHERWISE SPECIFIED			
FRACTIONS ±		ANGULAR	MACHINED SURFACE TEXTURE
1. PLACE DEC. ± .1		± 1.5°	
2. PLACE DEC. ± .03			
3. PLACE DEC. ± .005			
ALL DIMENSIONS GIVEN IN INCHES WORK TO DIMENSIONS - DO NOT SCALE -			
DRAWN BY D.M.W.		DATE 4-15-94	CH'KD BY R.H.
DATE 6-24-94		APP'D BY R.H.	SCALE 1=2
MATERIAL:			
FINISH		TITLE	
ASSY C-99256-000		RECEPTACLE PANEL ASS'Y	
MODEL MDS25		PART NO. B-99258-000	

THIS DRAWING CONTAINS PROPRIETARY INFORMATION BELONGING TO WINCO. UNAUTHORIZED USE IS PROHIBITED.

000-B-99246-000

REVISION RECORD					
ISSUE	E.C.O. NO.	DESCRIPTION	DATE	BY	APPR.
1		ORIGINAL			
2	241-94	ADDED 24,25 & 26.	8/18/94	RH	RH
3		ITEM 17 WAS 97517-001.	5/24/04	RH	



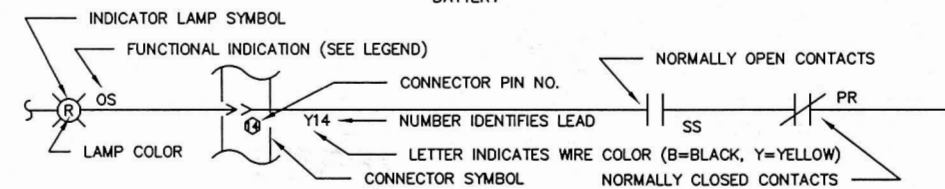
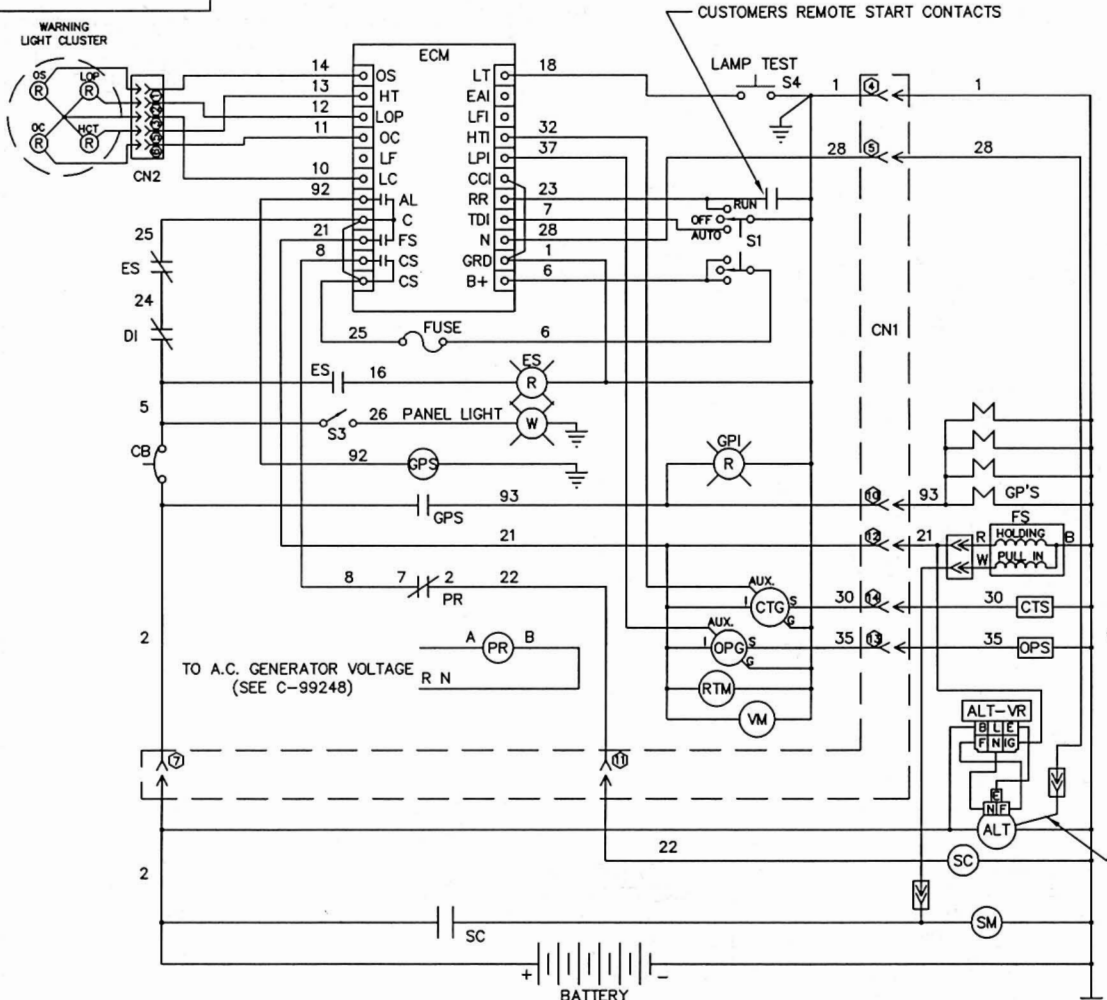
INSIDE VIEW

* LOOSEN NUT HOLDING BOARD TO BEZEL AND ROTATE THE BOARD 180° AND TIGHTEN NUT THEN MOUNT WITH CLAMP

14	A-98948-2	1	INDICATOR LAMP				
13	A-71215-1	1	SWITCH, (PANEL LIGHTS)				
12	B-91286-7	1	BREAKER (5 AMP.)	26	22423	2	#10 EXT. TOOTH LW
11	B-91286	1	CIRCUIT BREAKER (15 AMP.)	25	A-21698-1	2	BHSMs #10, BLACK
10	A-58166-6	1	RUNNING TIME METER	24	A-99297	1	BACKING PLATE, P.L.
9	A-94400-2	1	SWITCH, EMERGENCY STOP	23	A-99272-1	1	FREQ. METER
8	A-98947	1	HARNESS, LIGHT CLUSTER	22	A-99271-1	1	A.C. AMMETER
7	B-98946-1	1	LIGHT CLUSTER	21	A-99270-1	1	A.C. VOLTMETER
6	A-99268	1	GAUGE, VDC	20	A-99003	1	SELECTOR SWITCH
5	A-99266	1	GAUGE, PRESSURE	19	A-95807	1	LICENSE LIGHT
4	A-99264	1	GAUGE, TEMPERATURE	18	A-94394	1	KNOB
3	A-99210	1	MOUNTING PLATE, SS.	17	A-97517-003	1	POTENTIOMETER (10K,2W)
2	B-99251	1	PREWIRING, SELECTOR SWITCH	16	A-71444-1	1	SWITCH (LAMP TEST)
1	B-99182	1	CONTROL PANEL	15	A-71216-1	1	SWITCH(DPDT)
ITEM	PART NO	QTY.	DESCRIPTION	ITEM	PART NO	QTY.	DESCRIPTION

UNLESS OTHERWISE SPECIFIED		MACHINED SURFACE TEXTURE		ALL DIMENSIONS GIVEN IN INCHES			
FRACTIONS ±		ANGULAR ± 1.5°		WORK TO DIMENSIONS			
1. PLACE DEC. ± .1				- DO NOT SCALE -			
2. PLACE DEC. ± .03							
3. PLACE DEC. ± .005							
THIS DRAWING CONTAINS PROPRIETARY INFORMATION BELONGING TO WINCO, UNAUTHORIZED USE IS PROHIBITED.	DRAWN BY	DATE	CHK'D BY	DATE	APP'D BY	DATE	SCALE
	D.M.W.	4-11-94	RH		RH	6/24/94	1=2
	MATERIAL:						
	FINISH	TITLE					
ASSY	C-99256		ASSEMBLY, CONTROL PANEL				
MODEL	MDS25						
						PART NO. B-99246-000	

B-99247



REVISION RECORD					
ISSUE	E.C.O. NO.	DESCRIPTION	DATE	BY	APPR.
1		ORIGINAL			
2		RELOCATED FS PULL IN COIL NODE	7-13-95	C.M.	GR
3		REVISED ALTERNATOR CONNECTOR TERMINATIONS.	8/23/95	RH	

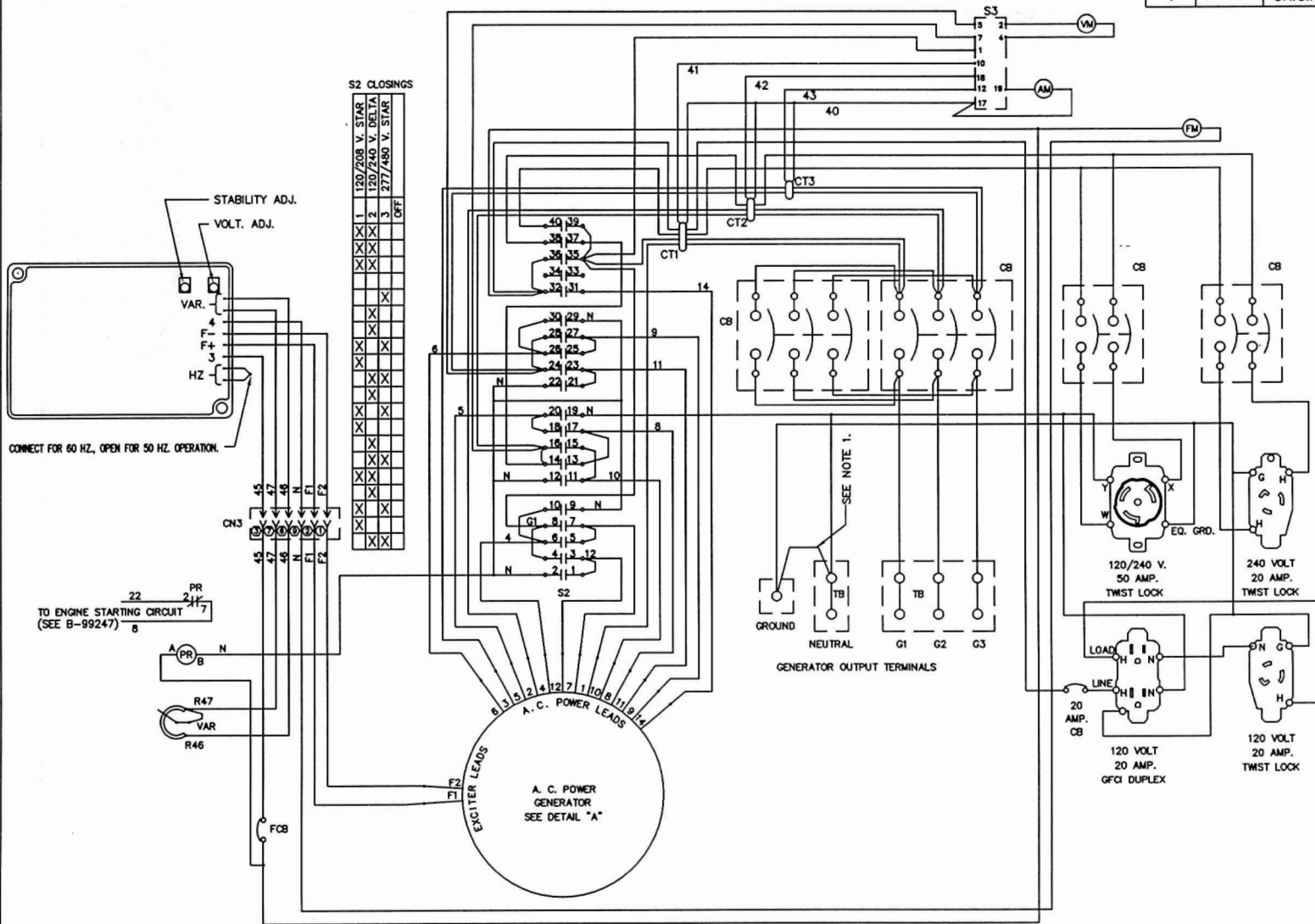
LEGEND

- ALT ALTERNATOR
- ALT-VR ALTERNATOR VOLTAGE REGULATOR
- CB CIRCUIT BREAKER
- CN1,CN2 WIRING HARNESS CONNECTORS
- CTG COOLANT TEMPERATURE GAUGE
- CTS COOLANT TEMPERATURE SENDER
- DI DOOR INTERLOCK
- ECM ENGINE CONTROL MODULE
- ES EMERGENCY STOP SWITCH
- FS FUEL RACK SOLENOID
- GND GROUND (CHASSIS OR FRAME)
- GP'S ENGINE GLOW PLUGS
- GPI GLOW PLUG INDICATOR
- GPS GLOW PLUG SOLENOID
- OPG OIL PRESSURE GAUGE
- OPS OIL PRESSURE SENDER
- OS OVERSPEED INDICATOR LAMP
- PR PROTECTIVE RELAY, STARTER
- RTM RUNNING TIME METER
- S1 ENGINE START MODE SWITCH
- S3 PANEL ILLUMINATION LIGHT SWITCH
- S4 ENGINE SHUTDOWN INDICATOR LAMP TEST SWITCH
- SC ENGINE STARTER MOTOR SOLENOID
- SM ENGINE STARTER MOTOR
- VM D.C. VOLTMETER

NOTE:
- ALTERNATOR CONNECTORS SHOWN WITH MATING FACE.

UNLESS OTHERWISE SPECIFIED		MACHINED SURFACE TEXTURE	ALL DIMENSIONS GIVEN IN INCHES				
FRACTIONS ±	ANGULAR		WORK TO DIMENSIONS				
1. PLACE DEC. ±	±		- DO NOT SCALE -				
2. PLACE DEC. ±							
3. PLACE DEC. ±							
THIS DRAWING CONTAINS PROPRIETARY INFORMATION BELONGING TO WINCO. UNAUTHORIZED USE IS PROHIBITED.	DRAWN BY	DATE	CHK'D BY	DATE	APP'D BY	DATE	SCALE
	RH	4/5/94	RH		RH	4/5/94	1=1.5
	FINISH		TITLE				
	ASS'Y		D.C. SCHEMATIC				
MODEL		MDS25		PART NO.			B-99247
WINCO INCORPORATED							

REVISION RECORD					
ISSUE	E.C.O. NO.	DESCRIPTION	DATE	BY	APPR.
1		ORIGINAL			

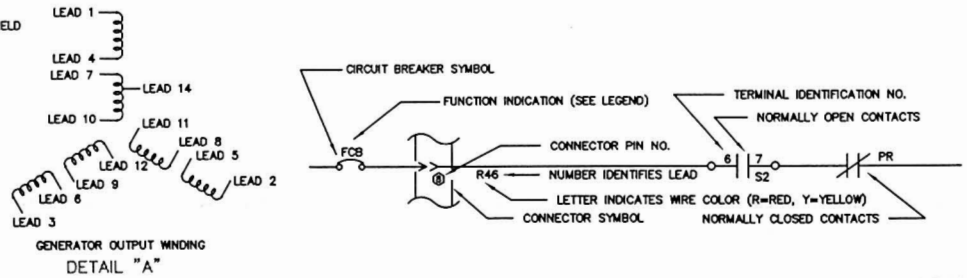
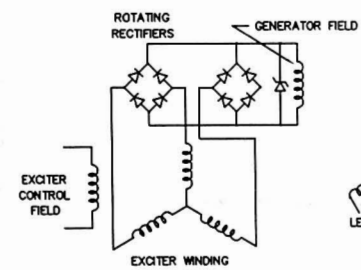


LEGEND

- AM AMMETER
- CB CIRCUIT BREAKER
- CN3 WIRING HARNESS CONNECTOR
- CT CURRENT TRANSFORMER
- FCB FIELD CIRCUIT BREAKER
- FM FREQUENCY METER
- G EQUIPMENT GROUND
- G1, G2, & G3 GENERATOR POWER LEAD IDENTIFICATION
- GVR GENERATOR VOLTAGE REGULATOR
- H RECEPTACLE POWER TERMINAL
- N GENERATOR NEUTRAL IDENTIFICATION
- PR START SIGNAL DISCONNECT RELAY
- S2 VOLTAGE CONFIGURATION SELECTOR SWITCH
- S3 VM/AM SELECTOR SWITCH
- TB TERMINAL BLOCK
- VM VOLTMETER
- VAR VOLTAGE ADJUSTMENT RHEOSTAT
- W GENERATOR POWER LEAD IDENTIFICATION
- X GENERATOR POWER LEAD IDENTIFICATION
- Y GENERATOR POWER LEAD IDENTIFICATION

NOTES:
1. REMOVE JUMPER FOR ISOLATED NEUTRAL APPLICATIONS.

REF. 98983-2




UNLESS OTHERWISE SPECIFIED		MACHINED SURFACE TEXTURE		ALL DIMENSIONS GIVEN IN INCHES			
FRACTIONS ±	—	ANGULAR	± 1.5°	WORK TO DIMENSIONS			
1. PLACE DEC. ±	.1			— DO NOT SCALE —			
2. PLACE DEC. ±	.03						
3. PLACE DEC. ±	.005						
DRAWN BY	DATE	CHKD BY	DATE	APP'D BY	DATE	SCALE	
RH	4/5/94					1"=1"	
THIS DRAWING CONTAINS PROPRIETARY INFORMATION BELONGING TO WINCO. UNAUTHORIZED USE IS PROHIBITED.		MATERIAL		TITLE		PART NO.	
		MDS25		A.C. SCHEMATIC		C-99248	
		WINCO INCORPORATED					

WINCO INC
A Division of **DTP** Dyna Technology Inc
225 South Cordova Avenue
Le Center MN 56057
507-357-6831

000-99283-V

ITEM	QTY.	DESCRIPTION
A-64214-042	3	DECAL, INDUSTRIAL
A-97381-000	1	LABEL-DIESEL FUEL
A-97382-000	1	DECAL-WARNING
B-97813-000	4	DECAL, WARN-AUTO START
B-97830-000	1	DECAL-WARNING
A-98413-004	3	DECAL-MD25
A-97379-000	1	DECAL JACK WARNING
A-60710-097	1	TAG, CHECK OIL & COOLANT LEVEL
A-15209-000	1	WARNING

UNLESS OTHERWISE SPECIFIED		MACHINED SURFACE TEXTURE		ALL DIMENSIONS GIVEN IN INCHES			
FRACTIONS ±		ANGULAR		WORK TO DIMENSIONS			
1. PLACE DEC. ± .1		± 1.5°		- DO NOT SCALE -			
2. PLACE DEC. ± .031							
3. PLACE DEC. ± .005							
THIS DRAWING CONTAINS PROPRIETARY INFORMATION BELONGING TO WINCO, UNAUTHORIZED USE IS PROHIBITED.	DRAWN BY	DATE	CH'KD BY	DATE	APP'D BY	DATE	SCALE
	D.M.W.	7-7-94					1=1
	MATERIAL:						
	FINISH	TITLE					
	ASS'Y	99226-001		DECAL INSTALLATION			
MODEL	MDS25						
						PART NO. A-99283-000	

ISSUE	E.C.O. NO.	DESCRIPTION	DATE	BY	APPR.
4		ADDED 15209-000	9-15-04	MTH	
3	121-04	ADDED 60710-097	8-26-04	TAP	TAP
2	049-00	ADDED 97379, 98413-4 WAS QTY 2	3-17-00	BN	SV
1	---	ORIGINAL	-----	---	---
REVISION RECORD					