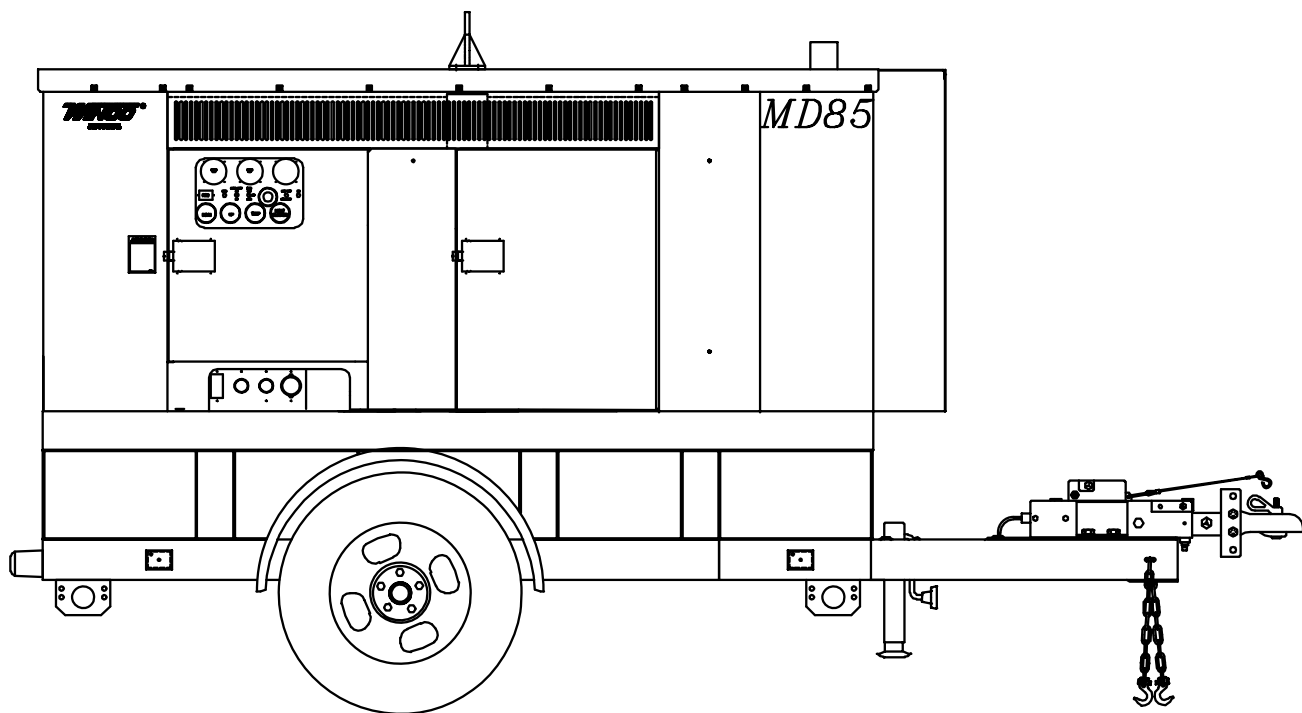


# ILLUSTRATED PARTS LIST

## MDS85R3

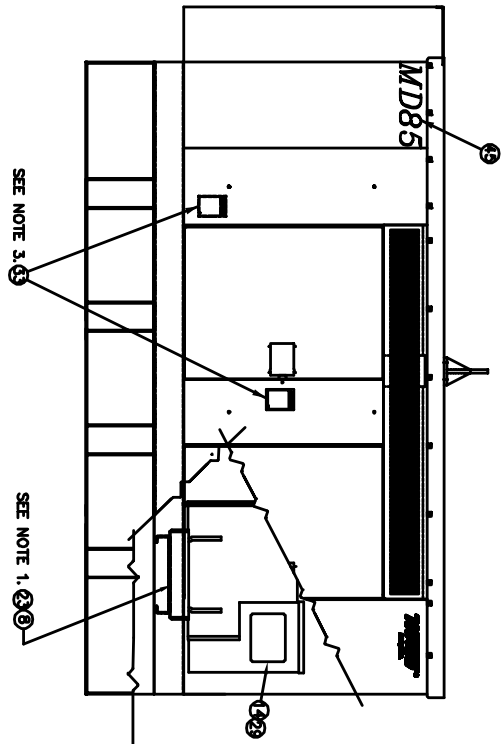
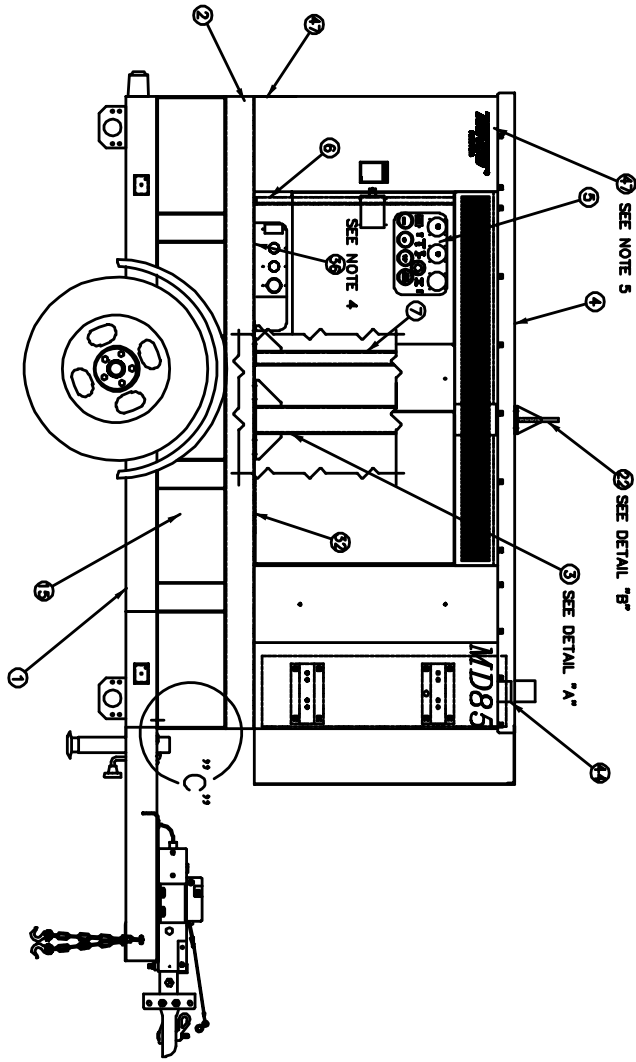


# COMPLETE UNIT ASSEMBLY

MDSB	MODEL	ITEM(1)	ITEM(2)	ITEM(5)	ITEM(7)	QTY (34)	QTY (35)	QTY (36)	QTY (37)	QTY (38)	QTY (39)	QTY (40)	QTY (44)
99634-000	MDSBR3	99602-003	99626-001	99256-004	60706-134	2	1	2	20	20	20	20	1
99634-001	MDSBE2	99602-003	99626-003	99256-006	60706-134	2	1	2	20	20	20	20	1
99634-002	MDSBE3	99602-003	99626-003	99256-005	60706-134	2	1	2	20	20	20	20	1
99634-003	MDSBR2	99602-003	99626-001	99256-007	60706-134	2	1	2	20	20	20	20	1
99634-004	MDSBR3	99602-003	99626-001	99256-004	60706-134	0	0	2	12	12	12	12	1
99634-005	MDSBE2	NONE	99626-003	99256-006	60706-134	0	0	2	12	12	12	12	1
99634-006	MDSBE3	NONE	99626-003	99256-005	60706-134	0	0	2	12	12	12	12	1
99634-007	MDSBR2	NONE	99626-001	99256-007	60706-134	0	0	2	12	12	12	12	1
99634-008	MDSBR3	99602-004	99626-001	99256-004	60706-139	2	1	2	20	20	20	20	1

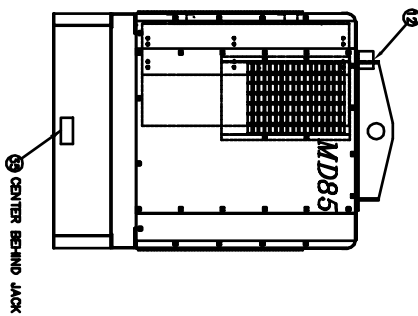
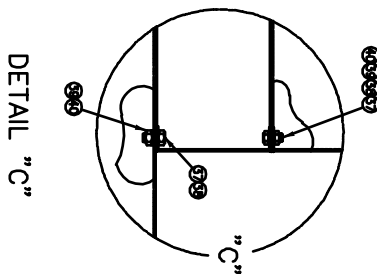
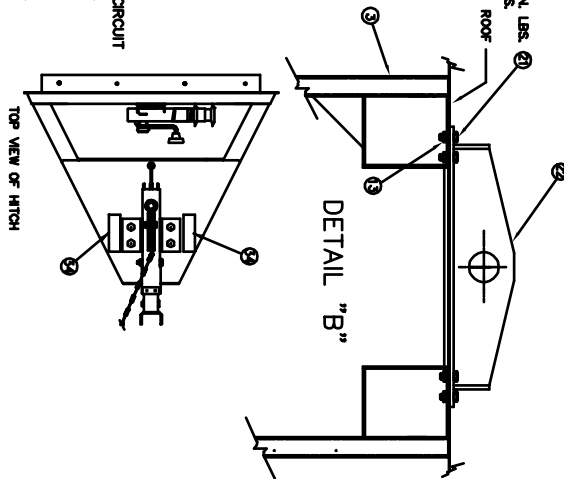
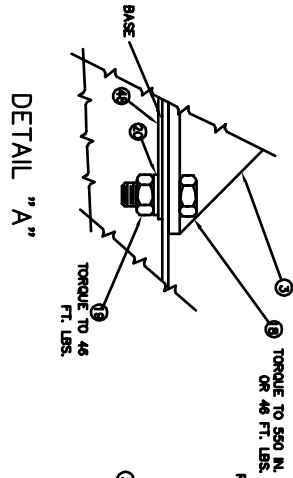
17	SEE TABLE	1	LITERATURE	34	A-97830-000	<sup>3/16</sup>	DECAL WARNING "BLOCK WHEELS"	51					
16	99620-001	1	FUEL SYSTEM INSTALLATION	33	A-97813-000	7	DECAL AUTO START	50	98372-018	1			
15	B-99620-000	1	100 GALLON FUEL TANK	32	A-97381-000	1	DECAL DIESEL FUEL	49	98884-003	1			
14	B-91713-001	1	NAMEPLATE, STAMPED	31				48	A-98607-002	4			
13	A-92242-000	8	HEX NUT SELF LOCKING 1/2-13	30	55440-000	12	1/4-20 X 1/2" SELF TAPPING SCREW	47	A-64214-046	3			
12	C-99533-002	1	EXHAUST ASSEMBLY	29	A-21698-1	4	#10 SELF TAPPING SCREW	46	A-97382-000	1			
11	A-64167-001	1	BATTERY HOLD DOWN	28	512-000	2	FLAT WASHER, 1/4"	45	A-98413-011	3			
10	A-64240-000	2	BATTERY HOLD DOWN ROD	27	47517-000	2	1/4-20 SELF LOCKING NUT	44	15209-002	2			
9	A-91335-000	6.5"	SLEEVE	26	479-000	13	LOCK WASHER 1/4 SPLIT	43	15209-000	2			
8	A-99505-001	1	BATTERY TRAY WELDMENT	25	638-000	13	HEX NUT 1/4-20	42	60710-110	1			
7	A-99636-000	1	SUPPORT BRACKET CONTROL BOX	24	483-000	13	HHCS 1/4-20 X 1/2"	41					
6	A-99497-000	1	CONTROL ANGLE ASSEMBLY	23	62173-000	4	SELF TAPPING SCREW, 5/16-18 X 3/4"	40	A-93709-000				
5	SEE TABLE	1	COMPLETE CONTROL ASSEMBLY	22	B-92212-003	1	EYE WELDMENT	39	A-93710-000				
4	C-99521-002	1	HOUSING ASSEMBLY	21	57580-000	8	HHCS 1/2-13 X 1.5"	38	1178-000				
3	B-99163-003	1	LIFTING YOKE	20	636-000	10	LOCK WASHER, 1/2" SPLIT	37	A-93711-001				
2	SEE TABLE	1	ENGINE-GENERATOR INSTALLATION	19	1744-000	10	HEX NUT, 1/2"	36	B-15209-003				
1	SEE TABLE	1	COMPLETE TRAILER ASSEMBLY	18	1516-000	10	HHCS 1/2-13 X 1-1/4" GRADE 5	35	A-97379-000				
ITEM	PART NO	QUAN.	DESCRIPTION	ITEM	PART NO	QUAN.	DESCRIPTION	ITEM	PART NO	QUAN.	DESCRIPTION	ITEM	DESCRIPTION

# COMPLETE UNIT ASSEMBLY

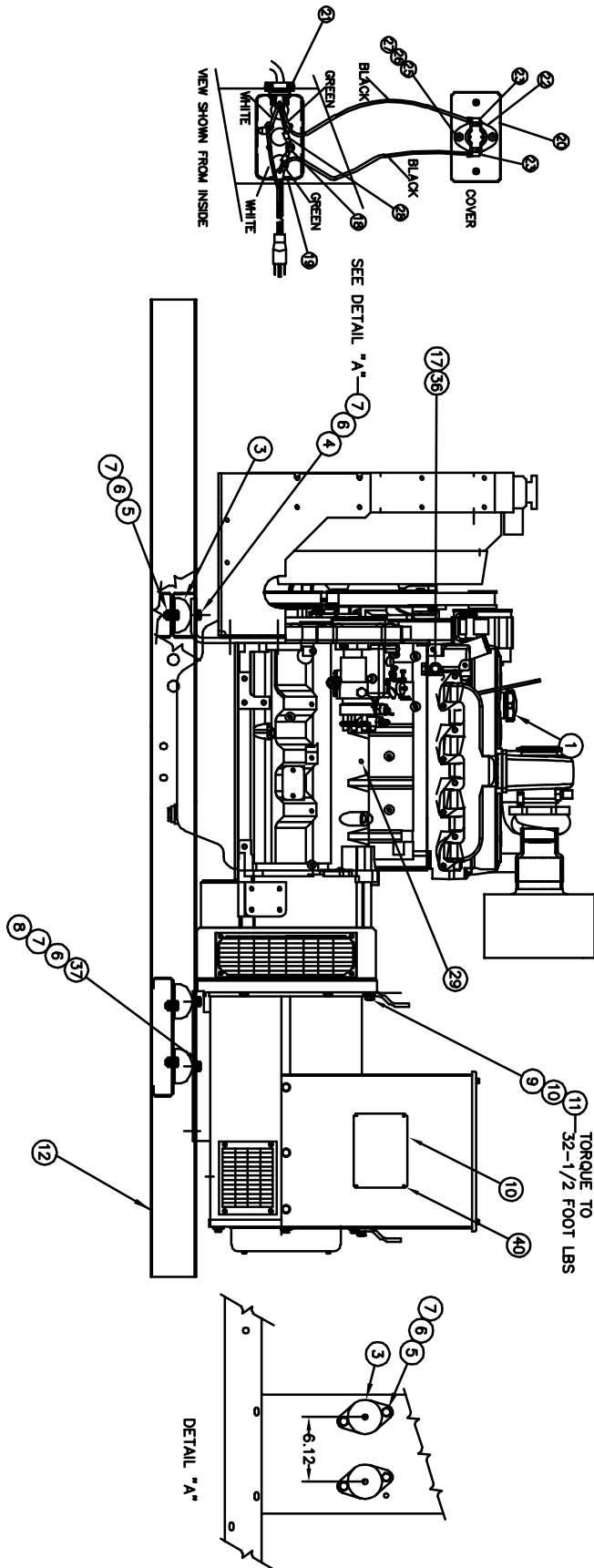


# COMPLETE UNIT ASSEMBLY

- NOTE 1: ITEMS ①②③ ARE TO BE PACKED LOOSE WITH TOW HITCH RING & SERVICE MANUALS
- NOTE 2: CONNECT CONTROL BOX LEAD WIRES TO GENERATOR LEAD WIRES USING ④, ⑤, ⑥, AND ⑦
- NOTE 3: PLACE ④ DECALS ONE NEXT TO EACH DOOR STRIKER PLATE, ① ON THE CIRCUIT BREAKER COVER, ② ON EACH SIDE OF ENGINE RADIATOR MOUNTING PLATE.
- NOTE 4: PLACE ① DECAL NEXT TO THE RECEPTACLES AND ① ON THE TERMINAL COVER.
- NOTE 5: PLACE THE THIRD DECAL IN THE CENTER OF THE REAR BOTTOM SILL PANEL.



# ENGINE & GENERATOR ASSEMBLY

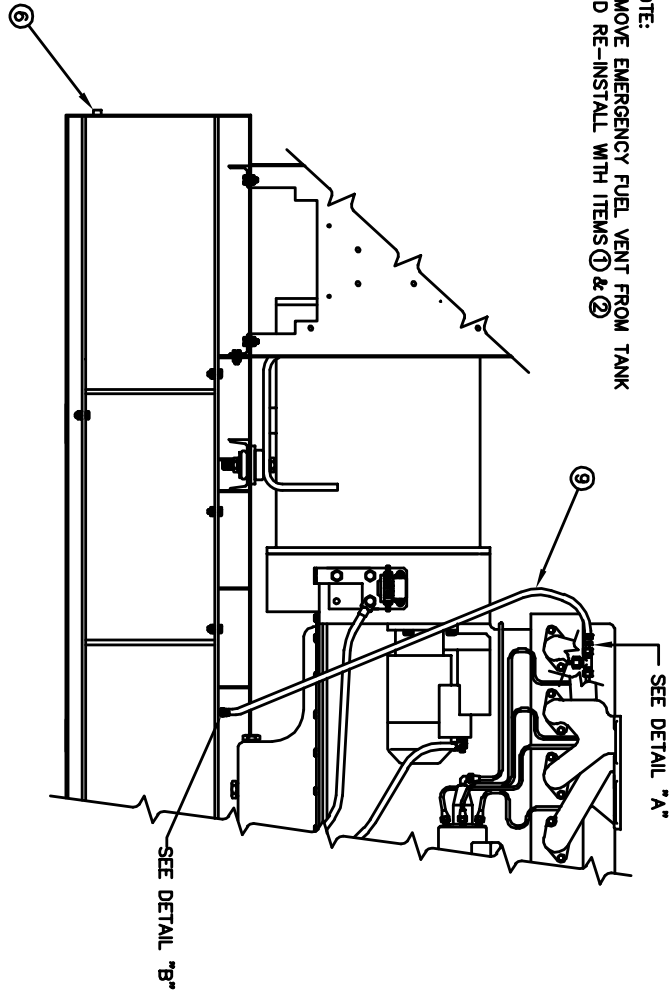
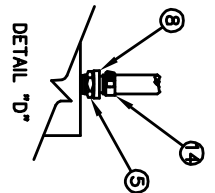
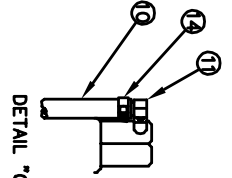
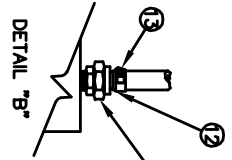
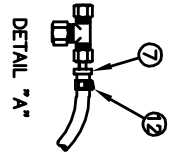


# ENGINE & GENERATOR ASSEMBLY

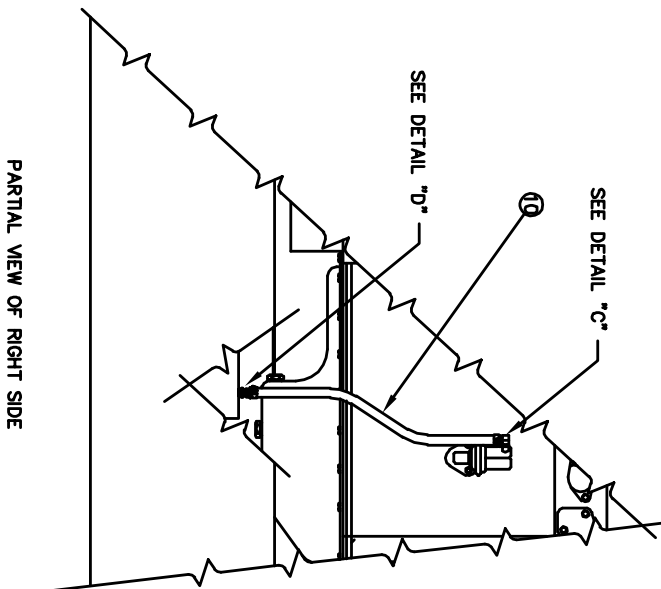
39	96000-004	4	HHCS 3/8-16 X 1-1/2
40	A-10809-000	4	SCREW #4 X 1/4
38	96000-003	8	HHCS 3/8-16 X 1-1/4
37	57580-000	4	HHCS 1/2-13 X 1.5
36	56372-000	1	REDUCER 3/8 X 1/2
35	92584	1	ELBOW
34	96195-004	1	CONNECTION TUBE
33	93689-000	1 FT	BREATHER HOSE
32	99669-000	1	ENGINE WIRING HARNESS
31	93073-002	2	ROME X CONNECTOR
30	350255-3	1	KIT, OIL DRAIN
29	99267-1	1	OIL SENDER SWITCH
28	A-81963-1	1	LUG
27	6174	2	.H.H.C.S.. #8-32 X 3/8
26	6376	2	LOCK WASHER #8
25	5113	2	HEX NUT #8-32
24	12624	.50 FT	LEAD WIRE 16 GA.
23	A-61898	2	LUG
22	A-15816-1	1	THERMOSTAT
21	A-93073	1	CONNECTOR
20	A-15812	1	COVER
19	A-92789	1	UTILITY BOX
18	A-99635-000	1	HEATER, ENGINE (1000 WATT, 120 VOLT)
17	A-99265-000	1	TEMPERATURE SENSOR
16	A-80980	1	START SOLENOID
15	99639-000	1	SIDE PANEL
14	B-53220-65	1	BATTERY CABLE
13	B-53220-55	1	BATTERY CABLE
12	B-99480-004	1	GENERAL FRAME
11	A-23597-000	8	3/8-16 X .88 HEX HEAD BOLT
10	B-91713-000	1	NAME PLATE
9	481-000	20	3/8 SPLIT LOCK WASHER
8	A-21867-000	6	1/2 FLAT WASHER
7	1744-000	18	1/2-13 HEX NUT
6	636-000	18	1/2 SPLIT LOCK WASHER
5	A-48178-000	12	1/2-13 X 1.00 HEX HEAD BOLT
4	A-57580-003	2	1/2-13 X 2.00 HEX HEAD BOLT
3	A-98956-001	6	SHOCK MOUNTS
2	B-350003-705	1	NEWAGE GENERATOR MODEL UCI-224G
1	B-98851-005	1	JOHN DEERE DIESEL ENGINE
ITEM	PART NO	QUAN.	DESCRIPTION

# FUEL SYSTEM ASSEMBLY

NOTE:  
REMOVE EMERGENCY FUEL VENT FROM TANK  
AND RE-INSTALL WITH ITEMS ① & ②



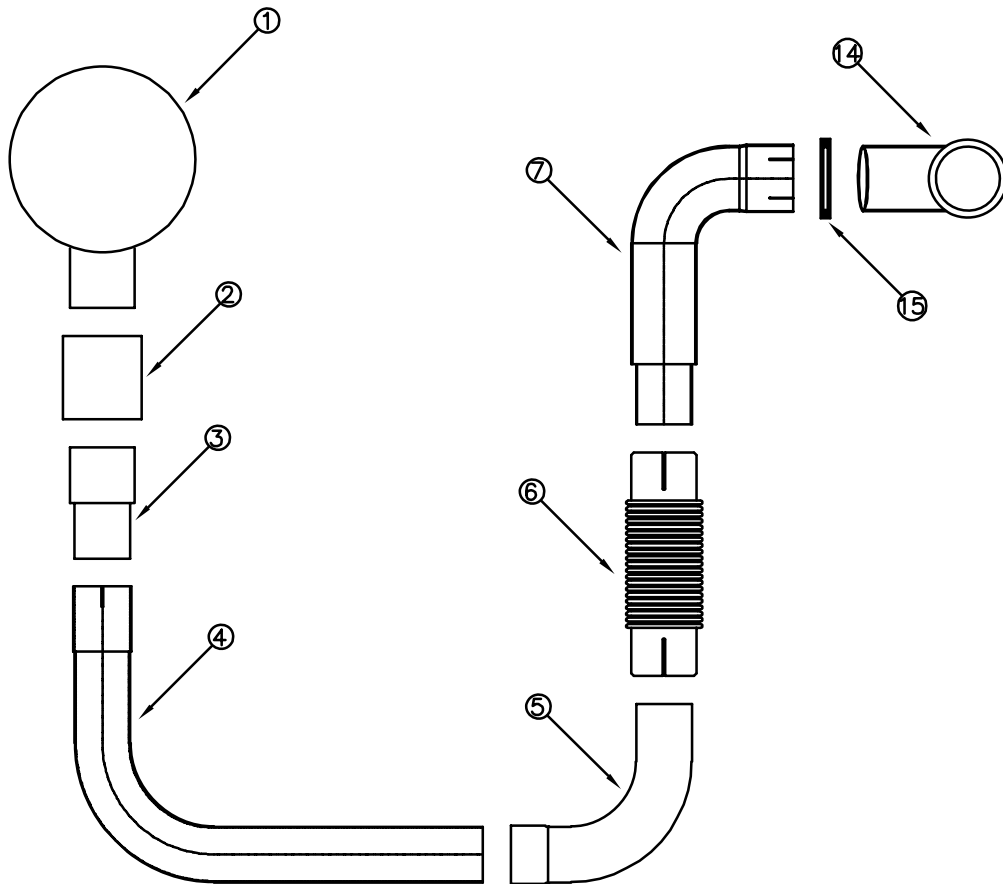
SECTIONAL VIEW OF RIGHT SIDE



PARTIAL VIEW OF RIGHT SIDE

ITEM	PART NO.	QUAN.	DESCRIPTION	ITEM	PART NO.	QUAN.	DESCRIPTION
13	91747-000	1	1/4-18 NPT TO 1/4 HOSE FITTING	14	81018-008	2	7/8 HOSE CLAMP
11	A-98918-000	1	FUEL FITTING INLET	12	81018-008	2	5/8 HOSE CLAMP
9	A-40078-014	1	1/4" I.D. HOSE	10	55505-007	1	3/8" I.D. HOSE
7	72300-003	1	FUEL FITTING RETURN	8	A-94319-007	1	3/8-18 NPT TO 3/8 HOSE FITTING
5	56372-000	1	REDUCER 3/8 X 1/2	6	93084-000	2	PIPE PLUG
3	93947-000	1	REDUCER 1/4 X 1/2	4			
1	A-93915-002	1	3" NPT X 6" NIPPLE	2	A-81739-003	1	3" COUPLER

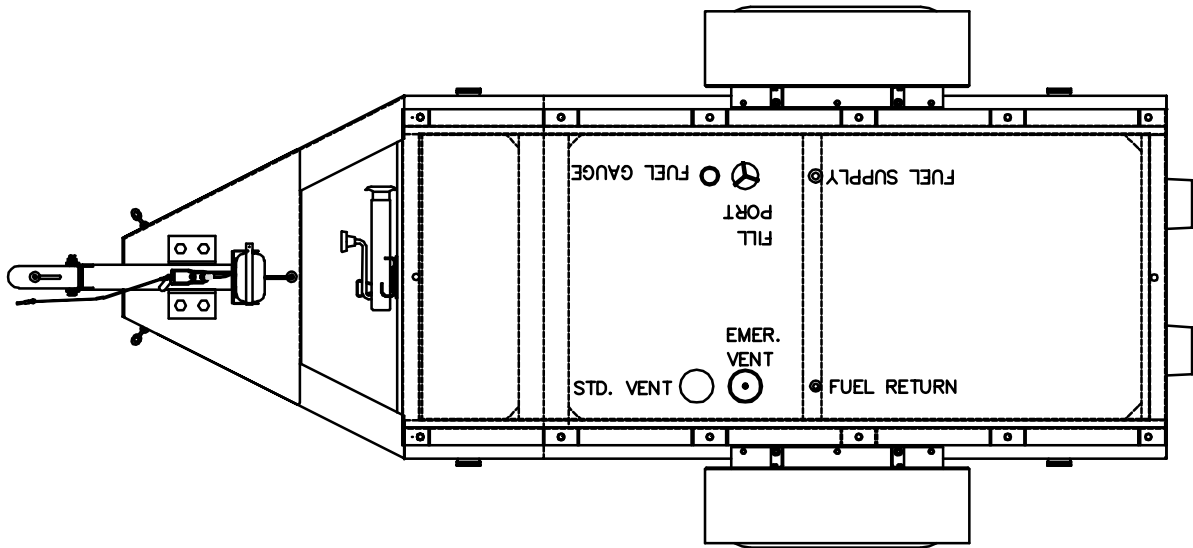
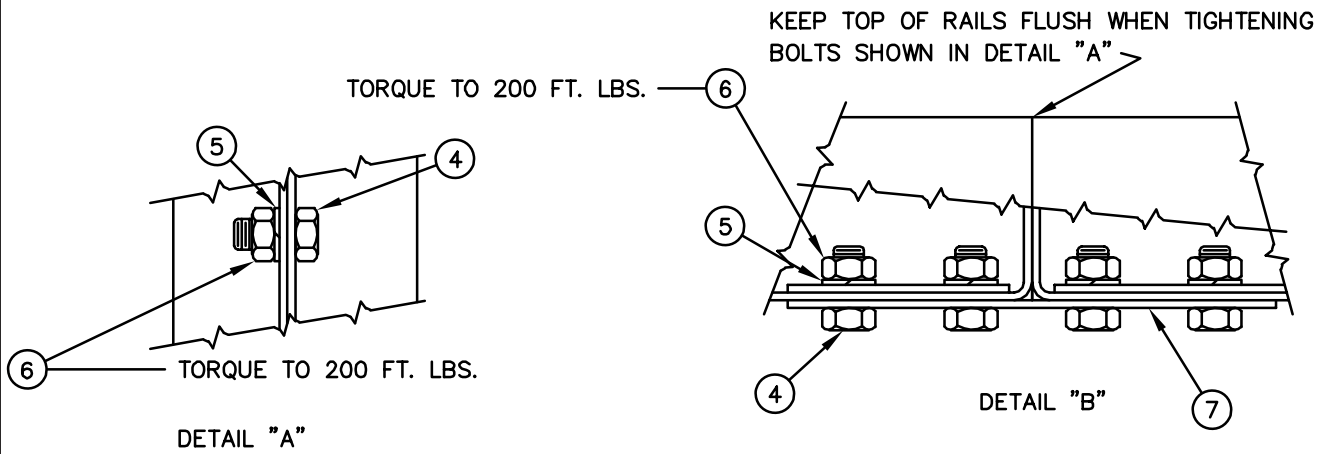
# EXHAUST ASSEMBLY



15	A-93489-000	1	CLAMP - MUFFLER
14	A-99621-002	1	EXHAUST ELBOW
13	A-20667-000	5	RHMS 1/4-20 X 2"
12	A-93484-001	5	MOUNTING BRACKET
11	A-92419-000	8	NUT RETAINER
10	A-97274-000	50FT	HIGH TEMP WOVEN TAPE
9	A-93489-001	4	CLAMP - MUFFLER
8	A-53111-005	1	RAIN CAP
7	A-99621-001	1	EXHAUST ELBOW
6	A-16016-002	1	FLEX TUBING
5	A-99535-000	1	EXHAUST ELBOW
4	A-99502-000	1	EXHAUST ELBOW
3	A-99499-001	1	THREAD ADAPTER
2	A-81739-003	1	PIPE COUPLING
1	A-97409-002	1	MUFFLER
ITEM	PART NO	QUAN.	DESCRIPTION



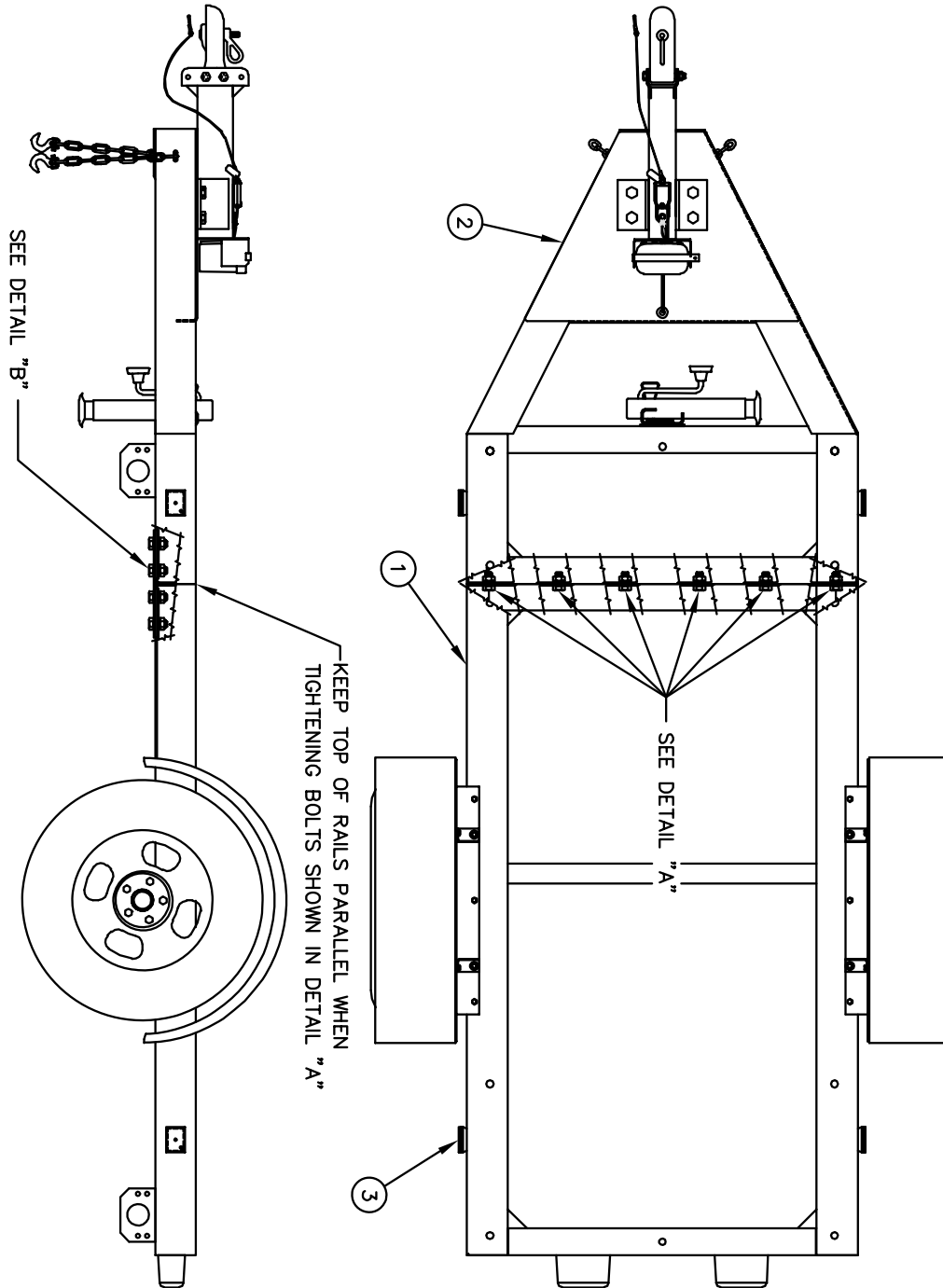
# TRAILER ASSEMBLY



FUEL TANK POSITION ON TRAILER DETAIL

7	A-99607-001	2	TIE PLATE
6	A-93709-000	14	3/4-10 HEX NUT
5	A-93710-000	14	3/4 SPLIT LOCKWASHER
4	A-93711-001	14	3/4-10 X 1.50 HEX HEAD BOLT
3	B-97767-004	1	TRAILER ELECTRICAL INSTALLATION
2	A-99602-005	1	TRAILER TONGUE ASSEMBLY
1	B-99602-006	1	TRAILER BASE ASSEMBLY
ITEM	PART NO	QUAN.	DESCRIPTION

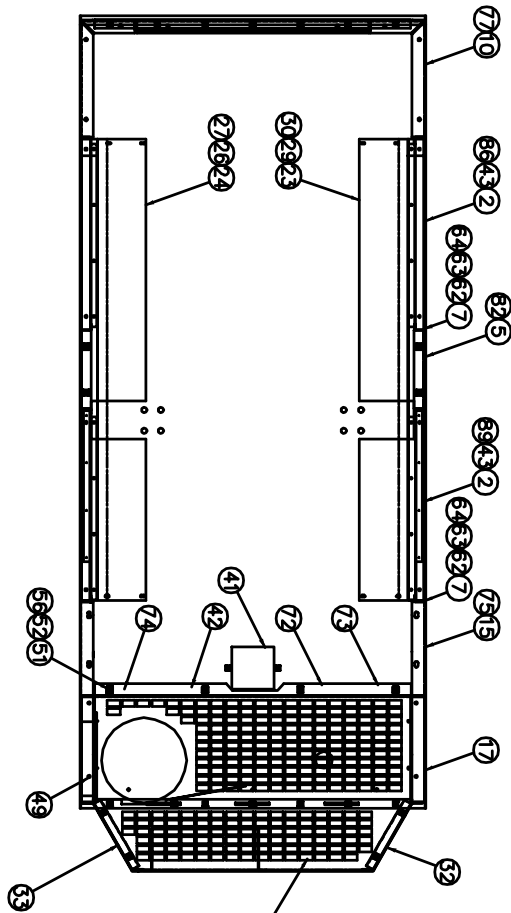
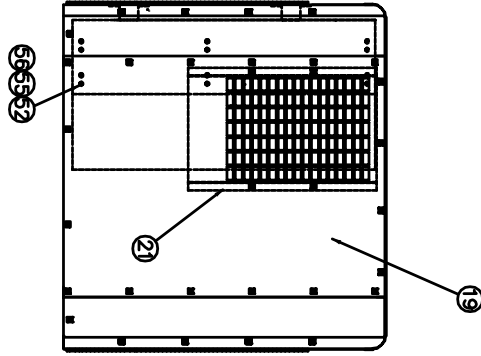
# TRAILER ASSEMBLY



**WINCO INC**  
A Division of **DTI** Dyna Technology Inc

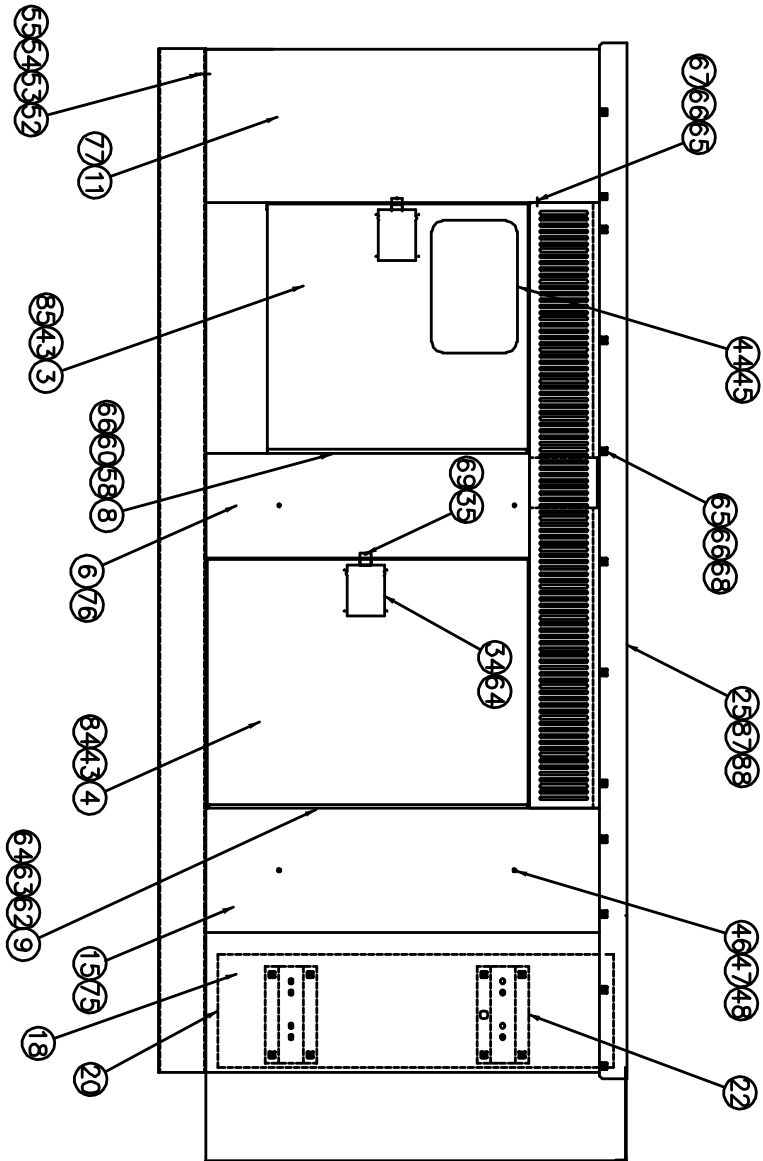
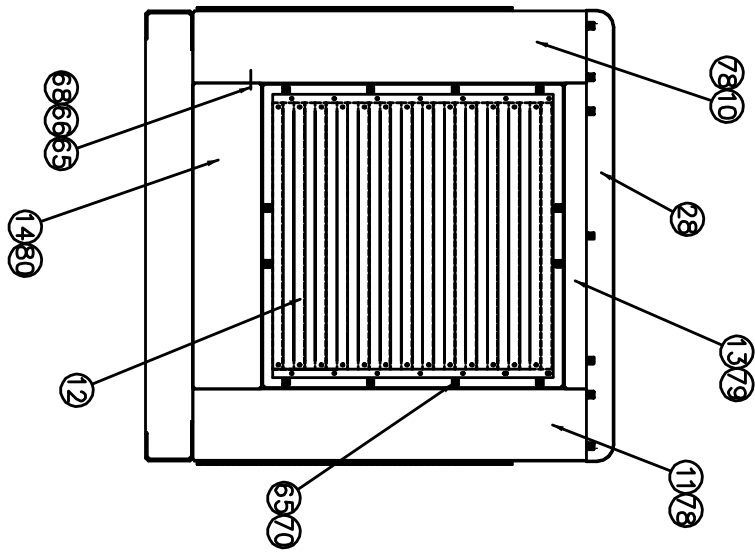
225 S. CORDOVA AVE.  
LECENTER, MN 56057  
507-357-6821  
SERVICE DEPT.  
507-357-6831

# HOUSING ASSEMBLY



31 TOP PANEL  
 18 BOTTOM PANEL  
 9 BOTTOM PANEL PATCH PLATE

# HOUSING ASSEMBLY



# HOUSING ASSEMBLY

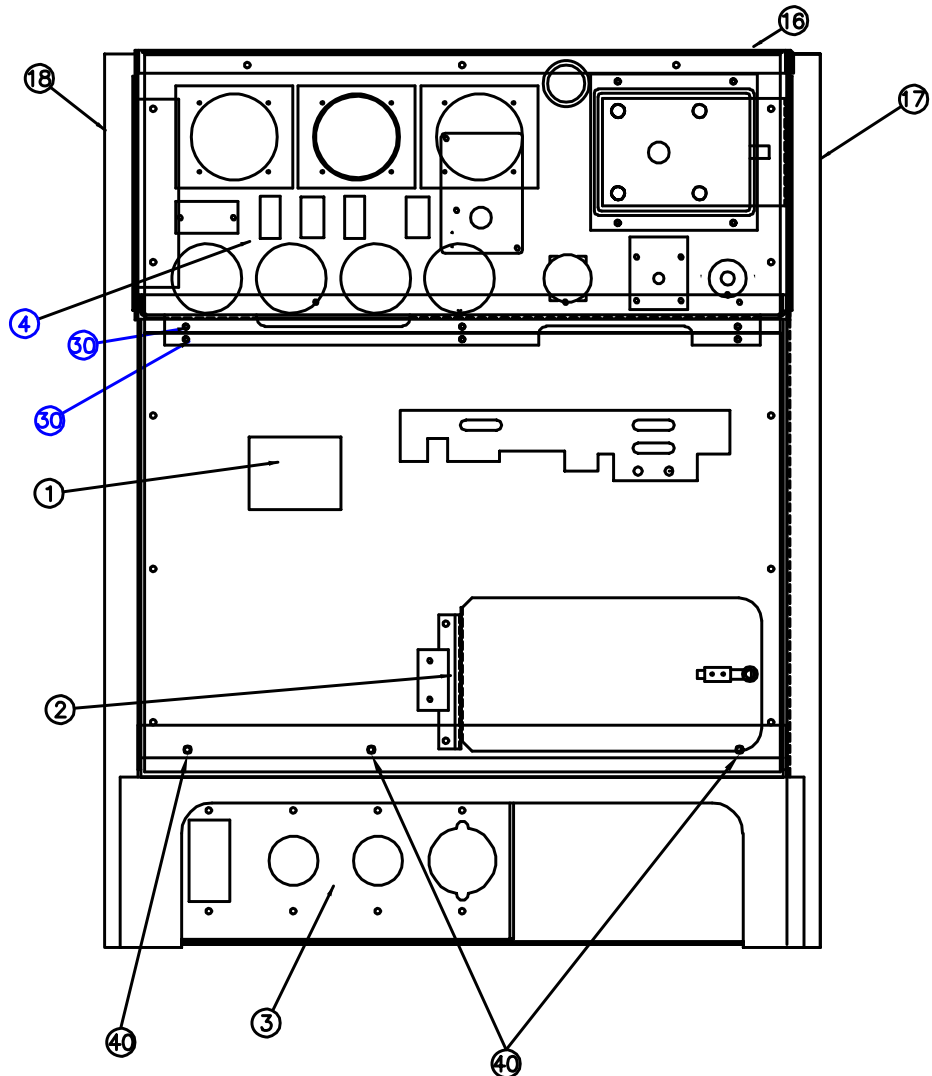
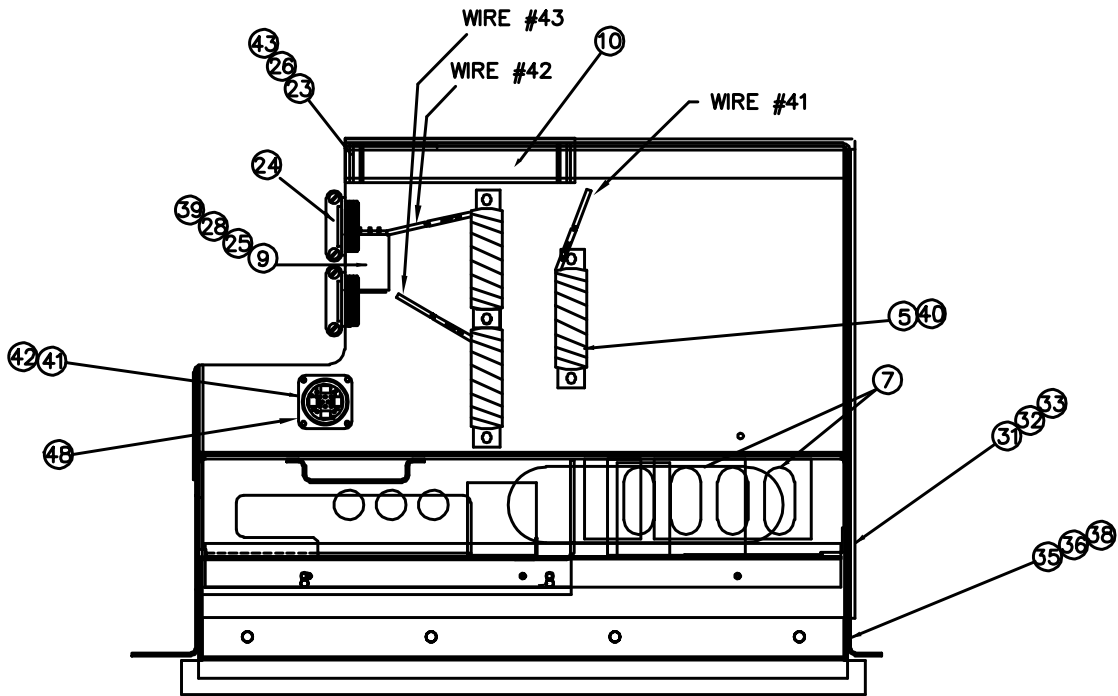
50	A-21698-1	12	SCREW SELF TAP #10
49	A-55440	24	SELP TAP 1/4-20
48	47517	8	HEX LOCK NUT 1/4-20
47	21253	8	RHMS 1/4-20 X 3/4
46	61660	8	RUBBER FOOT
45	A-95998	4 FT	DOUBLE FACE ACRYLIC TAPE
44	A-96448-2	1	WINDOW PANEL
43	A-62912	39 FT	STRIP (DOOR GASKET)
42	A-92421	11.2FT	FOAM STRIP (2 PCS 25" & 3 PCS 28")
41	A-62026-2	1	GENERATOR HOUSING COOLANT COVER
40			
39			
38			
37			
36			
35	A-99243	4	STRIKER PLATE
34	A-99269	4	LATCH
33	A-99623-1	1	SIDE PANEL, EXTENSION R.H.
32	A-99623	1	SIDE PANEL, EXTENSION L.H.
31	A-99624	1	EXTENSION TOP PANEL
30	A-99408-6	1	END PANEL, SILL R.H.
29	A-99408-5	1	END PANEL, SILL L.H.
28	B-99408-4	1	HOUSING, ROOF END PANEL
27	A-99408-3	1	END PANEL, SILL R.H.
26	A-99408-2	1	END PANEL, SILL L.H.
ITEM	PART NO	QUAN.	DESCRIPTION
25	A-99206-3	1	ROOF
24	B-99172-2	1	HOUSING, RIGHT VENTED DOOR SILL
23	B-99172-1	1	HOUSING, LEFT VENTED DOOR SILL
22	A-99622	2	MTG. BRKT., MUFFLER
21	A-99482-2	1	AIR CHAMBER, NOISE SHIELD
20	A-99482-1	1	MUFFLER HEAD SHIELD
19	A-99144-5	1	FRONT PANEL, EXTENSION
18	A-99143-6	1	PANEL R.H., AIR CHAMBER
17	A-99143-5	1	PANEL L.H., AIR CHAMBER
16	A-99143-4	1	FLOOR, AIR CHAMBER
15	B-99141-2	1	GENERATOR HOUSING RADIATOR BAFFLE
14	A-99169-3	1	SILL, REAR BOTTOM
13	A-99169-2	1	REAR SILL, TOP
12	A-99632	1	ASSEMBLY, DOOR
11	B-99167-3	1	HOUSING, RIGHT REAR CORNER POST
10	B-99167-2	1	HOUSING, LEFT REAR CORNER POST
9	A-99143-011	1	FLOOR, AIR CHAMBER PATCH PLATE
8	C-99240-1	1	HINGE
7	A-99240	3	HINGE
6	A-99171-3	1	HOUSING, RIGHT CENTER POST
5	B-99171-2	1	HOUSING, LEFT CENTER POST
4	A-99207-4	1	SIDE DOOR
3	A-99207-3	1	SIDE DOOR
2	B-99207	2	SIDE DOOR
1			
ITEM	PART NO	QUAN.	DESCRIPTION

# HOUSING ASSEMBLY

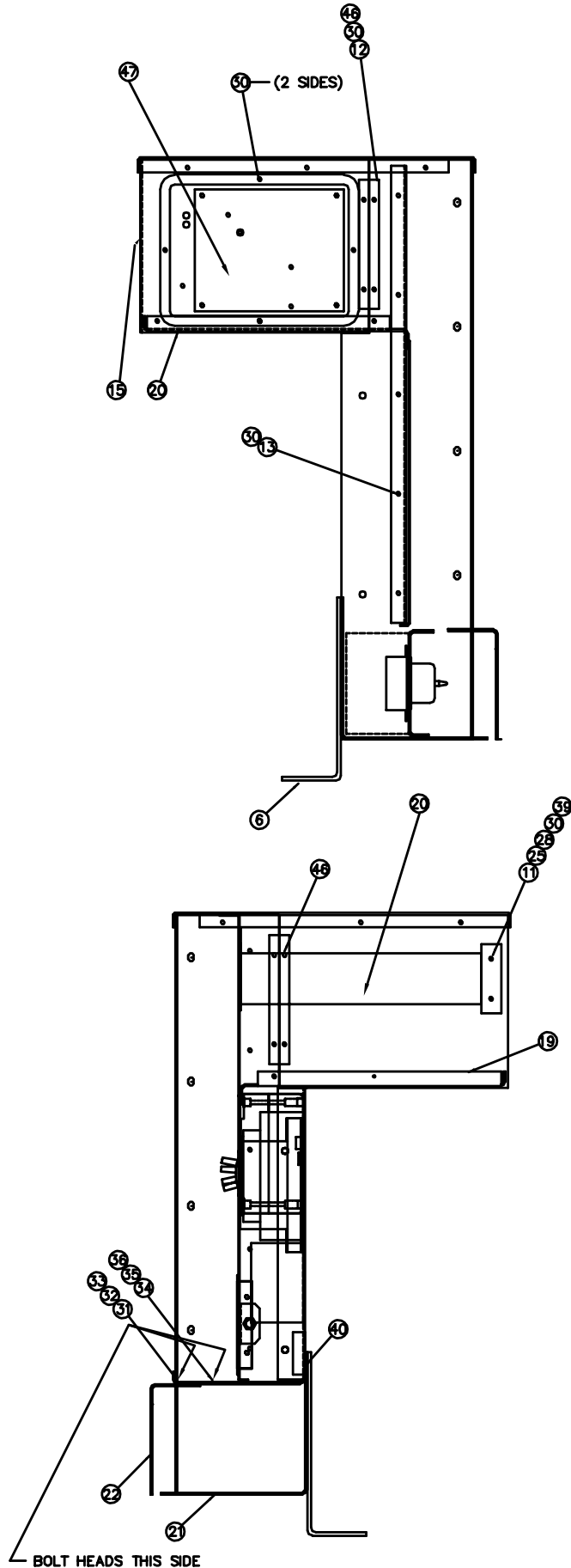
89	B-99641-18	REF.	FOAM
88	B-99641-17	REF.	FOAM
87	B-99641-16	REF.	FOAM
86	B-99641-15	REF.	FOAM
85	B-99641-14	REF.	FOAM
84	B-99641-13	REF.	FOAM
83			
82	B-99641-11	REF.	FOAM
81			
80	B-99641-9	REF.	FOAM
79	B-99641-8	REF.	FOAM
78	B-99641-7	REF.	FOAM
77	B-99641-6	REF.	FOAM
76	B-99641-5	REF.	FOAM
ITEM	PART NO	QUAN.	DESCRIPTION

75	B-99641-4	REF.	FOAM
74	B-99641-3	REF.	FOAM
73	B-99641-2	REF.	FOAM
72	B-99641-1	REF.	FOAM
71	B-99641-000	1	FOAM KIT
70	A-94375-3	10	SCREW 1/4-20 X 1 1/2 BLACK
69			
68	463	114	HHCS 1/4-20 x 1/2
67	476	8	HHCS 1/4-20 x 5/8
66	479	122	LOCK WASHER 1/4
65	A-92495	134	NUT RETAINER 1/4-20
64	5315	57	ELASTIC STOP NUT 10-24
63	598	41	LOCK WASHER #10
62	A-92926-1	41	SCREW #10-24 X 1/2
61			
60			
59			
58			
57			
56	467	14	HHCS 5/16-18 X 3/4
55	458	37	HEX NUT 5/16-18
54	526	17	FLAT WASHER 5/16
53	465	21	HHCS 5/16-18 X 7/8
52	480	35	LOCKWASHER 5/16
51	A-92419	8	NUT RETAINER 5/16-18
ITEM	PART NO	QUAN.	DESCRIPTION

# CONTROL PANEL ASSEMBLY



# CONTROL PANEL ASSEMBLY

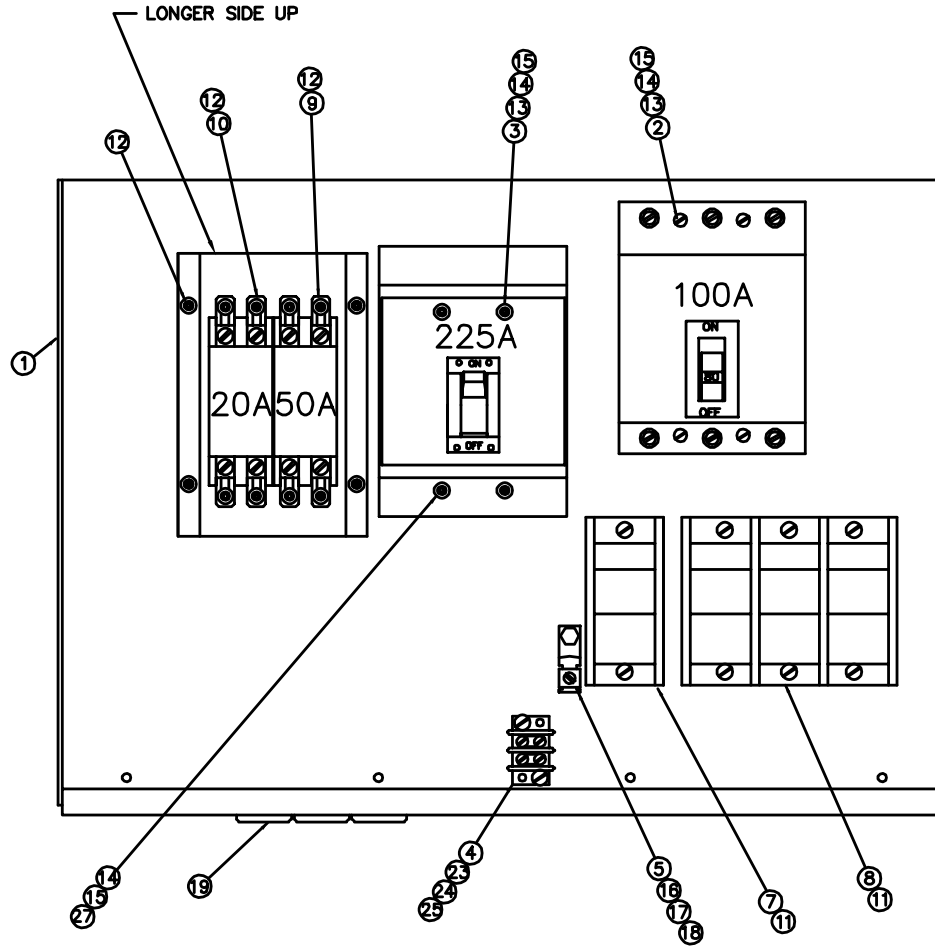




# CONTROL PANEL ASSEMBLY

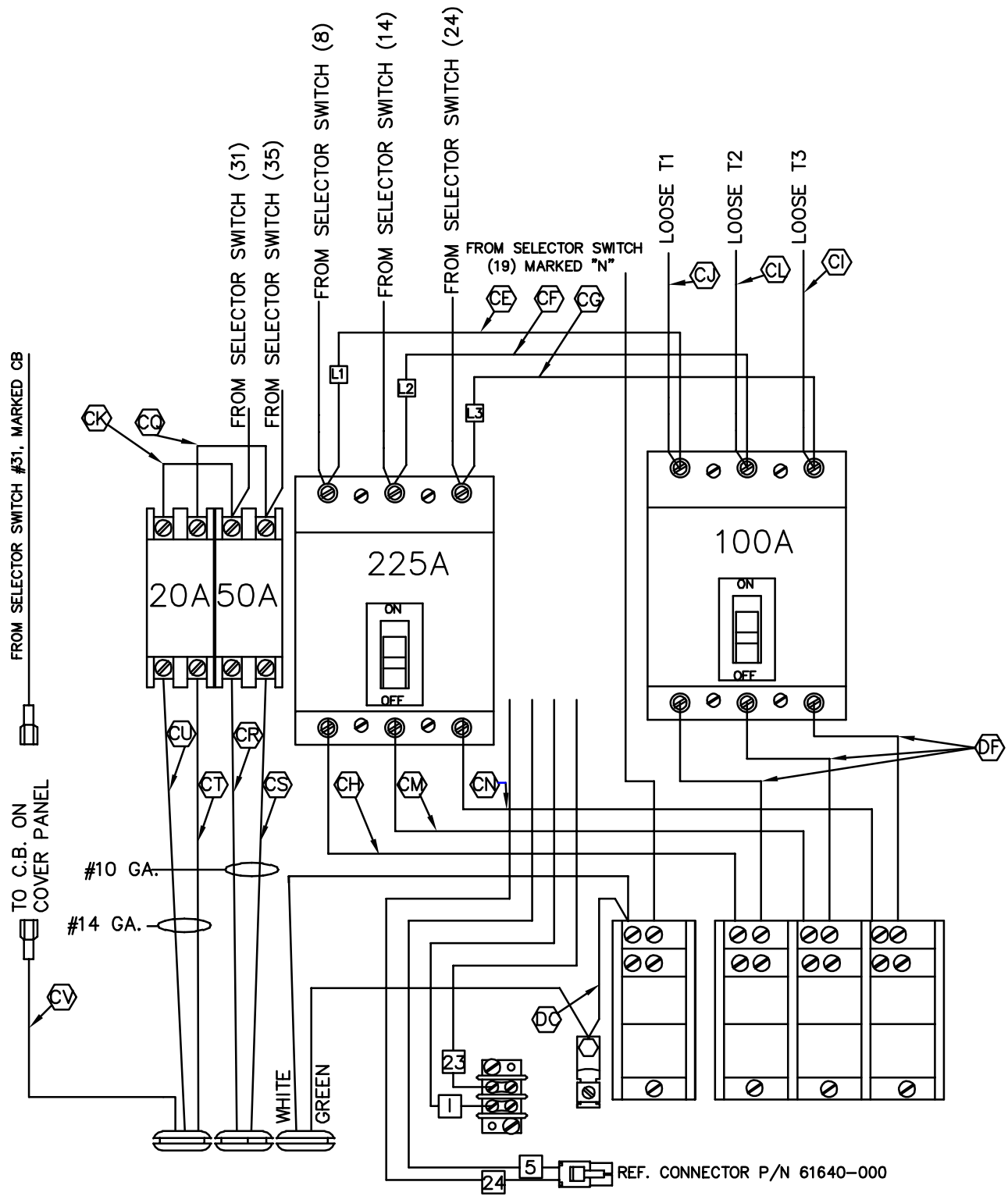
48	96925-003	1	CONNECTOR
47	B-99439-001	1	CONTROL BOX LH
46			
45	C-99660-000	REF	A.C.SCHEMATIC
44	C-99275-002	1	WIRING DIAGRAM
43	24737-000	8	SCREW #10-32 X 1/2
42	7792-000	2	RHMS #6-32 X 5/8
41	51802-000	2	ELASTIC STOPNUT #6-32
40	A-55440-000	18	SELF TAP 1/4
39	21976-000	8	LOCKWASHER #8
38	476-000	9	HHCS 1/4-20 X 5/8
37	4516-000	1	EXT LOCKWASHER 1/4
36	479-000	12	LOCKWASHER 1/4
35	638-000	12	HEX NUT 1/4-20
34	463-000	4	HHCS 1/4-20 X 1/2
33	480-000	6	LOCKWASHER 5/16
32	458-000	6	HEX NUT 5/16-18
31	467-000	6	HHCS 5/16-18 X 3/4
30	A-21698-001	68	SELF TAP #10 (BLK)
29			
28	5113-000	8	HEXNUT #8-32
27			
26	484-000	8	LOCKWASHER #10
25	6402-000	6	BHMS #8-32 X 3/8
24	A-93073-002	2	ROMEX CONNECTOR
23	B-91454-003	4	SPACERS
22	B-99241-002	1	BOTTOM, CIRCUIT BREAKER MOUNTING
21	A-99436-001	1	CONTROL, BOTTOM
20	B-99439-002	1	CONTROL BOX, RH
19	B-99190-001	1	CONTROL FLOOR, UPPER
18	B-99434-002	1	CONTROL CABINET SIDE, LEFT
17	B-99434-003	1	CONTROL CABINET SIDE, RIGHT
16	B-99184-001	1	TOP, CONTROL CABINET
15	B-99198-003	1	COVER
14			
13	A-99197	2	SUPPORT, PANEL
12	A-99242	2	SPLICE
11	A-99210-003	1	SUPPORT, SELECTOR SWITCH
10	A-72190-015	1	ENGINE CONTROL
9	B-59944-001	1	RELAY
8	B-99247-002	REF	D.C.SCHEMATIC
7	A-99280-000	1.50FT	CONTINUOUS GROMMET
6	99436-002	1	CONTROL BOX BACK
5	71234-001	3	CURRENT TRANSFORMER 300/5
4	B-99246-002	1	SUB-ASS'Y CONTROL PANEL
3	B-99258-002	1	SUB-ASS'Y, RECEPTACLE
2	B-99259-003	1	SUB-ASS'Y, CIRCUIT BREAKER COVER
1	B-99257-004	1	SUB-ASS'Y, CIRCUIT BREAKER
ITEM	PART NO	QUAN.	DESCRIPTION

# CIRCUIT BREAKER ASSEMBLY



28			
27	21977-000	2	RHMS 8-32 X 2-1/4
26			
25	394-000	2	NUT
24	22989-000	2	WASHER
23	7792-000	2	SCREW
22			
21			
20			
19	A-56927-000	3	GROMMET
18	439-000	1	HHCS 1/4-20 X 1
17	479-000	2	LOCKWASHER 1/4
16	638-000	2	HEX NUT 1/4 X 20
15	5113-000	8	HEX NUT #8-32
14	6376-000	8	LOCKWASHER #8
13	95832-000	6	RHMS #8-32 X 3 1/4
12	A-21698-001	12	BHMS
11	46796-000	8	PHSMS
10	B-57030-001	1	CIRCUIT BREAKER 20 AMPS
9	B-57030-000	1	CIRCUIT BREAKER 50 AMPS
8	B-97753-007	1	TERMINAL BLOCK 3-POLE
7	B-97753-006	1	TERMINAL BLOCK 1-POLE
6	B-98103-002	1	STANDOFF
5	A-48042-000	1	GROUND LUG
4	A-27403-001	1	TERMINAL STRIP
3	B-81096-006	1	CIRCUIT BREAKER, 3 POLE-240 V. 225 AMP
2	81097-008	1	CIRCUIT BREAKER, 3 POLE-480 V.100 AMP.
1	B-99565-000	1	MOUNTING PLATE, CIRCUIT BREAKER
ITEM	PART NO	QUAN.	DESCRIPTION

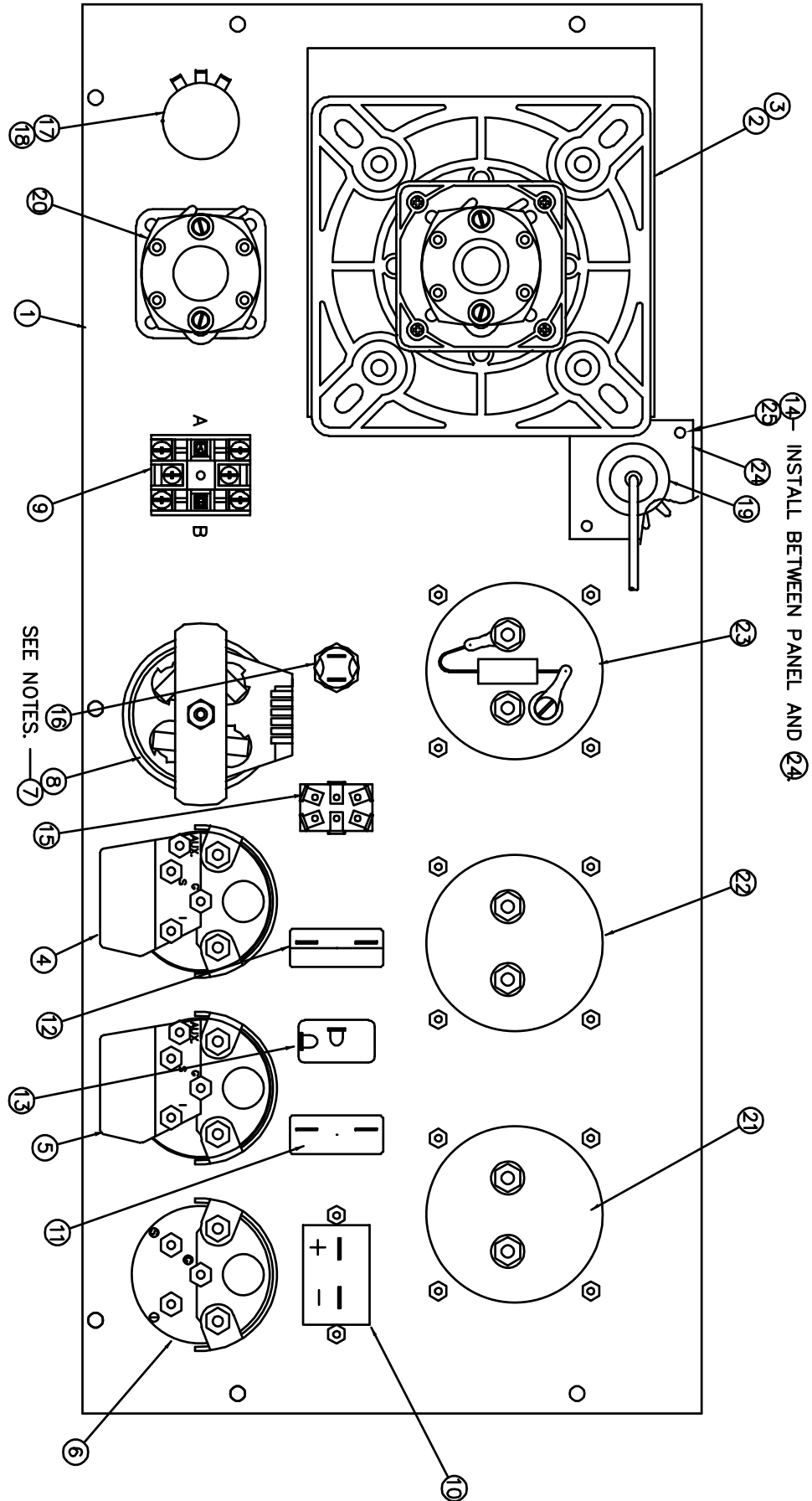
# CIRCUIT BREAKER ASSEMBLY



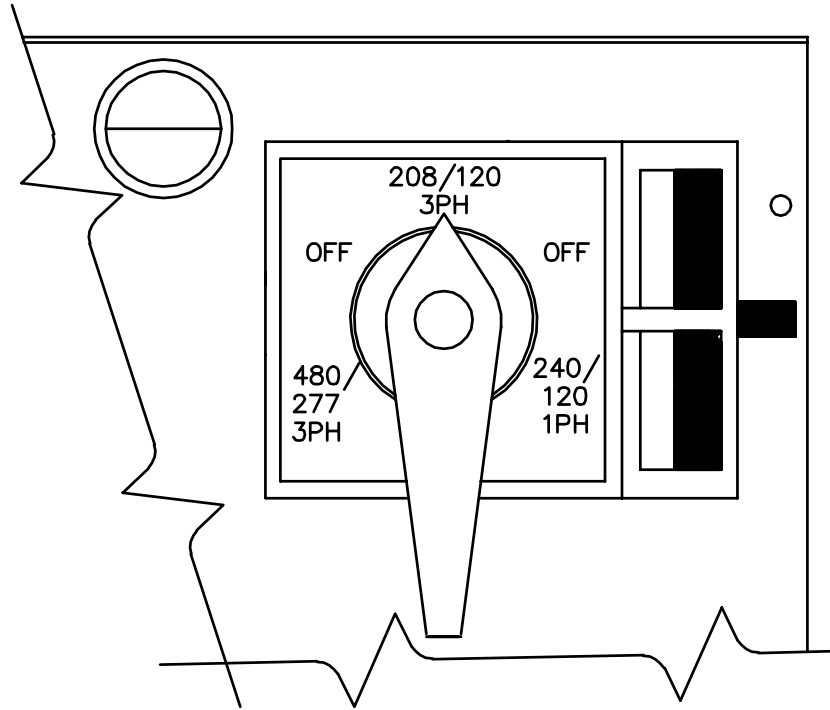
NOTE  
 1. FOR WIRE LIST SEE PRINT 99627-004.

# CONTROL PANEL ASSEMBLY

REAR VIEW OF PANEL AND COMPONENTS



# CONTROL PANEL ASSEMBLY



PARTIAL FRONT VIEW OF PANEL AND SELECTOR SWITCH

NOTE:

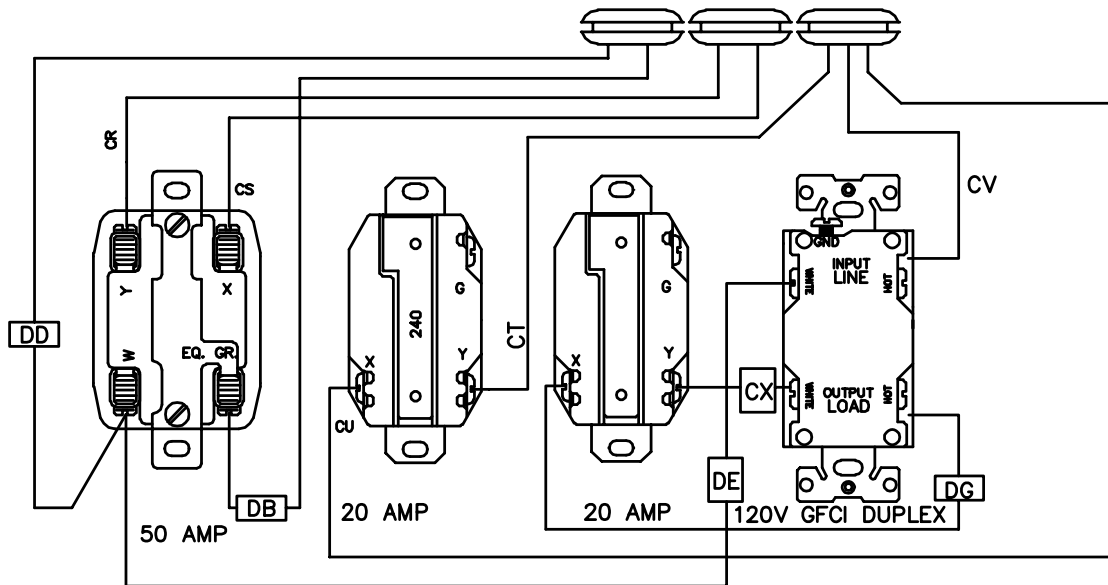
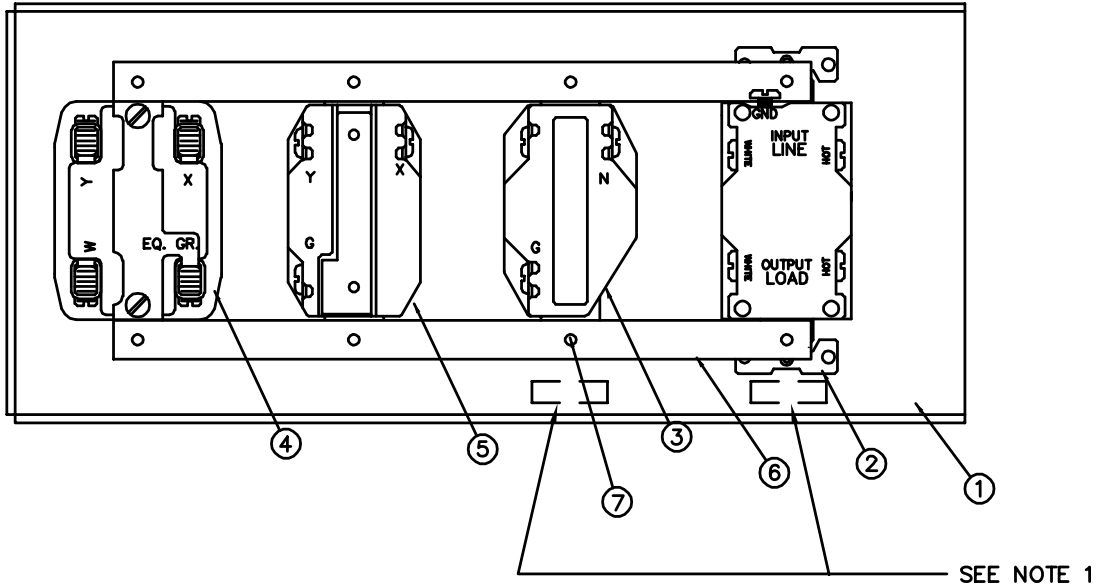
LOOSEN NUT HOLDING BOARD TO BEZEL AND ROTATE THE BOARD 180° AND TIGHTEN NUT THEN MOUNT WITH CLAMP

25	A-21698-001	2	#10 X 3/8 SELF TAPPING SCREW
24	A-99297	1	PILOT LAMP BACKING PLATE
23	A-99272-1	1	FREQUENCY METER
22	A-99271-004	1	A.C. AMMETER
21	A-99270-1	1	A.C. VOLTMETER
20	A-99003	1	SELECTOR SWITCH
19	A-95807	1	LICENSE LIGHT
18	A-94394	1	KNOB
17	A-97517-3	1	POTENTIOMETER
16	A-71444-1	1	SWITCH (LAMP TEST)
15	A-71216-1	1	SWITCH( DPDT)
ITEM	PART NO	QTY.	DESCRIPTION
14	22423-000	2	#10 EXT. TOOTH LOCKWASHER
13	A-71215-001	1	PANEL LIGHT SWITCH
12	B-91286-007	1	5 AMP. CIRCUIT BREAKER
11	B-91286-000	1	15 AMP. CIRCUIT BREAKER
10	A-58166-006	1	RUNNING TIME METER
9	A-94400-002	1	EMERGENCY STOP SWITCH
8	A-98947-000	1	LIGHT CLUSTER CONNECTOR AND LEADS
7	B-98946-001	1	LIGHT CLUSTER
6	A-99268-000	1	D.C. VOLTMETER
5	A-99266-000	1	OIL PRESSURE GAUGE
4	A-99264-000	1	TEMPERATURE GAUGE
3	A-99210-002	1	SELECTOR SWITCH MOUNTING PLATE
2	B-95664-006	1	PREWIRING, SELECTOR SWITCH
1	B-99433-000	1	CONTROL PANEL
ITEM	PART NO	QTY.	DESCRIPTION



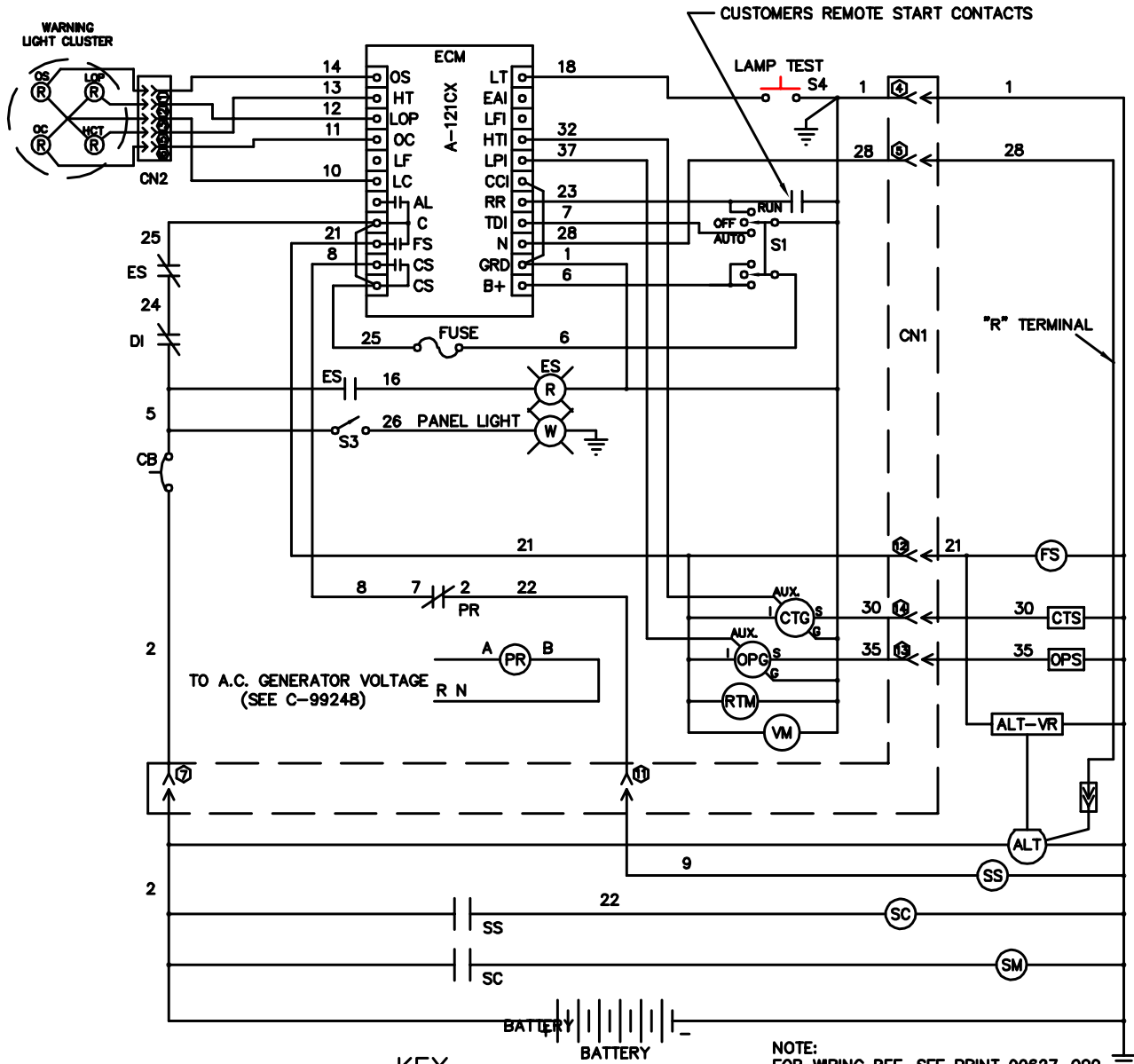
# RECEPTACLE ASSEMBLY

NOTE 1: SAVE "GFCI PROTECTED" LABEL WHICH ACCOMPANIES ITEM ② AND APPLY ONE DECAL BELOW ITEM ③ AND ITEM ②  
SEE PRINT 99627-004 FOR REF.

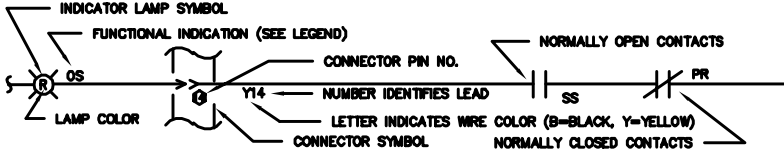


7	A-21698-001	8	#10 SHEET METAL SCREW
6	B-64045-001	2	MOUNTING STRAP
5	A-56281-000	1	RECEPTACLE 20 AMPS 250 V.
4	B-91889-000	1	RECEPTACLE 50 AMPS
3	A-56279-000	1	RECEPTACLE 20 AMPS 125 V.
2	B-15147-002	1	GFCI DUPLEX RECEPTACLE, SEE NOTE 1
1	A-99437-000	1	MOUNTING, RECEPTACLE
ITEM	PART NO	QUAN.	DESCRIPTION

# D.C. SCHEMATIC



NOTE:  
FOR WIRING REF. SEE PRINT 99627-000  
99627-002

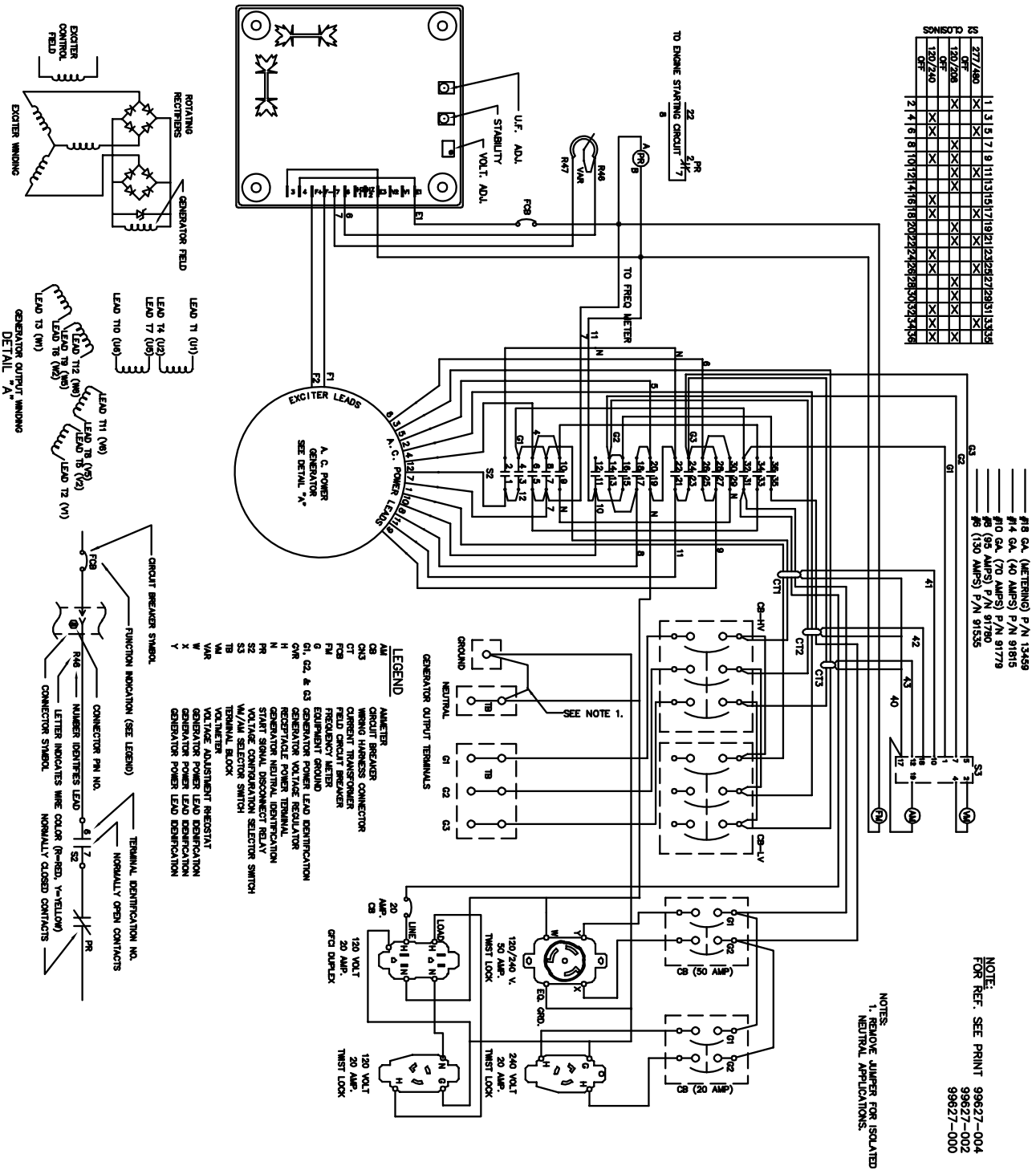


## LEGEND

- |        |                              |     |  |
|--------|------------------------------|-----|--|
| ALT    | ALTERNATOR                   | OPG | OIL PRESSURE GAUGE                         |
| ALT-VR | ALTERNATOR VOLTAGE REGULATOR | OPS | OIL PRESSURE SENDER                        |
| CB     | CIRCUIT BREAKER              | OS  | OVERSPEED INDICATOR LAMP                   |
| CN1    | WIRING HARNESS CONNECTORS    | PR  | PROTECTIVE RELAY, STARTER                  |
| CTG    | COOLANT TEMPERATURE GAUGE    | RTM | RUNNING TIME METER                         |
| CTS    | COOLANT TEMPERATURE SENDER   | S1  | ENGINE START MODE SWITCH                   |
| DI     | DOOR INTERLOCK               | S3  | PANEL ILLUMINATION LIGHT SWITCH            |
| ECM    | ENGINE CONTROL MODULE        | S4  | ENGINE SHUTDOWN INDICATOR LAMP TEST SWITCH |
| ES     | EMERGENCY STOP SWITCH        | SC  | ENGINE STARTER MOTOR SOLENOID              |
| FS     | FUEL RACK SOLENOID           | SS  | PILOT START SOLENOID                       |
| GND    | GROUND (CHASSIS OR FRAME)    | SM  | ENGINE STARTER MOTOR                       |
|        |                              | VM  | D.C. VOLTMETER                             |



# A.C. SCHEMATIC



1	2	3	4	5	6	7	8	9	10	11	12	13	14	15	16	17	18	19	20	21	22	23	24	25	26	27	28	29	30	31	32	
1	X	X	X	X	X	X	X	X	X	X	X	X	X	X	X	X	X	X	X	X	X	X	X	X	X	X	X	X	X	X	X	X
2	X	X	X	X	X	X	X	X	X	X	X	X	X	X	X	X	X	X	X	X	X	X	X	X	X	X	X	X	X	X	X	
3	X	X	X	X	X	X	X	X	X	X	X	X	X	X	X	X	X	X	X	X	X	X	X	X	X	X	X	X	X	X	X	
4	X	X	X	X	X	X	X	X	X	X	X	X	X	X	X	X	X	X	X	X	X	X	X	X	X	X	X	X	X	X	X	
5	X	X	X	X	X	X	X	X	X	X	X	X	X	X	X	X	X	X	X	X	X	X	X	X	X	X	X	X	X	X	X	
6	X	X	X	X	X	X	X	X	X	X	X	X	X	X	X	X	X	X	X	X	X	X	X	X	X	X	X	X	X	X	X	
7	X	X	X	X	X	X	X	X	X	X	X	X	X	X	X	X	X	X	X	X	X	X	X	X	X	X	X	X	X	X	X	
8	X	X	X	X	X	X	X	X	X	X	X	X	X	X	X	X	X	X	X	X	X	X	X	X	X	X	X	X	X	X	X	
9	X	X	X	X	X	X	X	X	X	X	X	X	X	X	X	X	X	X	X	X	X	X	X	X	X	X	X	X	X	X	X	
10	X	X	X	X	X	X	X	X	X	X	X	X	X	X	X	X	X	X	X	X	X	X	X	X	X	X	X	X	X	X	X	
11	X	X	X	X	X	X	X	X	X	X	X	X	X	X	X	X	X	X	X	X	X	X	X	X	X	X	X	X	X	X	X	
12	X	X	X	X	X	X	X	X	X	X	X	X	X	X	X	X	X	X	X	X	X	X	X	X	X	X	X	X	X	X	X	
13	X	X	X	X	X	X	X	X	X	X	X	X	X	X	X	X	X	X	X	X	X	X	X	X	X	X	X	X	X	X	X	
14	X	X	X	X	X	X	X	X	X	X	X	X	X	X	X	X	X	X	X	X	X	X	X	X	X	X	X	X	X	X	X	
15	X	X	X	X	X	X	X	X	X	X	X	X	X	X	X	X	X	X	X	X	X	X	X	X	X	X	X	X	X	X	X	
16	X	X	X	X	X	X	X	X	X	X	X	X	X	X	X	X	X	X	X	X	X	X	X	X	X	X	X	X	X	X	X	
17	X	X	X	X	X	X	X	X	X	X	X	X	X	X	X	X	X	X	X	X	X	X	X	X	X	X	X	X	X	X	X	
18	X	X	X	X	X	X	X	X	X	X	X	X	X	X	X	X	X	X	X	X	X	X	X	X	X	X	X	X	X	X	X	
19	X	X	X	X	X	X	X	X	X	X	X	X	X	X	X	X	X	X	X	X	X	X	X	X	X	X	X	X	X	X	X	
20	X	X	X	X	X	X	X	X	X	X	X	X	X	X	X	X	X	X	X	X	X	X	X	X	X	X	X	X	X	X	X	
21	X	X	X	X	X	X	X	X	X	X	X	X	X	X	X	X	X	X	X	X	X	X	X	X	X	X	X	X	X	X	X	
22	X	X	X	X	X	X	X	X	X	X	X	X	X	X	X	X	X	X	X	X	X	X	X	X	X	X	X	X	X	X	X	
23	X	X	X	X	X	X	X	X	X	X	X	X	X	X	X	X	X	X	X	X	X	X	X	X	X	X	X	X	X	X	X	
24	X	X	X	X	X	X	X	X	X	X	X	X	X	X	X	X	X	X	X	X	X	X	X	X	X	X	X	X	X	X	X	
25	X	X	X	X	X	X	X	X	X	X	X	X	X	X	X	X	X	X	X	X	X	X	X	X	X	X	X	X	X	X	X	
26	X	X	X	X	X	X	X	X	X	X	X	X	X	X	X	X	X	X	X	X	X	X	X	X	X	X	X	X	X	X	X	
27	X	X	X	X	X	X	X	X	X	X	X	X	X	X	X	X	X	X	X	X	X	X	X	X	X	X	X	X	X	X	X	
28	X	X	X	X	X	X	X	X	X	X	X	X	X	X	X	X	X	X	X	X	X	X	X	X	X	X	X	X	X	X	X	
29	X	X	X	X	X	X	X	X	X	X	X	X	X	X	X	X	X	X	X	X	X	X	X	X	X	X	X	X	X	X	X	
30	X	X	X	X	X	X	X	X	X	X	X	X	X	X	X	X	X	X	X	X	X	X	X	X	X	X	X	X	X	X	X	
31	X	X	X	X	X	X	X	X	X	X	X	X	X	X	X	X	X	X	X	X	X	X	X	X	X	X	X	X	X	X	X	
32	X	X	X	X	X	X	X	X	X	X	X	X	X	X	X	X	X	X	X	X	X	X	X	X	X	X	X	X	X	X	X	

# WIRING DIAGRAM

NOTE:  
FOR WIRING REF. SEE PRINTS 98937-000  
98937-004  
98937-004

