

PARTS LIST

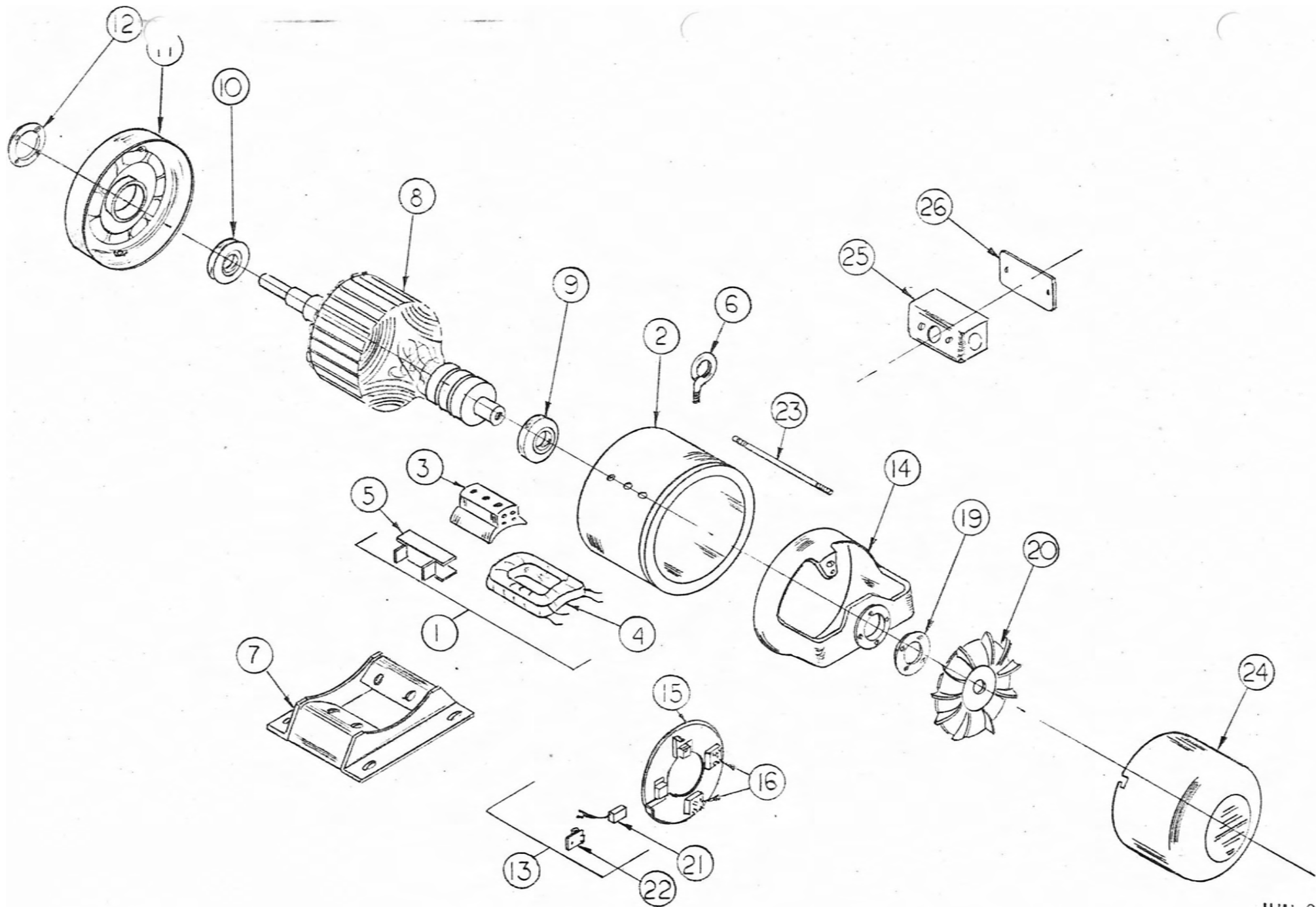
PL-01271

FM4V4-A

<u>FIND NO.</u>	<u>PART NO.</u>	<u>DESCRIPTION</u>	<u>REQ/UNIT</u>
1	G-5410-1	Field Frame Assy	1
2	S-6352	Field Frame	1
3	G-5241-1	Field Pole	4
4	H-985	Field Coil	Set of 4
5	J-530	Coil Shield	8
6	S-859	Lift Ring	1
7	G-4649	Base Assy	1
8	G-5137-12	Armature Assy	1
9	D-8	Bearing (Ring End)	1
10	D-4	Bearing (Drive End)	1
11	I-342	Drive End Bell	1
12	W-43	Bearing Retainer	1
13	G-5242-2	End Bell Assy W/ Brush Ring	1
14	I-773-4	End Bell	1
15	G-5240	Brush Ring Assy	1
16	G-5340	Rectifier Assy (Pos.)	1
17	G-5341	Rectifier Assy (Neg.)	1
18	G-5342	Rectifier Assy (Shunt)	1
19	S-6242	Bearing Retainer	1
20	A-606-1	Fan	1
21	Y-51	Brush	3
22	G-3422	Brush Spring	3
23	S-1755	Stud	2
24	S-6151-1	End Hood	1
25	V-1039	Handy Box	1
26	EE-910	Cover	1
27	S-6681	Shim - Generator Base	2

Wiring Diagram E-7389

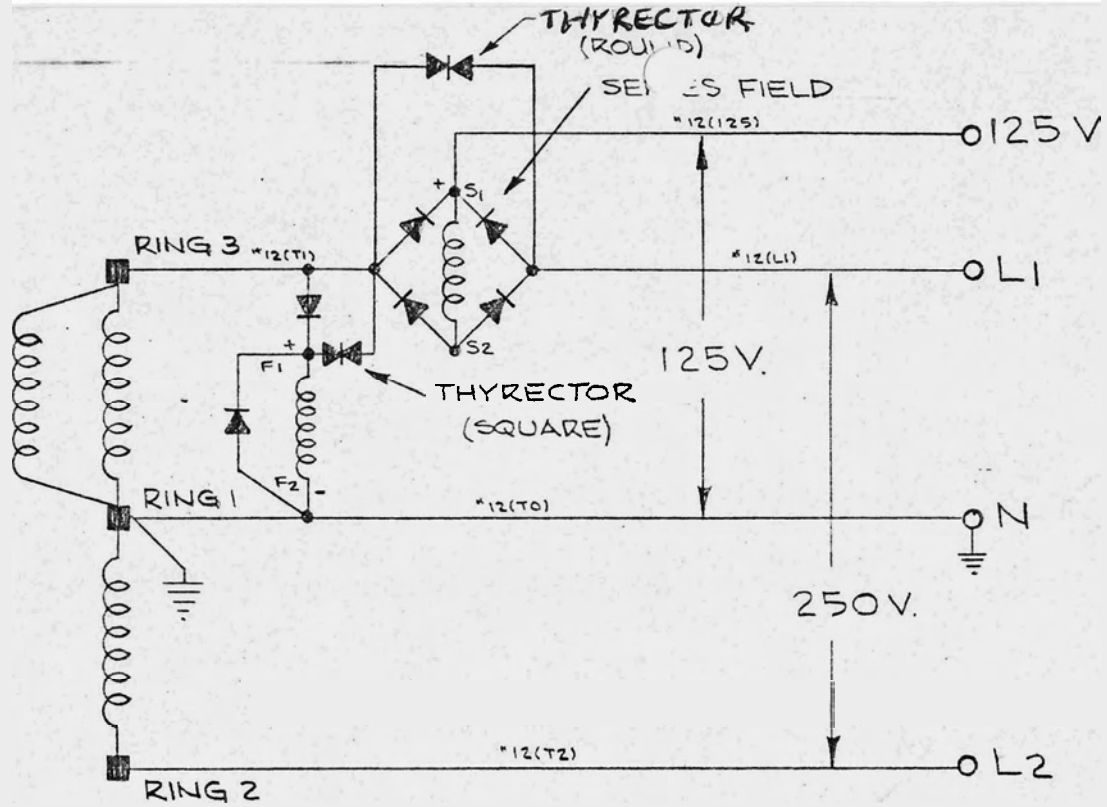
Parts Drawing E-8479



JUN 27 19

E-8479

ARMATURE



CHANGE	WAS ORIGINALLY	DATE	CHK'D	CHG. REQUEST	NO. REQ'D.	MICROFILM DATA
A	ADDED COLOR CODE	7-29-70	JFP			
TOLERANCE ON DIMENSIONS NOT OTHERWISE SPECIFIED				DECIMAL ±	REMOVE ALL BURRS BREAK ALL SHARP MACHINED EDGES	MATERIAL ~
				FRACTIONAL ±		
				ANGULAR ±		

CONNECTION DIAGRAM	
SCALE ~	MODEL NO. CM4L4-A
DATE 4-19-67	PART NO. Z-1858
DWN. T.C.G.	CHK'D
WINPOWER MFG. CO. NEWTON, IOWA	