

XXX-88998-B

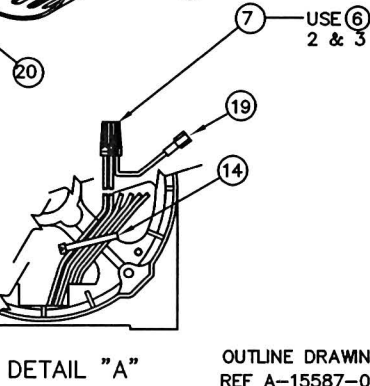
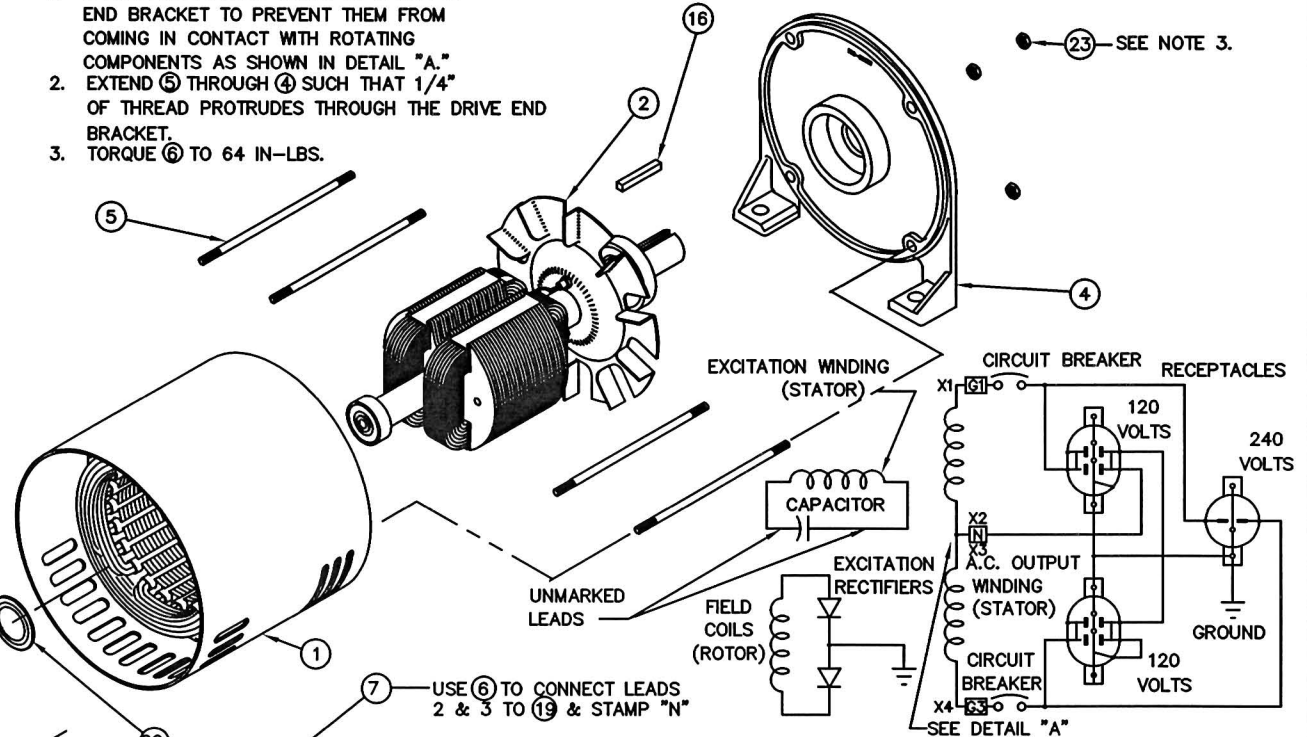
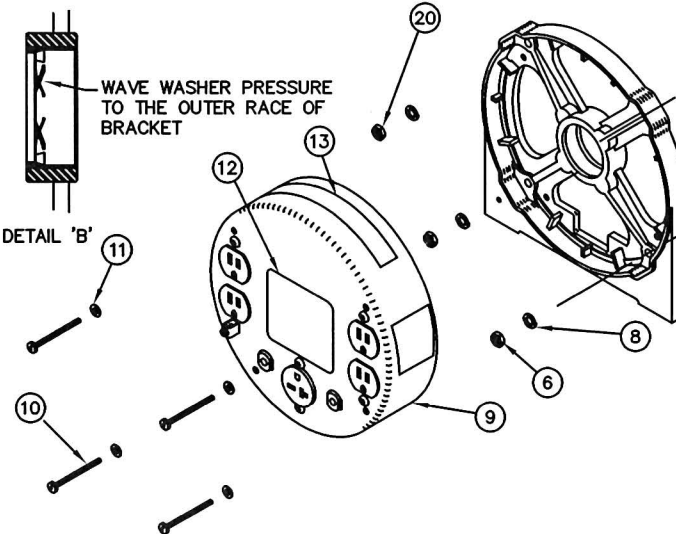
PART NO	MODEL	ITEM (1)	ITEM (4)	ITEM (9)	ITEM (8)	QTY. (19)
B-15588-000	TB4000C	B-15582-000	B-15577-000	B-15049-001	60701-108	NONE
B-15588-001	TB4000C	B-15582-000	B-15577-000	B-15049-004	60701-113	NONE
B-15588-002	TB4000C/B	B-15621-000	B-15577-001	B-15049-004	60701-113	1
B-15588-003	TB4000C/C	B-15621-000	B-15577-001	B-16342-001	60701-113	1

REVISION RECORD					
ISSUE	E.C.O. NO.	DESCRIPTION	DATE	BY	APPD
13	032-03	ADDED 15588-003	3/4/03	J.L.	SV
14	065-03	15588-003 ITEM 9 WAS 15049-006.	7/22/03	RH	RH
15	174-06	(2) WAS QTY 4	10/05/06	PJT	MTH
16		ITEM 12 WAS A-63966-003	11/28/06	BMK	

ITEM	PART NO	QUAN.	DESCRIPTION
1	SEE TABLE	1	STATOR ASSEMBLY
2	B-15581-000	1	ROTOR ASSEMBLY
3	A-15561-000	1	BEARING BRACKET ASSEMBLY
4	SEE TABLE	1	DRIVE END BRACKET ASSEMBLY
5	B-15068-015	4	1/4-20 THROUGH BOLT - 9.75" LONG
6	638-000	4	1/4 X 20 HEXNUT
7	A-96936-008	1	WIRE NUT
8	479-000	8	1/4 SPLIT LOCKWASHER
9	SEE TABLE	1	END COVER ASSEMBLY
10	A-15013-000	4	10-32 X 3.5 RD. HD. MACHINE SCREW
11	21975-000	4	#10 INT. TOOTH LOCKWASHER
12	A-63966-007	1	NAMEPLATE
13	B-15209-000	1	DANGER DECAL SET, USE B-15209-003 ONLY
14	A-49975-011	1	CABLE TIE
15	B-100,047-686	1	SHIPPING CARTON
16	A-44208-000	1	.25" X 1.75" SQUARE KEY
17	60706-098	1	OPERATORS MANUAL
18	SEE TABLE	1	PARTS LIST
19	A-91845-012	SEE TABLE	LEADWIRE ASSEMBLY
20	A-16174-000	1	WAVE WASHER
21	100054-644	1	INNER PACK LINER
22	24049-000	2	CARRIAGE BOLT (NOT SHOWN)
23	16248-000	4	1/4-20 NC FLANGE NUT

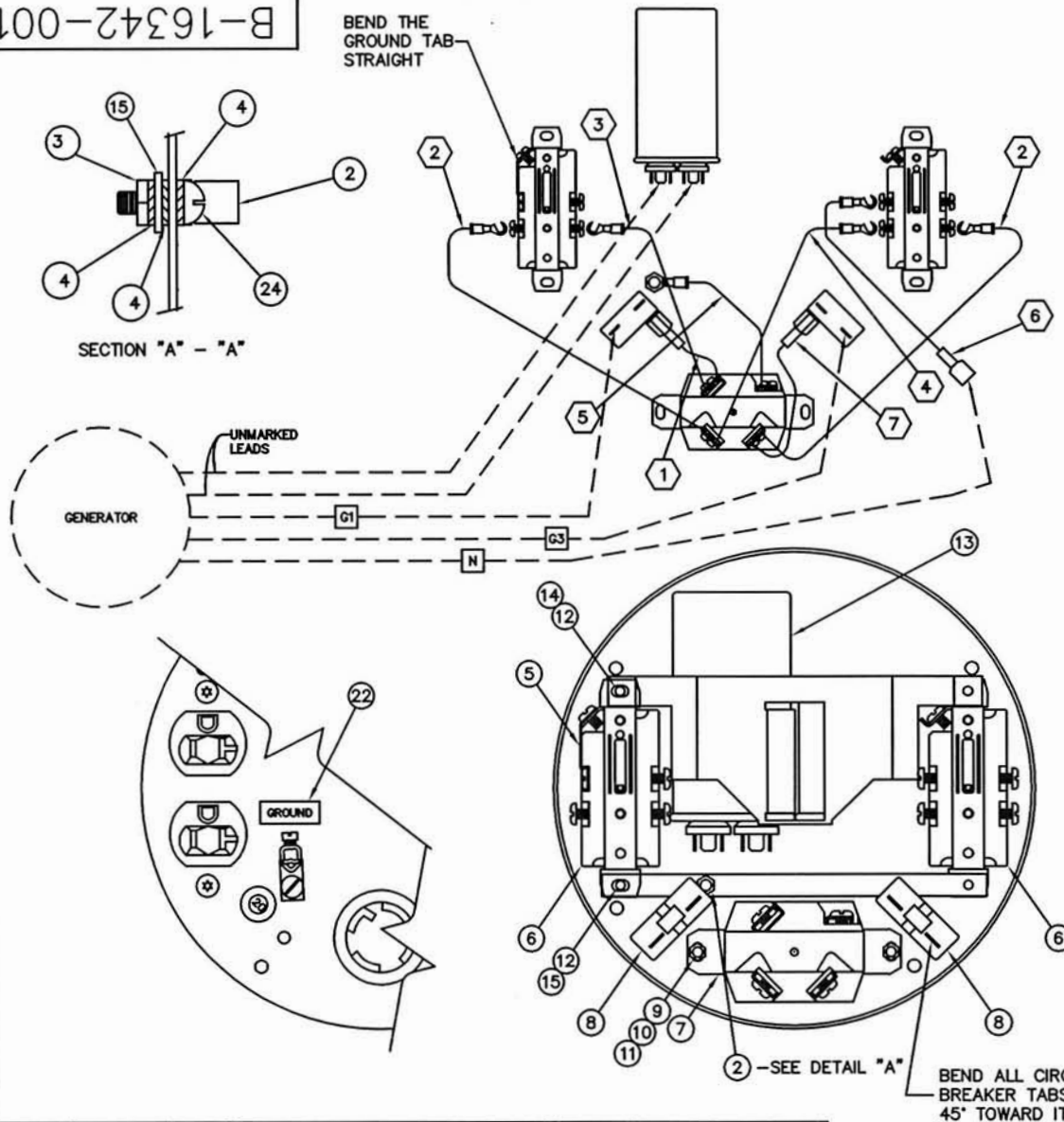
NOTES:

1. SECURE GENERATOR LEADS TO SPOKE OF END BRACKET TO PREVENT THEM FROM COMING IN CONTACT WITH ROTATING COMPONENTS AS SHOWN IN DETAIL "A."
2. EXTEND (5) THROUGH (4) SUCH THAT 1/4" OF THREAD PROTRUDES THROUGH THE DRIVE END BRACKET.
3. TORQUE (6) TO 64 IN-LBS.



UNLESS OTHERWISE SPECIFIED		MACHINED SURFACE TEXTURE		ALL DIMENSIONS GIVEN IN INCHES				
FRACTIONS ±		ANGULAR		WORK TO DIMENSIONS				
1. PLACE DEC. ± .1		± 1.5°		- DO NOT SCALE -				
2. PLACE DEC. ± .031								
3. PLACE DEC. ± .005								
THIS DRAWING CONTAINS PROPRIETARY INFORMATION BELONGING TO WINCO. UNAUTHORIZED USE IS PROHIBITED.	DRAWN BY	DATE	CHK'D BY	DATE	APPD BY	DATE	SCALE	
	D.M.W.	7-24-96					1"=4"	
	MATERIAL:							
	FINISH	TITLE		GENERATOR COMPLETE				
ASSY	SEE TABLE		PART NO. B-15588-XXX					
MODEL	SEE TABLE		WINCO INCORPORATED					

B-16342-001



#	ITEM	QTY	LEAD WIRE		"A" END		"B" END		REMARKS
			PART NO.	LENGTH	TERM. LUG	STRIP	TERM. LUG	STRIP	
	1	1	91815	3.5"	61898-000	3/8"	21850-002	1/2"	
	2	2	91815	6.25"	21850-002	3/8"	21850-002	1/2"	
	3	1	91815	4.50"	21850-002	3/8"	21850-002	1/2"	
	4	1	91815	5.50"	21850-002	3/8"	21850-002	1/2"	
	5	1	59341	4.0"	4158-000	3/8"	21850-002	1/2"	
	6	1	91815	4.0"	21850-002	3/8"	48602-004	3/8"	
	7	1	91815	4.50"	61898.000	3/8"	21850-002	1/2"	

24	419-000	1	#10-24 X 1/2 ROUND HEAD SCREW
23	A-49975-010	2	CABLE TIE
22	A-15750-000	1	DECAL, GROUND
21	4158-000	1	TERMINAL LUG
20	B-21850-002	12	TERMINAL LUG
19	A-61898-000	2	TERMINAL LUG
18	B-48602-004	1	TERMINAL LUG
17	A-59341-000	.375 FT	LEAD WIRE, #14 GA. GREEN
16	B-91815-000	2.44 FT	LEAD WIRE, #14 GA. BLACK
15	B-64045-029	1	MOUNTING STRAP
14	A-15088-000	1	CAPACITOR STRAP
13	A-15051-000	1	CAPACITOR
12	A-21698-001	4	TORX SHEET METAL SCREW, #10 x 3/8
11	21976-000	2	LW, #8 EXTERNAL TOOTH
10	5113-000	2	HN #8-32
9	A-6402-001	2	BHMS #8-32 x 3/8
8	B-91286-001	2	CIRCUIT BREAKER, 20 AMP
7	A-97360-000	1	30 AMP, 120/240 RECEPTACLE (L14-30)
6	A-50766-000	2	20 AMP, 120 VOLT DUPLEX RECEPTACLE
5	A-41387-009	1	GROUND STRAP
4	21975-000	3	LW, #10 EXTERNAL TOOTH
3	456-000	1	HN #10-24
2	A-48042-001	1	GROUND LUG
1	A-15050-002	1	END COVER

ITEM	PART NO	QTY	DESCRIPTION
UNLESS OTHERWISE SPECIFIED			
FRACTIONS ±		ANGULAR	MACHINED SURFACE TEXTURE
1. PLACE DEC. ± .1		± 1.5°	ALL DIMENSIONS GIVEN IN INCHES
2. PLACE DEC. ± .031			WORK TO DIMENSIONS
3. PLACE DEC. ± .005			- DO NOT SCALE -

THIS DRAWING CONTAINS PROPRIETARY INFORMATION BELONGING TO WINCO, UNAUTHORIZED USE IS PROHIBITED.	DRAWN BY	DATE	CHKD BY	DATE	APP'D BY	DATE	SCALE	
	RH	7/22/03			RH	7/22/03	1=2	
	MATERIAL: -----							
	FINISH	-----	TITLE					
ASSY	15588-003	END COVER ASSEMBLY						
MODEL	TB4000C/C	PART NO.						
							B-16342-001	

ISSUE	E.C.O. NO.	DESCRIPTION	DATE	BY	APPD
5	107-07	ITEM (2) WAS A-64833-000, ADDED ITEM (24)	7-2-07	E.F.	PJT
REVISION RECORD					