

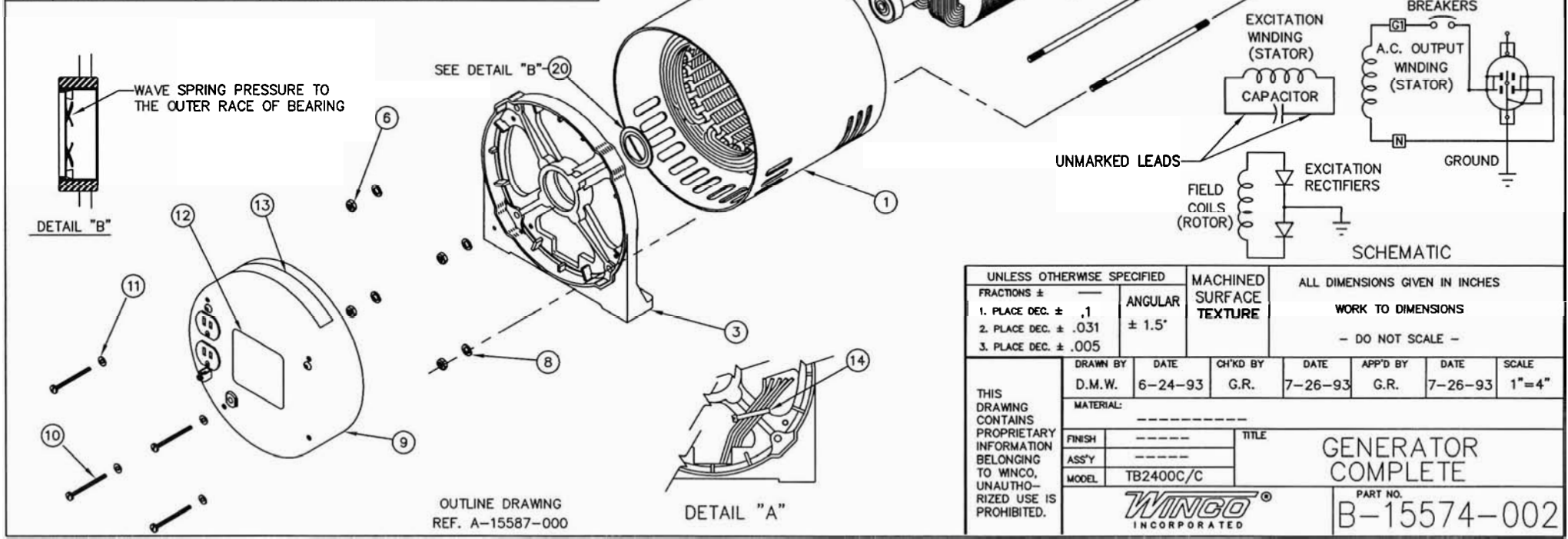
B-15574-002

ITEM	PART NO	QUAN.	DESCRIPTION
1	B-15572-000	1	STATOR ASSEMBLY
2	B-15570-000	1	ROTOR ASSEMBLY
3	A-15561-000	1	BEARING BRACKET ASSEMBLY
4	B-15577-001	1	DRIVE END BRACKET ASSEMBLY
5	B-15068-003	4	1/4-20 THROUGH BOLT
6	638-000	4	1/4-20 HEXNUT
7	100054-644	1	INNER PACK LINER
8	479-000	7	1/4 SPLIT LOCKWASHER
9	B-15596-001	1	END COVER ASSEMBLY
10	A-15013-000	4	10-32 X 3.5 RD. HD. MACHINE SCREW
11	21975-000	4	#10 INT. TOOTH LOCKWASHER
12	A-63966-003	1	NAMEPLATE
13	B-15209-000	1	DANGER DECAL SET, USE B-15209-003 ONLY
14	A-49975-011	1	CABLE TIE
15	A-44208-000	1	.25" X 1.75" SQUARE KEY
16	B-100,047-686	1	SHIPPING CARTON
17	60706-098	1	OPERATORS MANUAL
18	60701-113	1	PARTS LIST
19	24049-000	4	CARRIAGE BOLT (NOT SHOWN)
20	A-16174-000	1	WAVE WASHER
21	16248-000	4	1/4-20 NC FLANGE NUTS

NOTE:

- SECURE GENERATOR LEADS TO SPOKE OF END BRACKET TO PREVENT THEM FROM COMING IN CONTACT WITH ROTATING COMPONENTS AS SHOWN IN DETAIL "A"
2. EXTEND 5 THROUGH 4 SUCH THAT 1/4" OF THREAD IS EXPOSED ON THE BACK SIDE OF THE DRIVE BRACKET ASSEMBLY.
3. TORQUE ⑥ TO 64 IN-LBS

REVISION RECORD					
ISSUE	E.C.O. NO.	DESCRIPTION	DATE	BY	APPR.
4	232-96	(3) WAS 15015-4, ADDED (20)			
5	291-99	(12) WAS -000	11-04-99	BN	SV
6		(6) WAS QTY 8, ADDED (21)	6-30-00	BN	



OUTLINE DRAWING
REF. A-15587-000

DETAIL "A"

UNLESS OTHERWISE SPECIFIED		MACHINED SURFACE TEXTURE		ALL DIMENSIONS GIVEN IN INCHES			
FRACTIONS ±		ANGULAR ± 1.5°		WORK TO DIMENSIONS			
1. PLACE DEC. ± .1				- DO NOT SCALE -			
2. PLACE DEC. ± .031							
3. PLACE DEC. ± .005							
DRAWN BY	DATE	CHK'D BY	DATE	APP'D BY	DATE	SCALE	
D.M.W.	6-24-93	G.R.	7-26-93	G.R.	7-26-93	1"=4"	
MATERIAL:		TITLE		GENERATOR COMPLETE			
FINISH:		MODEL		PART NO.			
ASS'Y:		TB2400C/C		B-15574-002			
MODEL:		WINGO INCORPORATED					