

Kawasaki

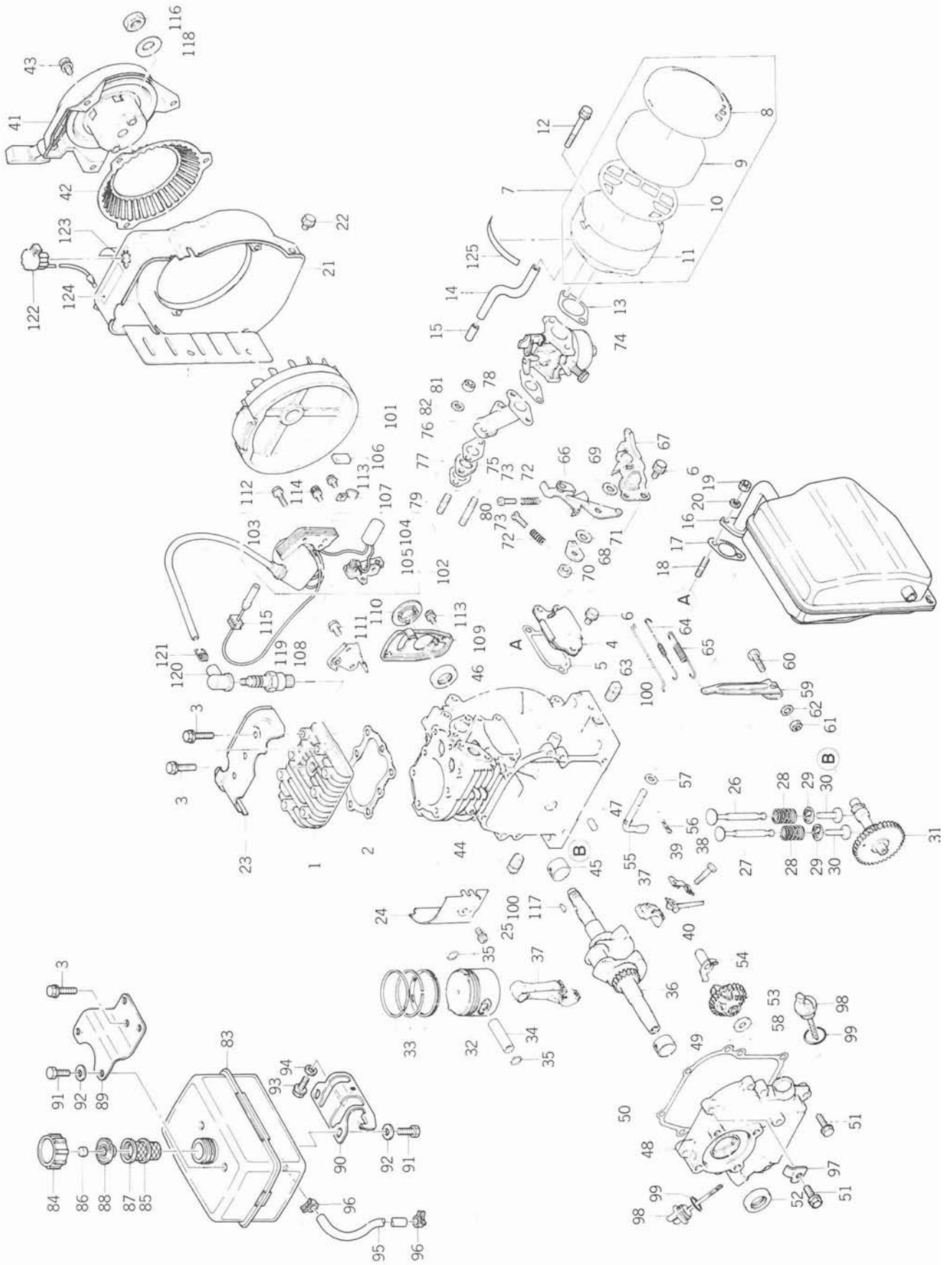
Parts List

FA-76 D (314584A)

4 cycle air-cooled
gasoline engine

4 KF53 KF64 KF81 KF100 KF150
34 KF53 KF64 KF81 KF100 KF15
F34 KF53 KF64 KF81 KF100 KF1
KF34 KF53 KF64 KF81 KF100 KI
4 KF34 KF53 KF64 KF81 KF100 I
24 KF34 KF53 KF64 KF81 KF100
F24 KF34 KF53 KF64 KF81 KF10
KF24 KF34 KF53 KF64 KF81 KF
) KF24 KF34 KF53 KF64 KF81 K
50 KF24 KF34 KF53 KF64 KF81
'150 KF24 KF34 KF53 KF64 KF8
[F150 KF24 KF34 KF53 KF64 KF
KF150 KF24 KF34 KF53 KF64 K
0 KF150 KF24 KF34 KF53 KF64

FA76D (314584A)



FA76D (314584A)

| Ref. No. | Part No. | Part Name | Q'ty | Remarks |
|----------|----------------|------------------------|------|------------|
| 1 | 314501-1111A | HEAD, cylinder | 1 | |
| 2 | 314501-1121A | GASKET, head | 1 | |
| 3 | 186G0640 | BOLT (6 X 40) | 8 | |
| 4 | 314501-1231B | COVER, inspection | 1 | |
| 5 | 314501-1232A | GASKET | 1 | |
| 6 | 186B0612 | BOLT (6 X 12) | 3 | |
| 7 | 314599-1310B | AIR CLEANER ASS'Y | 1 | |
| 8 | 312707-1328-00 | • COVER, air cleaner | 1 | |
| 9 | 312705-1312-00 | • ELEMENT | 1 | |
| 10 | 3142YA-1318A | • PLATE, air cleaner | 1 | |
| 11 | 314599-1311A | • CASE, air cleaner | 1 | |
| 12 | 186G0665 | BOLT (6 X 65) | 2 | |
| 13 | 314599-1332B | GASKET | 1 | |
| 14 | 702A071000 | TUBE, rubber | 1 | 1 = 115 mm |
| 15 | 314401-1341A | PIPE | 1 | |
| 16 | 314584-1410A | MUFFLER ASS'Y | 1 | |
| 17 | 395000-1442A | GASKET | 1 | |
| 18 | 171G0616 | STUD | 2 | |
| 19 | 311B0600 | NUT (6 mm) | 2 | |
| 20 | 410B0600 | WASHER | 2 | |
| 21 | 314584-1611C | CASE, spiral | 1 | |
| 22 | 186B0610 | BOLT (6 X 10) | 3 | |
| 23 | 314584-1631A | COVER, cylinder head | 1 | |
| 24 | 314501-1632A | COVER, cylinder | 1 | |
| 25 | 241B0510 | SCREW (5 X 10) | 1 | |
| 26 | 314501-2111B | VALVE, inlet | 1 | |
| 27 | 314501-2112A | VALVE, exhaust | 1 | |
| 28 | 314501-2113A | SPRING, valve | 2 | |
| 29 | 314501-2116A | SEAT, spring | 2 | |
| 30 | 314501-2211A | TAPPET | 2 | |
| 31 | 314501-2311B | GEAR, cam | 1 | |
| 32 | 314501-3111A | PISTON | 1 | |
| 33 | 314598-3010B | PISTON RING SET | 1 | |
| 34 | 314501-3121A | PIN, piston | 1 | |
| 35 | 314501-3122A | RING, snap | 2 | |
| 36 | 314501-3211A | SHAFT, crank | 1 | |
| 37 | 314501-3240A | CONNECTING ROD ASS'Y | 1 | |
| 38 | 314501-3245A | • BOLT, connecting rod | 2 | |
| 39 | 314501-3248A | WASHER, lock | 1 | |
| 40 | 314501-3249A | ARM, splash | 1 | |

FA76D (314584A)

| Ref. No. | Part No. | Part Name | Q'ty | Remarks |
|----------|--------------|----------------------|------|--------------|
| 41 | 314501-3430A | RECOIL STARTER ASS'Y | 1 | See Fig. R-1 |
| 42 | 314599-1650A | SCREEN | 1 | |
| 43 | 187B0610 | BOLT (6 X 10) | 3 | |
| 44 | 314501-4110B | CRANK CASE ASS'Y | 1 | |
| 45 | 314501-4211B | • BEARING, plain | 1 | |
| 46 | 314501-4231A | SEAL, oil | 1 | |
| 47 | 551A0612 | PIN, dowel | 2 | |
| 48 | 314501-4120A | SIDE BASE ASS'Y | 1 | |
| 49 | 314501-4211B | BEARING, plain | 1 | |
| 50 | 314501-4124A | GASKET | 1 | |
| 51 | 186B0622 | BOLT (6 X 22) | 6 | |
| 52 | 314501-4231A | SEAL, oil | 1 | |
| 53 | 314501-5110A | GOVERNOR ASS'Y | 1 | |
| 54 | 314401-5121A | SLEEVE, governor | 1 | |
| 55 | 314501-5122C | TIP, governor | 1 | |
| 56 | 554A0600 | PIN, snap | 1 | |
| 57 | 410B0600 | WASHER | 1 | |
| 58 | 314401-5135A | WASHER | 1 | |
| 59 | 314584-5210A | ARM, governor | 1 | |
| 60 | 112B0625 | • BOLT (6 X 25) | 1 | |
| 61 | 311B0600 | • NUT (6 mm) | 1 | |
| 62 | 411B0600 | • WASHER | 1 | |
| 63 | 314599-5231C | LINK, governor | 1 | |
| 64 | 314599-5232C | SPRING, link | 1 | |
| 65 | 314501-5314C | SPRING, governor | 1 | |
| 66 | 314501-5311A | LEVER, control | 1 | |
| 67 | 314501-5335B | BRACKET | 1 | |
| 68 | 314501-5389A | PLATE | 1 | |
| 69 | 314401-5383A | WASHER | 1 | |
| 70 | 314401-5385A | NUT | 1 | |
| 71 | 314401-5388A | SPRING | 2 | |
| 72 | 314401-5321B | SPRING | 2 | |
| 73 | 214B0420A | SCREW (4 X 20) | 2 | |
| 74 | 314599-6100D | CARBURETOR ASS'Y | 1 | See Fig. C-1 |
| 75 | 314599-6181A | INSULATOR | 1 | |
| 76 | 314599-6182C | PIPE, inlet | 1 | |
| 77 | 314501-6184A | GASKET | 2 | |
| 78 | 314599-6185B | GASKET | 1 | |
| 79 | 171G0620 | STUD | 1 | |
| 80 | 171G0635 | STUD | 1 | |

FA76D (314584A)

| Ref. No. | Part No. | Part Name | Q'ty | Remarks |
|----------|----------------|------------------------|------|------------|
| 81 | 311B0600 | NUT (6 mm) | 2 | |
| 82 | 411B0600 | WASHER | 2 | |
| 83 | 314599-6610B | FUEL TANK ASS'Y | 1 | |
| 84 | 314499-6641D | CAP, tank | 1 | |
| 85 | 314499-6643A | • GASKET | 1 | |
| 86 | 318292-6656-00 | • BREATHER, cap | 1 | |
| 87 | 314499-6661A | • STRAINER, fuel | 1 | |
| 88 | 311901-6663B | • GASKET | 1 | |
| 89 | 314584-6711A | BRACKET, tank | 1 | |
| 90 | 314584-6712A | BRACKET, tank | 1 | |
| 91 | 314499-6729A | BOLT | 4 | |
| 92 | 314401-6681A | WASHER | 4 | |
| 93 | 156G0616 | BOLT (6 X 16) | 1 | |
| 94 | 312750-2383-00 | WASHER | 1 | |
| 95 | 705A041000 | TUBE, braid | 1 | 1 = 300 mm |
| 96 | 313679-1532-00 | CLIP | 2 | |
| 97 | 314599-6825A | CLAMP | 1 | |
| 98 | 314401-7411A | GAUGE, oil | 2 | |
| 99 | 670B2015 | O-RING | 2 | |
| 100 | 314401-7441B | PLUG, drain | 2 | |
| 101 | 314501-8111A | FLYWHEEL | 1 | |
| 102 | 314501-8103A | IGNITION COIL ASS'Y | 1 | |
| 103 | 314501-8123A | • COIL, ignition | 1 | |
| 104 | 314401-8436A | • CONDENSER | 1 | |
| 105 | 314401-8440A | • BREAKER, contact | 1 | |
| 106 | 314401-8142A | BRUSH | 1 | |
| 107 | 314401-8129A | CLAMP | 1 | |
| 108 | 314501-8137A | BRACKET | 1 | |
| 109 | 314501-8172A | COVER | 1 | |
| 110 | 314501-8414A | RING | 1 | |
| 111 | 131B0510 | BOLT (5 X 10) | 1 | |
| 112 | 131B0520 | BOLT (5 X 20) | 2 | |
| 113 | 241B0408 | SCREW (4 X 8) | 3 | |
| 114 | 242B0410A | SCREW (4 X 10) | 1 | |
| 115 | 314401-8164A | GROMMET | 1 | |
| 116 | 315G1200 | NUT (12 mm) | 1 | |
| 117 | 312750-2371-00 | KEY | 1 | |
| 118 | 314501-3482A | WASHER | 1 | |
| 119 | 314401-8410B | PLUG, spark (NGK BM6A) | 1 | |
| 120 | 317270-8418A | CAP, plug | 1 | |

FA76D (314584A)

| Ref. No. | Part No. | Part Name | Q'ty | Remarks |
|----------|--------------|-------------|------|---------|
| 121 | 317270-8419A | SPRING | 1 | |
| 122 | 314401-8511B | SWITCH | 1 | |
| 123 | 314501-0811A | LABEL, mark | 1 | ** |
| 124 | 314584-0817A | LABEL | 1 | ** |
| 125 | 314584-0827A | LABEL | 1 | ** |

Fig. C-1 CARBURETOR

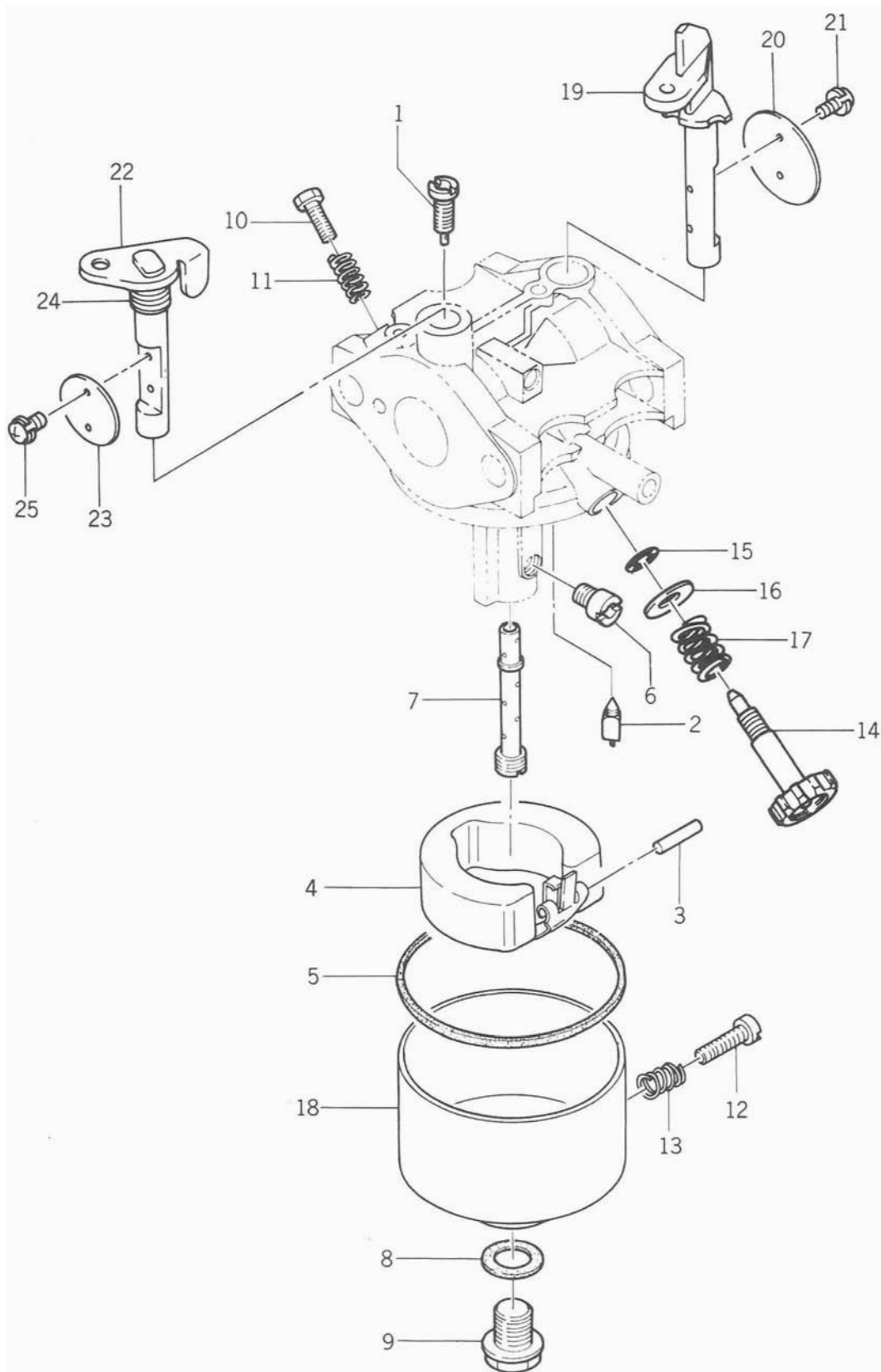
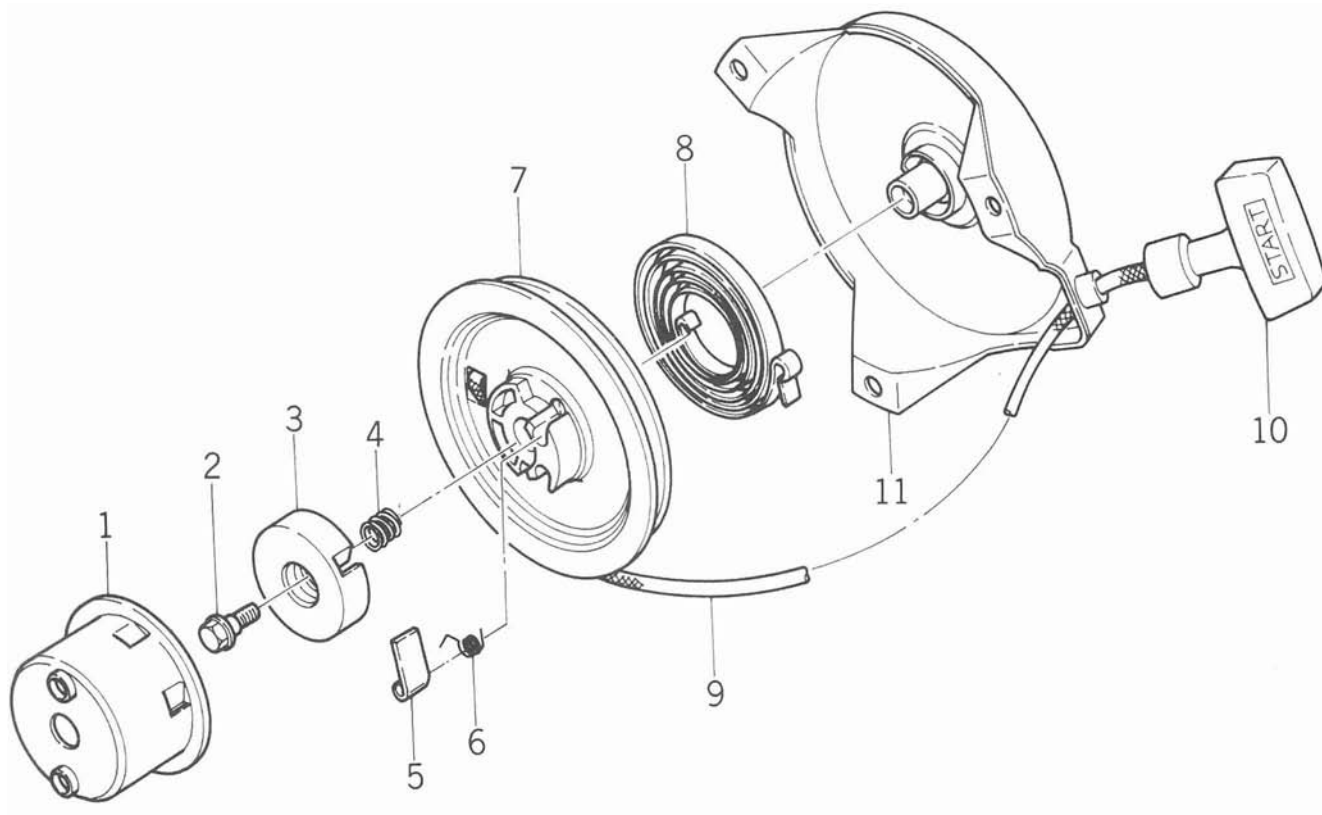


Fig. C-1 CARBURETOR

| Ref. No. | Part No. | Part Name | Q'ty | Remarks |
|----------|----------------|-------------------|------|---------|
| | 314599-6100D | CARBURETOR ASS'Y | 1 | |
| C-1- 1 | 312759-6112-00 | •JET, pilot (#35) | 1 | |
| C-1- 2 | 314499-6122A | •VALVE, needle | 1 | |
| C-1- 3 | 314499-6127A | •PIN, float | 1 | |
| C-1- 4 | 314595-6126A | •FLOAT | 1 | |
| C-1- 5 | 314598-6128A | •GASKET | 1 | |
| C-1- 6 | 314595-6132A | •JET, main (#55) | 1 | |
| C-1- 7 | 314596-6129A | •NOZZLE, main | 1 | |
| C-1- 8 | 314499-6159A | •GASKET | 1 | |
| C-1- 9 | 314596-6143A | •BOLT | 1 | |
| C-1-10 | 313650-6114-00 | •SCREW, pilot | 1 | |
| C-1-11 | 312750-6116-00 | •SPRING | 2 | |
| C-1-12 | 315470-6133A | •SCREW, drain | 1 | |
| C-1-13 | 313122-6116-00 | •SPRING | 1 | |
| C-1-14 | 314499-6175A | •VALVE | 1 | |
| C-1-15 | 314499-6177A | •O-RING | 1 | |
| C-1-16 | 314499-6146A | •WASHER | 1 | |
| C-1-17 | 312759-6116-00 | •SPRING | 1 | |
| C-1-18 | 315601-6130A | •CHAMBER, float | 1 | |
| C-1-19 | 314595-6142A | •SHAFT, chock | 1 | |
| C-1-20 | 314599-6102A | •VALVE, chock | 1 | |
| C-1-21 | 315470-6137A | •SCREW | 1 | |
| C-1-22 | 314599-6139A | •SHAFT, throttle | 1 | |
| C-1-23 | 314599-6101A | •VALVE, throttle | 1 | |
| C-1-24 | 313650-6134-00 | •SPRING | 1 | |
| C-1-25 | 315823-6115A | •SCREW | 1 | |



| Ref. No. | Part No. | Part Name | Q'ty | Remarks |
|----------|--------------|-------------------------|------|---------|
| | 314501-3430A | RECOIL STARTER ASS'Y | 1 | |
| R-1- 1 | 314501-3432A | •PULLEY | 1 | |
| R-1- 2 | 314501-3447A | •BOLT | 1 | |
| R-1- 3 | 314401-3449A | •RETAINER | 1 | |
| R-1- 4 | 314401-3446A | •SPRING | 1 | |
| R-1- 5 | 314401-3445A | •PAWL, recoil | 1 | |
| R-1- 6 | 314401-3444A | •SPRING, return | 1 | |
| R-1- 7 | 314501-3441A | •REEL, recoil | 1 | |
| R-1- 8 | 314401-3452A | •SPRING, recoil | 1 | |
| R-1- 9 | 314401-3453A | •ROPE (4 X 1120) | 1 | |
| R-1-10 | 312801-3454A | •HANDLE, recoil starter | 1 | |
| R-1-11 | 314501-3437A | •CASE, recoil starter | 1 | |

 **Kawasaki Motors Corp. U.S.A.**
Engine Division.

887 Valley Park Drive, Shakopee, Minnesota 55379 • Phone (612) 445-6060

P/N 99969-0481

Printed in U.S.A.