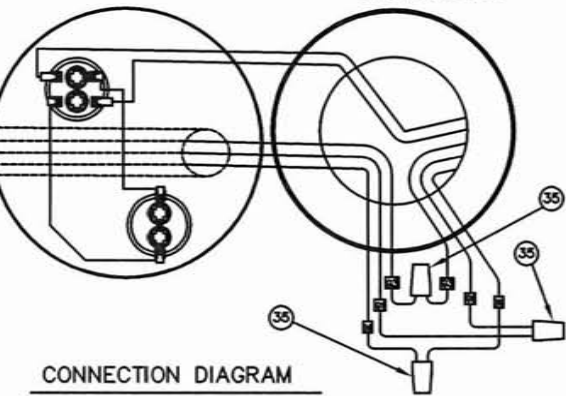
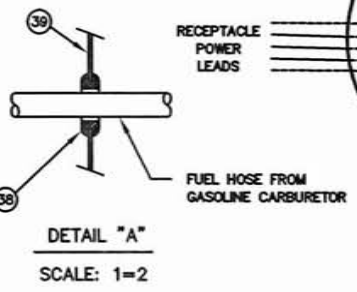
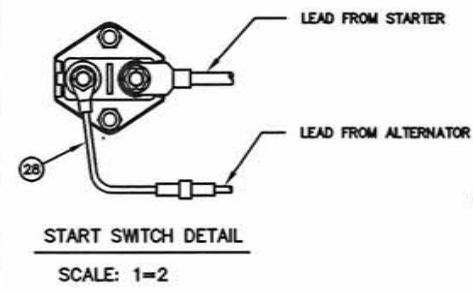
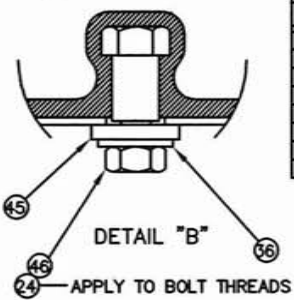
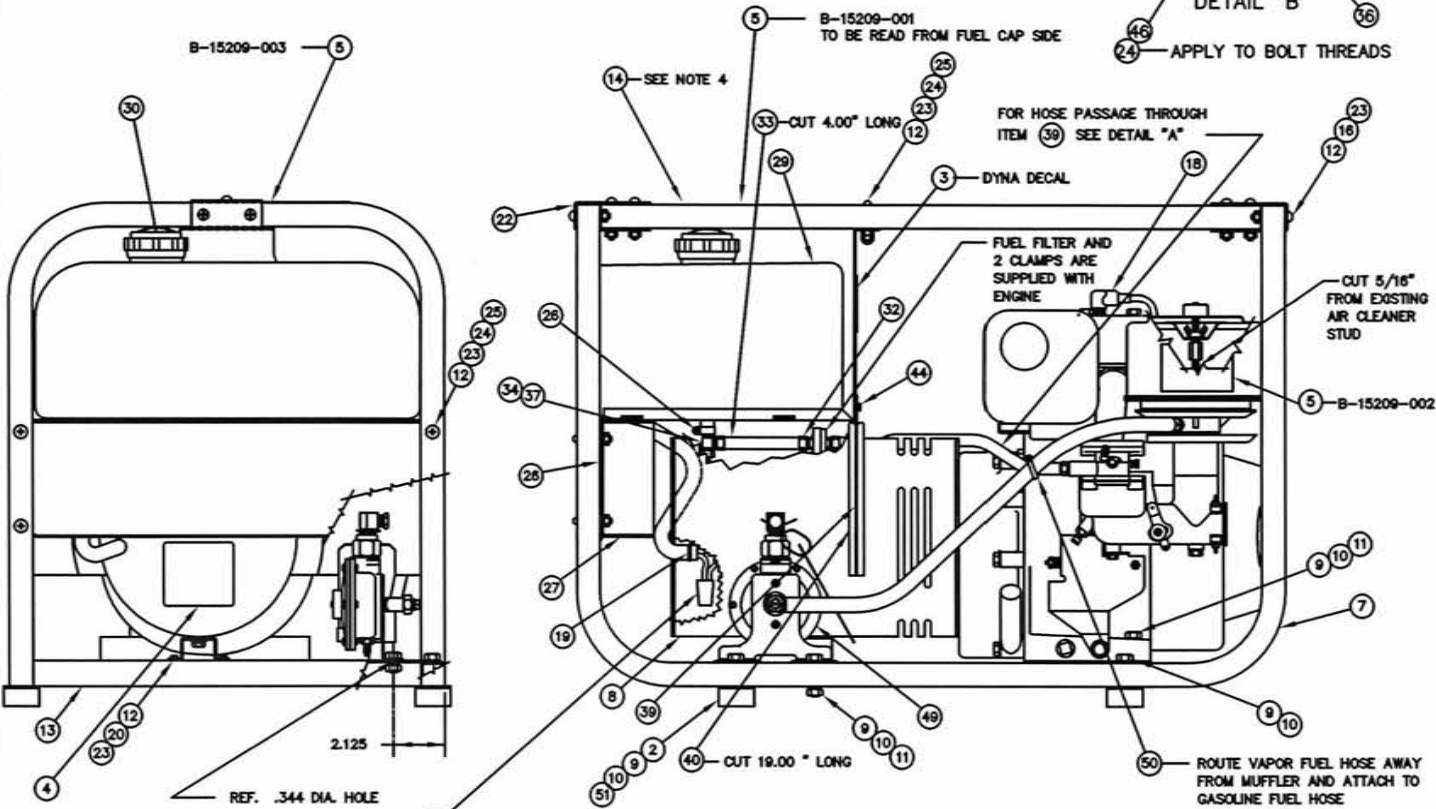


XXX-98891

MODEL	PART NO.	ITEM (1)	ITEM (2)	ITEM (3)	QTY (1)	QTY (2)	QTY (3)	QTY (4)	QTY (5)
TFLC6000E/N	C-15886-000	B-15972-025	C-15359-005	---	C-15909-000	1	3	---	3
TFLC5000E-52/N	C-15886-001	B-15972-041	C-15359-018	1	C-15908-000	---	2	1	9

NOTE:

1. APPLY MODEL/FEATURE STICKER & HANG TAG ON OUTSIDE OF CARTON.
2. APPLY BAR CODE LABEL TO CARTON AS INDICATED ON DRAWING B-15517
3. USE PIPE JOINT COMPOUND ON ALL VAPOR FUEL THREADED FITTINGS.
4. INSTALL TOP MEMBER WITH CONCAVE SIDE POINTING DOWNWARDS.
5. FASTEN FUEL TANK TO TRAY AS SHOWN IN DETAIL "B".



ISSUE	E.C.O. NO.	DESCRIPTION	DATE	BY	APPR.
1		ORIGINAL			
2	213-93	(9) WAS QTY. 8 (11) WAS QTY. 4, REVISED PICTORIAL	6-30-93	C.M.	G.R.
3	275-93	ADDED (51) ADDED NOTE 4	8-16-93	C.M.	G.R.
4	321-93	ADDED PACK GROUP	10-22-93	C.M.	S.V.
5	119-94	ADDED (6)	5-9-94	C.M.	S.V.
6	368-95	(50) WAS QTY. 5, (39) WAS B-15483, ADDED (40), (46), & DETAIL "B"	7-20-95	C.M.	S.V.
7		(4) WAS 63986-0	1-3-00	DW	

REF: C-15707

ITEM	PART NO.	QUAN.	DESCRIPTION
51	A-23760-000	4	FLAT WASHER
50	A-49975-011	1	CABLE TIE
49	A-15062-001	1	GAS KIT INSTALLATION
48			
47			
46	A-81589-000	.01 OZ	LOCKTITE
45	A-161330-000	2	LEATHER WASHER 3/4 OD 1/4 ID
44	C-53644-000	SEE TABLE	#10-24 X 3/8 SELF TAPPING SCREW
43	C-15696-000	SEE TABLE	REAR PANEL, RIGHT END
42	C-15697-000	SEE TABLE	REAR PANEL, LEFT END (EXHAUST SIDE)
41	60710-017	1	O W TAG
40	A-15287-000	1.59 FT.	AIR SEAL
39	C-15520-000	1	BAFFLE
38	A-23917-000	1	GROMMET
37	A-98771-000	1	FUEL SHUT OFF VALVE
36	466-000	2	HHCS 1/4-20 X 3/4
35	A-96936-007	SEE TABLE	WIRE NUT
34	A-81879-000	AS REQ'D.	SEALANT
33	A-40078-000	.34 FT.	HOSE
32	B-62999-001	2	HOSE CLAMP
31	A-81016-008	1	HOSE CLAMP
30	A-15482-000	1	FUEL CAP
29	B-64024-000	1	FUEL TANK
28	B-52134-019	1	LEAD WIRE ASSEMBLY
27	C-15463-001	SEE TABLE	REAR PANEL
26	SEE TABLE	1	RECEPTACLE PANEL ASSEMBLY
25	A-94375-003	5	1/4-20 X 1.50 PHILIPS TRUSS HD. SCREW
24	A-512-000	7	1/4 FLAT WASHER
23	479-000	15	1/4 SPLIT LOCKWASHER
22	A-15802-000	2	ADAPTER, TUBING
21	A-23760-000	4	FLAT WASHER
20	463-000	2	1/4-20 X .50 HEX HD. BOLT
19	A-49975-010	4	CABLE TIE
18	A-64526-003	1	GASOLINE ENGINE
17	60707-203	SEE TABLE	50 HZ INSTRUCTIONS
16	A-56842-002	8	1/4-20 X 1.50 CARRIAGE BOLT
15			
14	C-15881-000	1	CRADLE TOP MEMBER
13	C-15506-000	3	CRADLE CROSS MEMBER
12	638-000	15	1/4-20 HEXNUT
11	458-000	2	5/16-18 HEXNUT
10	468-000	8	5/16 X 1.50 HEX HD. BOLT
9	480-000	6	5/16 SPLIT LOCKWASHER
8	SEE TABLE	1	GENERATOR PARTS UNASSEMBLED
7	C-15876-000	2	CRADLE HALF
6	57543-000	1	SPARK ARRESTER TAG
5	B-15209-000	1	WARNING DECAL SET
4	A-83986-003	1	NAMEPLATE
3	A-15370-000	1	DYNAL DECAL
2	A-15873-000	4	RUBBER FOOT
1	SEE TABLE	1	PACK GROUP (NOT SHOWN)

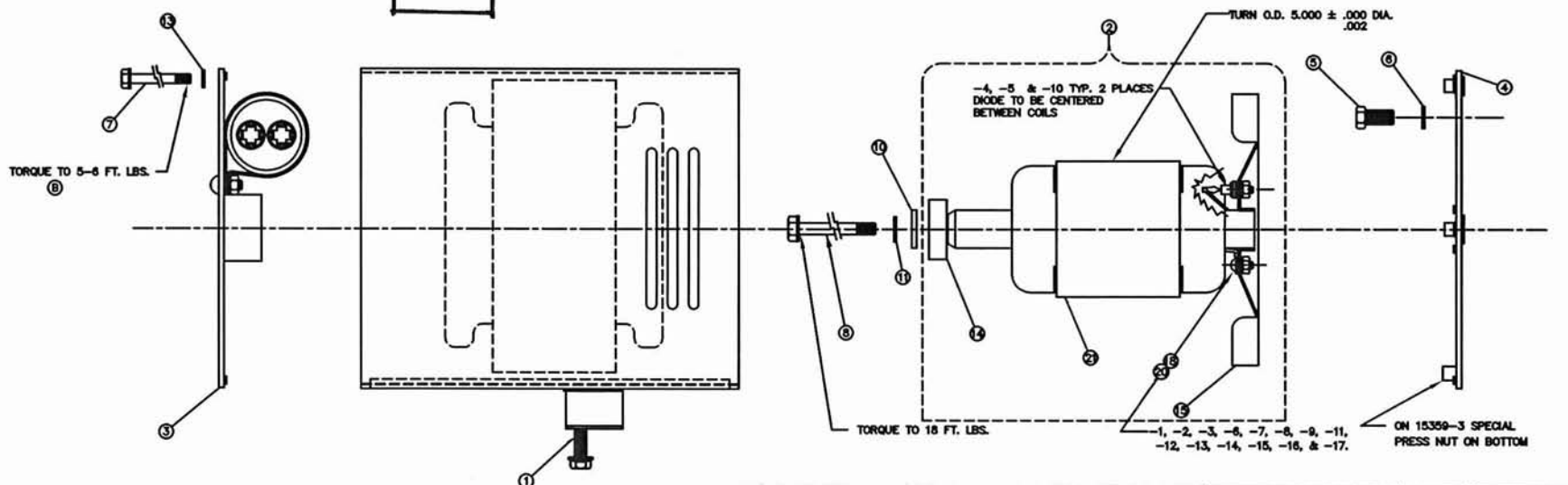
UNLESS OTHERWISE SPECIFIED		MACHINED SURFACE TEXTURE	ALL DIMENSIONS GIVEN IN INCHES	
FRACTIONS & PLACE DEC. & 3. PLACE DEC. &	ANGULAR ±		WORK TO DIMENSIONS - DO NOT SCALE -	
DRAWN BY G.R.	DATE 5-15-93	CHKD BY G.R.	DATE 5/26/93	APPR BY G.R.
THIS DRAWING CONTAINS PROPRIETARY INFORMATION BELONGING TO WINDCO UNAUTHORIZED USE IS PROHIBITED.		MATERIAL		SCALE 1=4
FINISH		TITLE		COMPLETE UNIT ASS'Y
ASBY		MODEL SEE TABLE		
PART NO.		DESCRIPTION		PART NO. C-15886-XXX

TFLC 6000 E/N

B-15359
SHEET 1 OF 3

TFLC

PART NO.	15359-1	15359-2	15359-3	15359-4	15359-5	15359-6	15359-7	15359-8	15359-9	15359-10	15359-11	15359-12	15359-13	15359-14	15359-15	15359-16	15359-17	15359-18	15359-19	15359-20	15359-21	15359-22		
MODEL (REF.)	DLC4500	LC3000	LC4500	LC8000	DLC6000	LC3500-52	LC4500H	LC3000I	LC3000-2/A	LC5000-52/A	CSALC3000H	SALC4500	SALC4500H	MSALC4500	MSALC4600H	MSALC3000	MSALC3000I/A	LC2500H-52	LC2500H-52	CA4500	CA3000	CA4500ER		
KW (REF.) (ENG-GEN SET)	4.0	2.5	4.0	5.5	5.5	3.2	4.0	2.5	2.5	4.4	2.5	4.0	4.0	4.0	2.5	4.4	2.5	2.0	4.0	2.5	4.0			
STACK LOCATION "L"	3.514	3.514	3.514	3.274	3.274	3.514	3.514	3.514	3.514	3.514	3.514	3.514	3.514	3.514	3.514	3.514	3.514	3.274	3.514	3.514	3.514			
FULL POWER (REF)	NO	NO	NO	NO	NO	NO	NO	NO	NO	NO	NO	NO	NO	NO	NO	NO	NO	NO	NO	NO	NO			
ITEM	DESCRIPTION	QTY.	15359-1	15359-2	15359-3	15359-4	15359-5	15359-6	15359-7	15359-8	15359-9	15359-10	15359-11	15359-12	15359-13	15359-14	15359-15	15359-16	15359-17	15359-18	15359-19	15359-20	15359-21	15359-22
1	STATOR/SHELL ASSY	1	15359-411	15359-412	15359-413	15359-414	15359-415	15359-416	15359-417	15359-418	15359-419	15359-420	15359-421	15359-422	15359-423	15359-424	15359-425	15359-426	15359-427	15359-428	15359-429	15359-430	15359-431	15359-432
2	ROTOR ASSY COMP.	1	15359-421	15359-422	15359-423	15359-424	15359-425	15359-426	15359-427	15359-428	15359-429	15359-430	15359-431	15359-432	15359-433	15359-434	15359-435	15359-436	15359-437	15359-438	15359-439	15359-440	15359-441	15359-442
3	BRG BRK ASSY	1	15474	15364	15365	15475	15476	15364-1	15365	15364	15364-2	B-15618	15364-3	15365-1	15365-1	15699	15699	15723	15723	15476	15364-1	15699-1	15723	15474-1
4	ENG BRK ASSY	1	15367-0	15366-0	15367-0	15505	15505	15367-0	15367-1	15597	15366-0	15505	15597	15367	15367-1	15367-0	15367-1	15366-0	15597	15505	15366-0	15367-4	15366-2	15367-4
5	HHCS	4	464	57199	464	464	464	464	464	57199	57199	464	57199	464	464	464	464	57199	57199	464	57199	464	57199	464
6	LOCKWASHER	4	481	480	481	481	481	481	481	480	480	481	480	481	481	481	481	480	480	481	480	481	480	481
7	BOLT 1/4-20	4	15530-3	15530-2	15530-3	15530-4	15530-4	15530-3	15530-3	15530-2	15530-4	15530-2	15530-3	15530-3	15530-3	15530-3	15530-3	15530-2	15530-2	15530-4	15530-2	15530-3	15530-2	15530-3
8	BOLT 5/16-24	1	15529-1	15529-1	15529-1	15529-2	15529-2	15529-1	15529-1	15529-1	15529-1	15529-2	15529-1	15529-1	15529-1	15529-1	15529-1	15529-1	15529-1	15529-1	15529-2	15529-1	15529-1	15529-1
9																								
10	WASHER	1	23558	23558	23558	23558	23558	23558	23558	23558	23558	23558	23558	23558	23558	23558	23558	23558	23558	23558	23558	23558	23558	23558
11	LOCKWASHER	1	480	480	480	480	480	480	480	480	480	480	480	480	480	480	480	480	480	480	480	480	480	480
12	PLUG (6-15P)	1																						
13	LOCKWASHER 1/4	4	479	479	479	479	479	479	479	479	479	479	479	479	479	479	479	479	479	479	479	479	479	479



ITEM	QTY.	COMPLETE-ROTOR ASSEMBLY	15359-421	15359-422	15359-423	15359-424
14	1	BEARING	55223	55223		55223
15	1	FAN	15298	15298		15298-1
18	1	SCREW # 10-32 X 3/8	599	599	USE 15359-421	
19	1	LOCKWASHER #10				
20	1	NUT #10	6372	6372		
21	1	ROTOR ASSEMBLY	15361-3	15361-2		15361-1
			15359-1	15359-2	15359-3	15359-4
			15359-6	15359-8		15359-5
			15359-7	15359-9		15359-10
			15359-12	15359-11		15359-18
			15359-13	15359-16		
			15359-14	15359-17		
			15359-15			

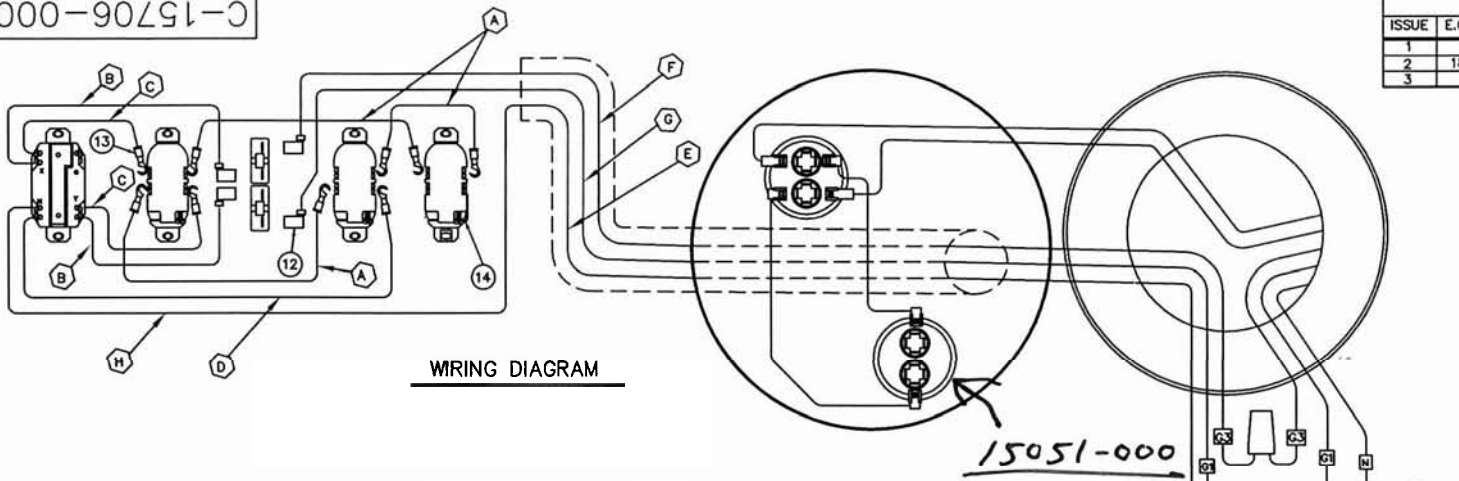
USED ON PROD. GEN. REF. ONLY

- 27 UPDATED PICTORIALY
- 28 187-96 DELETED 484 ON -421 & -422
- 25 187-96 CORRECTED VIEW FOR (1)

8-31-00 BN
12-16-97 J.W. S.V.
6/4/98 C.M. S.V.

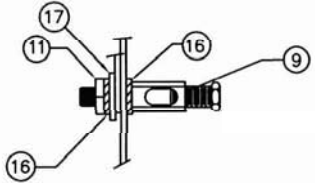
UNLESS OTHERWISE SPECIFIED		MACHINED SURFACE TEXTURE		ALL DIMENSIONS GIVEN IN INCHES	
FRACTIONS & ANGULAR	1. PLACE DEC. ± .1	ANGULAR ± 1.5°	WORK TO DIMENSIONS		
	2. PLACE DEC. ± .031		- DO NOT SCALE -		
	3. PLACE DEC. ± .005				
DRAWN BY	DATE	CHKD BY	DATE	APPD BY	SCALE
C.M.	5-26-93				1=3
MATERIAL:		TITLE			
FINISH:		GENERATOR PARTS			
ASSY:		PART NO. B-15359			
MODEL:		SHEET 1 OF 3			
LC SERIES		WINDCO INCORPORATED			

REVISION RECORD					
ISSUE	E.C.O. NO.	DESCRIPTION	DATE	BY	APPR.
1	---	ORIGINAL	---	---	---
2	189-92	(7) & (8) WERE 26", (9) WAS 32", (10) WAS QTY (1), (11) WAS 11.25	6-18-92	D.W.	E.F.
3		ADDED (12), (13), (14) WAS 8402-1, (15) 84211, (16) QTY. 2	12-10-99	T.B.	



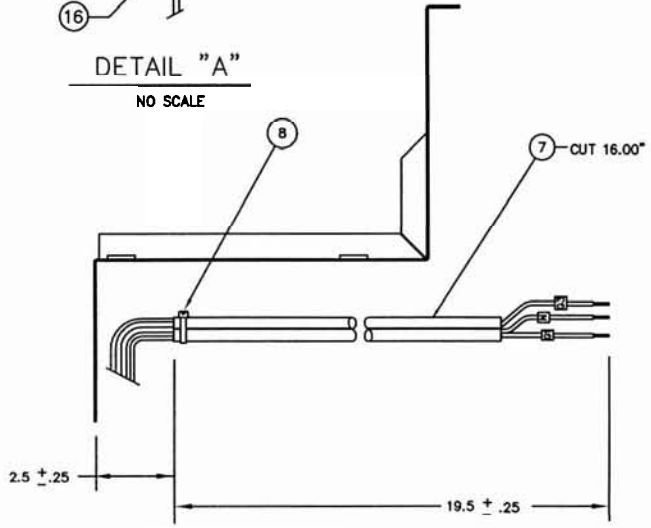
WIRING DIAGRAM

ITEM	LEAD WIRE		"A" END		"B" END		REMARKS
	PART NO.	LENGTH	TERM. LUG	STRIP	TERM. LUG	STRIP	
A	B-91815-000	6.00"	3	B-21850-002 3/8"	B-21850-002 3/8"		
B	B-91815-000	7.00"	2		B-61898-000 3/8"		
C	B-91815-000	6.00"	2		B-21850-002 3/8"		
D	B-91815-000	9.00"	1		B-21850-002 3/8"		
E	B-91815-000	36.00"	1			3/4"	STAMP "N"
F	B-91815-000	30.00"	1	B-61898-000 3/8"		3/4"	STAMP "G3"
G	B-91815-000	30.00"	1	B-61898-000 3/8"		3/4"	STAMP "G1"

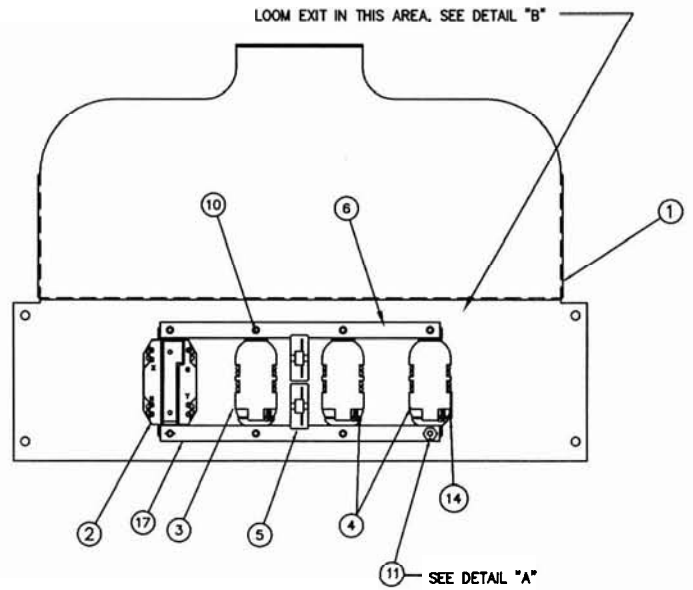


DETAIL "A"

NO SCALE



DETAIL "B"



REAR VIEW WITH COVER REMOVED

17	B-64045-018	1	GROUND STRAP
16	21975-000	2	#10 INT. TOOTH LOCKWASHER
15	B-91815-000	12.92 FT	# 12 GA. LEAD WIRE
14	A-41387-009	1	GROUND STRAP
13	B-21850-002	9	TERMINAL LUG
12	B-61898-000	4	TERMINAL LUG
11	456-000	1	#10-24 HEX NUT
10	A-21898-001	7	#10 X 3/8 TYPE "Z" SHEET METAL SCREW
9	A-64833-000	1	GROUND LUG
8	A-49975-010	3	CABLE TIE
7	A-62487-003	1.34 FT.	WIRE LOOM
6	B-64045-001	1	GROUND STRAP
5	B-91286-006	2	25 AMP. CIRCUIT BREAKER
4	B-50766-000	2	20 AMP. 125 VOLT DUPLEX RECEPTACLE
3	A-15504-000	1	20 AMP. 250 VOLT DUPLEX RECEPTACLE
2	A-97360-000	1	30 AMP. 125/250 VOLT RECEPTACLE
1	C-15705-000	1	FRONT PANEL AND FUEL TANK SUPPORT

ITEM	PART NO	QUAN.	DESCRIPTION
UNLESS OTHERWISE SPECIFIED			
FRACTIONS ±		ANGULAR	MACHINED SURFACE TEXTURE
1. PLACE DEC. ± .1		± 1.5"	ALL DIMENSIONS GIVEN IN INCHES WORK TO DIMENSIONS - DO NOT SCALE -
2. PLACE DEC. ± .031			
3. PLACE DEC. ± .005			
DRAWN BY: DATE: CHKD BY: DATE: APPD BY: DATE: SCALE: 1"=3"			
MATERIAL: -----			
FINISH: -----			
ASSY: C-15707-000			
MODEL: TFDLC6000E/B			
TITLE: RECEPTACLE PANEL ASSEMBLY			PART NO. C-15706-000

