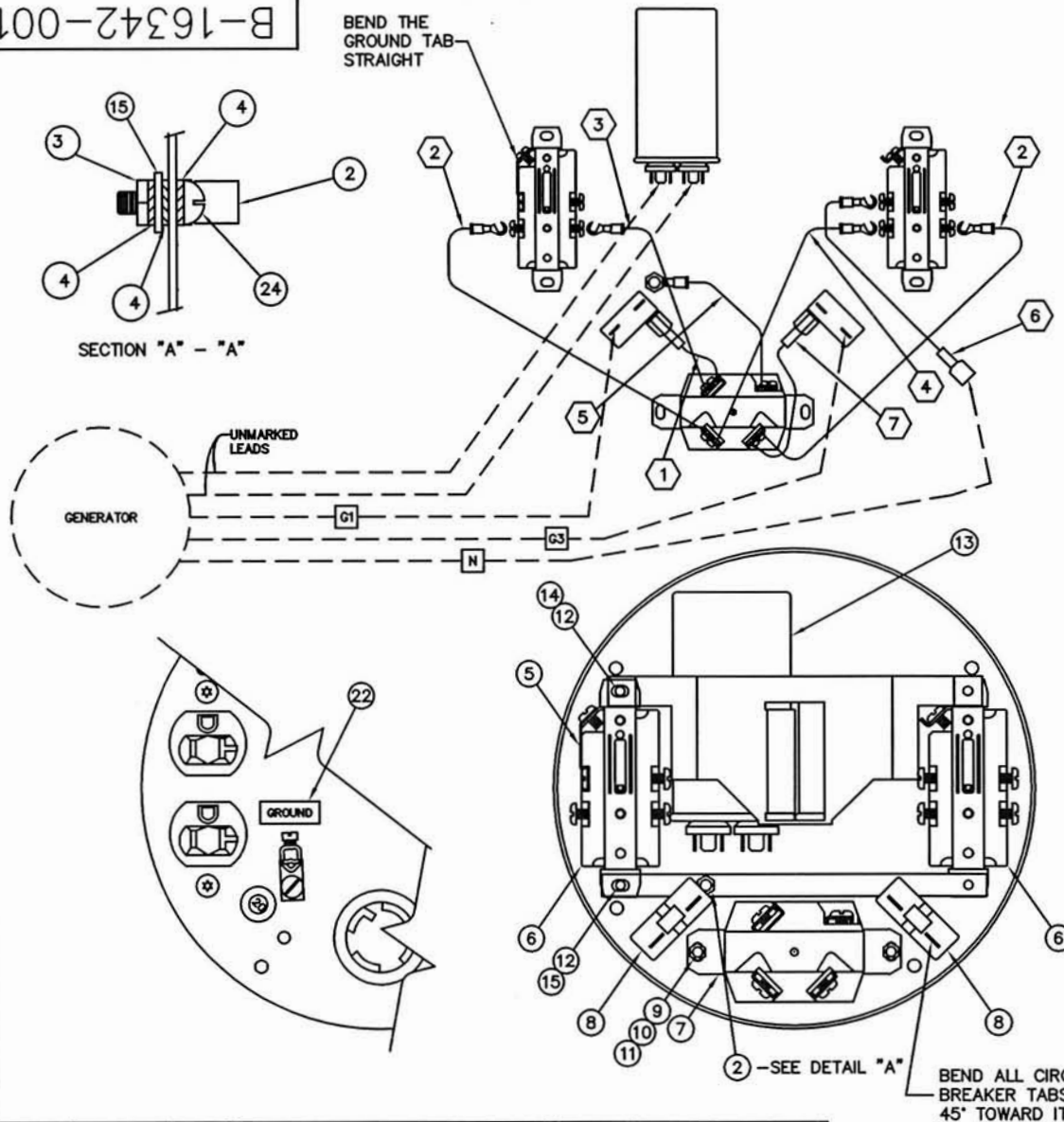


B-16342-001



#	ITEM	QTY	LEAD WIRE		"A" END		"B" END		REMARKS
			PART NO.	LENGTH	TERM. LUG	STRIP	TERM. LUG	STRIP	
	1	1	91815	3.5"	61898-000	3/8"	21850-002	1/2"	
	2	2	91815	6.25"	21850-002	3/8"	21850-002	1/2"	
	3	1	91815	4.50"	21850-002	3/8"	21850-002	1/2"	
	4	1	91815	5.50"	21850-002	3/8"	21850-002	1/2"	
	5	1	59341	4.0"	4158-000	3/8"	21850-002	1/2"	
	6	1	91815	4.0"	21850-002	3/8"	48602-004	3/8"	
	7	1	91815	4.50"	61898.000	3/8"	21850-002	1/2"	

24	419-000	1	#10-24 X 1/2 ROUND HEAD SCREW
23	A-49975-010	2	CABLE TIE
22	A-15750-000	1	DECAL, GROUND
21	4158-000	1	TERMINAL LUG
20	B-21850-002	12	TERMINAL LUG
19	A-61898-000	2	TERMINAL LUG
18	B-48602-004	1	TERMINAL LUG
17	A-59341-000	.375 FT	LEAD WIRE, #14 GA. GREEN
16	B-91815-000	2.44 FT	LEAD WIRE, #14 GA. BLACK
15	B-64045-029	1	MOUNTING STRAP
14	A-15088-000	1	CAPACITOR STRAP
13	A-15051-000	1	CAPACITOR
12	A-21698-001	4	TORX SHEET METAL SCREW, #10 x 3/8
11	21976-000	2	LW, #8 EXTERNAL TOOTH
10	5113-000	2	HN #8-32
9	A-6402-001	2	BHMS #8-32 x 3/8
8	B-91286-001	2	CIRCUIT BREAKER, 20 AMP
7	A-97360-000	1	30 AMP, 120/240 RECEPTACLE (L14-30)
6	A-50766-000	2	20 AMP, 120 VOLT DUPLEX RECEPTACLE
5	A-41387-009	1	GROUND STRAP
4	21975-000	3	LW, #10 EXTERNAL TOOTH
3	456-000	1	HN #10-24
2	A-48042-001	1	GROUND LUG
1	A-15050-002	1	END COVER

ITEM	PART NO	QTY	DESCRIPTION
UNLESS OTHERWISE SPECIFIED			
FRACTIONS ±		ANGULAR	MACHINED SURFACE TEXTURE
1. PLACE DEC. ± .1		± 1.5°	ALL DIMENSIONS GIVEN IN INCHES
2. PLACE DEC. ± .031			WORK TO DIMENSIONS
3. PLACE DEC. ± .005			- DO NOT SCALE -

THIS DRAWING CONTAINS PROPRIETARY INFORMATION BELONGING TO WINCO, UNAUTHORIZED USE IS PROHIBITED.	DRAWN BY	DATE	CHKD BY	DATE	APP'D BY	DATE	SCALE
	RH	7/22/03			RH	7/22/03	1=2
	MATERIAL: -----						
	FINISH	-----	TITLE				
ASSY	15588-003	END COVER ASSEMBLY					
MODEL	TB4000C/C	PART NO.					
						B-16342-001	

ISSUE	E.C.O. NO.	DESCRIPTION	DATE	BY	APPD
5	107-07	ITEM (2) WAS A-64833-000, ADDED ITEM (24)	7-2-07	E.F.	PJT
REVISION RECORD					