

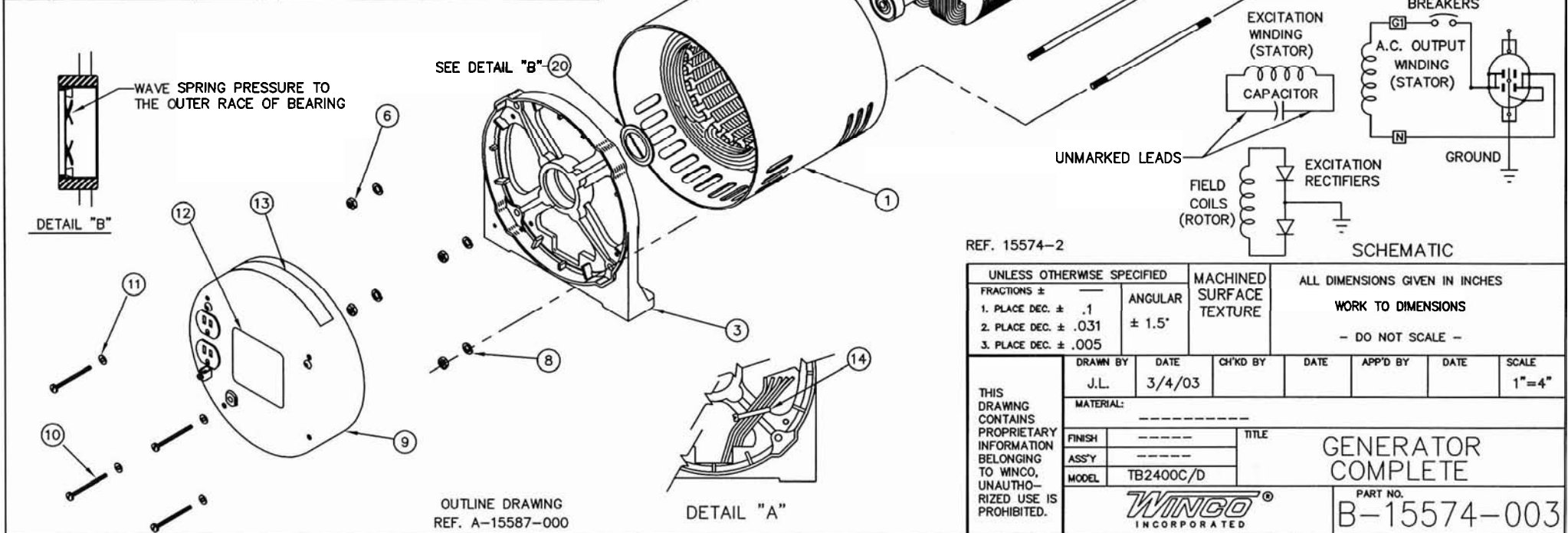
B-15574-003

ITEM	PART NO	QUAN.	DESCRIPTION
1	B-15572-000	1	STATOR ASSEMBLY
2	B-15570-000	1	ROTOR ASSEMBLY
3	A-15561-000	1	BEARING BRACKET ASSEMBLY
4	B-15577-001	1	DRIVE END BRACKET ASSEMBLY
5	B-15068-003	4	1/4-20 THROUGH BOLT
6	638-000	4	1/4-20 HEXNUT
7	100054-644	1	INNER PACK LINER
8	479-000	7	1/4 SPLIT LOCKWASHER
9	B-15596-002	1	END COVER ASSEMBLY
10	A-15013-000	4	10-32 X 3.5 RD. HD. MACHINE SCREW
11	21975-000	4	#10 INT. TOOTH LOCKWASHER
12	A-63966-007	1	NAMEPLATE
13	B-15209-000	1	DANGER DECAL SET, USE B-15209-003 ONLY
14	A-49975-011	1	CABLE TIE
15	A-44208-000	1	.25" X 1.75" SQUARE KEY
16	B-100,047-686	1	SHIPPING CARTON
17	60706-098	1	OPERATOR'S MANUAL
18	60701-113	1	PARTS LIST
19	24049-000	2	CARRIAGE BOLT (NOT SHOWN)
20	A-16174-000	1	WAVE WASHER
21	16248-000	4	1/4-20 NC FLANGE NUTS

NOTES:

1. SECURE GENERATOR LEADS TO SPOKE OF END BRACKET TO PREVENT THEM FROM COMING IN CONTACT WITH ROTATING COMPONENTS AS SHOWN IN DETAIL "A".
2. EXTEND 5 THROUGH 4 SUCH THAT 1/4" OF THREAD IS EXPOSED ON THE BACK SIDE OF THE DRIVE BRACKET ASSEMBLY.
3. TORQUE ⑥ TO 64 IN-LBS.

REVISION RECORD					
ISSUE	E.C.O. NO.	DESCRIPTION	DATE	BY	APPD
1	---	ORIGINAL	----	---	---
2	057-07	ITEM 12 WAS A-63966-003	11/28/06	BMK	PJT
3	022-08	ITEM 19, QTY. WAS 4	1/24/08	RJB	



OUTLINE DRAWING
REF. A-15587-000

DETAIL "A"

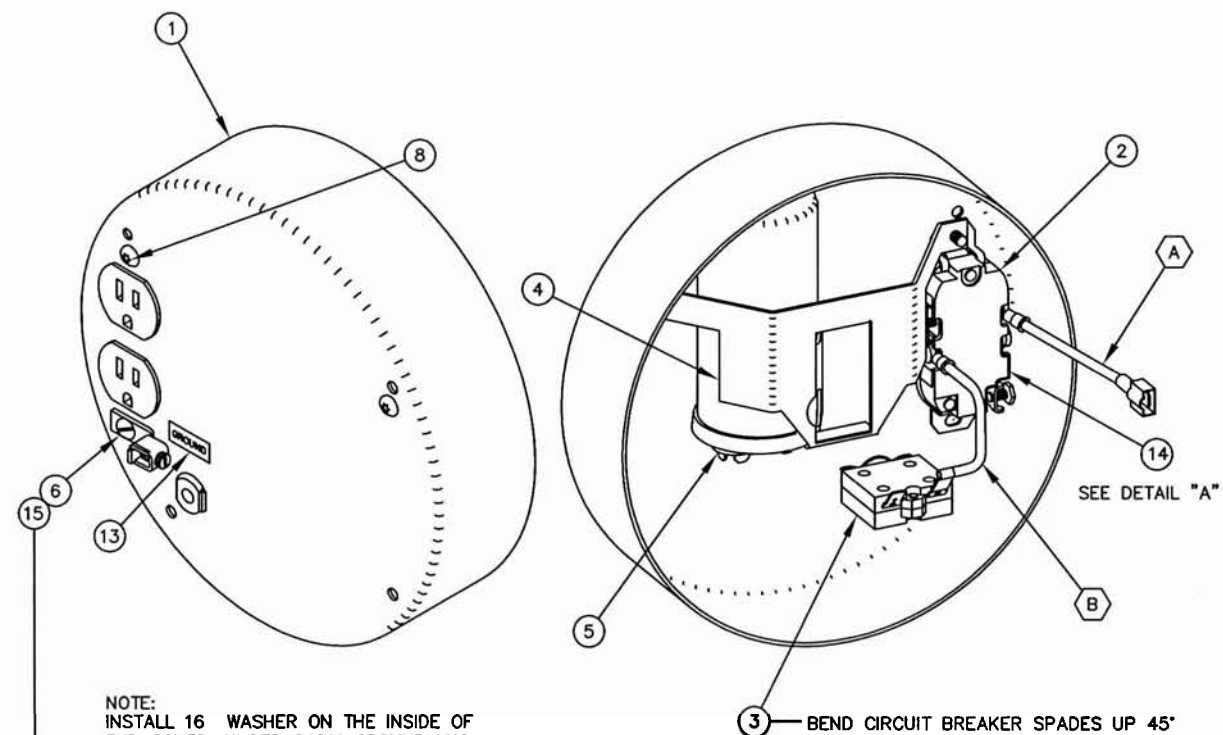
UNLESS OTHERWISE SPECIFIED		MACHINED SURFACE TEXTURE	ALL DIMENSIONS GIVEN IN INCHES			
FRACTIONS ±		ANGULAR ± 1.5°	WORK TO DIMENSIONS			
1. PLACE DEC. ± .1			- DO NOT SCALE -			
2. PLACE DEC. ± .031						
3. PLACE DEC. ± .005						
DRAWN BY	DATE	CHK'D BY	DATE	APP'D BY	DATE	SCALE
J.L.	3/4/03					1"=4"
MATERIAL: _____						
FINISH: _____			TITLE			
ASSY: _____			GENERATOR COMPLETE			
MODEL: TB2400C/D			PART NO. B-15574-003			

THIS DRAWING CONTAINS PROPRIETARY INFORMATION BELONGING TO WINCO. UNAUTHORIZED USE IS PROHIBITED.

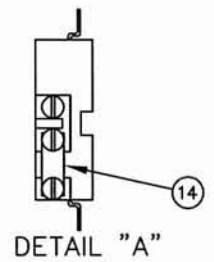
B-15596-XXX

MODEL	PART NO.	ITEM (1)	ITEM (2)	ITEM (3)
TB2400C/A	B-15596-000	B-15133-001	B-24749-000	B-64230-001
TB2400C/B	B-15596-001	B-15133-003	B-24749-000	B-91286-001
TB2400C/D	B-15596-002	B-15133-003	A-50766-000	B-91286-001

REVISION RECORD					
ISSUE	E.C.O. NO.	DESCRIPTION	DATE	BY	APPR.
11	235-00	(7) WAS 40746-000	9-1-00	BN	SV
12	020-01	UPDATED PICTORIALY	1-15-01	BN	SV
13	029-03	ADDED 15596-002	3/4/03	J.L.	SV
14	107-07	ITEM (6) WAS A-64833-000, ADDED ITEM (7)	7-5-07	E.F.	PJT



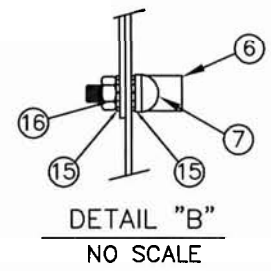
NOTE:
INSTALL 16 WASHER ON THE INSIDE OF
END COVER, UNDER 64211 GROUND LUG.
SEE DETAIL "B"



16	456-000	1	#10-24 HEX NUT
15	A-21975-000	2	#10 INT TOOTH WASHER
14	A-41387-009	1	GROUND STRAP
13	A-15750-000	1	DECAL, GROUND
12	B-48602-029	1	TERMINAL LUG
11	B-48602-004	1	TERMINAL LUG
10	B-21850-002	2	TERMINAL LUG
9	A-91815-000	.67 FT.	LEAD WIRE
8	A-21698-001	2	#10 X 3/8 SELF TAPPING SCREW
7	419-000	1	#10-24 X 1/2 ROUND HEAD SCREW
6	A-48042-001	1	GROUND LUG
5	A-15051-000	1	CAPACITOR
4	B-15088-000	1	CAPACITOR STRAP
3	SEE TABLE	1	20 A. CIRCUIT BREAKER
2	SEE TABLE	1	DUPLEX RECEPTACLE
1	SEE TABLE	1	END COVER

ITEM	PART NO	QUAN.	DESCRIPTION
UNLESS OTHERWISE SPECIFIED			
FRACTIONS ±		ANGULAR	MACHINED SURFACE TEXTURE
1. PLACE DEC. ± .1		± 1.5°	ALL DIMENSIONS GIVEN IN INCHES
2. PLACE DEC. ± .031			WORK TO DIMENSIONS
3. PLACE DEC. ± .005			- DO NOT SCALE -

THIS DRAWING CONTAINS PROPRIETARY INFORMATION BELONGING TO WINCO. UNAUTHORIZED USE IS PROHIBITED.	DRAWN BY	DATE	CHK'D BY	DATE	APP'D BY	DATE	SCALE
	E.I.D.F.	7-1-91	L.R.	2/12/92	L.R.		1"=2"
	MATERIAL: -----						
	FINISH	-----	TITLE				
ASS'Y		B-15574-000		END COVER ASSEMBLY			
MODEL		TB2400C/A					
							PART NO.
							B-15596-XXX



ITEM	QTY.	PART NO.	LENGTH	"A" END	STRIP	"A" END	STRIP
B	1	A-91815-000	4.0"	A-21850-002	3/8"	B-48602-029	1/4"
A	1	A-91815-000	4.0"	A-21850-002	3/8"	B-48602-004	3/8"
ITEM (X)	QTY.	LEAD WIRE		TERMINAL LUG			

LEAD WIRE TABLE