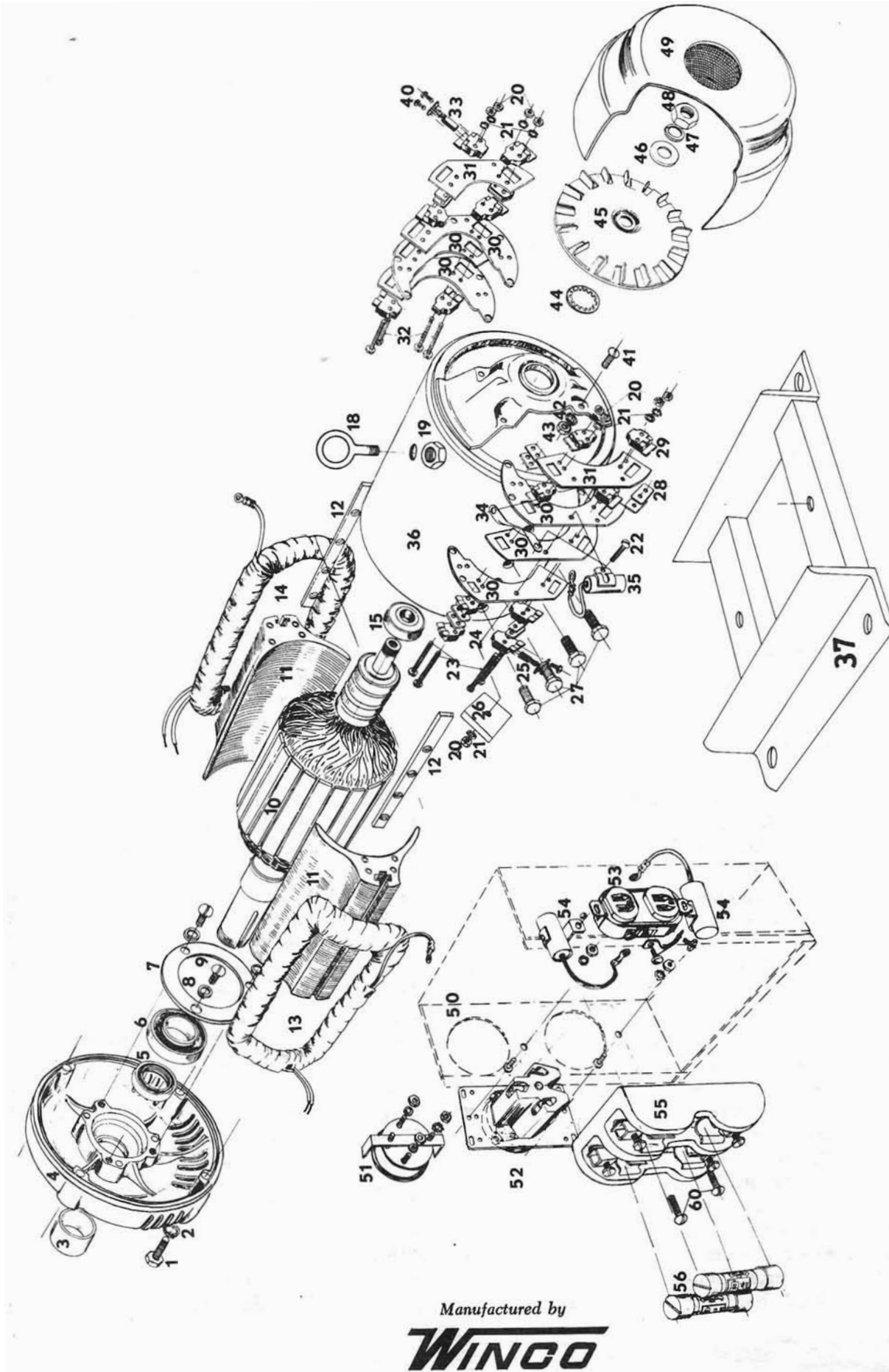


WINCO GENERATOR PLANT MODEL P15PTOF-3/D

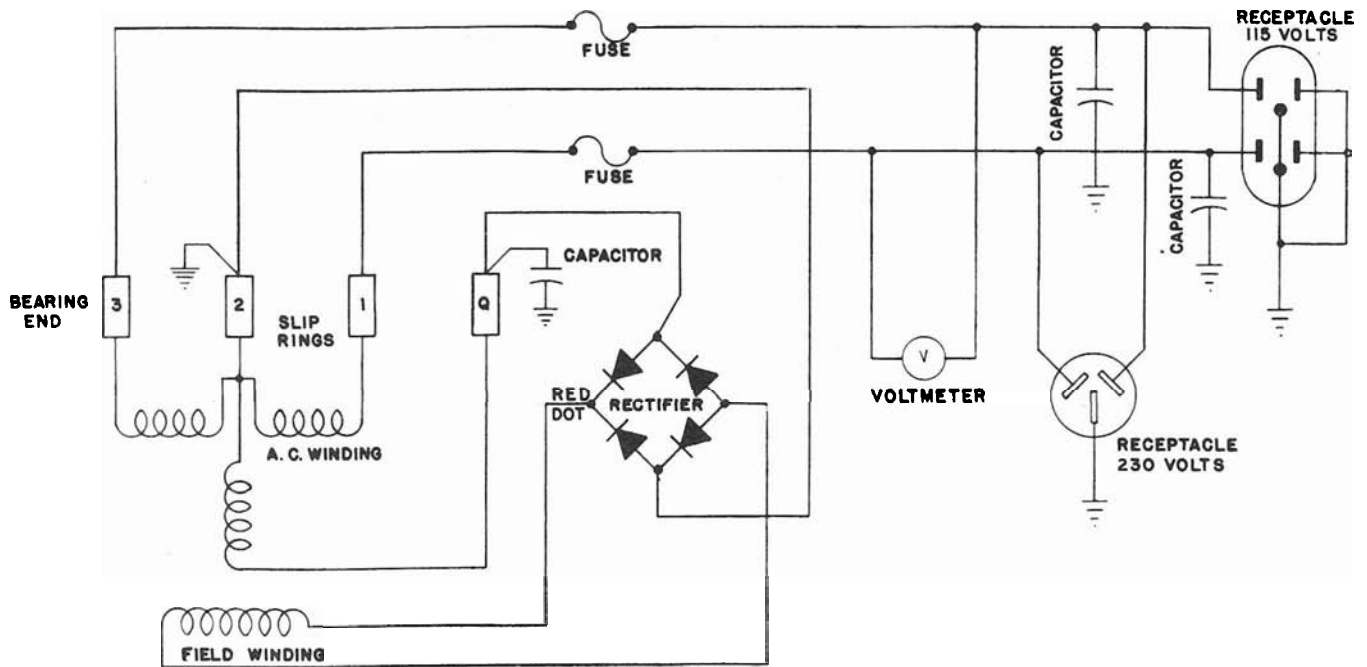


Manufactured by

WINCO

Division of Dyna Technology, Inc.

East Seventh at Division / P. O. Box 3263 / Phone (712) 252-1821 / SIOUX CITY, IOWA 51102



PARTS LIST

Ref. No.	Part No.	Description	Qty.	Ref. No.	Part No.	Description	Qty.
1	51101	Field Sh. cap screw	4	31	52559	Brush holder spacer	2
2	480	Field Shell lockwasher	4	32	44342	Machine screw	4
3	20137	Sleeve	1	33	24981	A.C. Brush	12
4	54804	End Bracket	1	34	41387-6	Ground strap	1
5	46912	Oil Seal	1	35	41221	Condenser	1
6	46913	Bearing	1	36	54734	Field shell & Bracket	1
7	44318	Bearing Retain. Plate	1	37	54754	Base assembly	1
8	479	Bear. Ret. L-washer	3	38	48178	Hex head screw	2
9	45633	Bear. Ret. Screw	3	39	636	Lockwasher (split type)	2
10	52497-1	Armature	1	40	40746	Brush holder screw	28
11	43473	Pole shoe assembly	2	41	4637	Machine screw	4
12	43474	Pole shoe retainer	2	42	484	Lockwasher	4
13	54819	Field coil assembly	1	43	456	Hex Nut	4
14	54819-1	Field Coil assembly	1	44	40552	Lockwasher (fan)	1
15	50215	Bearing	1	45	23404	Fan assembly	1
18	54790	Eye bolt	1	46	21867	Flat washer (fan)	1
19	1744	Nut	3	47	20039	L-washer (fan) split type	1
20	5113	Hex nut	9	48	9549	Hex nut (fan)	1
21	6376	Lockwasher (split type)	9	49	23634	End Cover	1
22	23599	Machine screw	1	50	56194	Control box (only)	1
23	21977	Machine screw	4	51	52490	Voltmeter	1
24	23500	Brush holders	2	52	48343	Receptacle	1
25	53949	Q ring brush	2	53	24749	Duplex receptacle	1
26	53976	Rectifier	1	54	56206	Condensers	2
27	53806	Cap screw	8	55	48406	Fuse base	1
28	23532	Fiber spacers	14	56	48469	Fuse	2
29	23500-2	A.C. brush holders	12	57	43743	Ground Lug	1
30	53975	Brush holder mtg. plate	6	60	6402	Machine screw	2

Any parts required for gas engine portion of the unit should be obtained from the local engine manufacturer's service station.