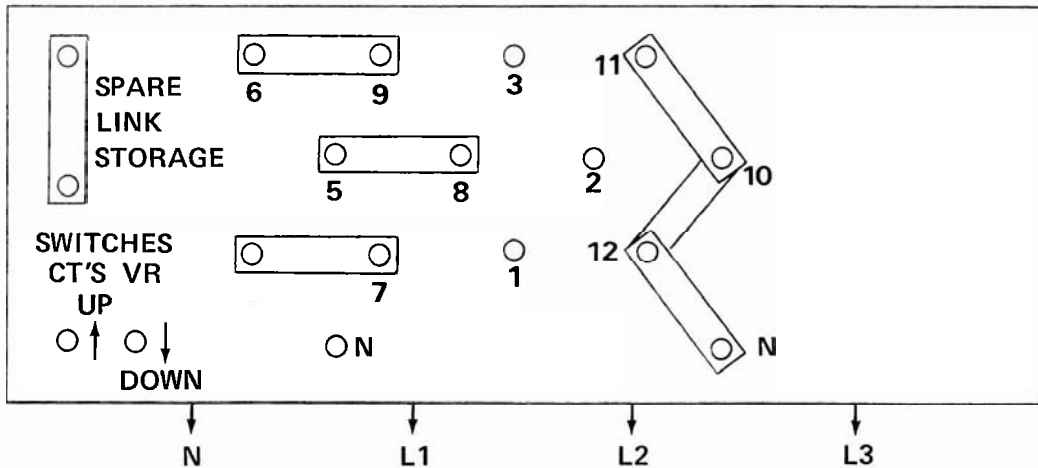
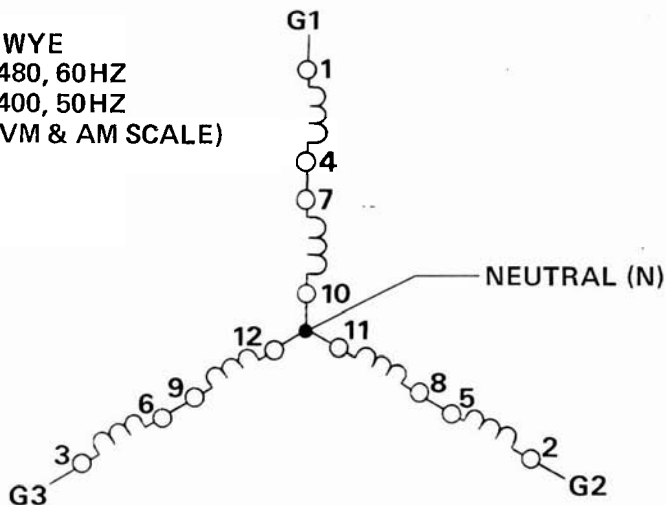
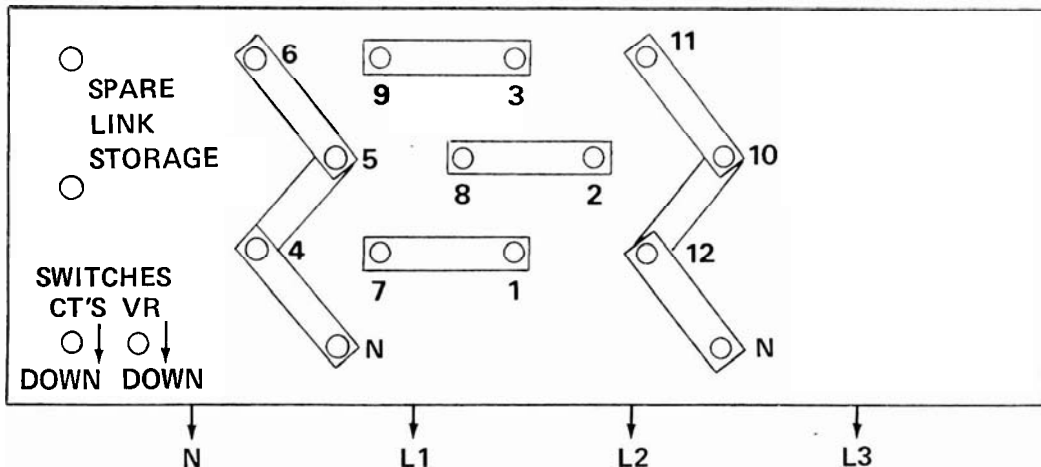
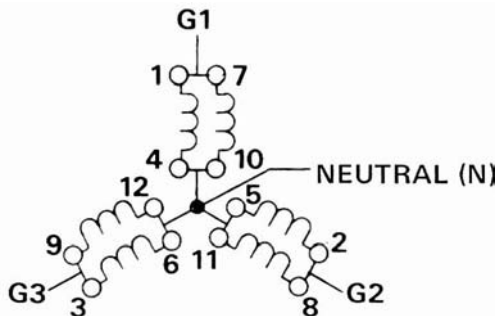


THREE PHASE WYE  
 240/416 - 277/480, 60HZ  
 200/347 - 230/400, 50HZ  
 (READ UPPER VM & AM SCALE)



(LINE LEADS TERMINATED ON STANDOFF'S FOR CUSTOMER CONNECTION)

**THREE PHASE WYE**  
 120/208 - 139/240V, 60HZ  
 100/173 - 115/200V, 50HZ  
 (READ LOWER VM & AM SCALES)



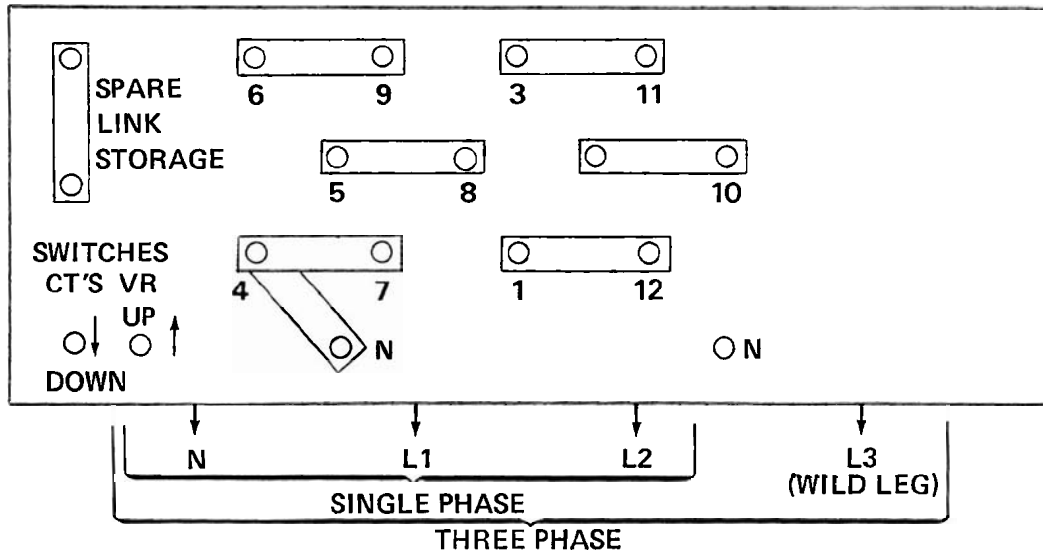
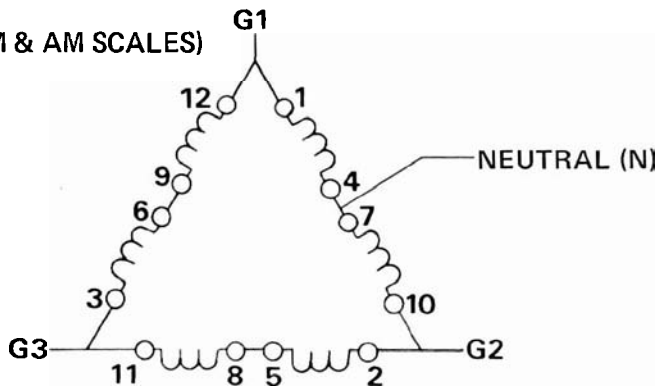
(LINE LEADS TERMINATED ON STANDOFF'S FOR CUSTOMER CONNECTION)

**THREE PHASE DELTA**  
**(SINGLE PHASE W/G3 OPEN)**

120/240V, 60 HZ

110/220V, 50 HZ

(READ LOWER VM & AM SCALES)



(LINE LEADS TERMINATED ON STANDOFF'S FOR CUSTOMER CONNECTION)