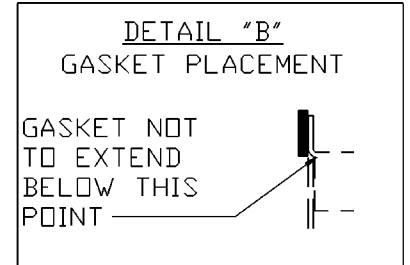
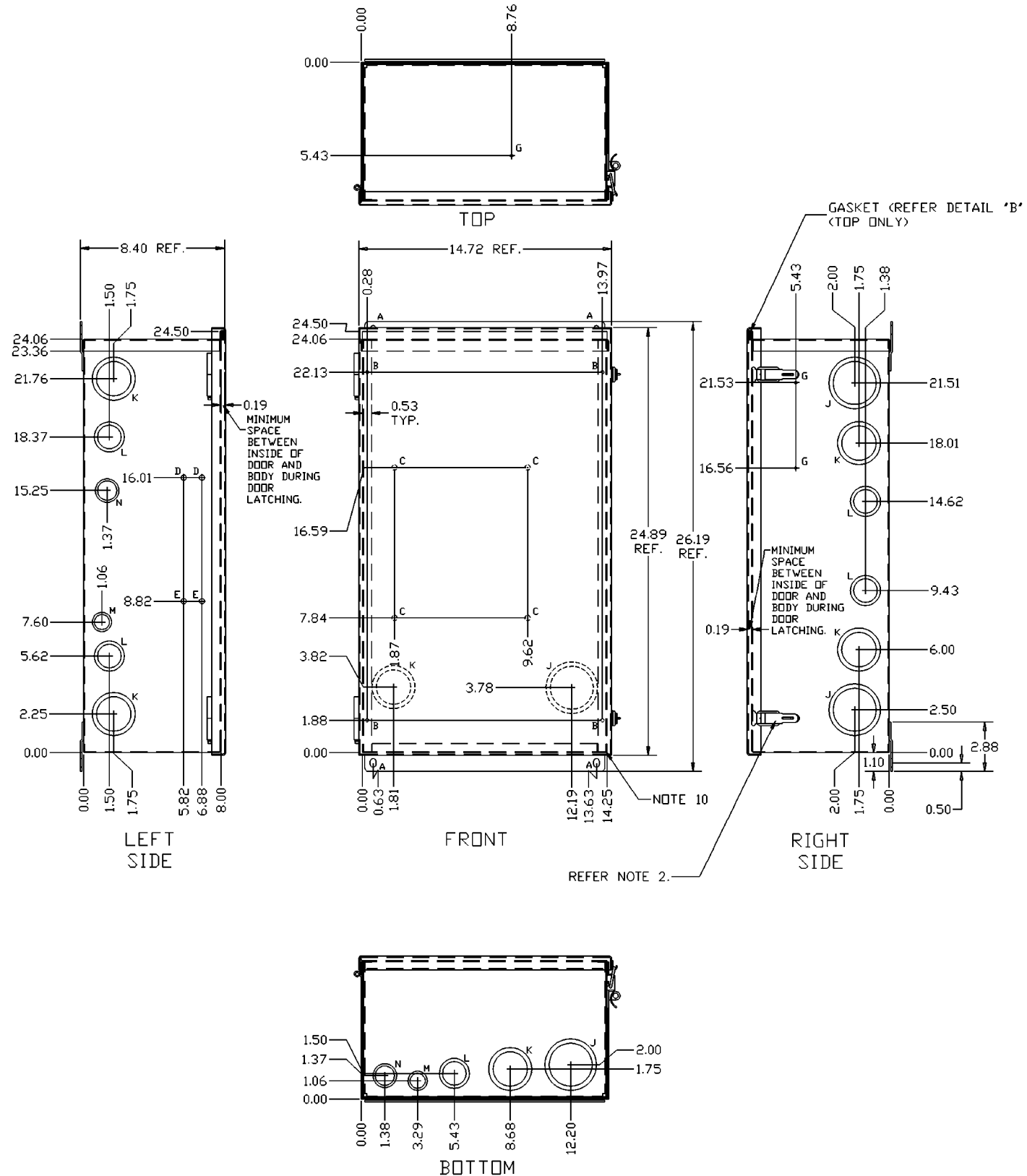


HOLE DATA		QTY.
A	- REFER DETAIL "A"	4
B	- HOLE FOR 0.190 DIA., 10-32, THREAD CUTTING, SLOTTED PAN HEAD COVER MOUNTING SCREWS, TYPE 23 POINT. (SCREWS PROVIDED BY ASCO).	4
C	- 0.249/0.252 DIA. FOR 0.250-20 X 0.50 LONG PEN. ENGRG. & MFG. CO. SELF CLINCHING CAPTIVE STUD PN FH-0420-8-21 MASK THREADS DURING PAINTING.	4
D	- 0.31 DIA. HOLE	2
E	- 0.249/0.252 DIA. FOR 0.250-20 X 0.75 LONG PEN. ENGRG. & MFG. CO. SELF CLINCHING CAPTIVE STUD PN FH-0420-12-21 MASK THREADS DURING PAINTING.	2
G	- 0.163/0.166 DIA. FOR 0.164-32 X 0.312 LONG PENN. ENGRG. & MFG. CO. SELF CLINCHING CAPTIVE STUD PN FH-832-5-21 MASK THREADS DURING PAINTING.	3
J	- 2.0/2.5 COMBINATION KNOCKOUT (TRADE SIZE)	4
K	- 1.5/2.0 COMBINATION KNOCKOUT (TRADE SIZE)	6
L	- 1.25/1.5 COMBINATION KNOCKOUT (TRADE SIZE)	5
M	- 0.5/0.75 COMBINATION KNOCKOUT (TRADE SIZE)	2
N	- 1.0/1.25 COMBINATION KNOCKOUT (TRADE SIZE)	2

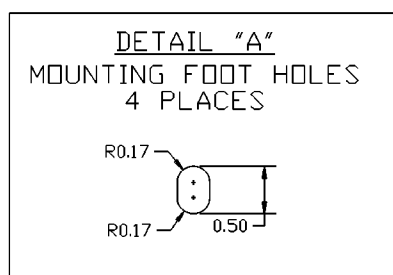
ENCLOSURE SPECIFICATIONS

- HINGED COVER LIFT-OFF TYPE 3R ENCLOSURE. (SIMILAR TO HOFFMAN ENGINEERING TYPE "HCLD") UL 50 LISTED, TYPE 3R ENCLOSURE, LABELED BY VENDOR.
- COVER LATCHES (2) ARE DRAW PULL CATCHES WITH PADLOCKING PROVISION, HOFFMAN ENGINEERING CO. TYPE L14 OR EQUIVALENT.
- OVERALL DIMENSIONS ARE OUTSIDE.
- TO BE CONSTRUCTED IN ACCORDANCE WITH ASCO SWITCH DIVISION COMPONENT SPECIFICATION SCS 01-1.
- MATERIAL:
ENCLOSURE BODY: 16 GAGE GALVANIZED STEEL.
DOOR: 14 GAGE GALVANIZED STEEL.
MOUNTING FEET: 12 GAGE GALVANIZED STEEL.
- FINISH:
LIGHT GRAY (ANSI #61), ASCO SPEC. C-401, CLASS 2 FINISH.
- MAXIMUM BURR ALLOWANCE: .005.
- MAXIMUM BEND ALLOWANCE: .110
- GASKET MATERIAL - MANUFACTURER'S UL APPROVED STANDARD.
- A RUBBER PAD OR GASKET MATERIAL MAY BE USED AT THIS POINT TO PERMIT UNIFORM DOOR LATCHING.



ENGINEERING NOTE:

A DEADFRONT PANEL IS REQUIRED WHEN THE GROUP 3 CONTROL PANEL IS MOUNTED IN THE ENCLOSURE. CALLOUT COVER ASCO PN 627447-001-A & (4) MOUNTING SCREWS (PN 051379-071) IN BILL OF MATERIAL WHEN REQUIRED.



CHANGE LETTER	ECN NO.	BY	APP.	DATE
F	158990	BK	BK	10/01
SEE ECN				
E	157409	BK	BK	4/20/01
SEE ECN				
D	154915	SDH	SDH	6/15/00
SEE ECN				
C	155099	SDH	SDH	6/8/00
SEE ECN				
B	154697	SDH	SDH	5/18/00
SEE ECN				
A	154282	SDH	SDH	3/24/00
SEE ECN				
-	154151	SDH	SDH	3/8/00
ISSUE				

PROJECT NAME: ENCLOSURE TYPE 3R SERIES 165, 100/200A

THIRD ANGLE PROJECTION

MANUFACTURING TOLERANCES TO BE IN ACCORDANCE WITH ASCO PROCEDURE MP-1-003. FOR PLASTIC PARTS SEE MP-1-055.

PROPERTY OF ASCO POWER TECHNOLOGIES. USE PERMITTED FOR OUR WORK ONLY. ALL RIGHTS OF DESIGN OR INVENTION ARE RESERVED.

ASCO POWER TECHNOLOGIES, L.P.
FLORHAM PARK, NEW JERSEY 07932 U.S.A.

SCALE: ACAD FILE
SIZE: DWG. NO. DS709679
CHANGE LETTER: F ECN NO. 158990 SHEET