

- NOTES**
1. THE TRANSFER SWITCH AND CONTROL ARE SUPPLIED (ALL POWER OFF) WITH THE TRANSFER SWITCH CONTACTS CLOSED ON THE PREFERRED SOURCE.
 2. THE SOURCE O INDICATES USER CONNECTION POINTS TO BE TERMINATED BY A LICENSED ELECTRICIAN.
 3. THIS IS A THREE-PHASE UNIT - REFER TO THE MANUAL. A MANUAL IS SUPPLIED WITH THE TRANSFER SWITCH. REFER TO P. 4 AND THE GENERATOR INSTALLATION SECTION FOR THE CONNECTION AND OPERATION OF THE TRANSFER SWITCH.
 4. THE TRANSFER SWITCH AND ITS CONTROLS ARE LISTED UNDER THE UNDERWRITER LABORATORIES (UL) STANDARD FOR TRANSFER SWITCH EQUIPMENT, UL-1000.
 5. THE TRANSFER SWITCH MUST BE PROTECTED BY AN OVERCURRENT PROTECTIVE DEVICE (OCPD) AS SPECIFIED IN THE NATIONAL ELECTRICAL CODE (NEC/NFPA 70), ARTICLE 702.
 6. THE TRANSFER SWITCH MUST BE PROTECTED BY AN OVERCURRENT PROTECTIVE DEVICE (OCPD) AS SPECIFIED IN THE NATIONAL ELECTRICAL CODE (NEC/NFPA 70), ARTICLE 702.
 7. THE TRANSFER SWITCH MUST BE PROTECTED BY AN OVERCURRENT PROTECTIVE DEVICE (OCPD) AS SPECIFIED IN THE NATIONAL ELECTRICAL CODE (NEC/NFPA 70), ARTICLE 702.
 8. THE TRANSFER SWITCH MUST BE PROTECTED BY AN OVERCURRENT PROTECTIVE DEVICE (OCPD) AS SPECIFIED IN THE NATIONAL ELECTRICAL CODE (NEC/NFPA 70), ARTICLE 702.
 9. THE TRANSFER SWITCH MUST BE PROTECTED BY AN OVERCURRENT PROTECTIVE DEVICE (OCPD) AS SPECIFIED IN THE NATIONAL ELECTRICAL CODE (NEC/NFPA 70), ARTICLE 702.

POWER CONNECTIONS

SIZES OF UL LISTED SOLID BRASS SCREW TYPE TERMINALS FOR MAIN POWER CONNECTIONS

SWITCH (AMPS)	WIRE SIZE (AWG)	TERMINAL SIZE (INCHES)
100-200	ONE #14 TO 6/0 AWG	ONE #14 TO 6/0 AWG

CYCLE OF WORK

TS FRAME SIZE	POLES	WIRE SIZE (AWG)	CONTROL CODE	INSULATION CODE
0	105	4	2	200
1	105	4	2	200
2	105	4	2	200
3	105	4	2	200
4	105	4	2	200
5	105	4	2	200
6	105	4	2	200

WIRING DIAGRAM

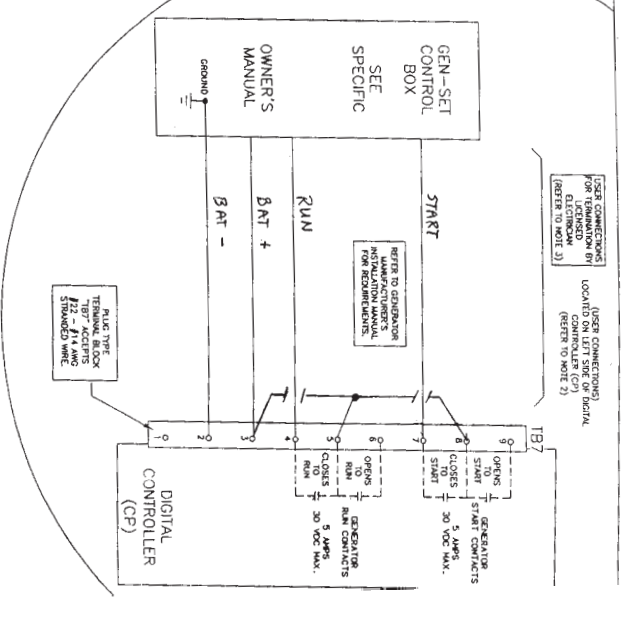
ASSA 165 SERIES

AUTOMATIC TRANSFER SWITCH WITH GROUP 3 DIGITAL CONTROLLER

RAISED 240 VAC (MANUAL)

FOR USE IN OPTIONAL STAND-BY SYSTEMS

WIRE SIZE (AWG)	TERMINAL SIZE (INCHES)	INSULATION CODE
14	1/8	200
12	1/8	200
10	1/8	200
8	1/8	200
6	1/8	200
4	1/8	200
2	1/8	200



Automatic Switch Co., Richmond Park, N.J. USA

DATE	REV.	DESCRIPTION
1/23	1	ISSUE
1/23	2	REVISED
1/23	3	REVISED
1/23	4	REVISED
1/23	5	REVISED
1/23	6	REVISED
1/23	7	REVISED
1/23	8	REVISED
1/23	9	REVISED
1/23	10	REVISED

DS 702704-008