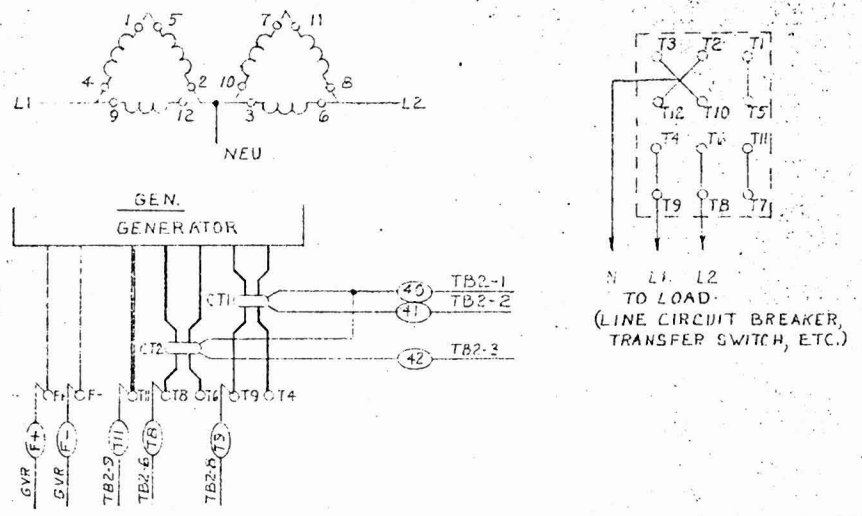


**SINGLE PHASE DELTA (12 LEAD RECONNECTABLE)**  
120/240V 60 HZ - 110/220 V 50 HZ.



N L1 L2  
TO LOAD  
(LINE CIRCUIT BREAKER,  
TRANSFER SWITCH, ETC.)

FIGURE 1.

**SINGLE PHASE (4 LEAD)**  
120/240 V, 60 HZ - 110/220 V 50 HZ

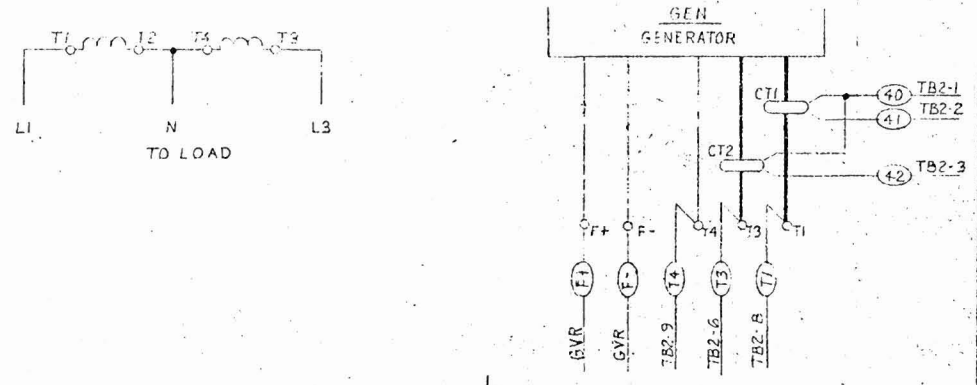
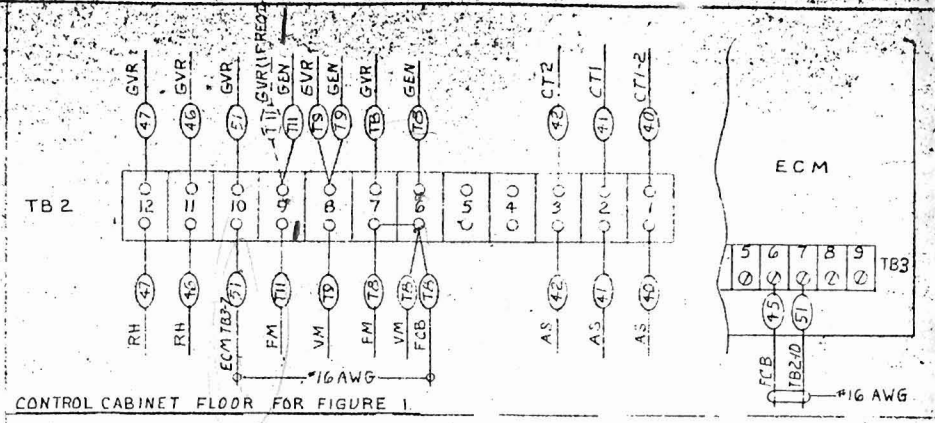
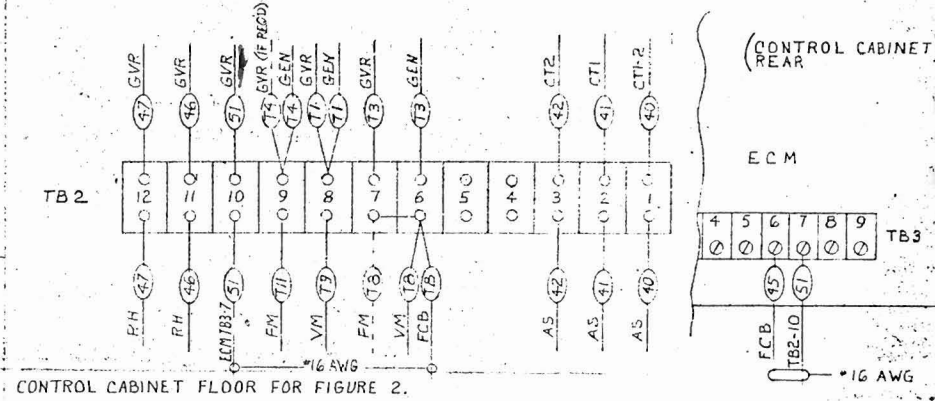


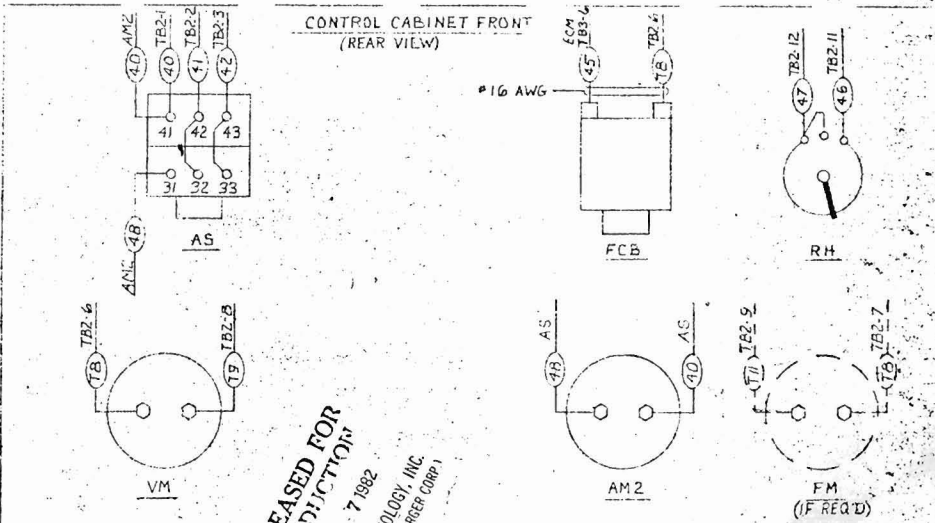
FIGURE 2.



CONTROL CABINET FLOOR FOR FIGURE 1.



CONTROL CABINET FLOOR FOR FIGURE 2.



CONTROL CABINET FRONT  
(REAR VIEW)

RELEASED FOR PRODUCTION  
JAN 7 1982  
DINA TECHNOLOGY, INC.  
(formerly DINA ENGINEER CORP.)

- NOTES:
1. ALL INTERNAL CONTROL CABINET WIRES ARE TO BE # 20AWG EXCEPT AS NOTED
  2. ALL INTERCONNECTING WIRES BETWEEN TB2 AND GENERATOR SET ARE TO BE #16AWG.
  3. FOR VOLTAGE REGULATOR CONNECTION SEE DRAWING D-93537

ALL DIMENSIONS GIVEN IN INCHES—WORK TO DIMENSIONS—DO NOT SCALE—SAMPLES MUST BE APPROVED BY DYMA TECHNOLOGY ENGINEERING DEPT BEFORE PROCEEDING WITH PRODUCTION	
— TOLERANCES (UNLESS OTHERWISE SPECIFIED): FRACTIONS ± 1/64	
DECIMALS ± .005 PUNCHED HOLES ± .004 — .000 ANGLES ± 1°	
DRAWN BY	DATE
D.M.W.	12-18-81
CHK'D BY	DATE
L.A.	12-22-81
APP'D BY	DATE
L.N.	12-24-81
SCALE	
MATERIAL	
FINISH	
1C-93650	
A.C. WIRING AND	