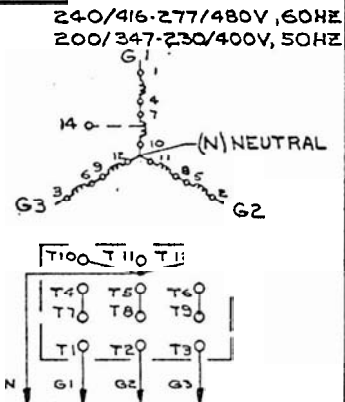


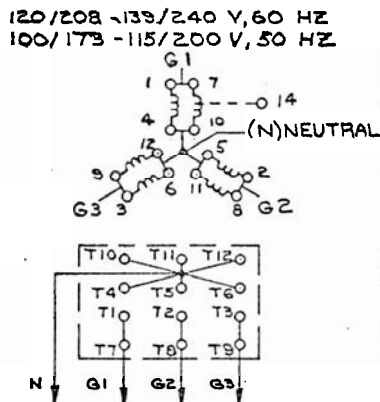
8.5526-01 THREE PHASE WYE



TO LOAD (LINE CIRCUIT BREAKER, TRANSFER SWITCH ETC)

FIGURE 1

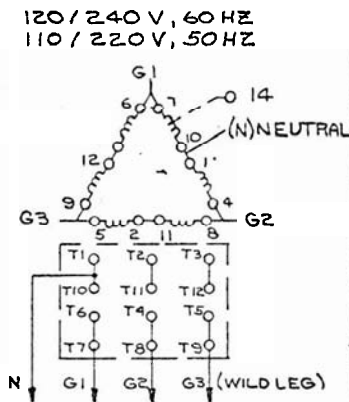
THREE PHASE WYE



TO LOAD (LINE CIRCUIT BREAKER, TRANSFER SWITCH ETC)

FIGURE 2

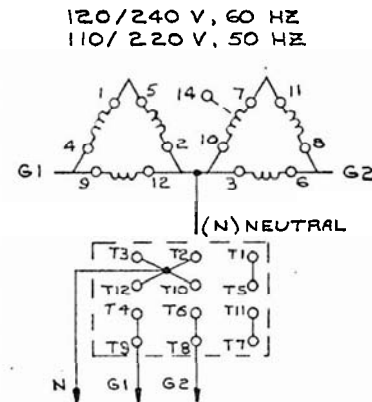
THREE PHASE DELTA



TO LOAD (LINE CIRCUIT BREAKER, TRANSFER SWITCH ETC)

FIGURE 3

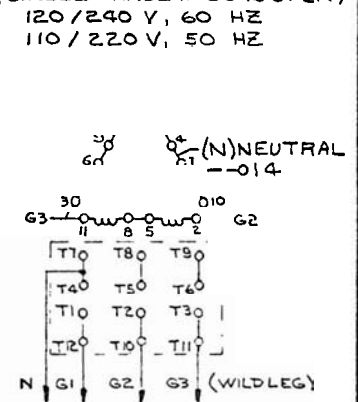
SINGLE PHASE DELTA



TO LOAD (LINE CIRCUIT BREAKER, TRANSFER SWITCH ETC)

FIGURE 4

THREE PHASE DELTA (SINGLE PHASE IF G3 IS OPEN)



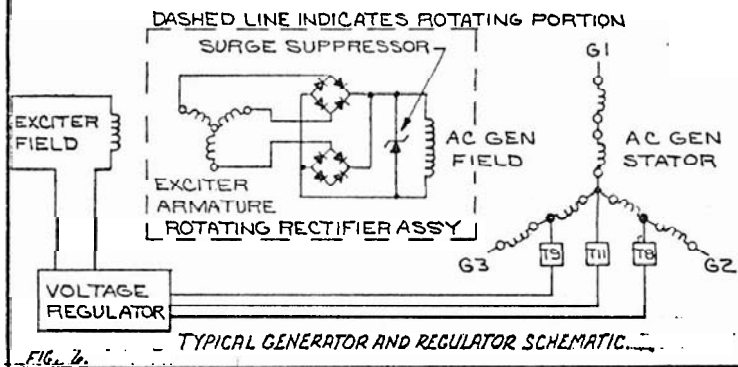
TO LOAD (LINE CIRCUIT BREAKER, TRANSFER SWITCH ETC)

FIGURE 5

NOTE.

1. TAPE OFF OPTIONAL LEAD (14) UNLESS GENERATOR IS CONNECTED FOR 277/480 VOLTS 60 HZ AND A 120 VOLT RECEPTACLE WITH 15 AMP CIRCUIT BREAKER IS CONNECTED TO IT. (SEE FIG 9)
2. EITHER FIGURE 3 OR FIGURE 5 MAY BE USED FOR THE THREE PHASE DELTA CONNECTION. GENERATOR SETS BUILT BY WINCO, USE FIG. 3 FOR WATER-COOLED MODELS, AND FIG 5 FOR AIR-COOLED MODELS.

3. THREE PHASE DELTA CONNECTIONS MAY BE USED FOR THE SINGLE PHASE APPLICATIONS BY OMITTING LOAD CONNECTIONS TO "G3".



TYPICAL GENERATOR AND REGULATOR SCHEMATIC

KRAFF VOLT. REGULATOR CONNECTION
12 OR 13 LEAD WATER COOLED
GEN SETS (FOR USE WITH
FIGURES 1 THRU 4)

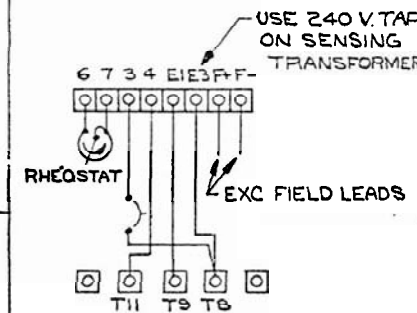


FIGURE 7

ALTERNATE KRAFF VOLT. REGULATOR
CONNECTION; 12 OR 13 LEAD
GENERATOR COMPONENTS, AIR
COOLED GENERATOR SETS AND
SWITCHABLE VOLTAGE SETS

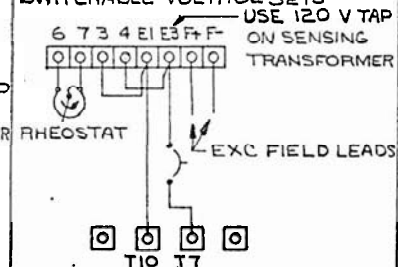


FIGURE 8

CONNECTION DIAGRAM FOR
OPTIONAL RECEPTACLE

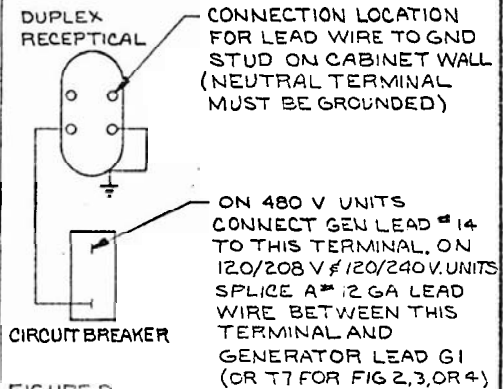


FIGURE 9

XR2004 VOLTAGE REGULATOR CONNECTION FOR 12 OR 13
LEAD GENERATOR COMPONENTS (FOR USE WITH FIGURES 1 THRU 3.)

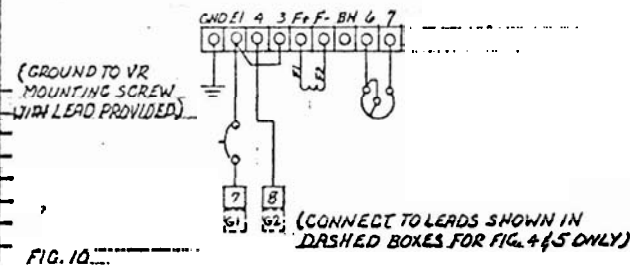


FIG. 10

ALL DIMENSIONS GIVEN IN INCHES—WORK TO DIMENSIONS—DO NOT SCALE—SAMPLES MUST BE APPROVED BY DYNA TECHNOLOGY ENGINEERING DEPT BEFORE PROCEEDING WITH PRODUCTION

TOLERANCES (UNLESS OTHERWISE SPECIFIED): FRACTIONS ± 1/64 DECIMALS ± .005 PUNCHED HOLES ± .004 ± .000

DRAWN BY	DATE	CHKD BY	DATE	APPR BY	DATE	SCALE
SB	7-22-80	LK	7/23/80	J.P.	7/24/80	

REV	DESCRIPTION	DATE	BY	AUTH
1	ORIGINAL			
2	ADDED FIG. 10	10/21/80	LK	
3	REVISED	1/28/81	LK	
4	REVISED	1/28/81	LK	

DIAGRAMS-12 & 13 LEAD GEN CONNECTIONS

WINCO Division of DYNA TECHNOLOGY, INC. C-92558
LeCenter, MN 55057