

Wiring Diagram C55357  
 Schematic N/A  
 Generator Parts  
 Unassembled C55334  
 Complete Unit  
 Part # C55335

\*\*\*\*\*  
 REPAIR  
 PARTS LIST  
 #483  
 \*\*\*\*\*

Size 7000 Watts  
 Drive Direct  
 Type Two Pole  
 Unit Model # 7WH-3E/B

<u>DESCRIPTION</u>	<u>PART #</u>	<u>QTY.</u>	<u>DESCRIPTION</u>	<u>PART #</u>	<u>QTY.</u>
Armature	55329-1	1	Control Box Assy.	55354	1
Armature Bearing	50215	1	Cover Assy.	49627	1
Armature Thru Bolt	24195	1	Front Panel (Bare)	56976-1	1
			Rear Panel (Bare)	55350	1
Fan Assy.	23404	1	Receptacle (115)	24749	2
Fan Washer	23558	1	Receptacle (230)	56281	1
Fan Lockwasher	40552	1	Resistor (Charge)	54599	1
Fan Nut	23605	1	Diode Assy.	54023-1	1
			Start Stop Switch	23772	1
Field Coil	55332	1	Start Solenoid	24061	1
Field Coil	55332-1	1	Conserver Assy. <sup>50615097-002</sup>		
Shell & Bracket Assy.	55340	1	(Complete)	55697	1
Pole Shoe	43473	2	Module	48574	1
Pole Shoe Retainer	43474	2	Transformer	40450	2
Engine Adaptor Brkt.	55493	1	Electro Magnet	44889	1
Adaptor Brkt. Screw	24707	4	Formed Bracket	51788	1
End Cover Assy.	55007	1	Lever (Throttle)	51787	1
			Resistor	80132-3	1
Brush Rack Assy.	55657	1	Switch	24238	1
(Complete)	& -1	1	Cover	44891	1
A. C. Brush	55536	9	Cover Nut	44948	1
A. C. Brush Holder	23500	9	Band	51801	1
D. C. Brush	47683	2			
D. C. Brush Holder	47684	1			
& Plate Assy.	& -1	1			
A. C. Condenser	41221	2			
D. C. Condenser	41180	1			
Cradle	55045-1	1			
Shock Mounts	20191	6			

ENGINE MAKE Wisconsin MODEL # S14D PART # 54745

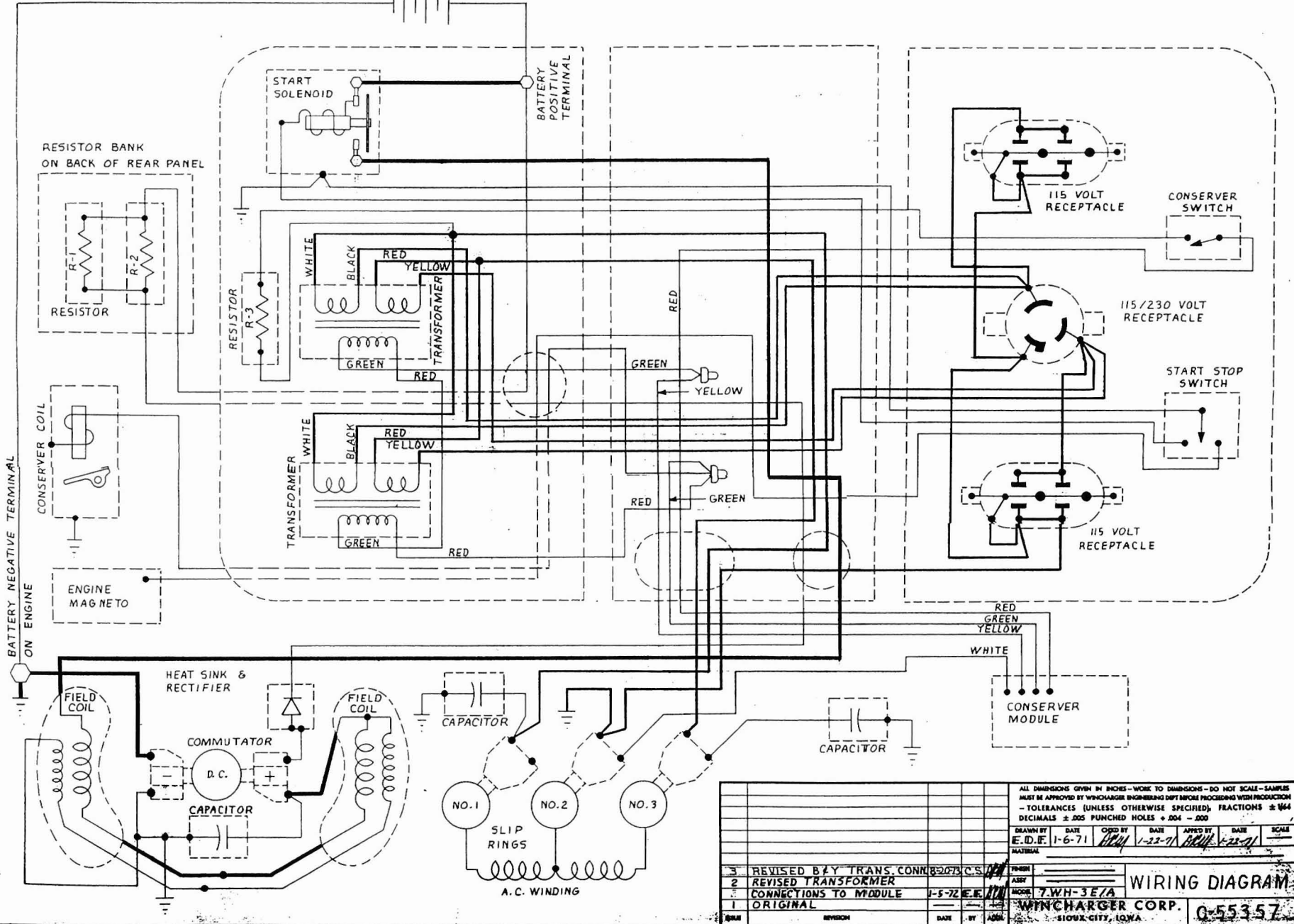


Division of Dyna Technology, Inc.  
 225 South Cordova St. / LE CENTER, MINNESOTA 56057  
 Phone: (612) 357-6821

RPL#483

Feb. 78

BATTERY CIRCUIT (FOR REF. ONLY)



ALL DIMENSIONS GIVEN IN INCHES—WORK TO DIMENSIONS—DO NOT SCALE—SAMPLES MUST BE APPROVED BY WINCHARGER ENGINEERING DEPT BEFORE PROCEEDING WITH PRODUCTION—TOLERANCES (UNLESS OTHERWISE SPECIFIED) FRACTIONS ± 1/64 DECIMALS ± .005 PUNCHED HOLES ± .004 ± .005												
DRAWN BY	DATE	CHG BY	DATE	APP'D BY	DATE	SCALE						
E.D.F.	11-6-71	HEM	1-22-71	BEH	1-22-71							
MATERIAL												
3	REVISED B.Y. TRANS. CONN.	850/73	C.S.									
2	REVISED TRANSFORMER											
3	CONNECTIONS TO MODULE	1-5-72	E.E.									
1	ORIGINAL											
REVISION	DATE	BY	APP'D									
<table border="1"> <tr> <td>FIGURE</td> <td>7.WH-3E/A</td> </tr> <tr> <td>MODEL</td> <td>WINCHARGER CORP.</td> </tr> <tr> <td>DATE</td> <td>SIoux CITY, IOWA</td> </tr> </table>							FIGURE	7.WH-3E/A	MODEL	WINCHARGER CORP.	DATE	SIoux CITY, IOWA
FIGURE	7.WH-3E/A											
MODEL	WINCHARGER CORP.											
DATE	SIoux CITY, IOWA											

WIRING DIAGRAM

C-5535-7