

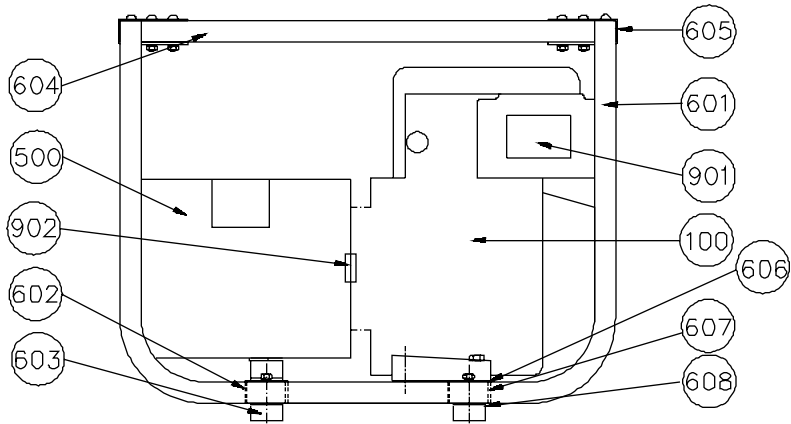
# DYNA

## LC SERIES

3000 THROUGH 5000 WATTS

### PARTS LISTS AND WIRING DIAGRAMS

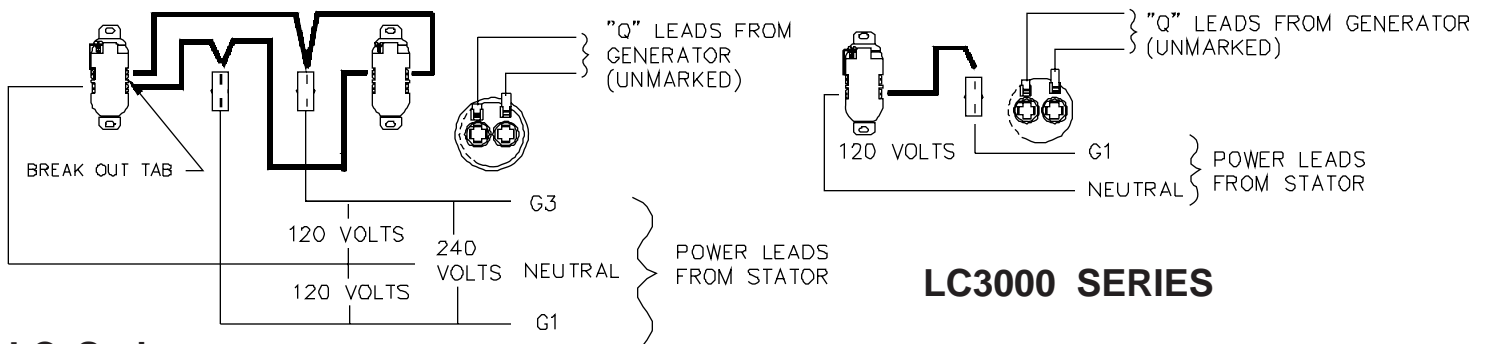
#### COMPLETE UNIT ASSEMBLY



REF	DESCRIPTION	QTY	LC3000VM	LC3000IM	LC3000HM	LC4500VM LC4500IM	LC5000HM
100	Engine type	1	135232 0038-01	133232 0038-01	GX160KIVX	190412 6005-01 195432 (I) 1070-01	GX270VA
500	Generator Assembly	REF	15359-002	15359-008	15359-002	15359-003	15359-007
601	Cradle Half	2	15827-000	15827-000	15827-000	15306-001	15306-001
602	Generator Crossmember	1	15327-000	15327-000	15327-000	15305-000	15556-000
603	Rubber Shockmounts	4	20191-000	20191-000	20191-000	15873-000	15873-000
604	Cradle Top Member	1	15828-000	15828-000	15828-000	15823-000	15823-000
605	Cradle Clamps	2	15802-000	15802-000	15802-000	15802-000	15802-000
606	Spacer Washer	2	23558-000	23558-000	23558-000	NOT USED	NOT USED
606	Support Crossmember	1	NOT USED	NOT USED	NOT USED	15842-000	NOT USED
607	Engine Crossmember	1	15327-000	15327-000	15327-000	15824-000	15556-000
608	Flat Washer	4	23760-000	23760-000	23760-000	23760-000	23760-000
901	Safety Decal Set	1	15209-000	15209-000	15209-000	15209-000	15209-000
902	Pilot Spacer	1	NOT USED	15553-000	15553-000	NOT USED	NOT USED

GENERATOR RESISTANCES	SS	NBR	ROTOR	G1 to N	G3 to N	CAP LEADS	
LC4500 through LC5000	SS	1541		0.79-0.87	0.61-0.67	0.61-0.67	2.10-2.33
LC3000 Series	SS	1540		0.83-0.92	0.52-0.57		1.68-1.87

#### WIRING DIAGRAMS

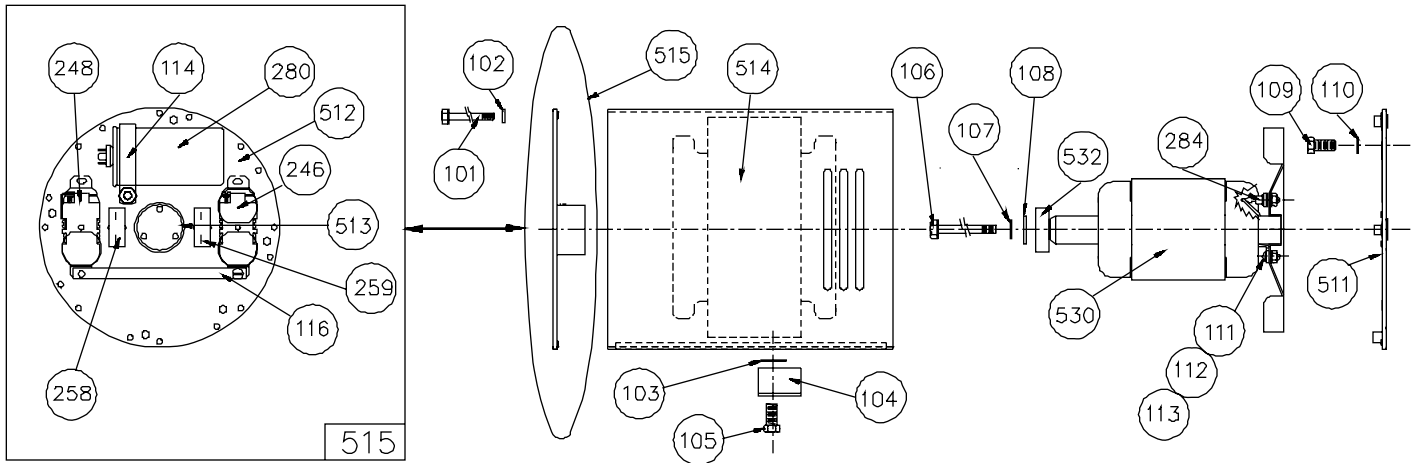


LC Series  
4500 through 5000 Watts

LC3000 SERIES

**WINCO**®  
INCORPORATED

## GENERATOR ONLY ASSEMBLY



REF	DESCRIPTION	QTY	LC3000W LC3000HM	LC3000IM	LC4500W LC4500IM	LC5000HM
	Generator Complete	REF	15359-002	15359-008	15359-003	15359-007
101	Stud 1/4-20	4	15530-002	15530-002	15530-003	15530-003
102	Lockwasher 1/4	4	479-000	479-000	479-000	479-000
103	Flatwasher 5/16	1	Not Used	Not Used	526-000	526-000
104	Support Bracket	1	Not Used	Not Used	15545-000	15545-000
105	Stud 5/16-18 X 3/4	1	62173-000	62173-000	62173-000	62173-000
106	Thrubolt 5/16-24	1	15529-001	15529-001	15529-001	15529-001
107	Lockwasher 5/16	1	480-000	480-000	480-000	480-000
108	Flatwasher	1	23558-000	23558-000	23558-000	23558-000
109	Stud 5/16-24 X 5/8	4	57199-000	57199-000	464-000	464-000
110	Lockwasher 3/8	4	480-000	480-000	481-000	481-000
111	Screw #10-32 X 3/8	1	599-000	599-000	599-000	599-000
112	Lockwasher #10	1	484-000	484-000	484-000	484-000
113	Hex Nut #10-32	1	6372-000	6372-000	6372-000	6372-000
114	Capacitor Bracket	1	15374-002	15374-002	15374-002	15374-002
116	Ground Strap	1	Not Used	Not Used	64045-006	64045-006
246	Receptacle 240 Volts	1	Not Used	Not Used	40452-000	40452-000
248	Receptacle 120 Volts	1	24749-000	24749-000	24749-000	24749-000
258	Circuit Breaker	1	91286-001	91286-001	91286-001	91286-001
259	Circuit Breaker	1	Not Used	Not Used	91286-001	91286-001
280	Capacitor	1	15051-000	15051-000	15051-000	15051-000
284	Diode (std)	1	15047-001	15047-001	15047-001	15047-001
511	Engine Mounting Brkt	1	15366-000	15597-000	15367-000	15367-001
512	Bearing Brkt (bare)	1	15391-002	15391-002	15391-001	15391-001
513	Tolerance Ring	1	15122-000	15122-000	15122-000	15122-000
514	Stator & Shell Assy.	1	15359-412	15359-412	15359-413	15359-413
515	Bearing Brkt Assy	1	15364-000	15364-000	15365-000	15365-000
530	Rotor Assembly	1	15359-422	15359-422	15359-421	15359-421
532	Bearing	1	55223-000	55223-000	55223-000	55223-000

**WINGCO**®  
INCORPORATED  
225 S. Cordova Ave.  
LeCenter, Mn 56057

Phone - (612) 357-6831  
FAX - (612) 357-4857