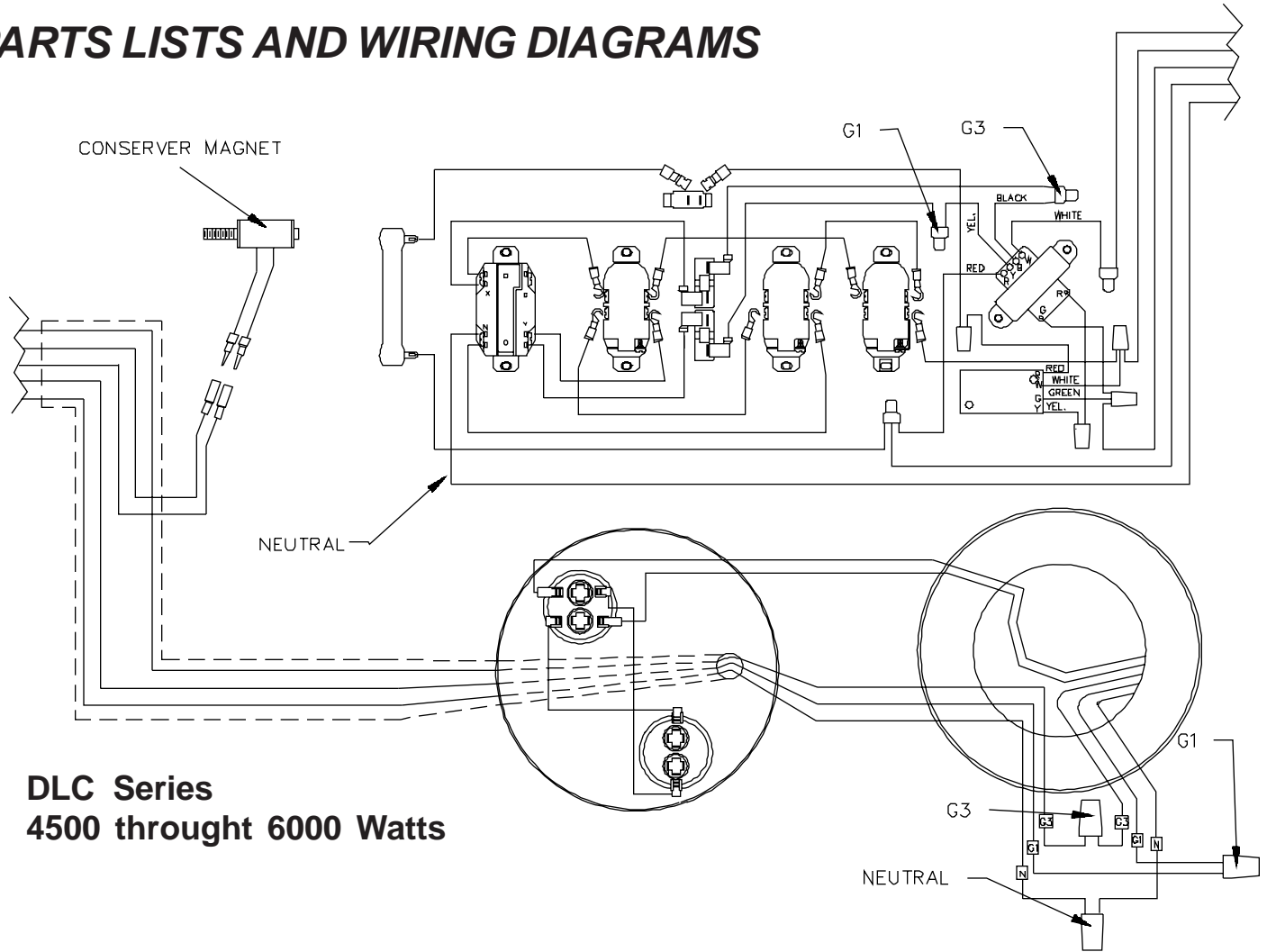


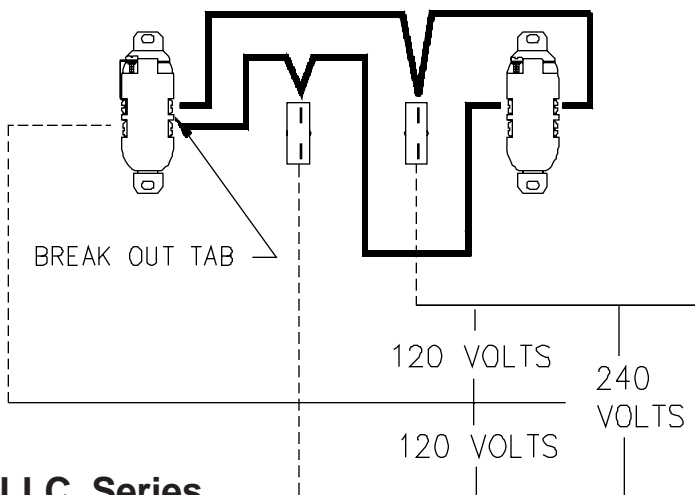
DYNA

DLC & LLC SERIES 4500 THROUGH 6000 WATTS

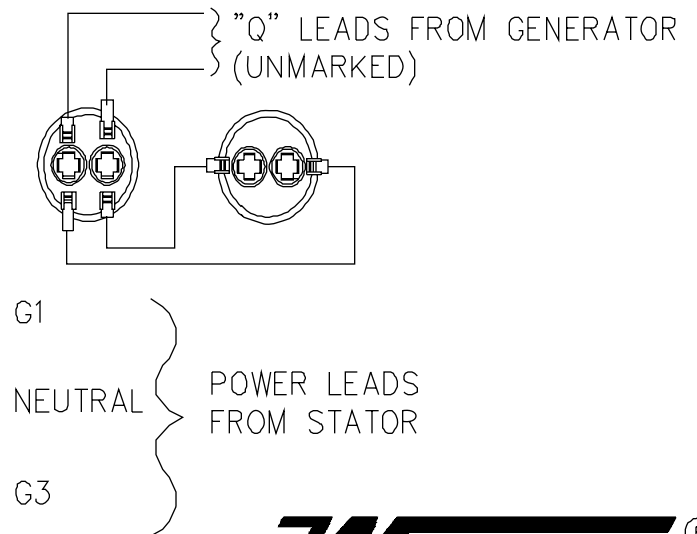
PARTS LISTS AND WIRING DIAGRAMS



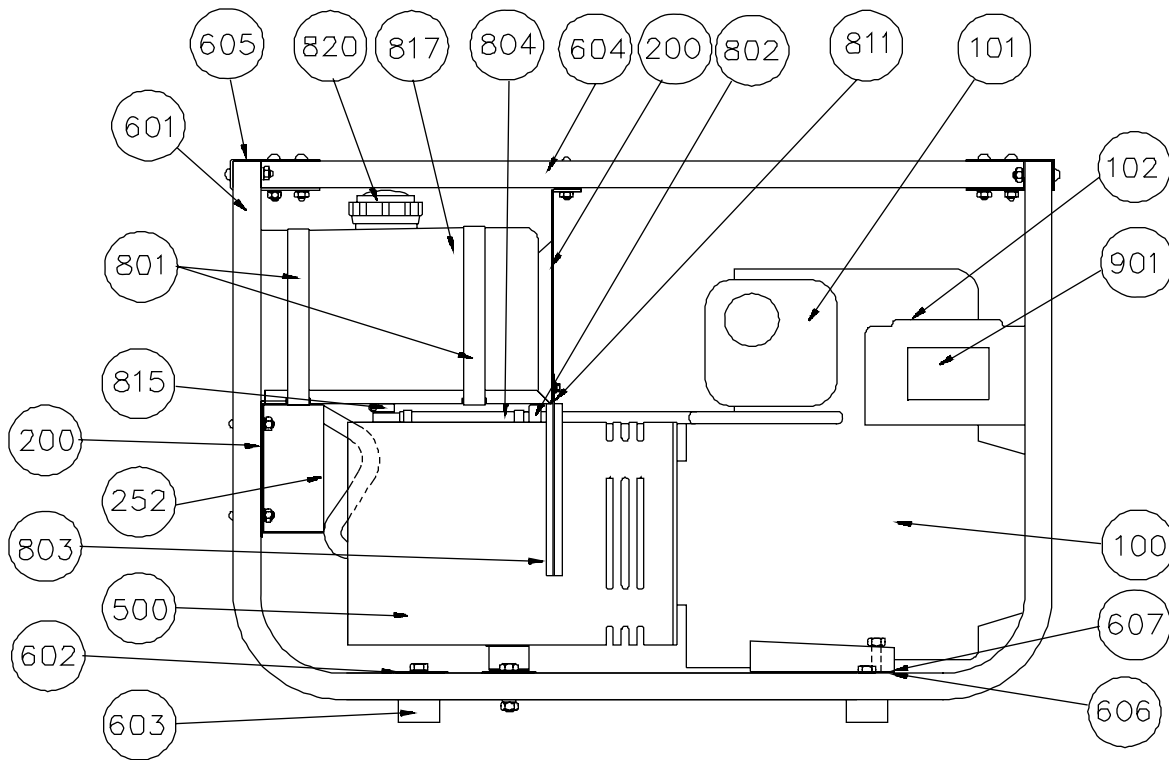
DLC Series
4500 through 6000 Watts



LLC Series
4500 through 6000 Watts

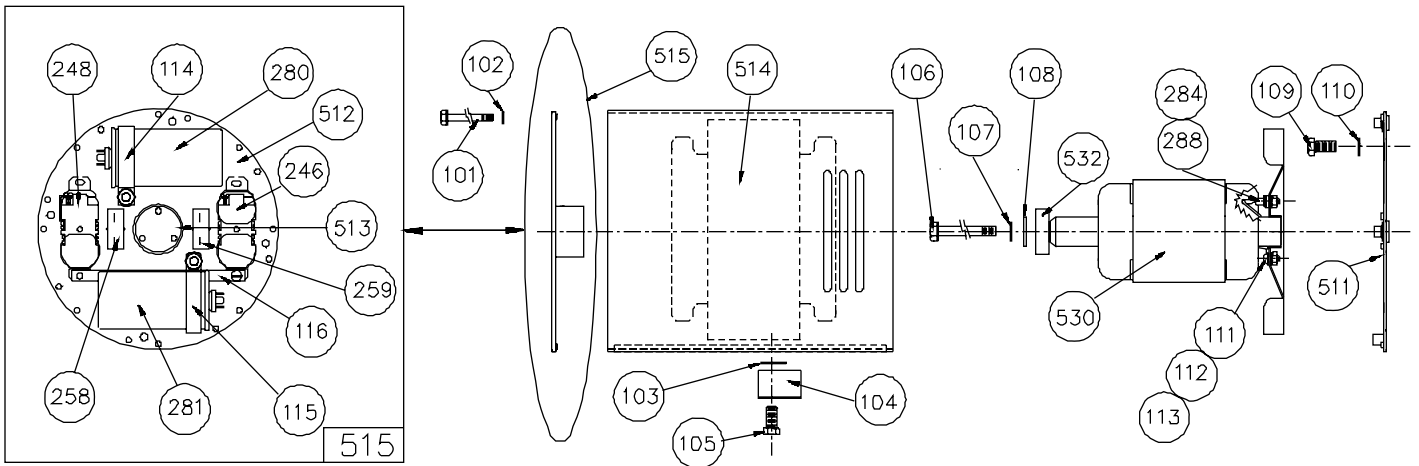


COMPLETE UNIT ASSEMBLY



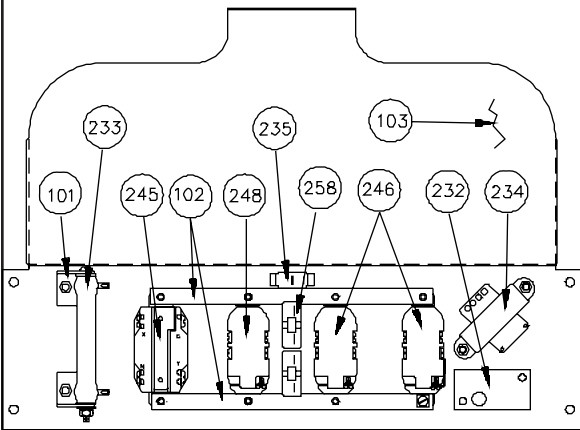
REF	DESCRIPTION	QTY	LLC4500(E)	DLC4500	LLC5000H	LLC6000	DLC6000E
100	Engine	1	190432 (6141-01) 190437 (E) (6006-01)	195432 (1007-01)	GX270VA	252412 (5149-01)	254427 (0560-01)
101	Muffler	1	15610-000	56923-700	Honda	Briggs	Briggs
102	Conservar Assembly	1	Not Used	15184-000	Not Used	Not Used	15183-001
200	Control/Support Panel	1	15462-001	15877-001	15462-001	15462-001	15584-001
252	Back Panel	1	Not Used	15463-001	Not Used	Not Used	15463-001
500	Generator Assembly	REF	15359-003	15359-001	15359-007	15359-004	15359-005
601	Cradle Half	2	15453-001	15453-001	15453-001	15876-000	15876-000
602	Cradle Cross Member	2	15305-000	15305-000	15556-000	15506-000	15506-000
603	Rubber Shockmounts	4	15873-000	15873-000	15873-000	15873-000	15873-000
604	Cradle Top Member	1	15823-002	15823-002	15823-002	15881-000	15881-000
605	Cradle Clamps	2	15802-000	15802-000	15802-000	15802-000	15802-000
606	Support Crossmember	1	15842-000	15842-000	Not Used	Not Used	Not Used
607	Engine Cross Member	1	15824-000	15824-000	15556-000	15506-000	15506-000
801	Tank Mounting Straps	2	15483-400	15483-400	15483-400	15483-400	15483-400
802	Fuel Filter	1	62496-000	62496-000	62496-000	62496-000	62496-000
803	Heat Shield Gasket	1	Not Used	Not Used	Not Used	Not Used	15287-000 (1.6 FT)
804	Fuel Line	1	40078-000 (1.15 FT)	40078-000 (1.15 FT)	40078-000 (1.6 FT)	40078-000 (.34 FT)	40078-000 (.34 FT)
811	Heat Shield	1	Not Used	Not Used	Not Used	Not Used	15520-000
815	Shutoff Valve	1	98771-000	98771-000	98771-000	98771-000	98771-000
817	Fuel Tank	1	64024-000	64024-000	64024-000	64024-000	64024-000
820	Fuel Cap	1	15482-000	15482-000	15482-000	15482-000	15482-000
901	Safety Decal Set	1	15209-000	15209-000	15209-000	15209-000	15209-000

GENERATOR ONLY ASSEMBLY



REF	DESCRIPTION	QTY	LLC4500(E)	DLC4500	LLC5000H	LLC6000	DLC6000E
Generator Complete	REF		15359-003	15359-001	15359-007	15359-004	15359-005
101	Stud 1/4-20	4	15530-003	15530-003	15530-003	15530-004	15530-004
102	Lockwasher 1/4	4	479-000	479-000	479-000	479-000	479-000
103	Flatwasher 5/16	1	526-000	526-000	526-000	526-000	526-000
104	Support Bracket	1	15545-000	15545-000	15545-000	15545-000	15545-000
105	Stud 5/16-18 X 3/4	1	62173-000	62173-000	62173-000	62173-000	62173-000
106	Thrubolt 5/16-24	1	15529-001	15529-001	15529-001	15529-002	15529-002
107	Lockwasher 5/16	1	480-000	480-000	480-000	480-000	480-000
108	Flatwasher	1	23558-000	23558-000	23558-000	23558-000	23558-000
109	Stud 3/8-16 X 3/4	4	464-000	464-000	464-000	464-000	464-000
110	Lockwasher 3/8	4	481-000	481-000	481-000	481-000	481-000
111	Screw #10-32 X 3/8	1	599-000	599-000	599-000	Not Used	Not Used
112	Lockwasher #10	1	484-000	484-000	484-000	Not Used	Not Used
113	Hex Nut #10-32	1	6372-000	6372-000	6372-000	Not Used	Not Used
114	Capacitor Bracket	1	15374-002	15374-002	15374-002	15374-002	15374-002
115	Capacitor Bracket	1	Not Used	Not Used	Not Used	15374-002	15374-002
116	Ground Strap	1	64045-006	Not Used	64045-006	64045-006	Not Used
246	Receptacle 240 Volts	1	40452-000	Not Used	40452-000	15504-000	Not Used
248	Receptacle 120 Volts	1	24749-000	Not Used	24749-000	50766-000	Not Used
258	Circuit Breaker	1	91286-001	Not Used	91286-001	91286-006	Not Used
259	Circuit Breaker	1	91286-001	Not Used	91286-001	91286-006	Not Used
280	Capacitor	1	15051-000	15051-000	15051-000	15051-000	15051-000
281	Capacitor	1	Not Used	Not Used	Not Used	15051-000	15051-000
284	Diode (std)	1	15047-001	15047-001	15047-001	15047-001	15047-001
288	Diode (rev)	1	Not Used	Not Used	Not Used	15047-002	15047-002
511	Engine Mounting Brkt	1	15367-000	15367-000	15367-001	15505-000	15505-000
512	Bearing Brkt (bare)	1	15391-001	15391-004	15391-001	15391-001	15391-004
513	Tolerance Ring	1	15122-000	15122-000	15122-000	15122-000	15122-000
514	Stator & Shell Assy.	1	15359-413	15359-411	15359-413	15359-414	15359-415
515	Bearing Brkt Assy	1	15365-000	15474-000	15365-000	15475-000	15476-000
530	Rotor Assembly	1	15359-421	15359-421	15359-421	15359-424	15359-424
532	Bearing	1	55223-000	55223-000	55223-000	55223-000	55223-000

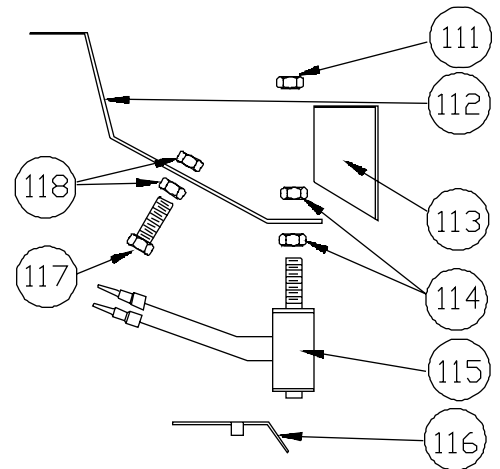
RECEPTACLE PANEL ASSEMBLY



REF	DESCRIPTION	QTY	DLC4500	DLC6000E
	Control Panel		REF 15877-001	REF 15884-001
101	Resistor Mtg Brkt	2	53997-000	53997-000
102	Grounding Strap	2	64045-001	64045-001
103	Front Panel	1	15878-001	15878-001
232	Conserver Module	1	48574-000	48574-000
233	Resistor	1	48583-000	48583-000
234	Transformer	1	40450-000	40450-000
235	Conserver Switch	1	64089-000	64089-000
245	Receptacle L14-30R	1	97360-000	97360-000
246	Receptacle 120 Volt	2	24749-000	50766-000
248	Receptacle 240 Volt	1	40452-000	15504-000
258	Circuit Breaker	2	91286-000	91286-001

CONSERVER ASSEMBLY

REF	DESCRIPTION	QTY	DLC4500	DLC6000E
	Conserver Assembly		REF 15184-000	REF 15183-001
111	Acorn Nut	1	44894-000	44894-000
112	Formed Mounting Brkt	1	44927-000	61096-000
113	Cover	1	44891-000	44891-000
114	Hex Jam Nut 5/16-24	2	44894-000	44894-000
115	Electro Magnet	1	15182-000	15182-000
116	Steel Extension	1	44892-000	44892-000
117	Cap Screw 5/16-18 X 2	1	91672-009	465-000
118	Hex Nut 5/16-18	2	458-000	458-000



GENERATOR WINDING RESISTANCES

MODEL	SS NBR	ROTOR	STATOR G1 TON	G3 TON	CAP. LEADS	STATOR CONN.
LLC4500	SS 1541	0.79-0.87	0.61-0.67	0.61-0.67	2.10-2.33	AC 367
LLC4500E	SS 1541	0.79-0.87	0.61-0.67	0.61-0.67	2.10-2.33	AC 367
DLC4500	SS 1541	0.79-0.87	0.61-0.67	0.61-0.67	2.10-2.33	AC 367
LLC5000H	SS 1541	0.79-0.87	0.61-0.67	0.61-0.67	2.10-2.33	AC 367
LLC6000	SS 1543	0.95-1.05	0.21-0.23	0.22-0.25	0.53-0.58	AC 367
DLC6000E	SS 1543	0.95-1.05	0.21-0.23	0.22-0.25	0.53-0.58	AC 367

WINCO®
INCORPORATED
225 S. Cordova Ave.
LeCenter, Mn 56057

Phone - (612) 357-6831
FAX - (612) 357-4857