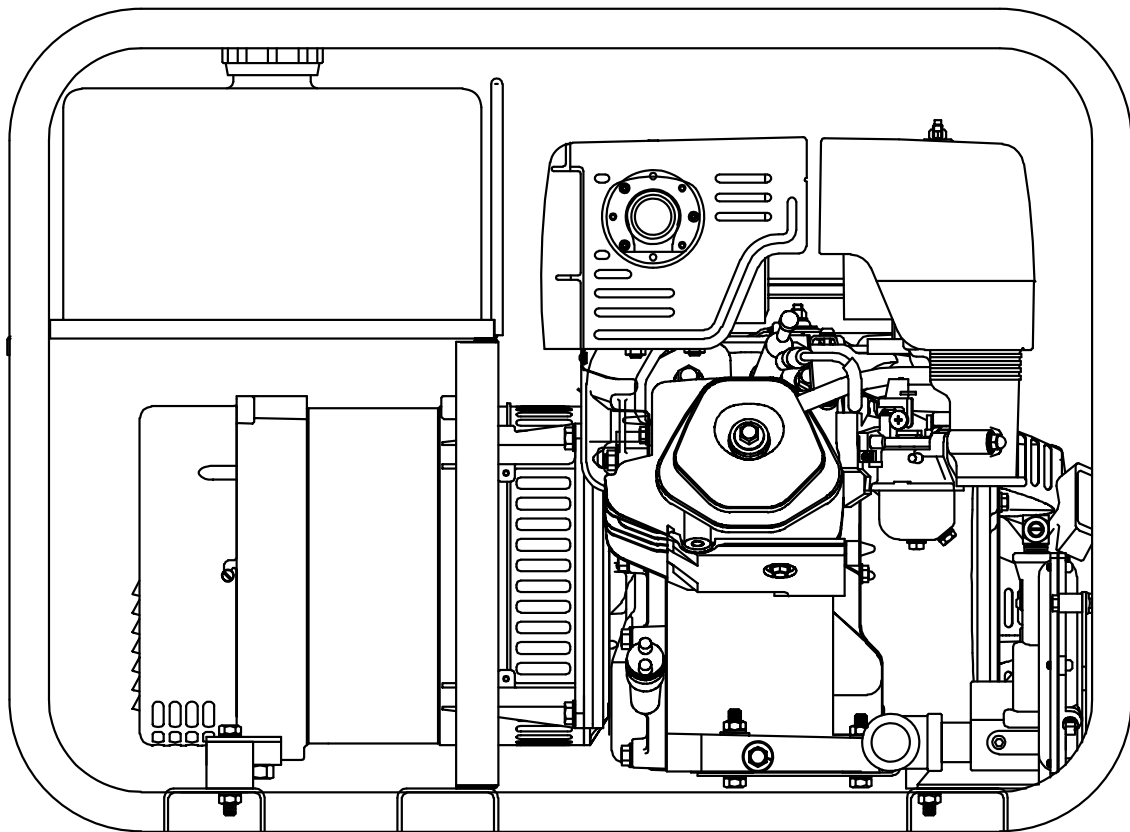
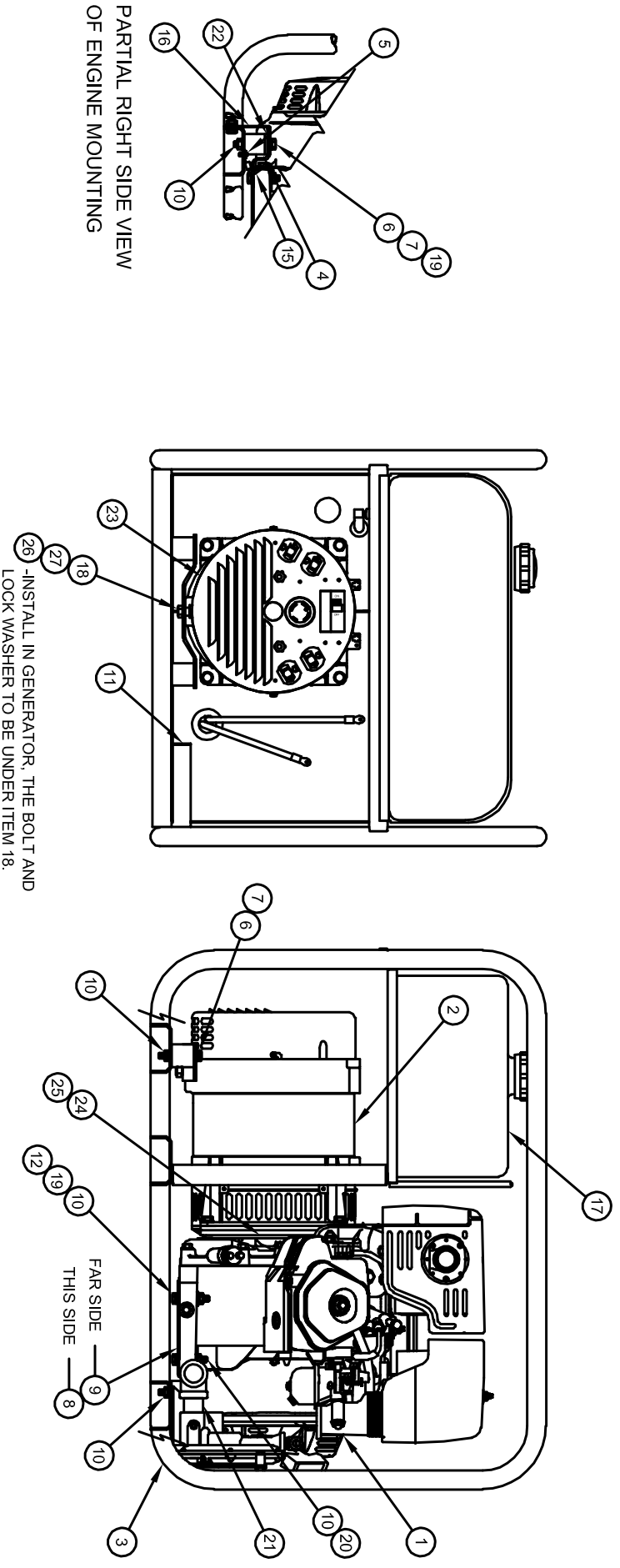


**ILLUSTRATED  
PARTS LIST**

**CSA HPS6000HE/F  
CSA HPS6000HE/G**



# GENERATOR ASSEMBLY CSA HPS6000HE/F



# GENERATOR ASSEMBLY

## CSA HPS6000HE/F

\* SEE DWG 15062-003 FOR REFERENCE.

36			
* 35	A-99671-000	1	#10-24 WHIZ NUT
34			
33			
* 32	A-95568-000	1	#10-24 X 5/8 THREADED STUD
* 31	A-16249-000	2	5/16-18 FLANGE NUT
* 30	A-477-000	2	5/16-18 X 5/8 HHCS
* 29	A-81018-008	2	CLAMP
28			
27	A-464-000	1	3/8-16 X 3/4 HHCS
26	A-16250-000	1	3/8-16 FLANGE NUT
25	481-000	4	SLW 3/8
24	A-91658-001	4	HHCS 3/8-16 x 1
23	B-15617-002	1	END COVER ASSEMBLY
22	A-23760-002	2	1.25 O.D. X .344 I.D. FLAT WASHER
21	B-15062-005	1	GAS KIT & INSTALLATION
20	468-000	2	5/16-18 X 1-1/2 HEX HD BOLT
19	A-526-000	2	FLAT WASHER
18	A-16335-000	1	SUPPORT, GENERATOR
17	B-15163-041	1	FUEL SYSTEM INSTALLATION
16	B-16161-008	1	SHIPPING RESTRAINT INSTALLATION
15	B-9769-145	1	LEAD WIRE ASSEMBLY
14	A-64668-062	1	LITERATURE PACKAGE & SHIPPING CONTAINER
13	B-15715-061	1	DECAL & NAMEPLATE INSTALLATION
12	9416-000	2	5/16-18 X 1.75 HEX HD BOLT
11	B-16175-002	1	BATTERY TRAY & CABLES INSTALLATION
10	16249-000	8	5/16 LOCKNUT
9	A-15929-002	1	SHOCKMOUNT ADAPTER BRACKET
8	A-15929-001	1	SHOCKMOUNT ADAPTER BRACKET
7	480-000	4	5/16 SPLIT LOCKWASHER
6	467-000	4	5/16-18 X 3/4 HEX HD BOLT
5	A-21698-001	1	#10 X 3/8 TYPE Z SELF TAPPING SCREW
4	A-64062-000	4	SHOCK MOUNTS
3	B-63073-011	1	WELDED CRADLE ASSEMBLY
2	A-16346-005	1	ORDERING SPEC., GENERATOR
1	B-15428-000	1	GASOLINE ENGINE
ITEM	PART NO	QUAN.	DESCRIPTION

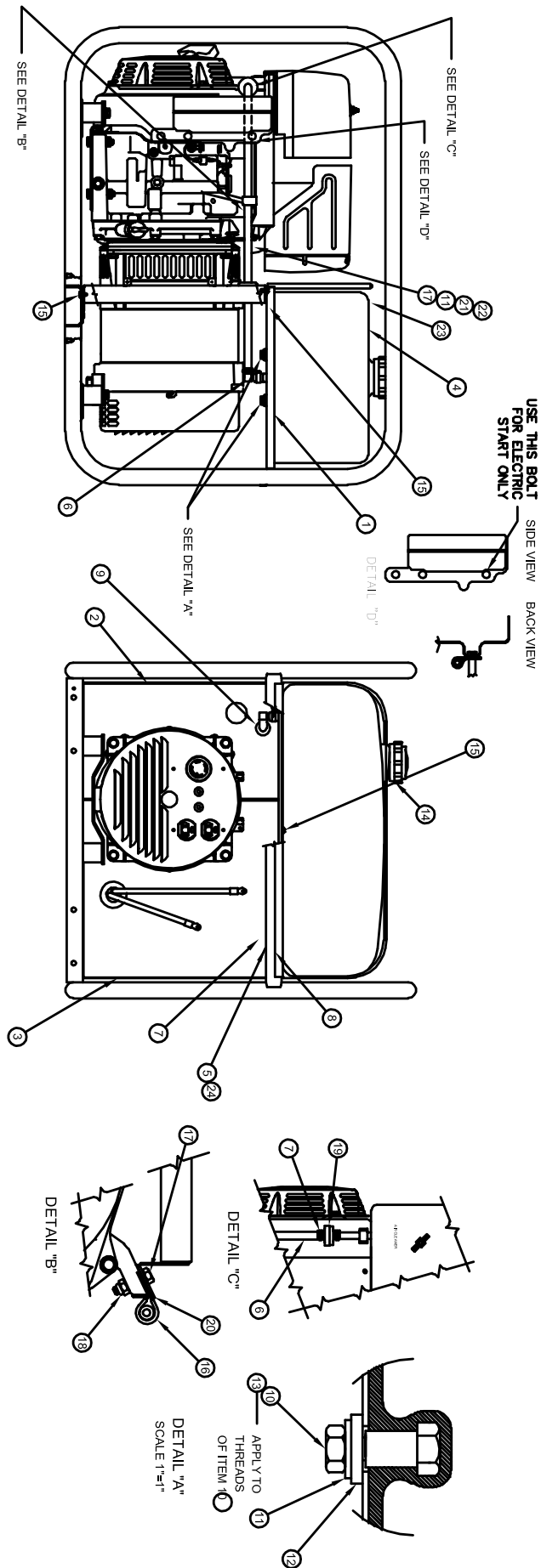
GENERATOR: MECC ALTE SPA  
 MODEL: S20W-95/A  
[www.meccalte.com](http://www.meccalte.com)

ENGINE: HONDA 9.5 H.P.  
 MODEL: GX340 RT1VWE2  
[www.honda-engines.com](http://www.honda-engines.com)

# FUEL SYSTEM ASSEMBLY

## CSA HPS6000HE/F

## CSA HPS6000HE/G



# FUEL SYSTEM ASSEMBLY

## CSA HPS6000HE/F

## CSA HPS6000HE/G

25	62999-005	1	HOSE CLAMP
24	61679-000	.001	PIPE SEALANT
23	A-58684-7	1	EDGE TRIM
22	479-000	1	1/4-20 LOCKWASHER
21	A-92495-000	1	1/4-20 NUT RETAINER
20	B-15679-002	1	ENGINE GOVERNOR COVER PLATE
19	A-62496-000	1	FUEL FILTER
18	16248-000	2	1/4-20 HEX LOCKING NUT
17	A-95281-000	3	1/4-20 X 1.25 HEX HD. BOLT
16	B-97391-002	2	CUSHIONED CLAMP
15	A-21698-001	11	#10 X 3/8 TYPE Z SELF TAPPING SCREW
14	A-15482-000	1	FUEL TANK CAP
13	A-81589-000	.01 OZ.	LOCKTITE
12	A-16133-000	2	3/4 O.D. X 1/4 I.D. X 1/8 THICK LEATHER WASHER
11	A-512-000	3	1/4 FLAT WASHER
10	466-000	2	1/4-20 X .75 HEX HD. BOLT
9	A-23917-000	1	GROMMET
8	A-81018-009	1	CLAMP
7	A-62999-001	2	FUEL HOSE CLAMP
6	A-40078-019	1	FUEL HOSE - 21"
5	A-56879-000	1	90° ELBOW
4	B-64024-000	1	4.5 GAL. FUEL TANK
3	B-15222-022	1	FUEL TANK RIGHT SUPPORT PANEL
2	B-15223-018	1	FUEL TANK LEFT SUPPORT PANEL
1	B-15462-022	1	FUEL TANK TRAY
ITEM	PART NO	QUAN.	DESCRIPTION

NOTE:

ADJUST CLAMP, ITEM (16) AS NECESSARY TO MAINTAIN  
LEVEL FUEL LINE FROM TANK FITTING TO FUEL FILTER

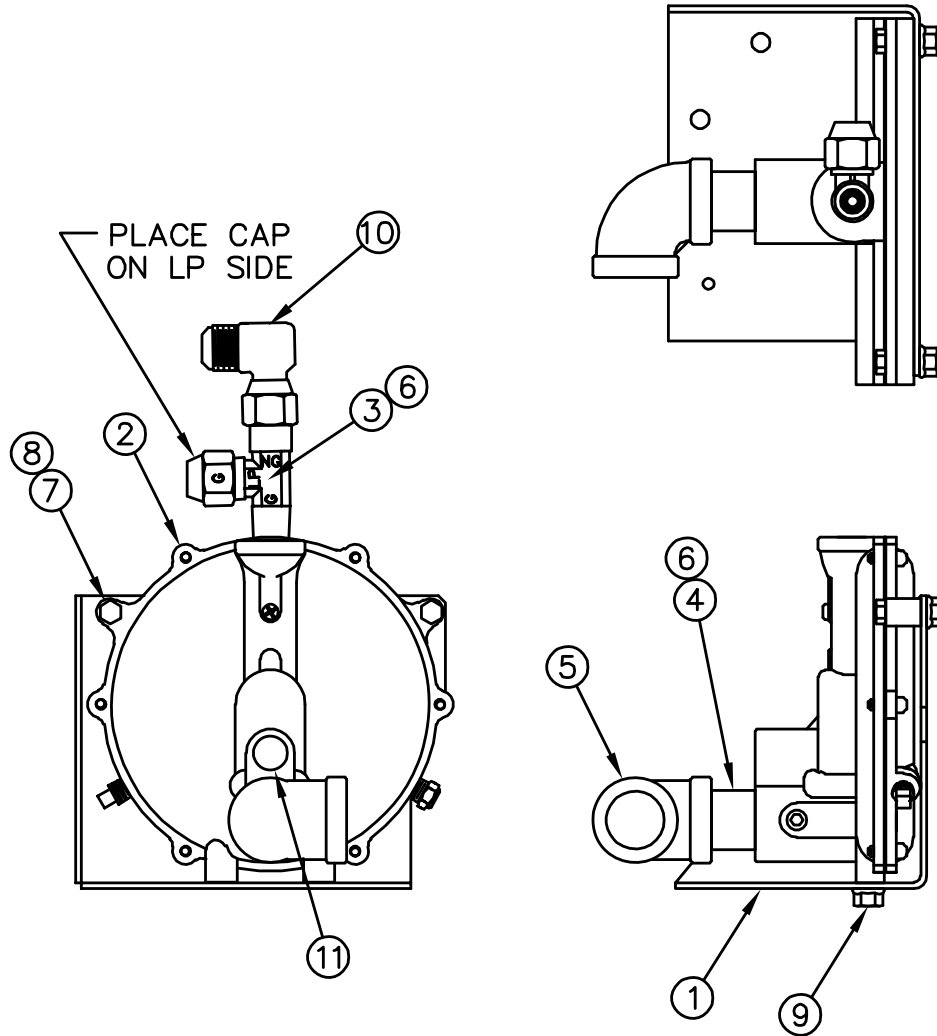
***WINCO INC***<sup>®</sup>  
A Division of **DTI** Dyna Technology Inc

**225 S. CORDOVA AVE.  
LECENTER, MN 56057  
507-357-6821  
SERVICE DEPT.  
507-357-6831**

# FUEL SYSTEM ASSEMBLY

## CSA HPS6000HE/F

## CSA HPS6000HE/G

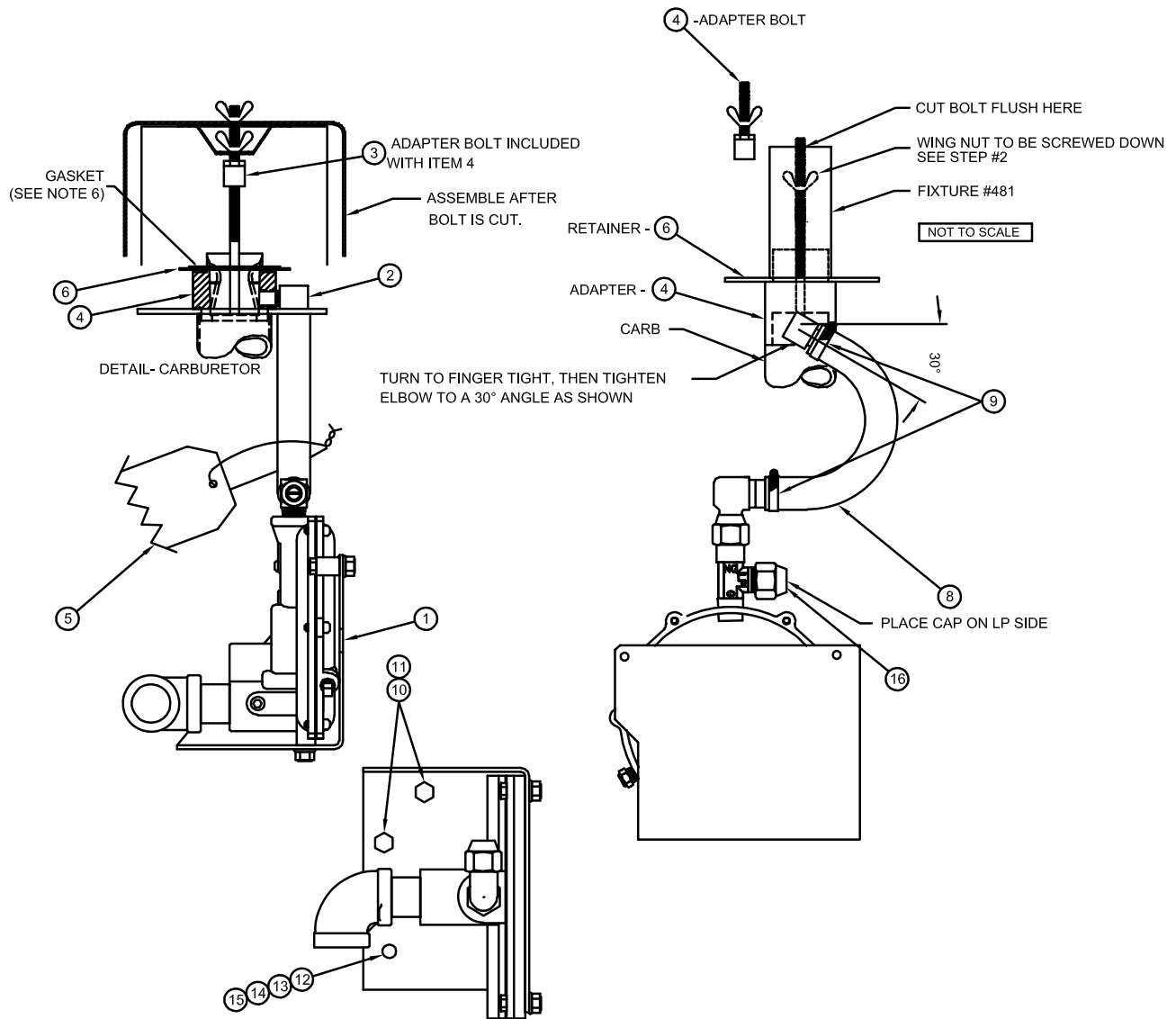


10	A-99968-000	1	45° FLARE FITTING – 90° SWIVEL ELBOW
9	A-55440-000	2	HHCS 1/4-20 x 1/2 SELF TAPPING
8	A-16248-000	2	FLANGE NUT 1/4-20
7	439-000	2	HHCS 1/4-20 x 1
6	A-61679-000	AR	SEALANT, PIPE
5	50244-000	1	ELBOW, 3/4" NPT x 90°
4	22626-000	1	PIPE NIPPLE, 3/4" NPT x CLOSE
3	A-99874-001	1	TEE FITTING
2	A-55559-002	1	GAS REGULATOR
1	A-16336-000	1	SUPPORT, GAS REGULATOR
ITEM	PART NO	QUAN.	DESCRIPTION

# GAS KIT & INSTALLATION

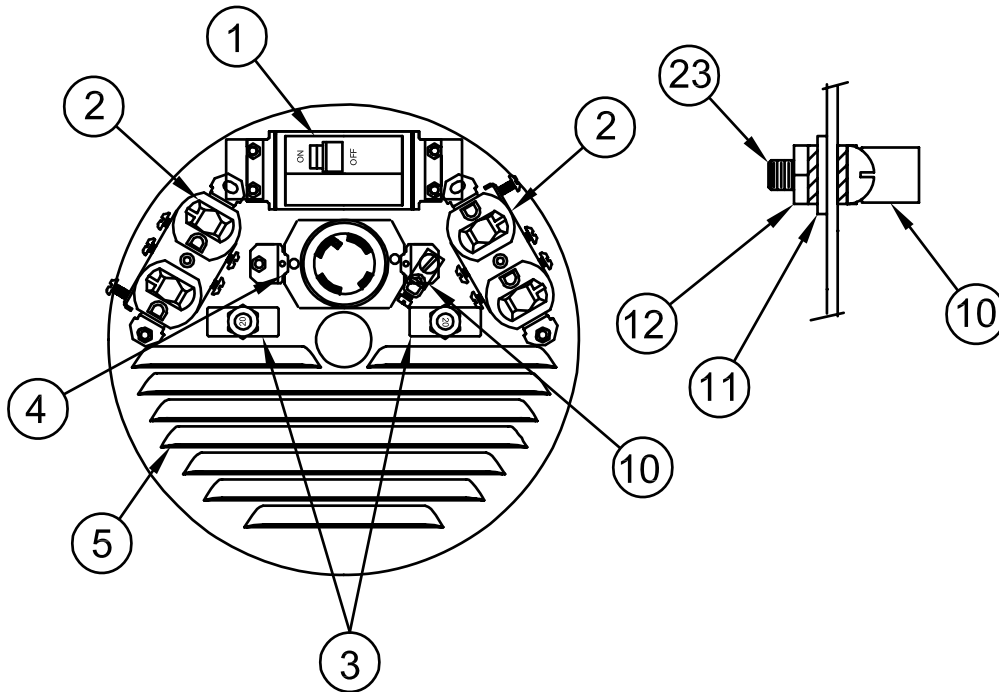
## CSA HPS6000HE/F

## CSA HPS6000HE/G



16	A-350892-3	1	FITTING, HOSE 45 DEG. FLARE
15	456-000	1	#10-24 HEXNUT
14	484-000	1	#10 SPLIT LOCKWASHER
13	598-000	1	#10 FLAT WASHER
12	A-95568-000	1	#10-24 X 5/8 THREAD STUD
11	A-16249-000	2	5/16-18 HEX FLANGENUT
10	477-000	2	5/16-18 x 5/8 HEX HEAD BOLT
9	A-81018-008	2	CLAMP
8	A-23048-003	1	HOSE (9.5')
7	A-61679-000	.001	PIPE SEALANT
6	A-91345-001	1	RETAINER
5	A-56596-001	1	TAG FUEL LP-NG SWITCH PROCEDURE
4	A-63581-001	1	ADAPTER KIT
3	A-63585-000	REF	THREADED ROD EXTENSION
2	A-92382-003	1	90° ELBOW 1/4" NPT x 1/2" ID HOSE
1	A-16349-003	1	FUEL SYSTEM, HPS6
<b>ITEM</b>	<b>PART NO</b>	<b>QUAN.</b>	<b>DESCRIPTION</b>

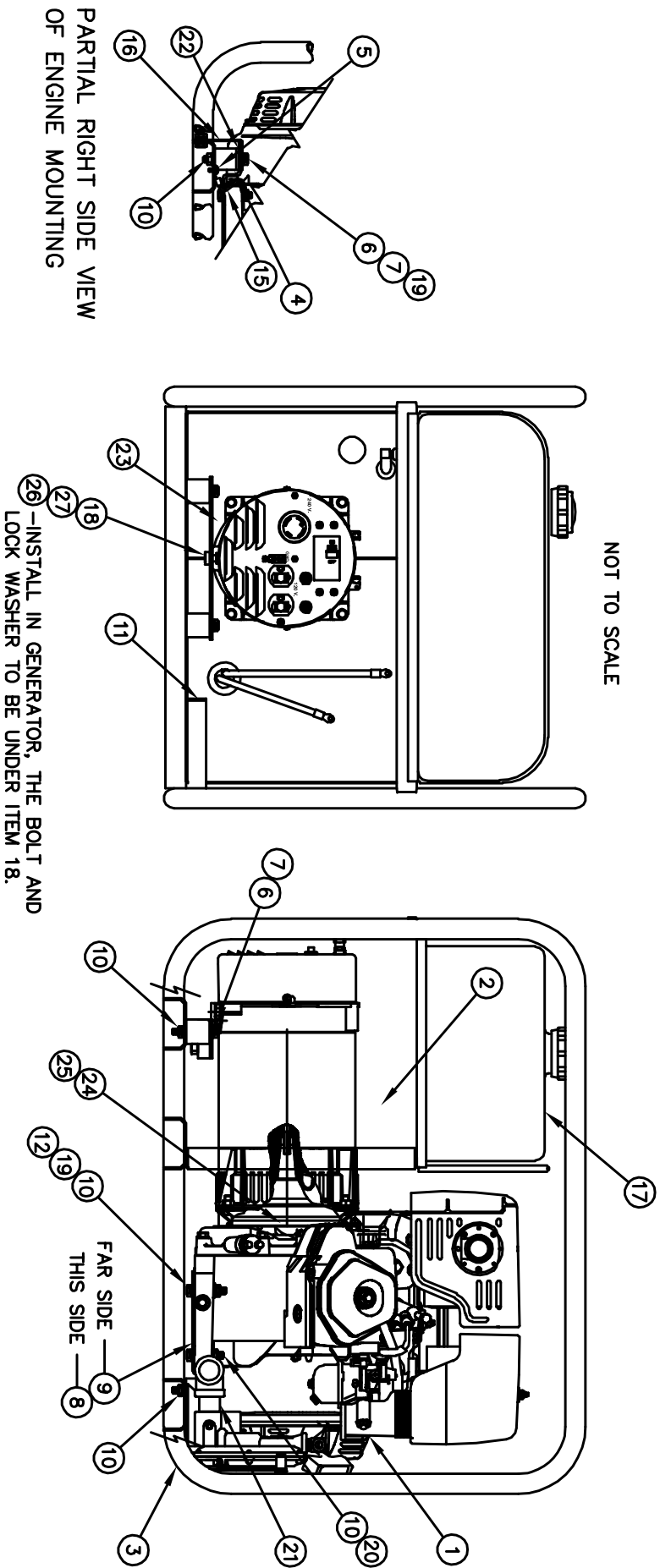
# END COVER ASSEMBLY CSA HPS6000HE/F



23	419-000	1	#10-24 x 1/2 ROUND HEAD SCREW
22	24198-001	1	BHMS #8-32 X 5/8
21	4156-000	2	TERMINAL LUG
20	91778-000	6.459FT	LEAD WIRE, # 12 GA. BLK
19	51320-000	1	TERMINAL CONNECTOR, CAP
18	16346-011	4	TERMINAL LUG
17	16346-010	1	HOUSING, CONNECTOR
16	21698-001	4	TORX SHEET METAL SCREW, #10 X 3/8
15	21850-011	14	TERMINAL LUG
14	48602-008	4	TERMINAL LUG
13	51319-000	1	LUG
ITEM	PART NO.	QTY	DESCRIPTION
12	456-000	1	HN #10-24
11	21975-000	3	LW, #10 EXTERNAL TOOTH
10	48042-001	1	GROUND LUG
9	6402-001	2	BHMS #8-32 X 3/8
8	5113-000	3	HN #8-32
7	21976-000	3	LW, #8 EXTERNAL TOOTH
6	64045-032	2	MOUNTING STRAP
5	16346-013	1	END COVER
4	97360-000	1	RECEPTICLE
3	91286-001	2	BREAKER
2	50766-000	2	DUPLEX, RECEPTICLE
1	57030-009	1	BREAKER
ITEM	PART NO.	QTY	DESCRIPTION

# GENERATOR ASSEMBLY CSA HPS6000HE/G

NOT TO SCALE



# GENERATOR ASSEMBLY

## CSA HPS6000HE/G

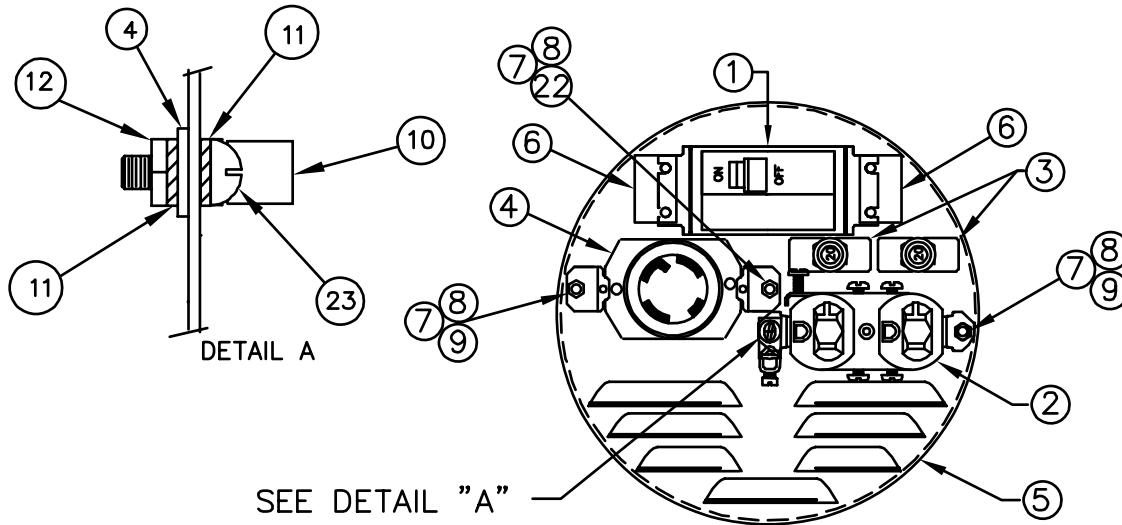
\* SEE DWG 15062-003 FOR REFERENCE.

36			
* 35	A-99671-000	1	#10-24 WHIZ NUT
34			
33			
* 32	A-95568-000	1	#10-24 X 5/8 THREADED STUD
* 31	A-16249-000	2	5/16-18 FLANGE NUT
* 30	A-477-000	2	5/16-18 X 5/8 HHCS
* 29	A-81018-008	2	CLAMP
28			
27	A-464-000	1	3/8-16 X 3/4 HHCS
26	A-16250-000	1	3/8-16 FLANGE NUT
25	481-000	4	SLW 3/8
24	A-91658-001	4	HHCS 3/8-16 x 1
23	B-15617-003	1	END COVER ASSEMBLY
22	A-23760-002	2	1.25 O.D. X .344 I.D. FLAT WASHER
21	B-15062-005	1	GAS KIT & INSTALLATION
20	468-000	2	5/16-18 X 1-1/2 HEX HD BOLT
19	A-526-000	2	FLAT WASHER
18	A-16335-007	1	SUPPORT, GENERATOR
17	B-15163-041	1	FUEL SYSTEM INSTALLATION
16	B-16161-008	1	SHIPPING RESTRAINT INSTALLATION
15	B-9769-145	1	LEAD WIRE ASSEMBLY
14	A-64668-062	1	LITERATURE PACKAGE & SHIPPING CONTAINER
13	B-15715-061	1	DECAL & NAMEPLATE INSTALLATION
12	9416-000	2	5/16-18 X 1.75 HEX HD BOLT
11	B-16175-002	1	BATTERY TRAY & CABLES INSTALLATION
10	16249-000	8	5/16 LOCKNUT
9	A-15929-002	1	SHOCKMOUNT ADAPTER BRACKET
8	A-15929-001	1	SHOCKMOUNT ADAPTER BRACKET
7	480-000	4	5/16 SPLIT LOCKWASHER
6	467-000	4	5/16-18 X 3/4 HEX HD BOLT
5	A-21698-001	1	#10 X 3/8 TYPE Z SELF TAPPING SCREW
4	A-64062-000	4	SHOCK MOUNTS
3	B-63073-011	1	WELDED CRADLE ASSEMBLY
2	A-16346-006	1	ORDERING SPEC., GENERATOR
1	B-15428-000	1	GASOLINE ENGINE
ITEM	PART NO	QUAN.	DESCRIPTION

GENERATOR: MECC ALTE SPA  
 MODEL: S16W-130/A  
[www.meccalte.com](http://www.meccalte.com)

ENGINE: HONDA 9.5 H.P.  
 MODEL: GX340 RT1VWE2  
[www.honda-engines.com](http://www.honda-engines.com)

# END COVER ASSEMBLY CSA HPS6000HE/G



SEE DETAIL "A"

24	51319-000	1	TERMINAL SPLICE CAP, COPPER
23	419-000	1	#10-24 x 1/2 ROUND HEAD SCREW
22	24198-001	1	BHMS #8-32 X 5/8
21	4158-000	1	TERMINAL LUG
20	91815-000	2.667 FT	LEAD WIRE, # 14 GA. BLK
19	44791-000	1	TERMINAL CONNECTOR, CAP
18	16346-011	4	TERMINAL LUG
17	16346-010	1	HOUSING, CONNECTOR
16	21698-001	4	TORX SHEET METAL SCREW, #10 X 3/8
15	21850-002	9	TERMINAL LUG
14	61898-000	4	TERMINAL LUG
13	10468-000	3.958 FT	LEAD WIRE, 16 GA, BLACK
ITEM	PART NO.	QTY	DESCRIPTION
12	456-000	1	HN #10-24
11	21975-000	2	LW, #10 EXTERNAL TOOTH
10	48042-001	1	GROUND LUG
9	6402-001	2	BHMS #8-32 X 3/8
8	5113-000	3	HN #8-32
7	21976-000	3	LW, #8 EXTERNAL TOOTH
6	64045-032	4	MOUNTING STRAP
5	16346-014	1	END COVER
4	97360-000	1	RECEPTICLE
3	91286-001	2	BREAKER
2	50766-000	1	DUPLEX, RECEPTICLE
1	57030-009	1	BREAKER
ITEM	PART NO.	QTY	DESCRIPTION

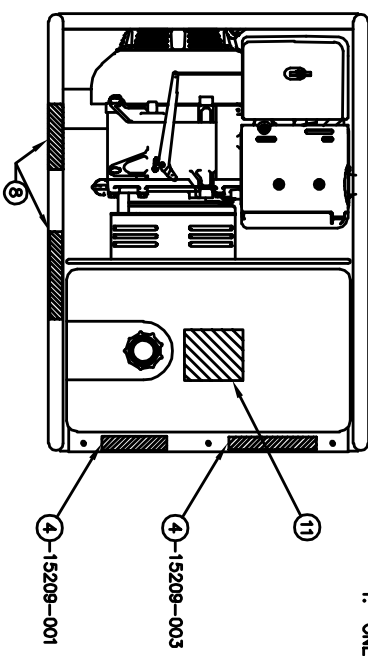
# DECAL INSTALLATION

## CSA HPS6000HE/F

## CSA HPS6000HE/G

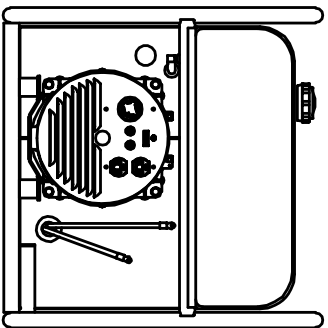
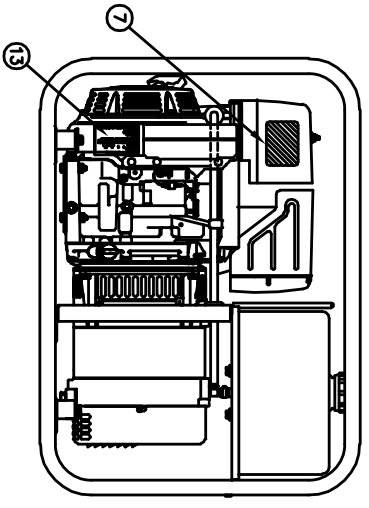
NOTES:  
1. ONE ITEM 10 DECAL GOES ON SHIPPING BOX.

ITEM	PART NO	QUAN.	DESCRIPTION
13	A-99877-002	1	AIR QUALITY LEVEL, EMISSIONS
12	A-99877-003	1	EMISSION LABEL
11	A-64918-000	2	DECAL, DANGER CARB MONOX
10	B-15210-008	1	FUEL CONSUMPTION TAG
9	A-56813-000	1	APPROVAL PLATE
8	B-15209-100	1	DANGER DECAL SET(CSA)
7	A-91718-000	1	RFT DECAL
6	A-80710-085	1	HANG TAG
5	A-63941-001	1	HOT WARNING DECAL
4	B-15209-000	1	DANGER DECAL SET
3	A-63966-004	1	NAMEPLATE
2	A-15370-008	1	MODEL DECAL
1	A-84214-045	1	HOME POWER DECAL

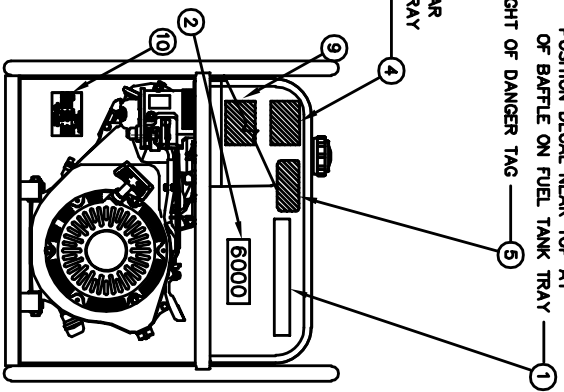
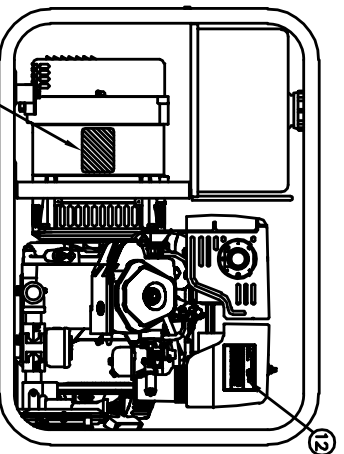


11  
4-15209-003  
4-15209-001

PLACE HOT WARNING DECAL APPROX 1.00" TO THE RIGHT OF DANGER TAG — 5  
POSITION DECAL NEAR TOP AT OF BAFFLE ON FUEL TANK TRAY — 1

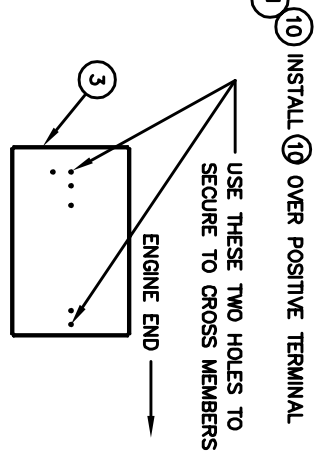
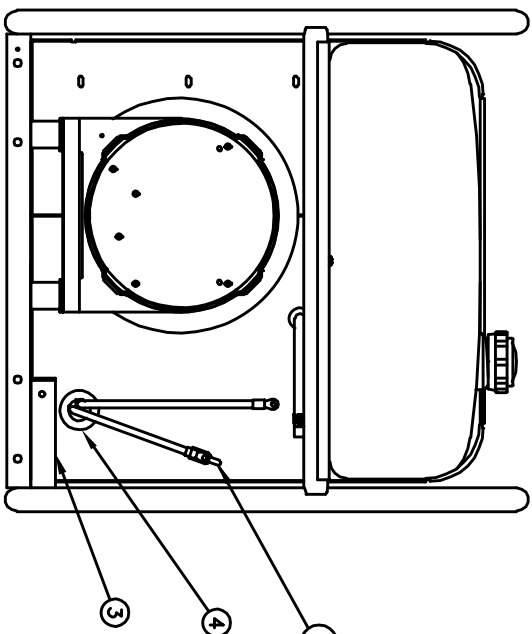
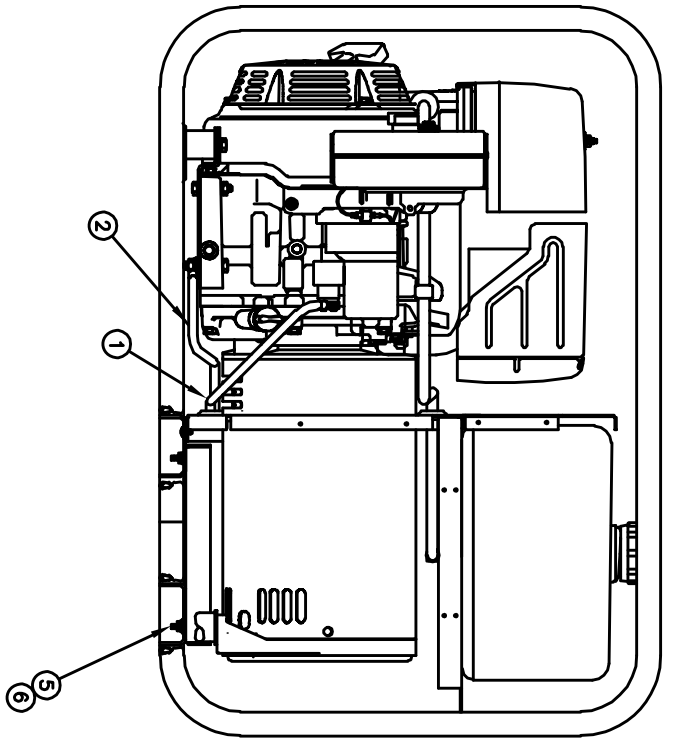


PLACE ONE NAMEPLATE AS SHOWN, ATTACH — 3  
OTHER TO THE OUTSIDE OF THE SHIPPING CONTAINER



# BATTERY TRAY & CABLES INSTALLATION

## CSA HPS6000HE/F CSA HPS6000HE/G



# BATTERY TRAY & CABLES INSTALLATION

## CSA HPS6000HE/F CSA HPS6000HE/G

10	A-16234-000	1	CAPLUG
9	A-15807-000	1	BATTERY HOLD DOWN KIT
8			
7			
6	A-99671-000	2	#10-24 FLANGELOCK
5	A-95568-000	2	#10-24 X .625 THREADED STUD
4	A-62486-000	1	GROMMET
3	A-15676-001	1	BATTERY TRAY
2	A-15767-007	1	NEGATIVE BATTERY CABLE
1	A-15767-006	1	POSITIVE BATTERY CABLE
ITEM	PART NO	QUAN.	DESCRIPTION

### MAINTENANCE ITEMS:

**AIR CLEANER ELEMENT:** HONDA #: 17210-ZE3-010

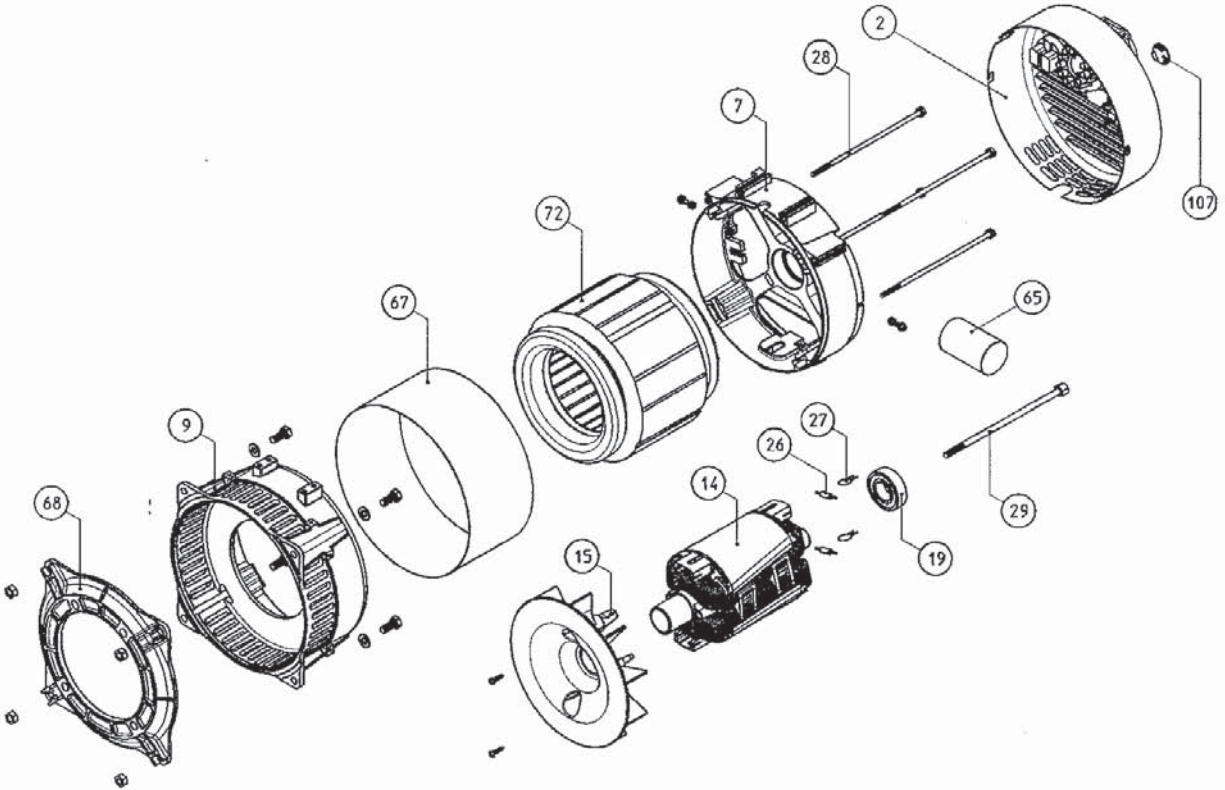
**OUTER FILTER:** HONDA #: 17218-ZE3-000

**SPARK PLUG:** DENSO #: W16EPR-U

***WINCO INC***<sup>®</sup>  
A Division of **DT** Dyna Technology Inc

225 S. CORDOVA AVE.  
LECENTER, MN 56057  
507-357-6821  
SERVICE DEPT.  
507-357-6831

# GENERATOR END ASSEMBLY CSA HPS6000HE/F



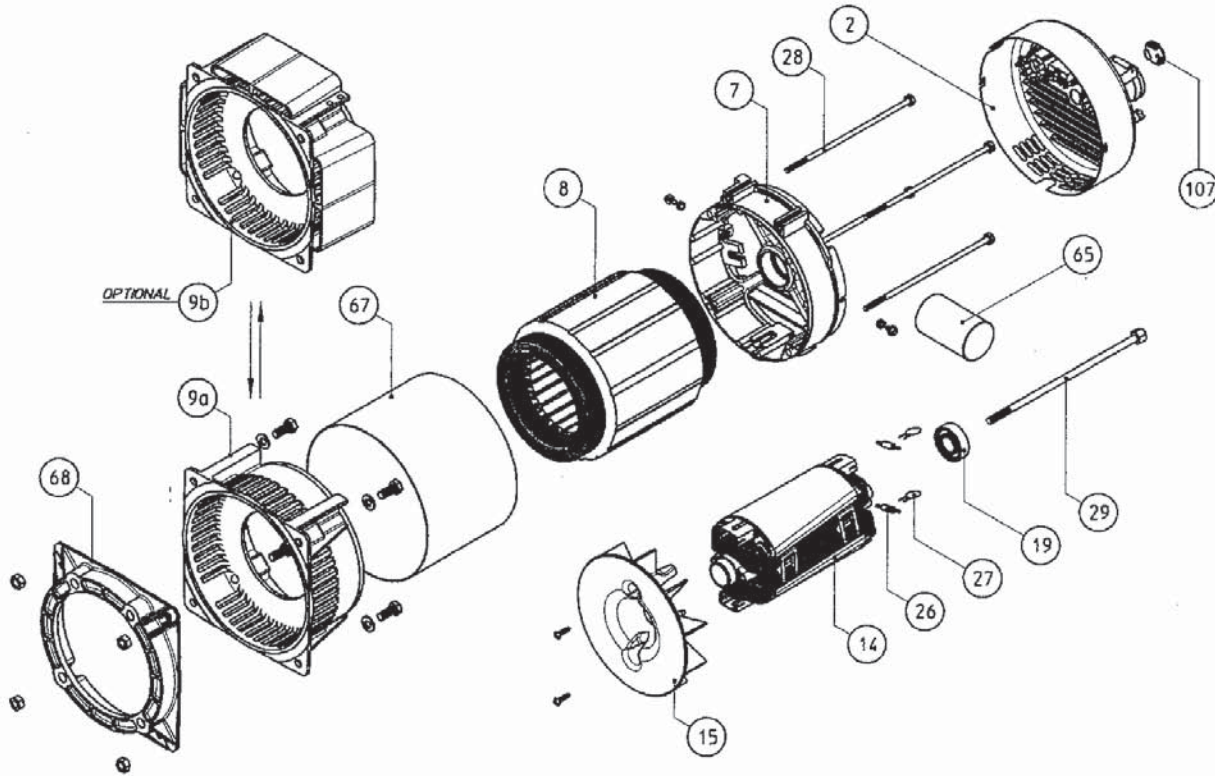
REF #	PART NUMBER	QTY	DESCRIPTION
26	16346-105	2	Diode
27	16346-106	2	Varistor
65	16346-312	1	Capacitor

WINCO INC. SELLS THESE THREE INDIVIDUAL PARTS, OTHERWISE WINCO INC. SELLS THE COMPLETE GENERATOR END. IF INDIVIDUAL PARTS ARE REQUIRED THEY CAN BE OBTAINED THROUGH: MAGIL CORP. (847) 550-0530 sales@magilcorp.com.

### RESISTANCE VALUES:

**STATOR:** 0.280 Ohms  
**ROTOR:** 4.80 Ohms  
**EXCITATION:** 0.76 Ohms

# GENERATOR END ASSEMBLY CSA HPS6000HE/G



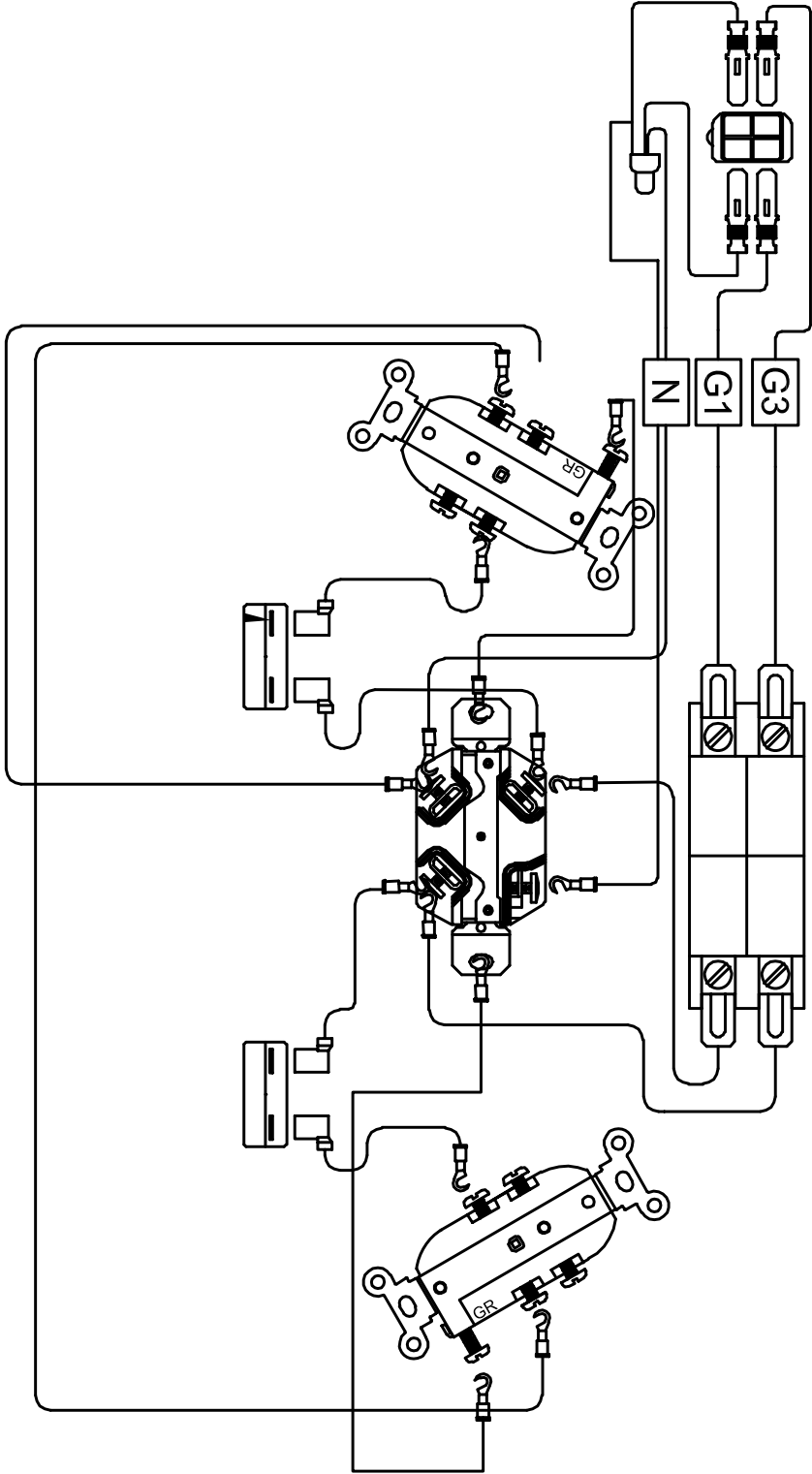
REF #	PART NUMBER	QTY	DESCRIPTION
26	16346-105	2	Diode
27	16346-106	2	Varistor
65	16346-612	1	Capacitor

WINCO INC. SELLS THESE THREE INDIVIDUAL PARTS, OTHERWISE WINCO INC. SELLS THE COMPLETE GENERATOR END. IF INDIVIDUAL PARTS ARE REQUIRED THEY CAN BE OBTAINED THROUGH: MAGIL CORP. (847) 550-0530 sales@magilcorp.com.

## RESISTANCE VALUES:

**STATOR:** 0.360 Ohms  
**ROTOR:** 3.95 Ohms  
**EXCITATION:** 2.446 Ohms

# WIRING DIAGRAM CSA HPS6000HE/F



# WIRING DIAGRAM CSA HPS6000HE/G

