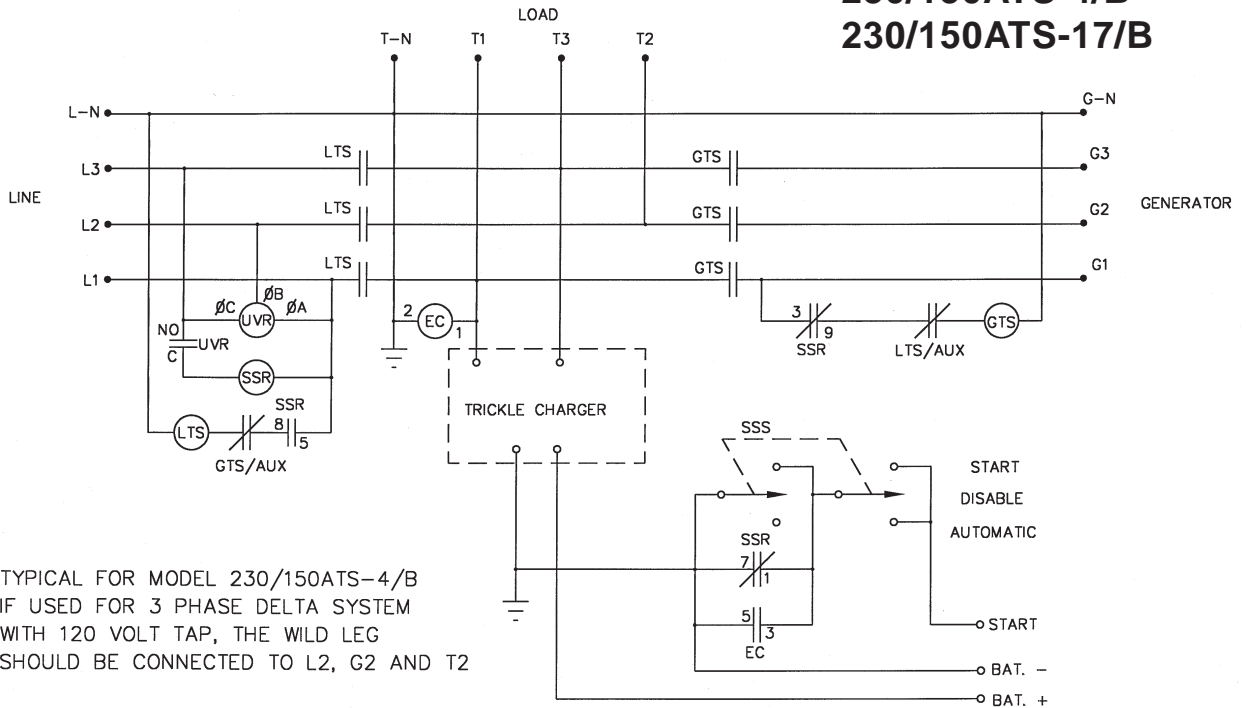
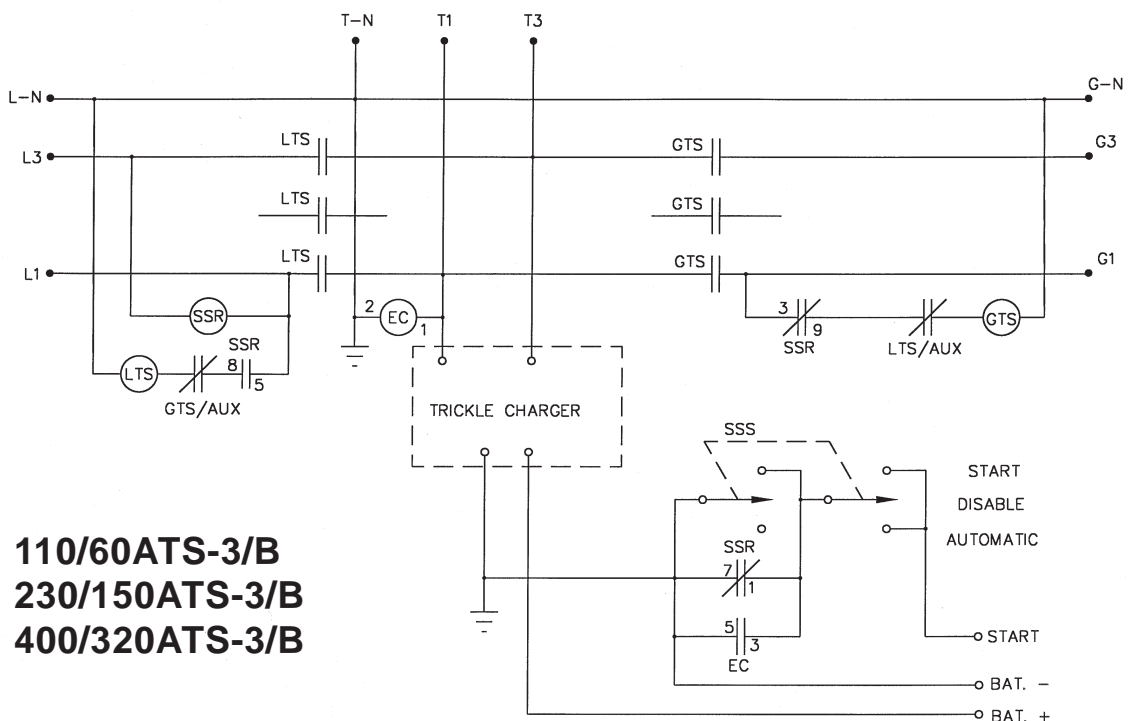


PARTS LISTS & WIRING DIAGRAMS

230/150ATS-4/B
230/150ATS-17/B



110/60ATS-3/B
230/150ATS-3/B
400/320ATS-3/B

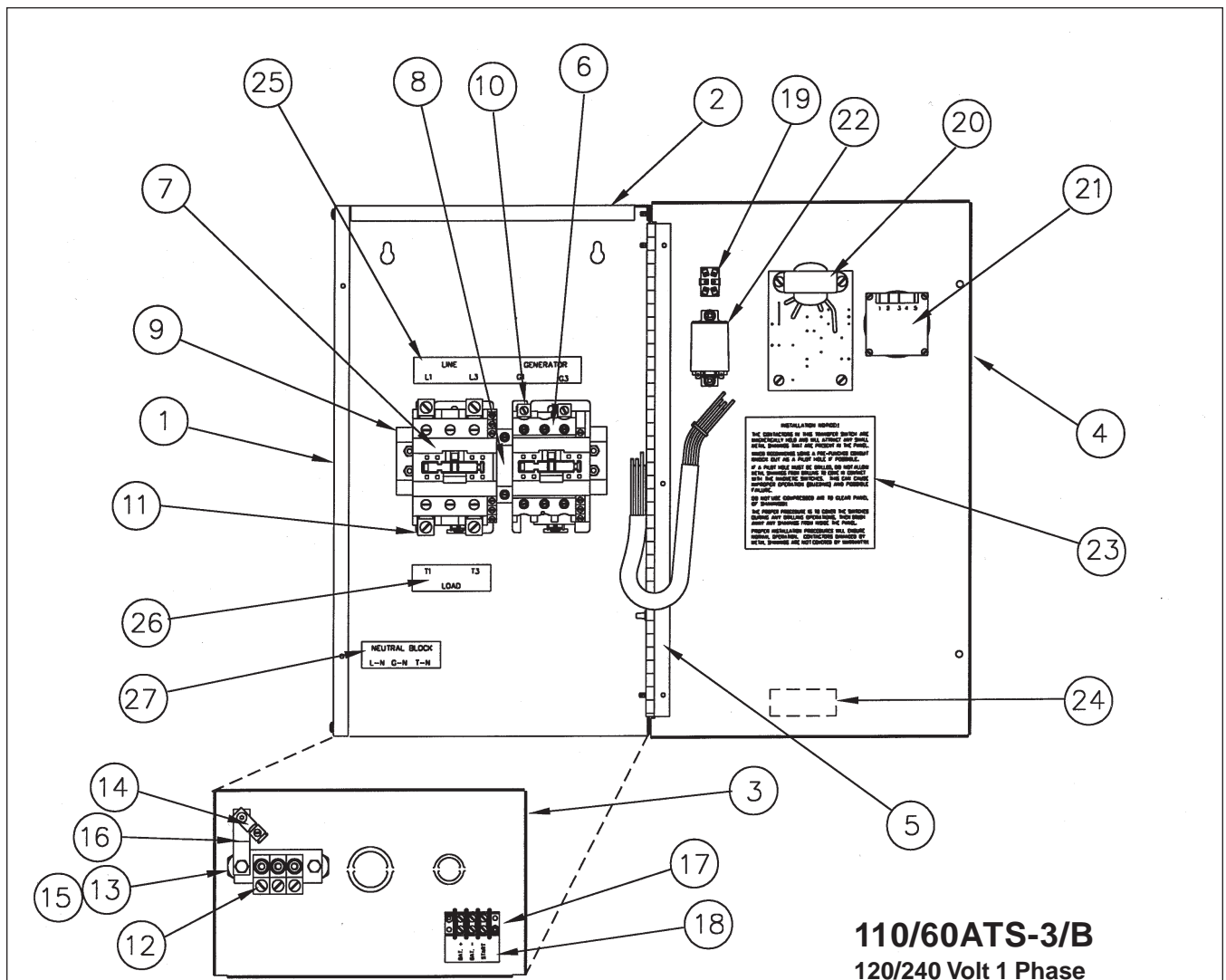


AUTOMATIC TRANSFER SWITCH CROSS REFERENCE

MODEL NUMBER	ILLUSTRATION	PARTS LIST	WIRING DIAGRAM
110/60ATS-3/B	PAGE 3	PAGE 3	PAGE 1
230/150ATS-3/B	PAGE 4	PAGE 5	PAGE 1
230/150ATS-4/B	PAGE 4	PAGE 5	PAGE 1
230/150ATS-17/B	PAGE 4	PAGE 5	PAGE 1
400/320ATS-3/B	PAGE 4	PAGE 5	PAGE 1
ATS-3/A 100/50	PAGE 10	PAGE 10	PAGE 11
ATS-3/A 100/100	PAGE 8	PAGE 9	PAGE 11
ATS-4/A 100/100	PAGE 8	PAGE 9	PAGE 11
ATS-17/A 100/100	PAGE 8	PAGE 9	PAGE 11
ATS-18/A 100/100	PAGE 8	PAGE 9	PAGE 12
ATS-3/A 225/100	PAGE 8	PAGE 9	PAGE 11
ATS-4/A 225/100	PAGE 8	PAGE 9	PAGE 11
ATS-17/A 225/100	PAGE 8	PAGE 9	PAGE 11
ATS-3/A 225/225	PAGE 6	PAGE 7	PAGE 11
ATS-4/A 225/225	PAGE 6	PAGE 7	PAGE 11
ATS-17/A 225/225	PAGE 6	PAGE 7	PAGE 11
ATS-18/A 225/225	PAGE 6	PAGE 7	PAGE 12
ATS-3/A 400/300	PAGE 6	PAGE 7	PAGE 11
ATS-4/A 400/300	PAGE 6	PAGE 7	PAGE 11
ATS-17/A 400/300	PAGE 6	PAGE 7	PAGE 11

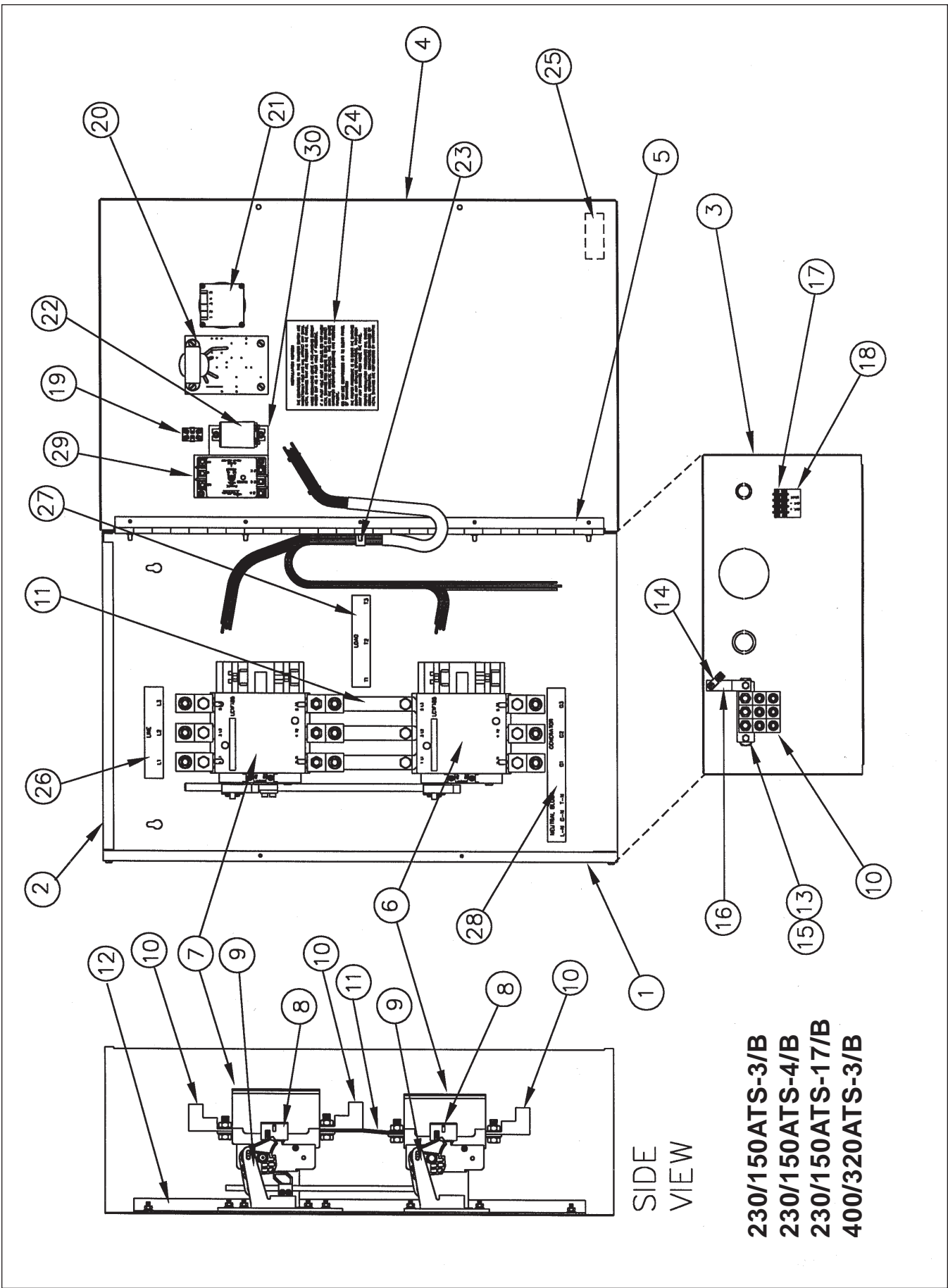
CONTACTOR PARTS

Allen Bradley	Size	Coil Part Number	Contacts Part Number
	50 AMP	64586-400	64586-401
	100 AMP	64585-400	64585-401
	225 AMP	64585-410	64585-411
	300 AMP	64585-430	64585-421
	400 AMP	64585-430	64585-431
Telemecanique			
	60 AMP	80899-101	Not Available
	110 AMP	80899-101	Not Available
	150 AMP	80899-102	80899-103
	230 AMP	80899-102	80899-104
	300 AMP	80899-105	80899-106
	400 AMP	80899-105	80899-107



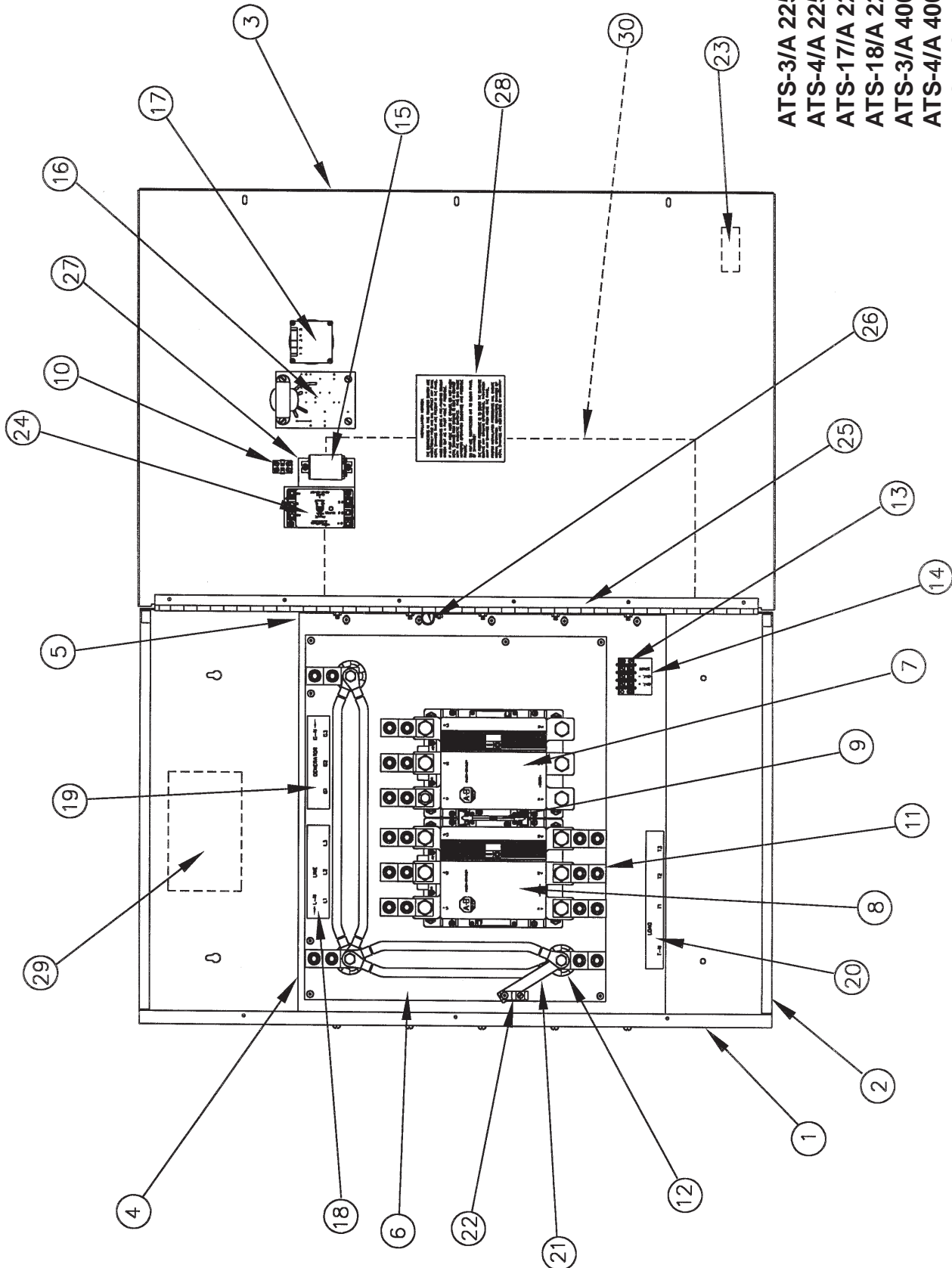
110/60ATS-3/B
120/240 Volt 1 Phase

REF	PART NBR	QTY	DESCRIPTION	REF	PART NBR	QTY	DESCRIPTION
	64590-023		Complete Unit	14	48042-000	1	Ground Lug
1	64801-400	1	Cabinet Rear & Sides	15	94378-000	2	Stand-Off Insulator
2	64589-400	1	Cabinet Top Panel	16	52789-003	1	Copper Strap
3	64589-404	1	Cabinet Bottom Panel	17	64598-000	1	Terminal Block
4	64591-404	1	Cabinet Door	18	64599-000	1	Decal, Terminal Block
5	64597-004	1	Hinge	19	71216-001	1	DPDT Toggle Switch
6	64585-005	1	60 AMP Contactor	20	61222-000	1	Battery Charger
7	64585-006	1	110 AMP Contactor	21	64600-001	1	Exerciser Clock
8	64587-001	1	Mech. & Elec. Interlock	22	59944-014	1	3PDT Relay
9	64802-001	1	74MM Mounting Rail	23	64797-000	1	Decal, ATS Insallation Notice
10	63708-001	2	Terminal Lugs, Gen. Side	24	64604-000	1	Decal, Warning
11	63708-002	4	Terminal Lugs, Line Side	25	64601-011	1	Decal, Line-Generator Terminals
12	63708-003	3	Terminal Lugs, Neutral	26	64601-012	1	Decal, Load Terminals
13	64789-003	2	Neutral Terminal Strip	27	64601-013	1	Decal, Neutral Lerminals

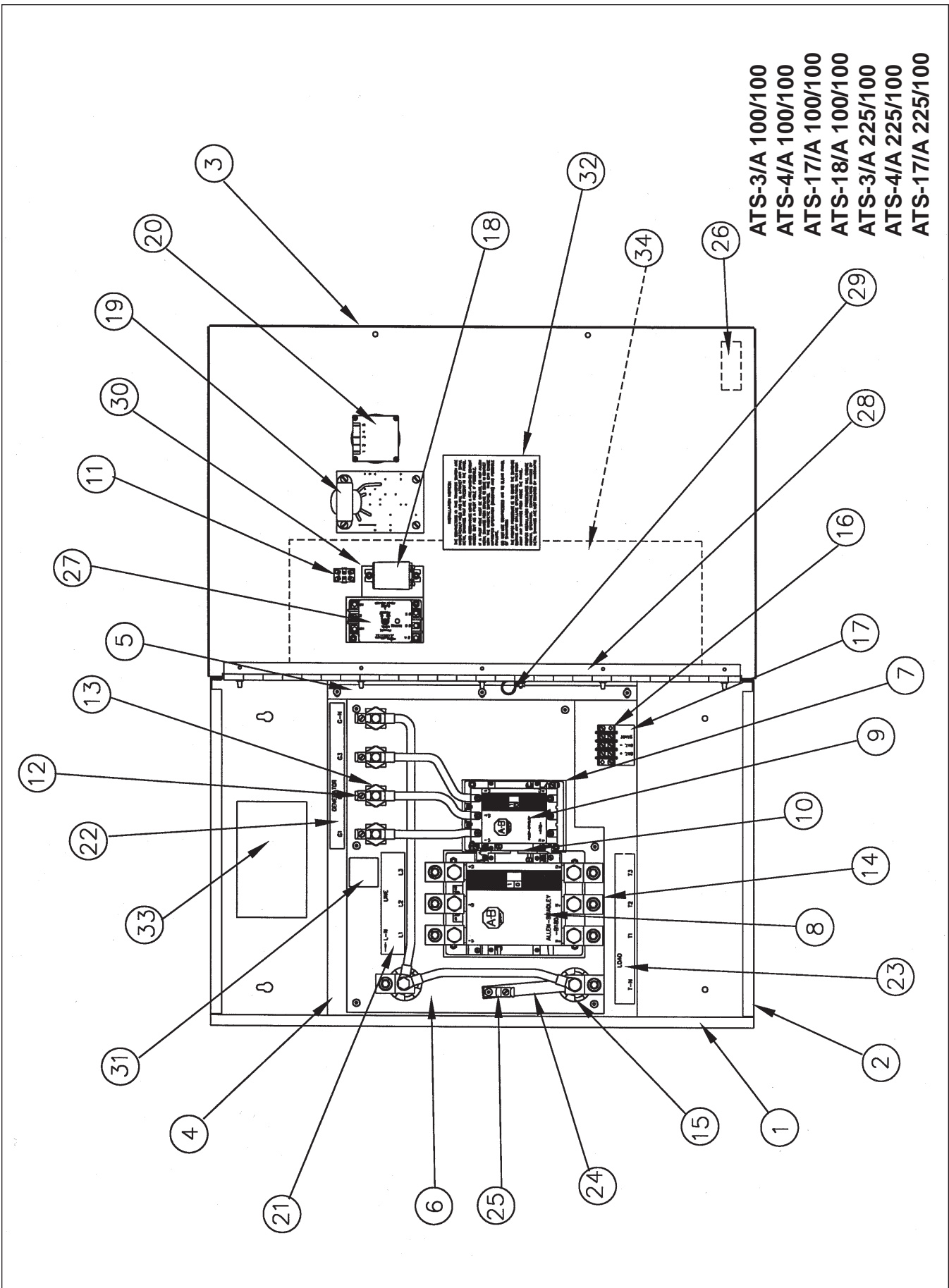


400/320ATS-3/B				230/150ATS-4/B & 17/B				230/150ATS-3/B			
240 Volt 1 Phase				208/240 Volt 3 Phase				240 Volt 1 Phase			
PART NBR	QTY	REF	DESCRIPTION	PART NBR	QTY	PART NBR	QTY	PART NBR	QTY	PART NBR	QTY
64590-019			Complete Unit	64590-015	1	64590-013	1				
64801-402	1	1	Cabinet Rear & Sides	64801-401	1	64801-401	1	64801-401	1		
64589-402	1	2	Cabinet Top Panel	64589-401	1	64589-401	1	64589-401	1		
64589-405	1	3	Cabinet Bottom Panel	64589-403	1	64589-403	1	64589-403	1		
64591-403	1	4	Cabinet Door	64591-405	1	64591-405	1	64591-405	1		
64597-002	1	5	Hinge	64597-001	1	64597-001	1	64597-001	1		
64589-009	1	6	Generator Side Contactor	64585-007	1	64585-007	1	64585-007	1		
64589-010	1	7	Line Side Contactor	64585-008	1	64585-008	1	64585-008	1		
64587-006	2	8	Normally Closed Auxiliary Switch	64587-006	2	64587-006	2	64587-006	2		
64587-003	1	9	Mechanical Interlock Kit	64587-002	1	64587-002	1	64587-002	1		
64700-000	9	10	Terminal Lugs	58060-000	12	58060-000	12	58060-000	9		
64798-000	6	11	Copper Jumper Straps	94798-004	4	94798-004	4	94798-004	4		
64592-009	1	12	Cabinet Stiffener Channel	N/A		N/A		N/A			
64798-001	2	13	Neutral Terminal Strip	64798-001	2	64798-001	2	64798-001	2		
48042-000	1	14	Ground Lug	48042-000	1	48042-000	1	48042-000	1		
94378-000	2	15	Stand-Off Insulator	94378-000	2	94378-000	2	94378-000	2		
52789-003	2	16	Copper Strap	52789-003	2	52789-003	2	52789-003	2		
64598-000	1	17	Terminal Block	64598-000	1	64598-000	1	64598-000	1		
64599-000	1	18	Decal, Terminal Block	64599-000	1	64599-000	1	64599-000	1		
71216-001	1	19	DPDT Toggle Switch	71216-001	1	71216-001	1	71216-001	1		
61222-000	1	20	Battery Charger	61222-000	1	61222-000	1	61222-000	1		
64600-001	1	21	Exerciser Clock	64600-001	1	64600-001	1	64600-001	1		
59944-014	1	22	3PDT Relay	59944-014	1	59944-014	1	59944-014	1		
48039-010	1	23	Cable Clamp	48039-010	1	48039-010	1	48039-010	1		
64797-000	1	24	Decal, ATS Installation Notice	64797-000	1	64797-000	1	64797-000	1		
64604-000	1	25	Decal, Warning	64604-000	1	64604-000	1	64604-000	1		
64601-017	1	26	Decal, Line Terminals	64601-014	1	64601-014	1	64601-017	1		
64601-018	1	27	Decal, Load Terminals	64601-015	1	64601-015	1	64601-018	1		
64601-019	1	28	Decal, Neutral-Generator Terminals	64601-016	1	64601-016	1	64601-019	1		
N/A		29	Under Voltage Relay	81257-004	1	N/A		N/A			
N/A		30	Under Voltage Relay, Mfg. Brkt.	63764-003	1	N/A		N/A			

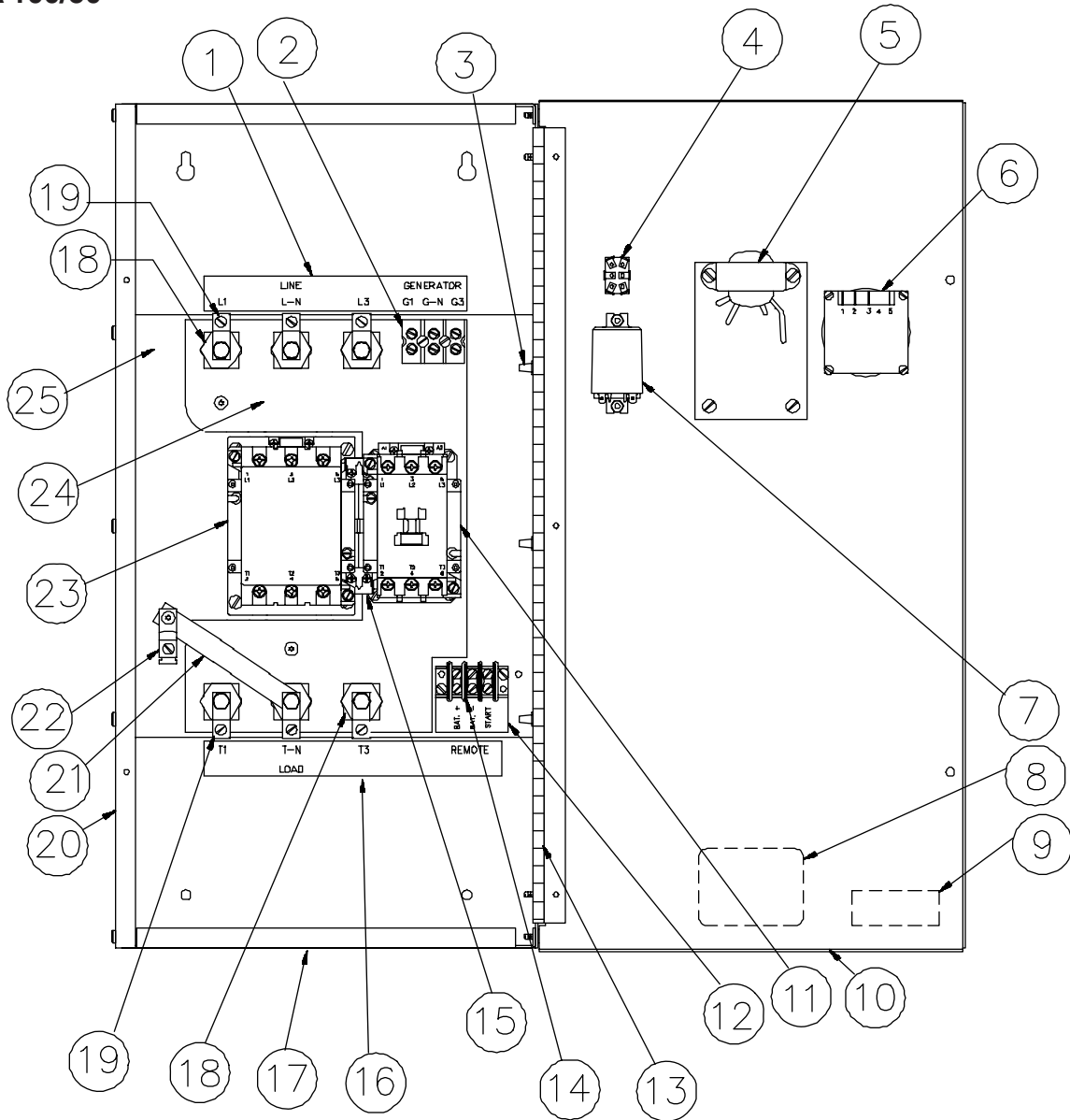
ATS-3/A 225/225
 ATS-4/A 225/225
 ATS-17/A 225/225
 ATS-18/A 225/225
 ATS-3/A 400/300
 ATS-4/A 400/300
 ATS-17/A 400/300



ATS-3/A 100/100
 ATS-4/A 100/100
 ATS-17/A 100/100
 ATS-18/A 100/100
 ATS-3/A 225/100
 ATS-4/A 225/100
 ATS-17/A 225/100

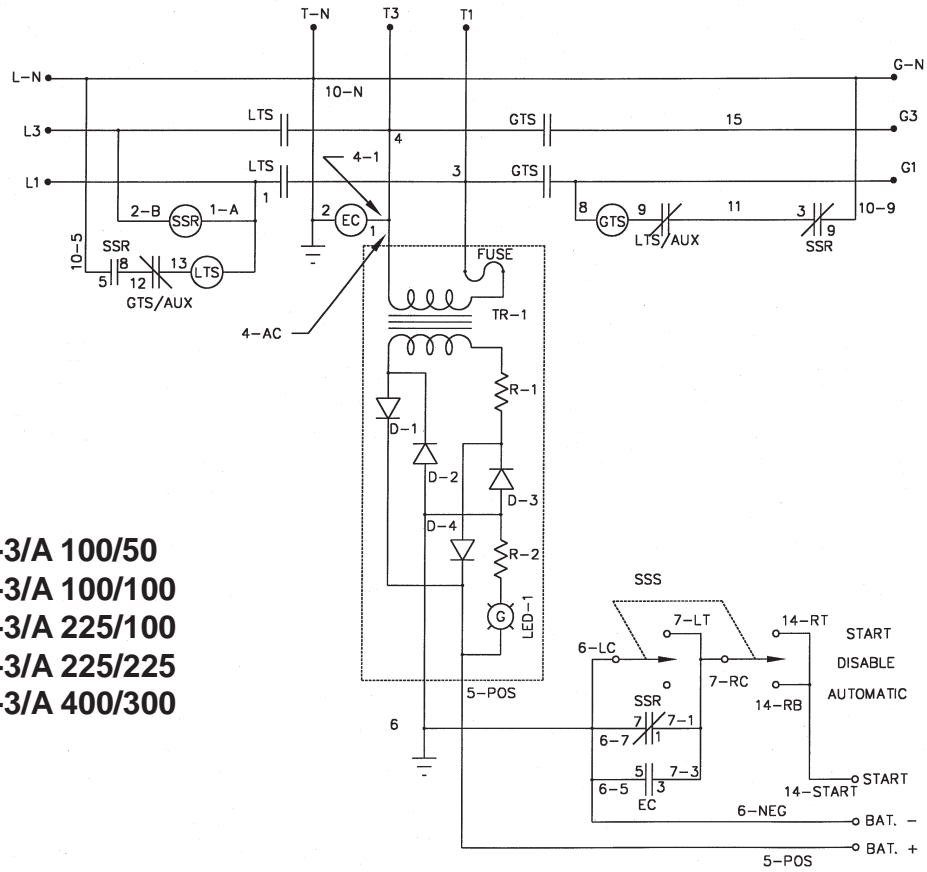


ATS-3/A 100/50

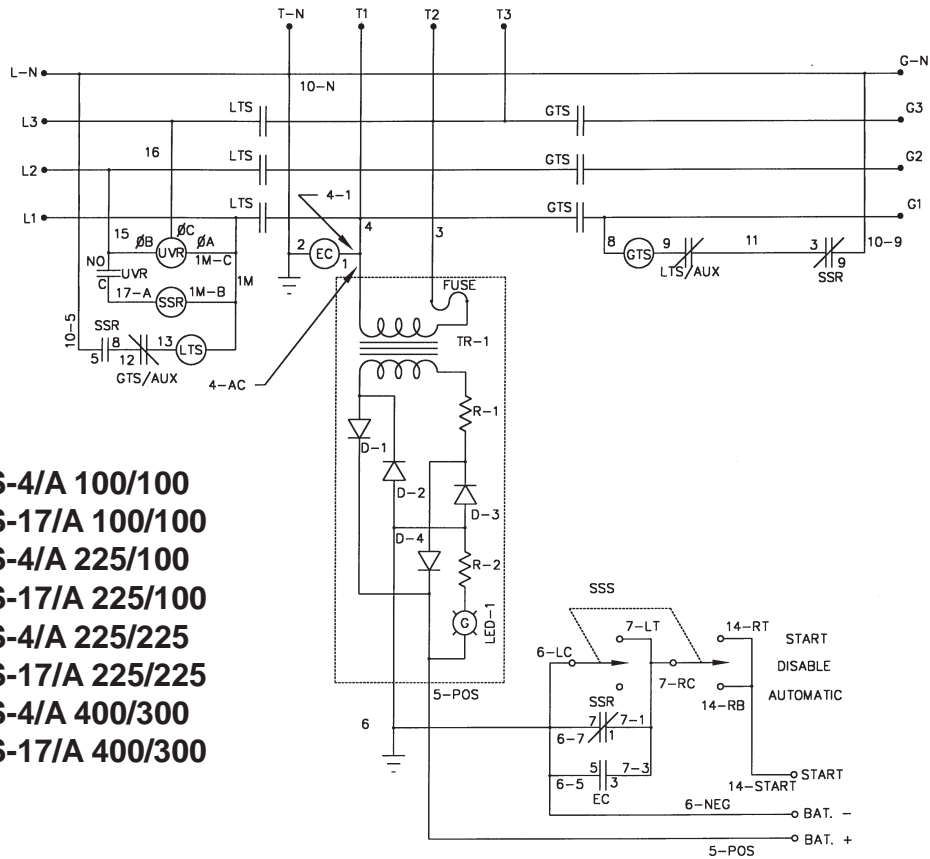


REF	PART #	QTY	DESCRIPTION	REF	PART #	QTY	DESCRIPTION
01	64601-000	1	Line Terminal Decal	14	64598-000	1	Terminal Block
02	51795-000	1	Terminal Block	15	64587-000	1	Mech. & Electrical Interlock
03	92267-001	6	Cap Plug	16	64602-000	1	Load Terminal Decal
04	71216-001	1	DPDT Toggle Switch	17	64589-000	2	Cabinet Top & Bottom Panels
05	61222-000	1	Tickle Charger	18	94378-000	6	Insulated Standoff
06	64600-000	1	Exerciser Clock	19	63708-000	6	Terminal Lug
07	59944-014	1	3PDT Relay	20	64588-000	1	Cabinet Rear & Side Panel
08	63966-000	2	Nameplate	21	52789-006	1	Copper Strap
09	64604-000	1	Warning Decal	22	48042-000	1	Ground Lug
10	64591-000	1	Cabinet Door	23	64585-000	1	Line Side Contactor
11	64586-000	1	Generator Side Contactor	24	64596-000	1	Contactor Space
12	64599-000	1	Terminal Block Decal	25	64592-000	1	Contactor Mounting Bracket
13	64597-000	1	Hinge				

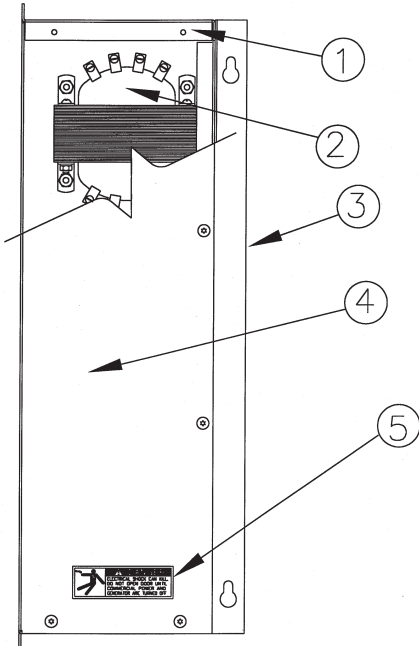
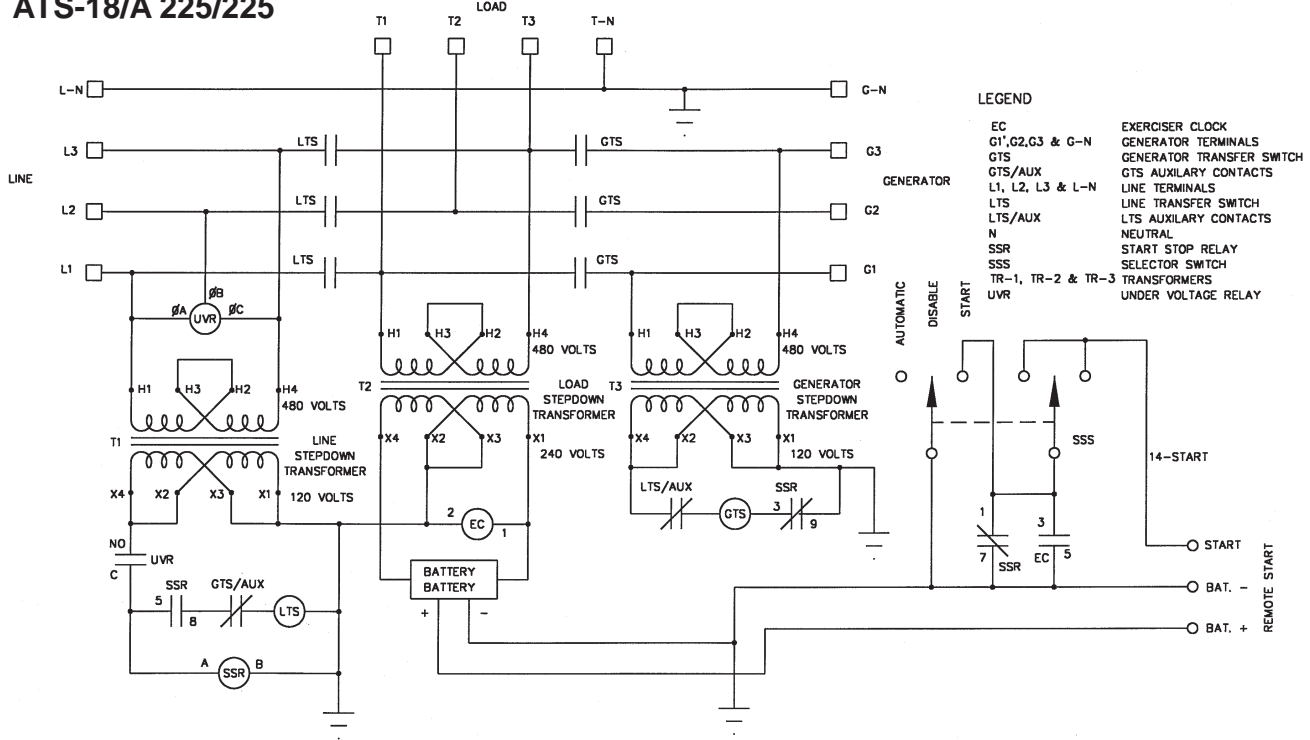
ATS-3/A 100/50
ATS-3/A 100/100
ATS-3/A 225/100
ATS-3/A 225/225
ATS-3/A 400/300



ATS-4/A 100/100
ATS-17/A 100/100
ATS-4/A 225/100
ATS-17/A 225/100
ATS-4/A 225/225
ATS-17/A 225/225
ATS-4/A 400/300
ATS-17/A 400/300



ATS-18/A 100/100
ATS-18/A 225/225



**480 VOLT STEPDOWN
 TRANSFORMER ASSEMBLY**

REF	PART NBR	QTY	DESCRIPTION
1	59715-001	1	Cabinet, Back, Top & Bottom
2	59719-000	1	Stepdown Transformer
3	59715-002	1	Cabinet, Side Panel
4	59715-003	1	Cabinet, Cover Panel
5	64604-000	1	Warning Decal

WINGO INC
 A Division of **DT** Dyna Technology Inc
 225 South Cordova Ave
 Le Center MN 56057
 507-357-6831