

40PTOC-4/B, 45PTOC-17/B, 40FPTOC-4/B, 45FPTOC-17/B
 40PTOC-4/C, 45PTOC-17/C, 40FPTOC-4/C, 45FPTOC-17/C
 32PTOC-520/B, 32PTOC-517/B, 32FPTOC-520/B, 32FPTOC-517/B

SEQ	REF #	DESCRIPTION	PART #	QTY	SEQ
1	001	LOCKWASHER 5/16	480-000	3	1
2	002	CAPSCREW 5/16-18 X 2	441-000	3	2
3	003	SCREW 8-32 X 5/16	40746-000	8	3
4					4
5	004	LOCKWASHER	6376-000	4	5
6	005	SCREW 8-32 X 1-1/2	10846-000	4	6
7	006	LOCKWASHER	90570-000	6	7
8					8
9	007	CAPSCREW	91256-000	6	9
10	008	SET SCREW	91347-000	1	10
11	009	NUT	447-000	1	11
12	010	EYE BOLT	91137-000	1	12
13					13
14	145	SPACER	91172-000	4	14
15	146	BRACKET	91170-000	1	15
16	147	SHIELD	91171-000	1	16
17					17
18	201	COVER	91175-001	1	18
19	203	LOUVERED PANEL	91174-000	1	19
20	205	BASE COVER	91246-000	1	20
21	212	REAR PANEL (BARE)	91371-000	1	21
22					22
23	222	MAGNETIC LATCH	91177-000	2	23
24	244	TRANSFORMER <u>45-91187-003</u>	<u>40-91187-001</u>	1	24
25	240	40KW PANEL ASSY - 208V	98379-001	1	25
26		45KW PANEL ASSY - 240V	98379-000	1	26
27					27
28	249A	*FRONT PANEL ONLY- 40 KW	98380-001	1	28
29	249B	*FRONT PANEL ONLY- 45 KW	98380-000	1	29
30	252	RECEPTACLE (OCTOPUS) 125A	91353-400	1	30
31					31
32	253	VOLTMETER 40KW/208V	91374-000	1	32
33		VOLTMETER 45KW/240V	91370-000	1	33
34	***	VM MAG SHIELD ****	91469-000	1	34
35					35
36	255	CIRCUIT BREAKER 50A 240V	57030-000	1	36
37	257	RECEPTACLE NEMA 6-50R	57325-000	1	37
38	258	CIRCUIT BREAKER 15A 120V	91286-000	1	38
39	259	RECEPTACLE NEMA 5-15R	24749-000	1	39
40					40
41					41
42	***	NOT ILLUSTRATED			42

40PTOC-4/B, 45PTOC-17/B, 40FPTOC-4/B, 45FPTOC-17/B
 40PTOC-4/C, 45PTOC-17/C, 40FPTOC-4/C, 45FPTOC-17/C
 32PTOC-520/B, 32PTOC-517/B, 32FPTOC-520/B, 32FPTOC-517/B

SEQ	REF #	DESCRIPTION	PART #	QTY	SEQ
43	263 *	*CIRCUIT BREAKER 100A 3P	82584-004	1	43
44	267	PLUG KIT (OCTOPUS)	91355-000	1	44
45					45
46	268	RETAINER PLATE	91350-000	1	46
47					47
48	512	COVER (IMPELLER)	91337-000	1	48
49	514	STATOR ASSY -40KW (-4)	91148-002	1	49
50		STATOR ASSY -45KW (-17)	91148-001	1	50
51		STATOR ASSY -32KW (-517)	91148-028	1	51
52		STATOR ASSY -32KW (-520)	91148-011	1	52
53					53
54	515	END BRACKET	91212-000	1	54
55	516	RETAINER	91211-001	1	55
56	517	SPACER	21264-000	3	56
57					57
58	530	ROTOR ASSEMBLY	91237-990	1	58
59	532	BEARING	91111-000	1	59
60	533	IMPELLER	91101-000	1	60
61					61
62	534	BEARING (DRIVE END)	91112-000	1	62
63	536	RETAINER	91196-000	1	63
64	570	EXCITATION ASSY	91251-000	1	64
65					65
66	571	RECTIFIER	91452-000	1	66
67	572	RING (BRUSH HOLDER)	91211-002	1	67
68	573	SPACER (FIBER)	23532-000	2	68
69					69
70	574	BRUSH (1/4 X 3/8)	23607-000	4	70
71	575	BRUSH HOLDER	59690-000	4	71
72	***	BARRIER SPACER ****	59688-000	4	72
73					73
74	* /B MODELS REQUIRE NEW PANEL (249) W/BREAKER CHANGE				74
75	*** NOT ILLUSTRATED				75
76					76
77					77
78	GEARBOX PARTS LISTING				78
79					79
80	REF.	DESCRIPTION	PART NO.	QTY	80
81					81
82	006	LOCKWASHER	90570-000	4	82
83	007	CAPSCREW	91256-000	4	83
84	011	STUD	91138-000	2	84

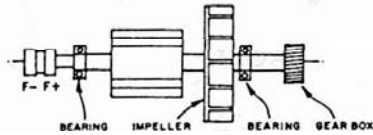
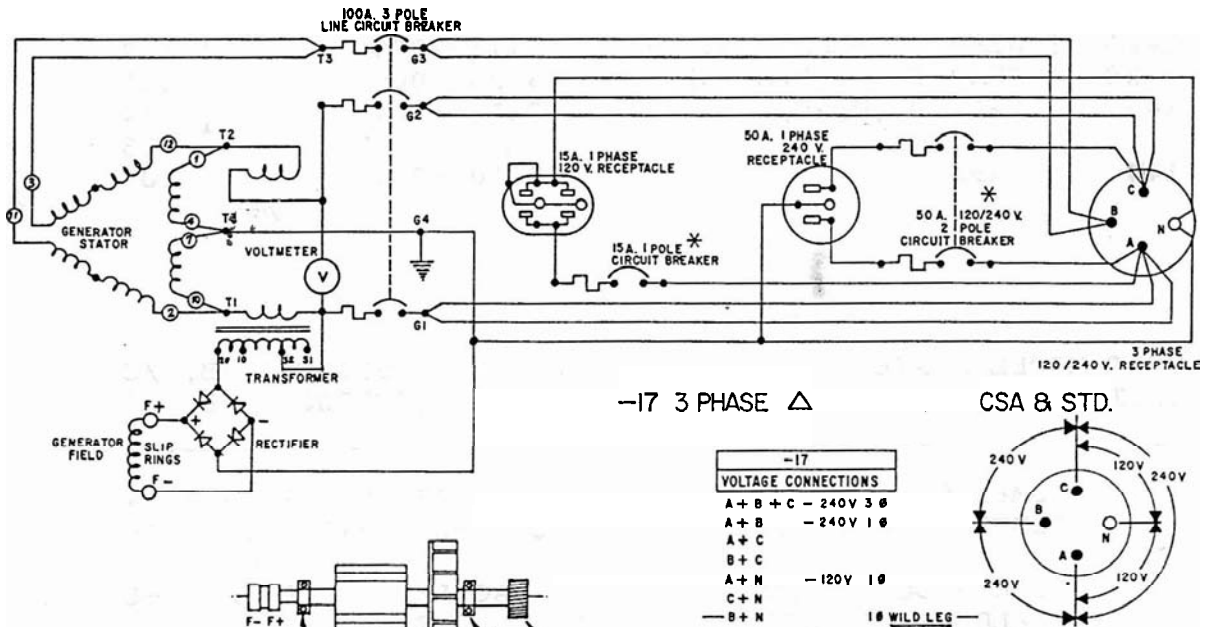
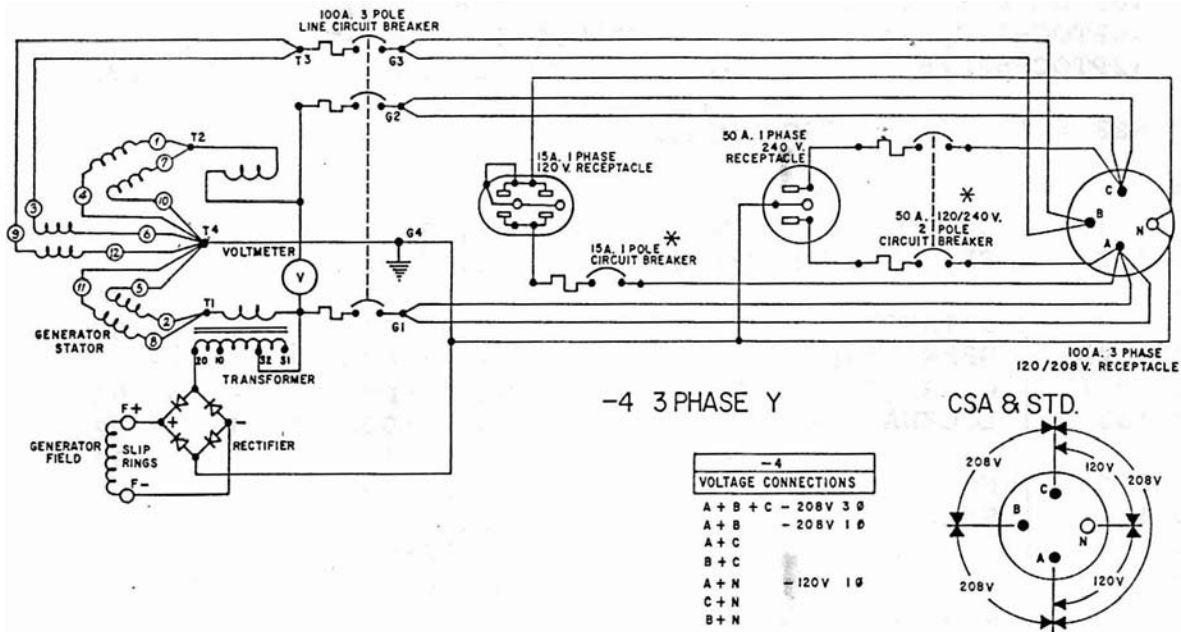
40PTOC-4/B, 45PTOC-17/B, 40FPTOC-4/B, 45FPTOC-17/B
 40PTOC-4/C, 45PTOC-17/C, 40FPTOC-4/C, 45FPTOC-17/C
 32PTOC-520/B, 32PTOC-517/B, 32FPTOC-520/B, 32FPTOC-517/B

SEQ	REF #	DESCRIPTION	PART #	QTY	SEQ
85					85
86	131	SUPPORT & COVER	91103-000	1	86
87	132	SEAL (ROTOR SHAFT)	91116-000	1	87
88					88
89	133	SLINGER	91345-000	1	89
90	134A	GEAR (540 RPM PINION)	91225-000	1	90
91	134B	GEAR (1000 RPM PINION)	91224-000	---	91
92	135	LOCKWASHER	50531-000	1	92
93					93
94	136	NUT	50532-000	1	94
95	137	SEAL (COVER)	91247-000	1	95
96	138	BEARING	91250-000	2	96
97			91108-001 1000 RPM		97
98	139	SPACER (FRONT)	91108-003	1	98
99	140	SHAFT	91344-000	1	99
100	141	KEY	91117-000	1	100
101					101
102	142A	GEAR (540 RPM INPUT)	91118-000	1	102
103	142B	GEAR (1000 RPM INPUT)	91248-000	---	103
104	143	SPACER (REAR)	91108-004	1	104
105			91108-002 1000 RPM		105
106	144	GASKET	91104-000	1	106

UNIT MODEL SERIES	40PTOC-4/B, /C	45PTOC-17/B, /C
UNIT MODEL SERIES	40FPTOC-4/B, /C	45FPTOC-17/B, /C

COMPLETE UNIT ASSY.	91276-20, -38	91268-16, -34
COMPLETE UNIT ASSY.	91276-22, -40	91268-18, -36

AC RESIDUAL VOLTS	7.0 VAC L-L	7.0 VAC L-L
FIELD RESISTANCE	3.51 OHMS	3.51 OHMS
SCHEMATIC DIAGRAM	B-91323	B-91323
WINDING SPEC. (SS#)	1307/1390	1299/1507
ARM. CONNECTION (AC#)	317 /323	316 /316



GENERAL SLIP RING IDENTIFICATION-ALL MODELS

(*) NOTE: EXTRA BREAKERS ON CSA MODELS ONLY