

Wiring Diagram C56617
 Schematic N/A
 Generator Parts
 Unassembled C56617
 Complete Unit
 Part # B56615

 REPAIR
 PARTS LIST
 #491

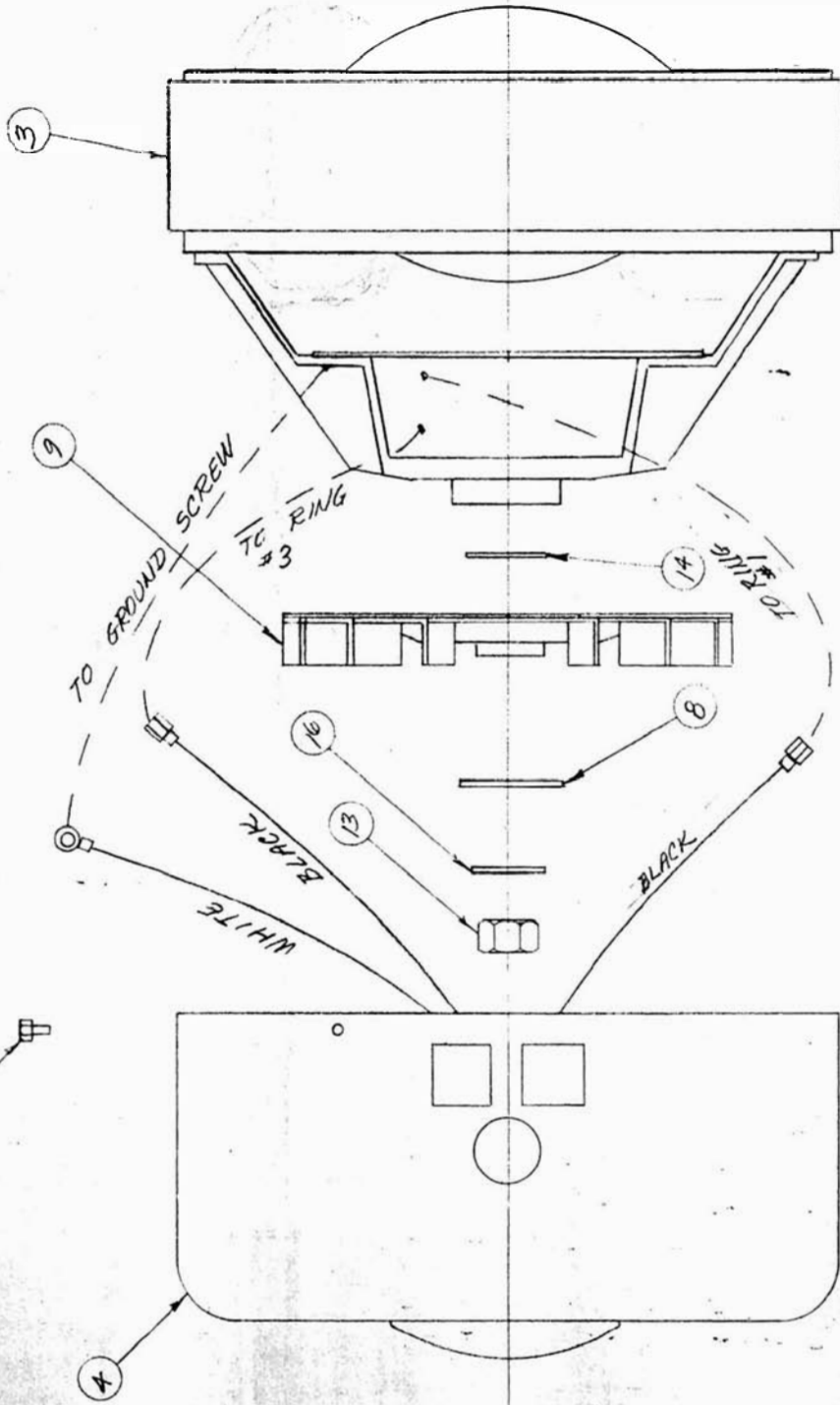
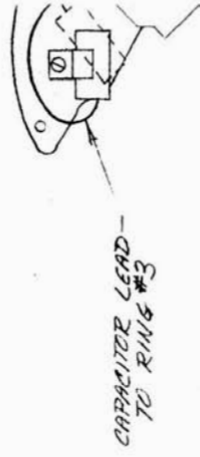
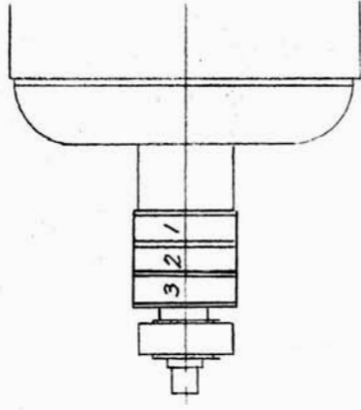
Size 5300 Watts
 Drive Two Bearing
 Type Two Pole
 Unit Model # 503KS2PC-3/B

<u>DESCRIPTION</u>	<u>PART #</u>	<u>QTY.</u>		<u>QTY</u>
Armature	56560-1	1	Has	
Armature Bearing			V. Meter	52490 1
Brush End	46911	1	Recept. 220V	55253 1
Armature Bearing			Recept. 110V	53636 2
Bracket End	8031	1		
Fan Assy.	23404	1		
Fan Washer	21867	1		
Fan Lockwasher	40552	1		
Fan Nut	9549	1		
Field Coil	55361	1		
Field Coil	55361-1	1		
Shell & Bracket Assy.	55417	1		
Pole Shoe	23207	2		
Pole Shoe Retainer	23208	2		
Engine Adaptor Bracket	40097	1		
Adaptor Bracket Screw	9416	4		
End Cover Assy.	55140	1		
End Cover Receptacle	53636	2		
End Cover Receptacle	55253	1		
Brush Rack Assy. (Complete)	55247	1		
A. C. Brush	23607	6		
A. C. Brush Holder	23500	6		
Brush Holder Plate	55107	1		
A. C. Condenser	41221	1		
Capacitor & Lead Assy.	54977	1		
Rectifier (Excitation)	54976 53976	1		
Base	24535	1		

-3/c

2

2



18			
17	40746	12	SCREW
16	20039	1	LOCKWASHER
15	480	4	10MM NUTS

