

Wiring Diagram N/A
 Schematic N/A
 Generator Parts
 Unassembled C55521
 Complete Unit
 Part # C55520

 REPAIR
 PARTS LIST
 #529

Size 4000 Watts
 Drive Two Bearing
 Type Four Pole

Unit Model # 4KS4PC-3/A

DESCRIPTION

PART #

QTY.

Armature	55522-1	1
Armature Bearing		
Brush End	46911	1
Armature Bearing		
Bracket End	8031	1
Fan Assy.	23404	1
Fan Washer	21867	1
Fan Lockwasher	40552	1
Fan Nut	9549	1
Field Coil	55261	1
Field Coil	55261-1	1
Field Coil	55261-2	1
Field Coil	55261-3	1
Shell & Bracket Assy.	55144	1
Pole Shoe	23550	4
Pole Shoe Retainer	23552	4
Engine Adaptor Bracket	40097	1
Adaptor Bracket Screw	9416	4
End Cover Assy.	55140	1
End Cover Receptacle	53636	2
End Cover Receptacle (230V)	55253	1
Brush Rack Assy. (Complete)	55262	1
A. C. Brush	23607	6
A. C. Brush Holder	23500	6
D. C. Brush Holder		
& Plate Assy.	55107	1
A. C. Condenser	54977	1
A. C. Condenser	41221	1
Excitation Rectifier & Plate Assy.	55496	1
Base Assy.	24535	1

-3/B PN 58879
 Same But Has Recept.
 & Meter Box On Top of Unit.
 #
 SS 1189

SS # 1189

4KS4PC-3/B
 End Cover 56618
 w/V. Meter 52490

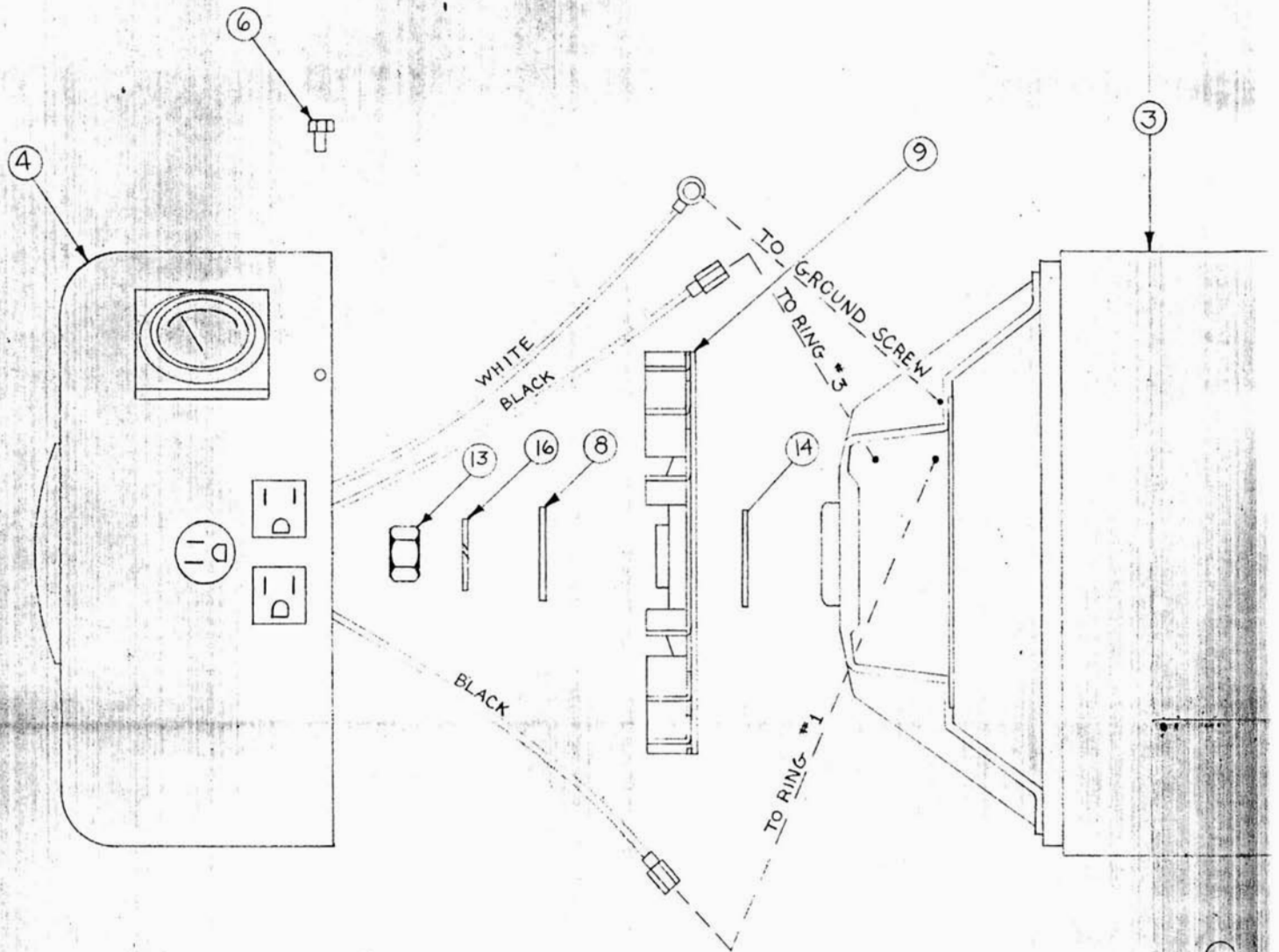
23585-0



Division of Dyna Technology, Inc.
 225 South Cordova St. / LE CENTER, MINNESOTA 56057
 Phone: (612) 357-6821

RPL#529

Feb. 78



TABLE

ITEM NO.	ITEM (2)	REF. MODEL
8880	B-55522	4KS4PC-3/B
8880-1	A-56719	302 KS4PC-53/B

7746	12	SCREW	#8-32x5/16
0039	1	LOCKWASHER	1/2 EXT. T.
80	4	LOCKWASHER	5/16 SPLIT
0552	1	LOCKWASHER	1/16 INT. T.
549	1	NUT	1/2-20
7416	4	SCREW	5/16-18x1 1/4
46024-3	2	SLEEVING	PER PRINT
41387-7	2	STRAP	" "
23404	1	FAN ASSY.	" "
21867	1	WASHER	" "
53643	2	TERMINAL	" "
53644	2	SCREW	" "
23607	6	BRUSH ASSY.	" "
56618	1	END COVER ASSY.	" "
55259	1	FIELD SHELL & COIL ASSY.	" "

BEARING

WINDING SPECIFICATION

S.S. 1189

Customer Dyna Technology Parts List _____
 Project No. _____ Frame No. 11040 Model No. 4KS4PC-3/A
 Reference SS 1174 Shell; 4-3/4" Dir. Rot. Face Comm. CW or CCW
 Spec. 4000 Watt 115/230 Volt 60 Hz 4 Pole 17.4 A 2 Brg Static Exc.

Armature No. B-55522 Lam. No. 21552-1 Varnish Spec. 82
 Lamination Spec. AS-152 Annealed No Skew No

Wdg.	Turns	Wire		Bars or Rings	Hipot 1 Sec.	Resistance		Weight Lbs.	Arm. Conn.
		Gage	Spec.			Max.	Min.		
1	21	2 #15	AS2F2	3	1500	.155x170 xxx202xxxxx184xxxx2x44xxxx	x152.138	2.03	183
2	21	2 #16	AS2F2			.211x223 xxx227xxxxx207xxxxx1x72xxxx	x200.188	1.68	
3									
4									

2 - 5 10T
 1 - 6 11T

Connect rectifier A-55143 to rings 1 & 2
 Test spec GTS-78

Commutator
 Solder: 50-50
 Temp. °F: x850 550

Field Coils
 Wdg. #1: C-55261 Lam. Spec. AS-154 Varnish Spec. 83
 Wdg. #2: _____ Field Lam. 23541 Annealed No

Wdg	Turns Coil	Wire		No. Coils	Hipot 1 Sec.	Resistance		Weight Lbs.	Exc. Volts	Exc. Amps
		Gage	Spec.			Max.	Min.			
1	800	#19	AS2F1	4	1500	34.2	30.8	15.9	121	3.4
2										
3										
4										

3	Armature resistance corrected	LR	11/8/77	LOR
2	Field was 550T #17 AS2G1; weights corrected	LRR	12/10/75	LOR
1	Original	DRM	10/23/70	LOR
ISSUE	REVISION	BY	DATE	AUTH.