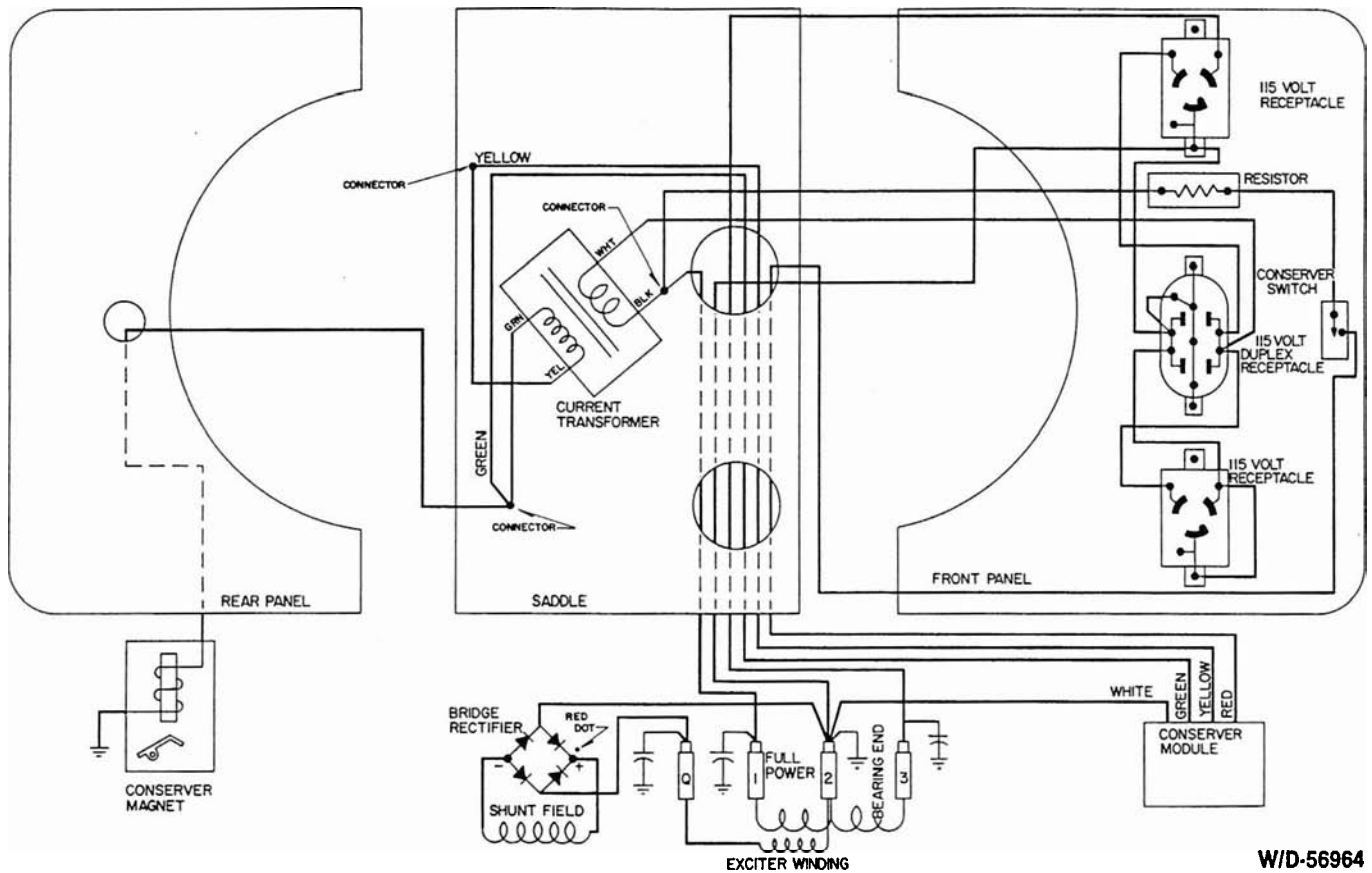


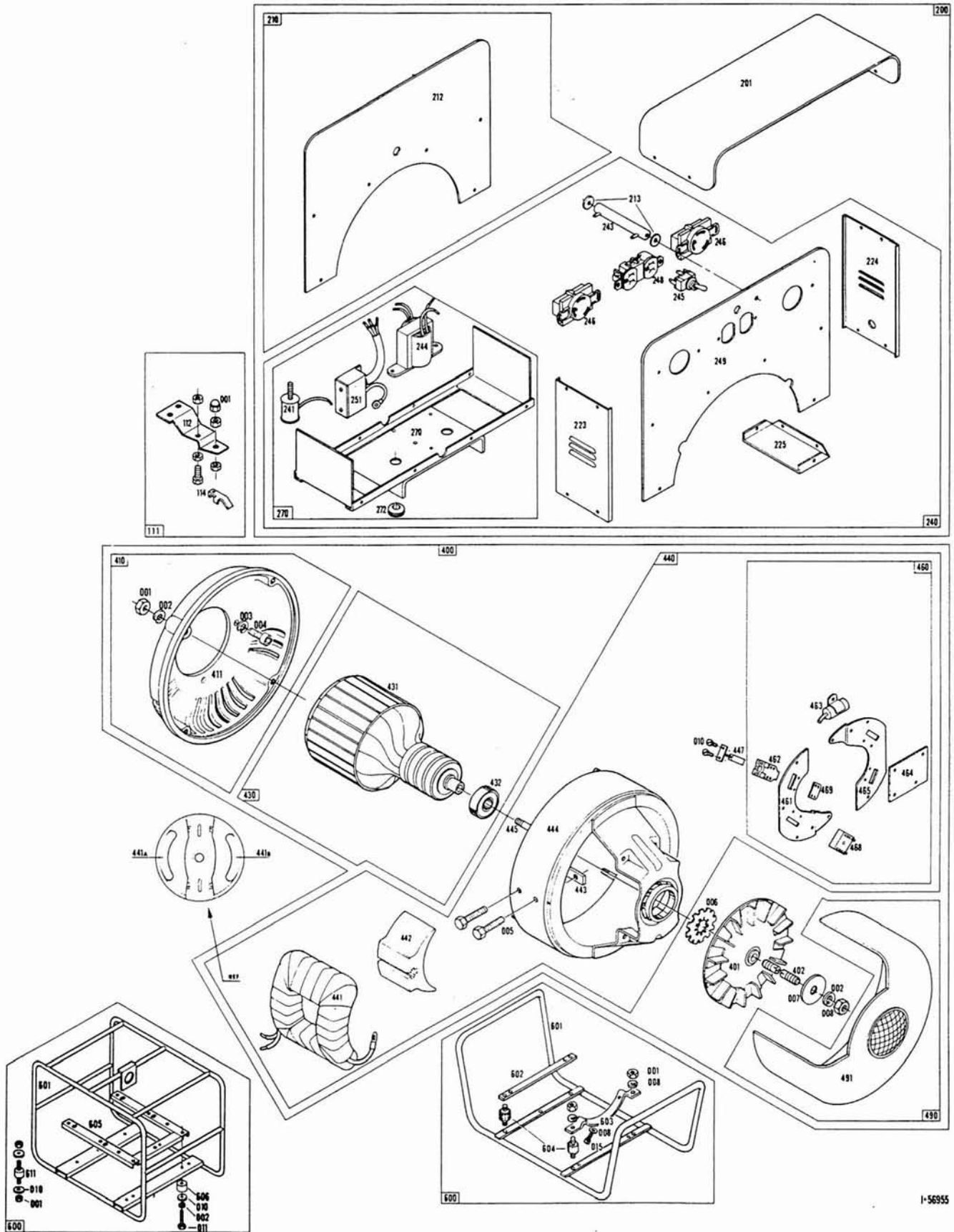
## ILLUSTRATED PARTS LIST



W/D-56964

## SCHEMATIC DIAGRAM

This IPL contains wiring, illustration, parts list, ordering information and technical data to perform routine maintenance on this generator. Consult factory with model no., serial no. and test data for further assistance.



REF.	PART NO.	QTY.	DESCRIPTION	REF.	PART NO.	QTY.	DESCRIPTION
001	458	14	Hex Nut— $\frac{5}{16}$ -18	401	55101	1	Fan Assembly
002	480	17	Lockwasher— $\frac{5}{16}$ Split	402	23197-2	1	Thru Bolt
003	481	4	Lockwasher— $\frac{3}{8}$ Split	411	54178	1	End Bracket
004	3290	4	Cap Screw— $\frac{3}{8}$ -16 X	430	56961	1	Armature & Brg Assembly
005	9416	4	Cap Screw— $\frac{5}{16}$ -18 X	431	56961-1	1	Armature Less Brg
006	55224	1	Lockwasher Int. Tooth	432	55223	1	Bearing
007	23558	1	Flat Washer	440	56957	1	Field Shell & Coil Assembly
008	23605	1	Hex Nut— $\frac{5}{16}$ -24	441A	56958	1	Field Coil
009	4637	4	Machine Screw—#10-24	441B	56958-1	1	Field Coil
010	40746	16	Machine Screw—#8-32 x $\frac{5}{16}$	442	24851	2	Pole Shoe
015	467	2	Cap Screw— $\frac{5}{16}$ -18	443	24849	2	Pole Shoe Retainer
100	58865	1	Drive Engine B&S 195432-0248-01	444	56917	1	Field Shell
112	44927	1	Formed Conserver Bracket	445	23451	4	Stud— $\frac{3}{16}$ -18
114	44892	1	Steel Extension	447	55536	9	Brush A.C.
200	56963	1	Control Box Assembly	461	56960	1	Plate—Brush Mounting
201	51580	1	Cover	462	59690	9	Brush Holder A.C.
212	51608	1	Rear Panel (Bare)	463	41221	3	Capacitor A.C.
213	1376	2	Shoulder Washer	464	49507	1	Bracket—Module Mtg.
223	51578	1	Side Panel	465	56960	1	Plate—Brush Mounting
224	51686	1	Side Panel	468	91452	1	Rectifier
225	51577	2	Bottom Box Support	469	23532	2	Spacer
241	44889	1	Electromagnet—Conserver	491	55007	1	End Cover
243	48583	1	Resistor—Conserver	601	59245	1	Cradle—Wrap Around
244	54196	1	Transformer—Conserver Sensing	601A	58368-1	Alt	Cradle—Open Loop Style
245	24238	1	Switch—Conserver	602	43292	1	Flat Bar—Engine Support
246	56279	1	Receptacle—125V/20A NEMA L5-20R	603	43291	1	Formed Bar—Generator Support
246A	56281	1	Receptacle—250V/20A NEMA L6-20R	604	23623	4	Shock Mount
248	24749	1	Receptacle—125V/15A NEMA 5-15R				
249	56324-1	1	Front Panel—Less Receptacles				
251	48574	1	Electronic Module—Conserver				
270	56926	1	Saddle				
272	56927	1	Grommet				

**PARTS ORDERING INFORMATION REQUIRED**

To fill your order for service parts, please advise the complete Generator model number and serial number, part number(s), and part description. If in doubt, consult the factory prior to placing the order. Send all parts orders to WINCO, Division of Dyna Technology, Inc., 225 South Cordova Ave., Le Center, MN 56057.



# TECHNICAL DATA

## GENERATOR SPECIFICATIONS:

Watts—3500; Volts—115/230; Amps—30/15; Phase—1; Hz—60; RPM—3600

Normal Voltage:	No Load:	Full Load:
115 VAC	132 VAC	112 VAC
230 VAC	264 VAC	224 VAC

## Resistance:

SS#1257

Field Coils— $32.5 \pm 1.5$  ohms

Armature—Less than one ohm ring to ring

## Excitation Voltage: (Approximately)

93 Volts DC

## Separately Excited:

12 VDC to Positive Field Lead (Disconnected From Rectifier). 130 to 160 VAC output.

## BASIC TEST PROCEDURE:

Refer to illustration for component location by Reference Number.

*Example:* No output—Check field coils for opens or shorts, Reference Numbers 441A and 441B.

## No Output:

- Check for loose or open connections.
- Check rectifier, Reference Number 468.
- Check field coils for opens or shorts, Reference Numbers 441A and 441B.
- Check brushes for wear, proper seating and not stuck in holder, Reference Number 447.
- Check armature for opens or shorts, Reference Number 431.

## Low Voltage—No Load:

- Check generator speed/frequency (3600 RPM nominal).
- Check generator load.
- Check for loose or open connections.
- Check winding resistance, Reference Numbers 441A, 441B and 431.

## Low Voltage—Full Load:

- Check generator speed/frequency (3600 RPM nominal).
- Check for loose or open connections.
- Check winding resistance, Reference Numbers 441A, 441B and 431.

**WINCO**<sup>®</sup>  
Division of DYNA TECHNOLOGY, INC.

7850 Metro Parkway  
Minneapolis, MN 55420-1985  
Phone (612) 853-8400  
Telex 290753  
DYNA TECH MPS