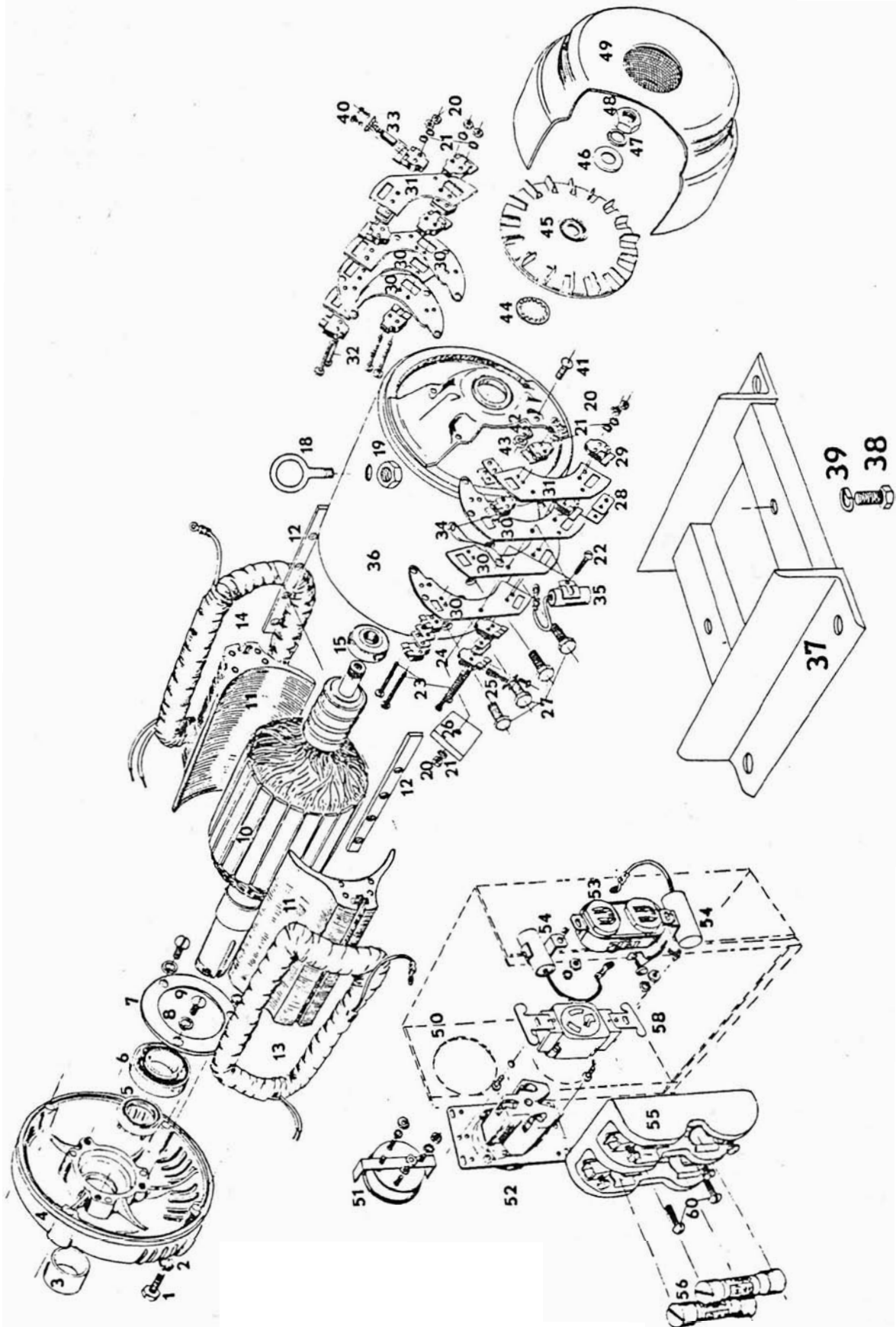


# WINCO GENERATOR PLANT MODEL 20PTOF-3/C

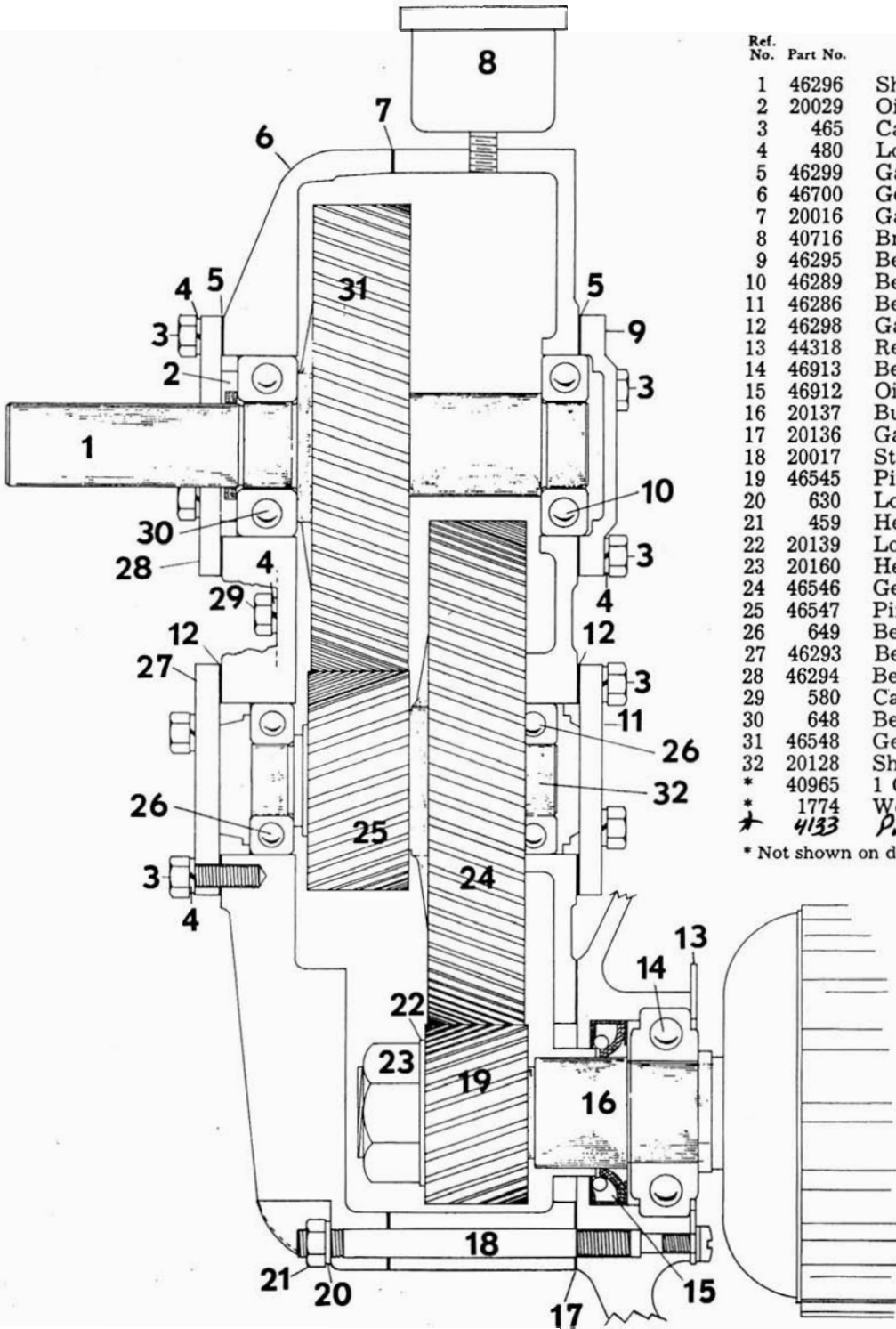


Manufactured by

## WINCO

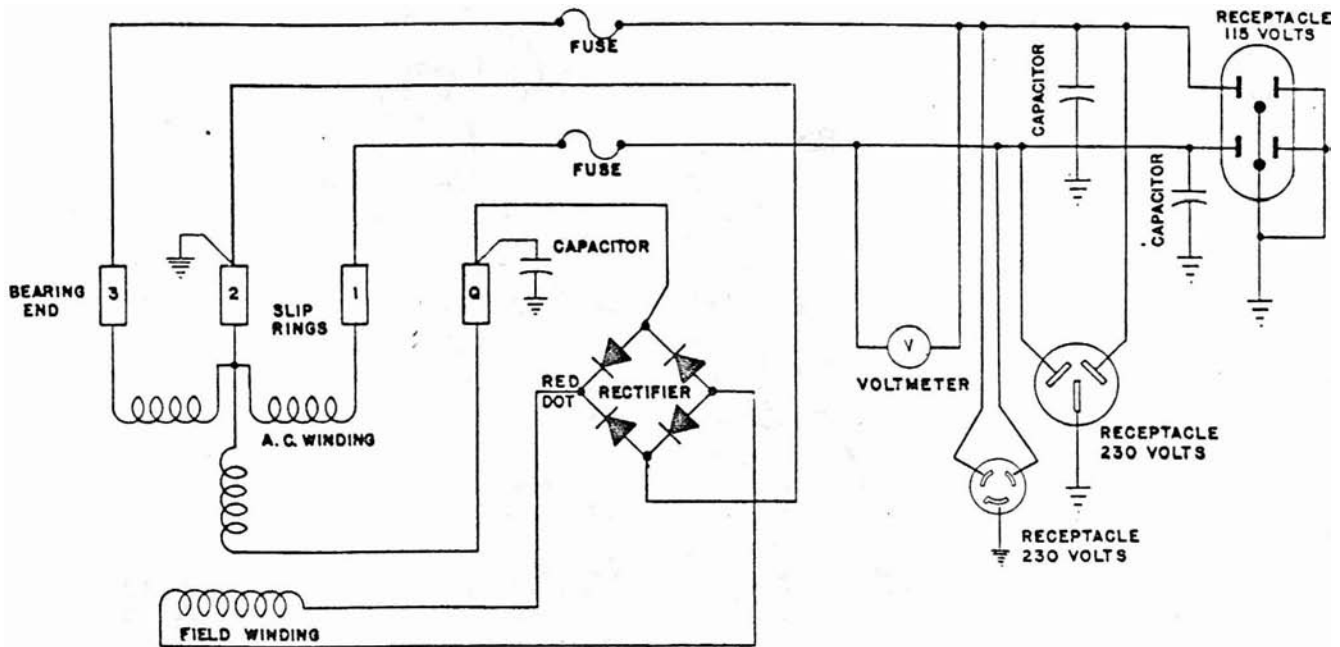
Division of Dyna Technology, Inc.  
225 South Cordova St. / LE CENTER, MINNESOTA 56057  
Phone: (612) 267-8871

## GEAR CASE FOR TRACTOR DRIVEN PTO GENERATORS MODELS ENDING IN /B AND /C



Ref. No.	Part No.	DESCRIPTION	Quantity
1	46296	Shaft	1
2	20029	Oil Seal	1
3	465	Cap Screw 5/16 - 18 x 7/8	12
4	480	Lockwasher 5/16"	24
5	46299	Gasket	2
6	46700	Gear Case & Cover	1
7	20016	Gasket	1
8	40716	Breather	1
9	46295	Bearing Retainer	1
10	46289	Bearing	1
11	46286	Bearing Retainer	1
12	46298	Gasket	2
13	44318	Retainer Plate	1
14	46913	Bearing	1
15	46912	Oil Seal	1
16	20137	Bushing	1
17	20136	Gasket	1
18	20017	Stud	3
19	46545	Pinion	1
20	630	Lockwasher	3
21	459	Hex Nut 3/8"	3
22	20139	Lockwasher	1
23	20160	Hex Jam Nut	1
24	46546	Gear	1
25	46547	Pinion	1
26	649	Bearing	2
27	46293	Bearing Retainer	1
28	46294	Bearing Retainer	1
29	580	Cap Screw 5/16 - 18 x 1 1/4	12
30	648	Bearing	1
31	46548	Gear	1
32	20128	Shaft	1
*	40965	1 Qt. Gear Oil	1
*	1774	Woodruff Key #15 (1/4 x 1")	4
†	4133	Pin	

\* Not shown on drawing.



plug- 91357-000

### PARTS LIST

Ref. No.	Part No.	Description	Qty.	Ref. No.	Part No.	Description	Qty.
1	51101	Field Sh. cap screw	4	31	52559	Brush holder spacer	2
2	480	Field Shell lockwasher	4	32	44342	Machine screw	4
3	20137	Sleeve	1	33	24981	A.C. Brush	12
4	54804	End Bracket	1	34	41387-6	Ground strap	1
5	46912	Oil Seal	1	35	41221	Condenser	1
6	46913	Bearing	1	36	54734	Field shell & Bracket	1
7	44318	Bearing Retain. Plate	1	37	54754	Base assembly	1
8	479	Bear. Ret. L-washer	3	38	48178	Hex head screw	2
9	45633	Bear. Ret. Screw	3	39	636	Lockwasher (split type)	2
10	52497-1	Armature	1	40	40746	Brush holder screw	28
11	43473	Pole shoe assembly	2	41	4637	Machine screw	4
12	43474	Pole shoe retainer	2	42	484	Lockwasher	4
13	52563	Field coil assembly	1	43	456	Hex Nut	4
14	52563-1	Field coil assembly	1	44	40552	Lockwasher (fan)	1
15	50215	Bearing	1	45	23404	Fan assembly	1
18	54790	Eye bolt	1	46	21867	Flat washer (fan)	1
19	1744	Nut	3	47	20039	L-washer (fan) split type	1
20	5113	Hex nut	9	48	9549	Hex nut (fan)	1
21	6376	Lockwasher (split type)	9	49	23634	End Cover	1
22	23599	Machine screw	1	50	54756	Control box (only)	1
23	21977	Machine screw	4	51	52490	Voltmeter	1
24	23500	Brush holders	2	52	57325	Receptacle	1
25	53949	Q ring brush	2	53	24749	Duplex receptacle	1
26	53976	Rectifier	1	54	41221	Condensers	2
27	53806	Cap screw	8	55	54773	Fuse base	1
28	23532	Fiber spacers	14	56	57410	Fuse	2
29	23500-2	A.C. brush holders	12	57	43743	Ground Lug	1
30	53975	Brush holder mtg. plate	6	58	55278	Receptacle	1
					54661	540 rpm Gear case	1

Any parts required for gas engine portion of the unit should be obtained from the local engine manufacturer's service station.